

2015 E. WEST MAPLE ROAD
COMMERCE TWP., MICHIGAN



**SIGNATURE
ASSOCIATES**
KNOW SIGNATURE | KNOW RESULTS

LAND FOR SALE
2.23 Acres Available

PRIME FRONTAGE



PROPERTY FEATURES

- 2.23 acres available
- Prime frontage on the north side of E. West Maple Road, just west of Welch Road and M-5
- Currently being used for a landscaping operation
- Zoned IV
- All utilities at site
- Sale price: Contact Broker



For more information, please contact:

JEFF LEMANSKI

(248) 359 0641

jlemanski@signatureassociates.com

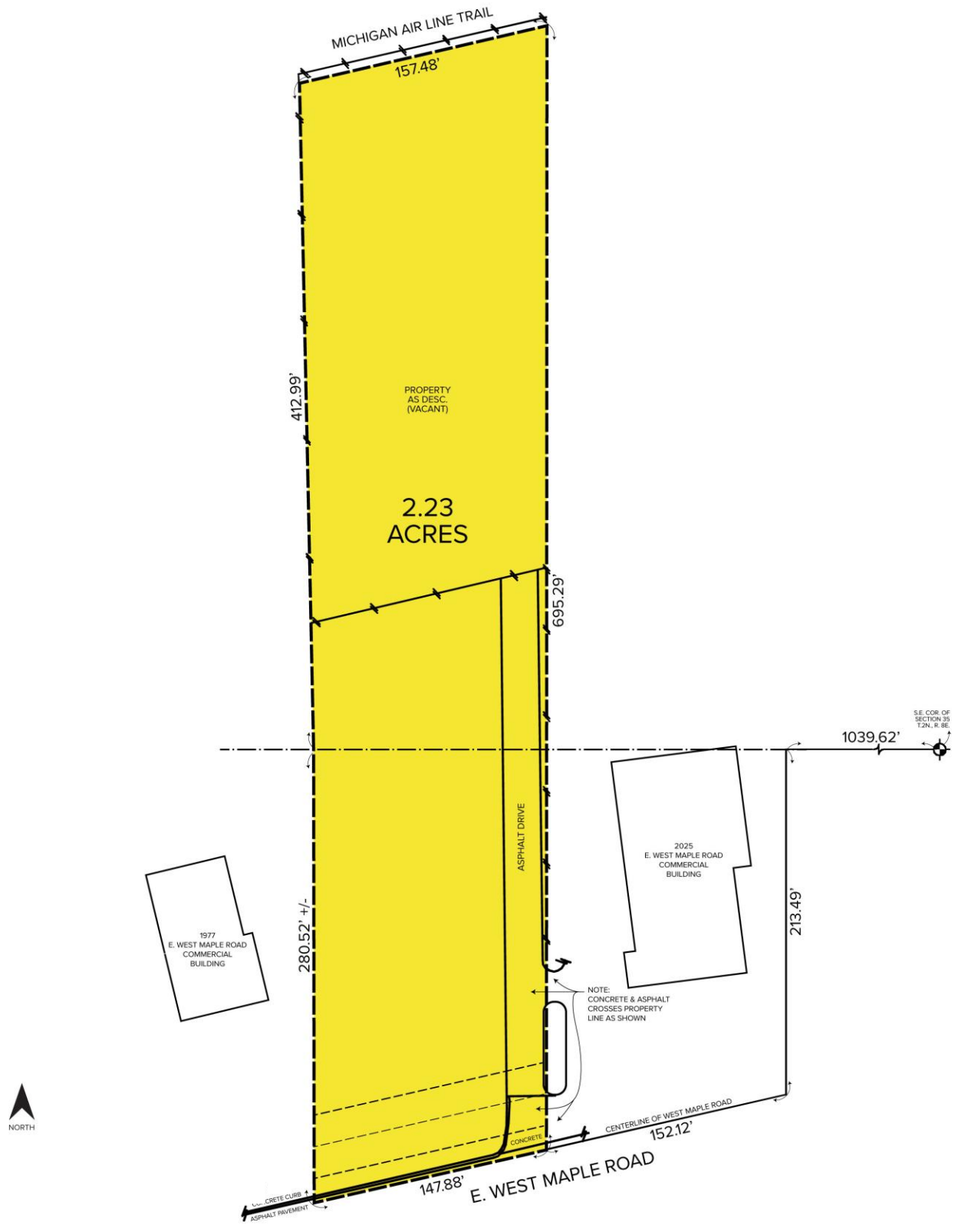
SIGNATURE ASSOCIATES
One Towne Square, Suite 1200
Southfield, MI 48076
www.signatureassociates.com

2015 E. West Maple Road – Commerce Twp., Michigan

Land For Sale

2.23
Acres
AVAILABLE

Site Plan



For more information, please contact:
JEFF LEMANSKI
(248) 359 0641
jlemanski@signatureassociates.com

SIGNATURE ASSOCIATES
One Towne Square, Suite 1200
Southfield, MI 48076
www.signatureassociates.com

Information is subject to verification and no liability for errors or omissions is assumed. Price is subject to change and listing withdrawal.