



FOR LEASE
**SAN JOSE
CENTER**

3926-8859 SAN JOSE PARK DRIVE
JACKSONVILLE, FLORIDA 32217

RETAIL / OFFICE / MEDICAL



FOR LEASE
SAN JOSE CENTER

3926-8859 SAN JOSE PARK DRIVE • JACKSONVILLE, FLORIDA 32217

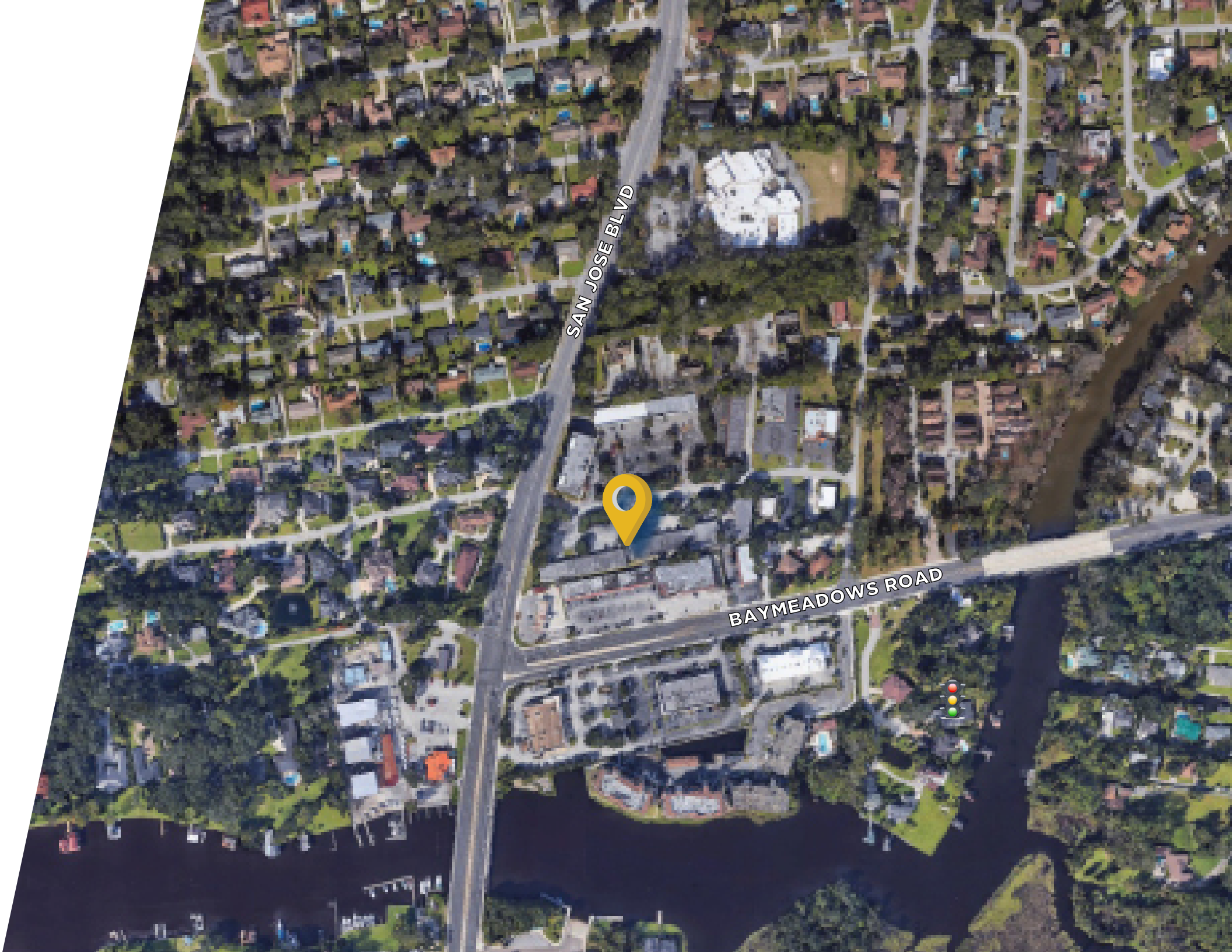


BUILDING AMENITIES

- Excellent visibility on San Jose Boulevard
- Ample parking for staff, clients and customers
- Multiple ingress/egress points
- Features walk up doors with individual access and exterior suite signage

PROPERTY HIGHLIGHTS

- Prime Commercial area between Mandarin and San Marco
- Pylon signage available
- Property management staff on site





UHealth

Jeff Jacqmein, MD

3872

INFINITY

WALKS



151

SAN JOSE CENTER

BUILDING FEATURES

TOTAL SQ. FT. ±25,470 SF

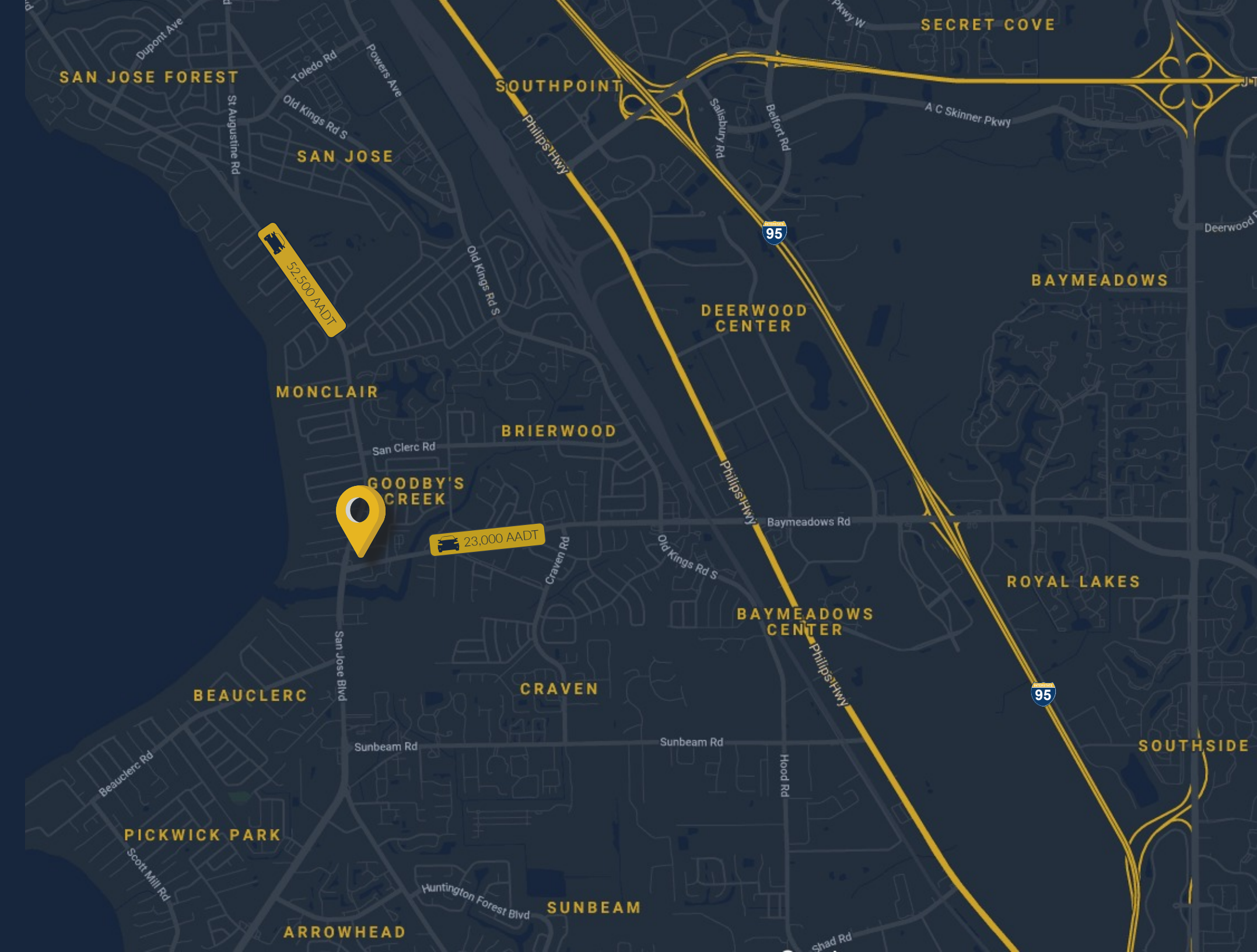
TOTAL AVAILABLE ±2,050 SF

LEASE RATE Negotiable

ZONING CN / CRO

DEMOGRAPHICS

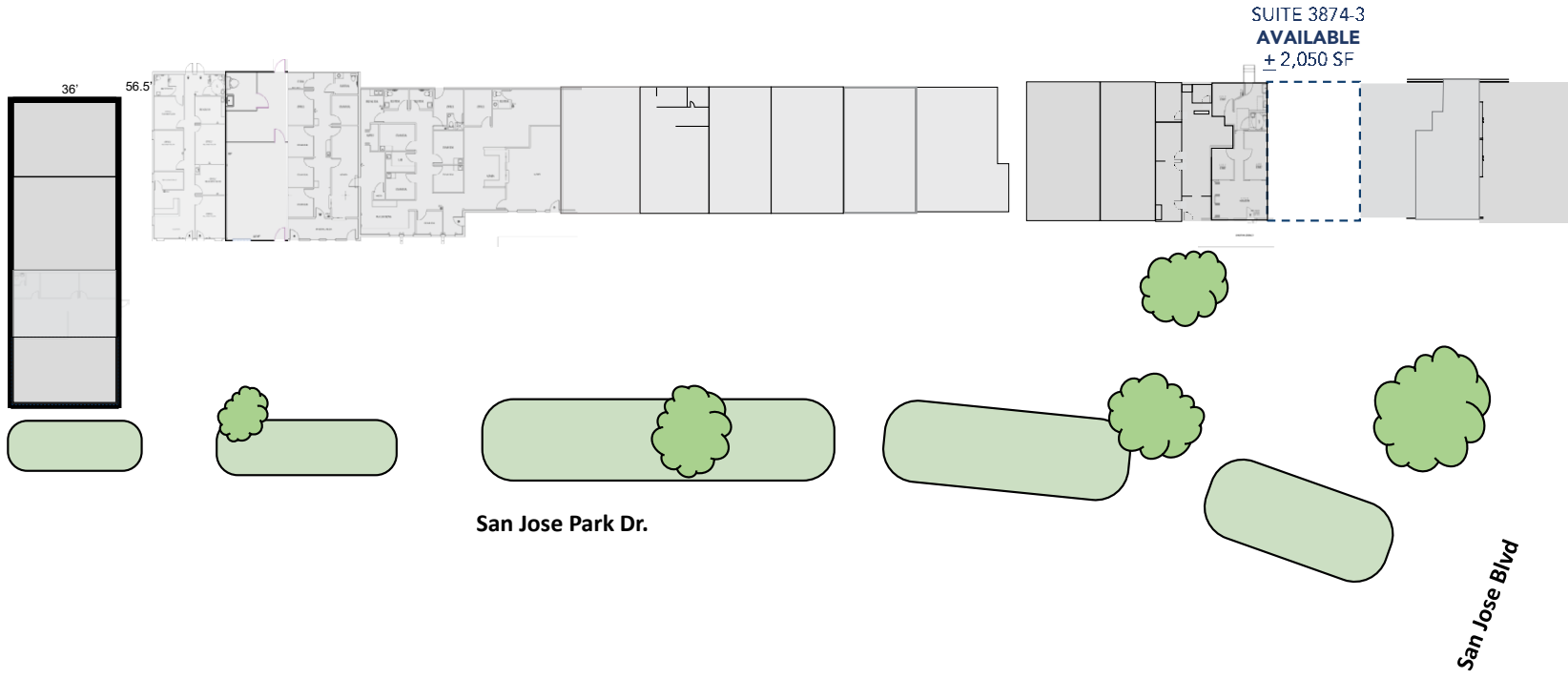
	1 MILE	3 MILES	5 MILES
POPULATION	11,680	61,679	158,597
HOUSEHOLDS	5,169	27,387	67,297
MEDIAN HH INCOME	\$52,676	\$51,896	\$56,776
AVERAGE HH INCOME	\$69,701	\$72,114	\$77,397



FOR LEASE

SAN JOSE CENTER

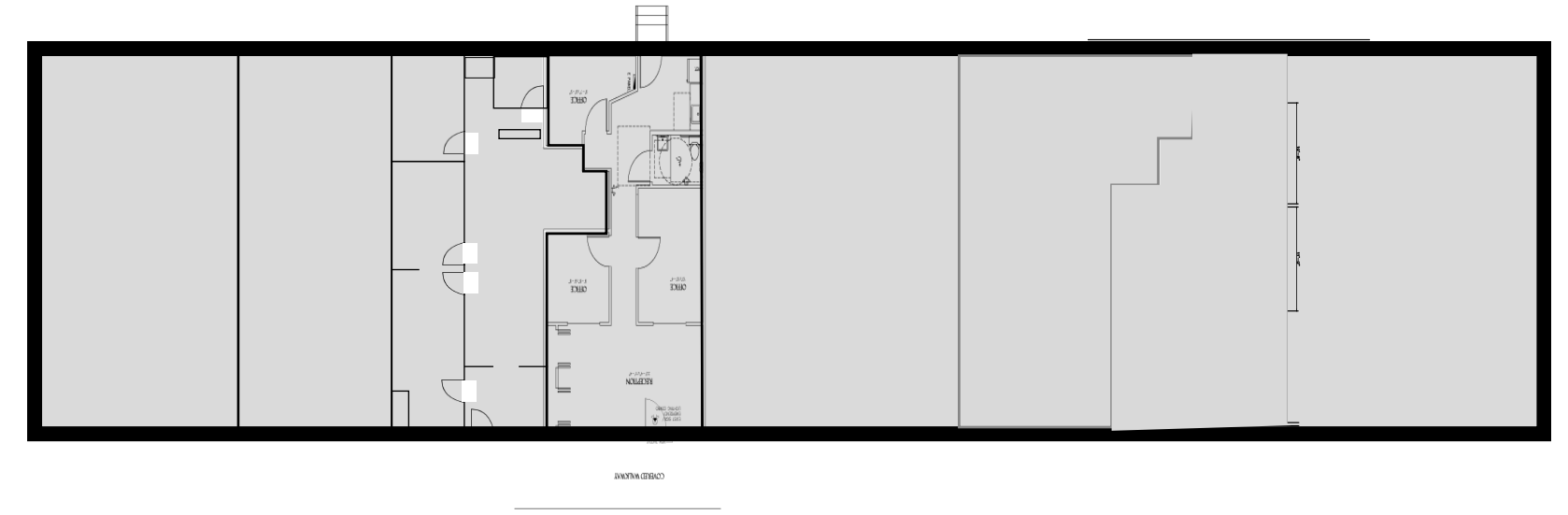
3926-3850 SAN JOSE PARK DRIVE • JACKSONVILLE, FLORIDA 32217



FOR LEASE

SAN JOSE CENTER

8841-8859 SAN JOSE PARK DRIVE • JACKSONVILLE, FLORIDA 32217





John Hodges, Director of Real Estate Services

leasing@imc-jax.com

7915 Baymeadows Way
Suite 400
Jacksonville, FL 32256

T: 904.737.8846 x114

www.imc-jax.com

The information provided on this brochure is for general informational purposes only. Although all information furnished regarding property for sale, rental, or financing is diligently checked for reliability, International Management Company, LLC ("IMC") makes no express representation nor is any to be implied as to the accuracy thereof and may be subject to errors, omissions, change of price, rental or other conditions, prior sale, lease or financing, or withdrawal without notice. No guarantees are made about the accuracy or completeness of the content.

