

11290 Trade Center Drive, Suite B

Rancho Cordova, CA 95742



Contact Us

Tyler Howell

Senior Associate

T: 916 781 4835

tyler.howell1@cbre.com

Lic. 02100245

Flex Unit

11290 Trade Center Drive | Rancho Cordova, CA 95742

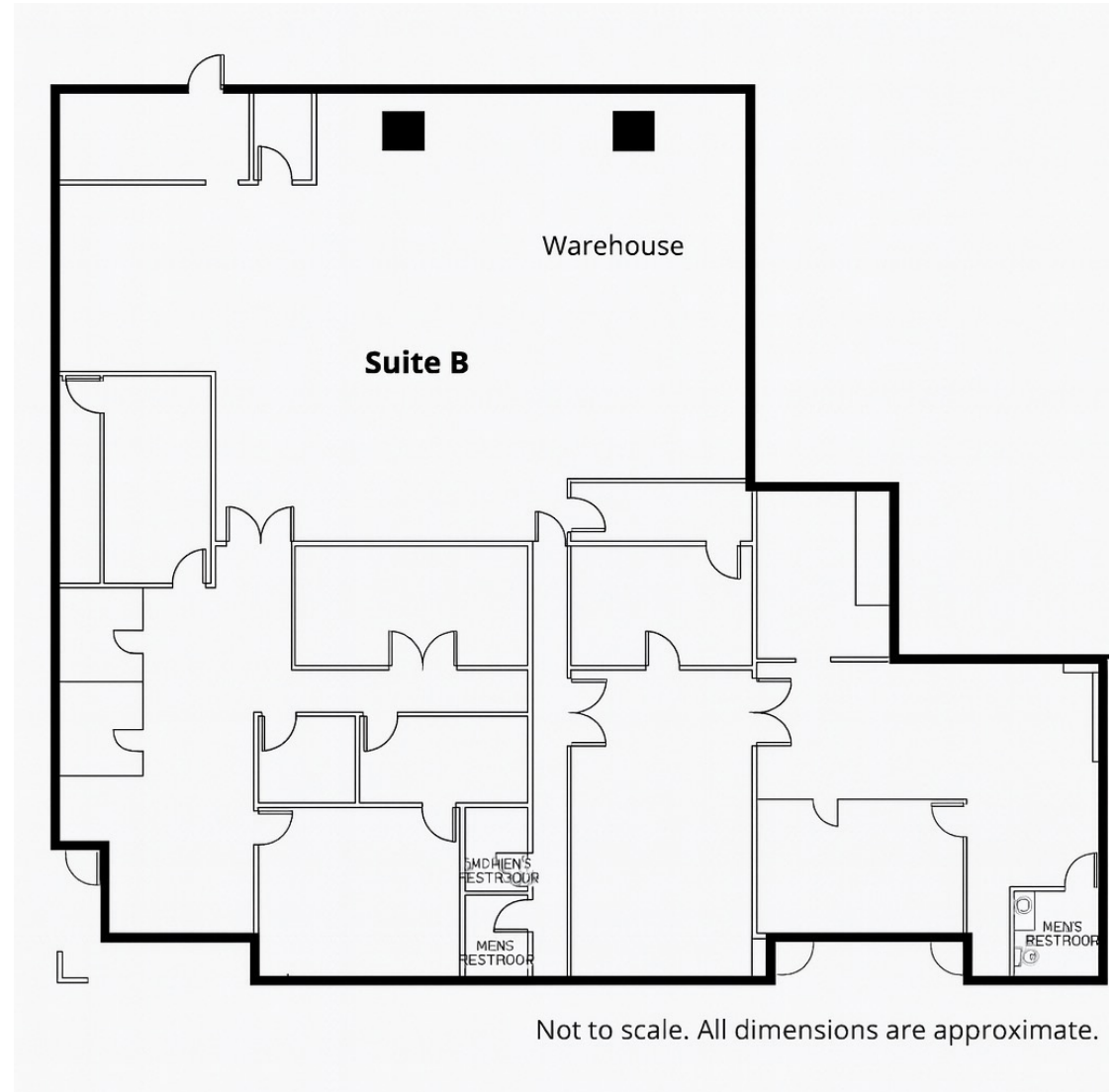
For Sublease

Property Information

\$0.82 PSF/Month, NNN

- Term through October 31, 2027
- Total Area: ±5,800 Square Feet
 - Warehouse Area: ±2,300 Square Feet (Potential to Expand)
 - Office Area: ±3,500 Square Feet
- 15' - 16' Clear Height
- Insulated Warehouse
- Sprinklered
- Street Frontage
- 200 Amp Electrical Service *
- Two (2) Grade Level Doors
- Convenient Access to Hwy 50
- Close Proximity to Retail Amenities
- Zoning: M1 (City of Rancho Cordova) *

* to be verified by tenant

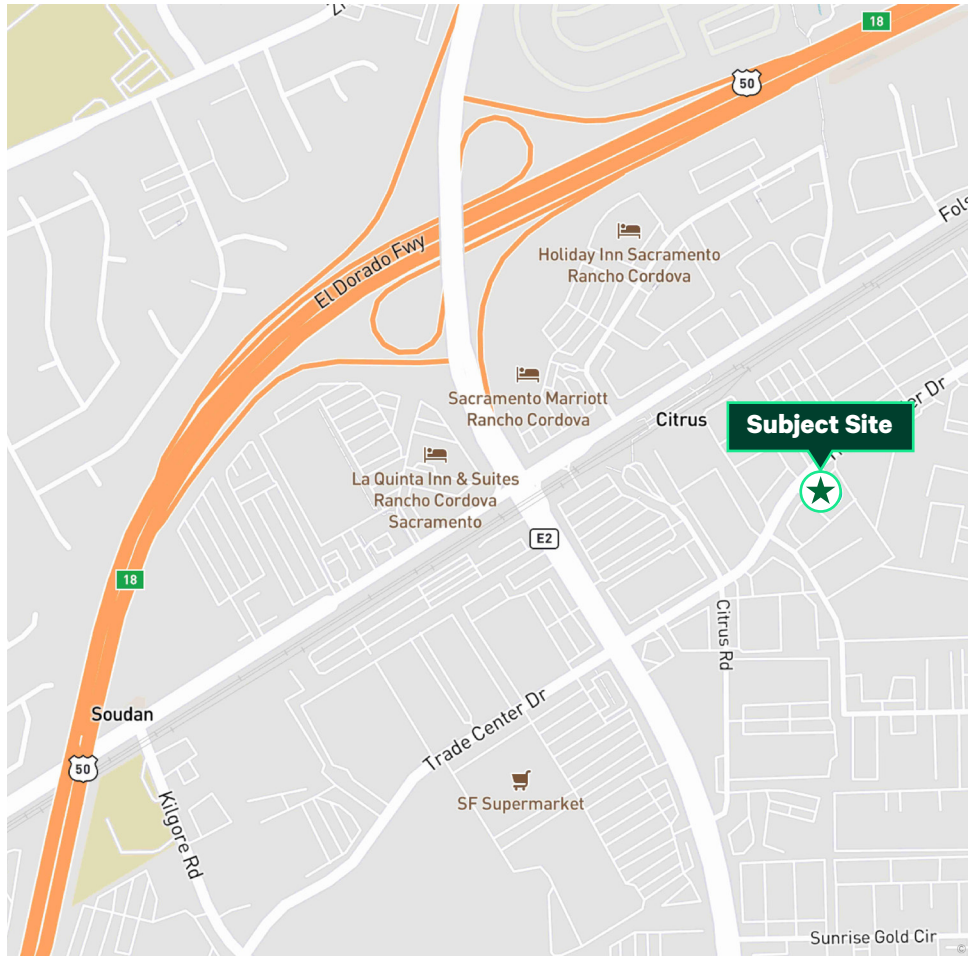


Flex Unit

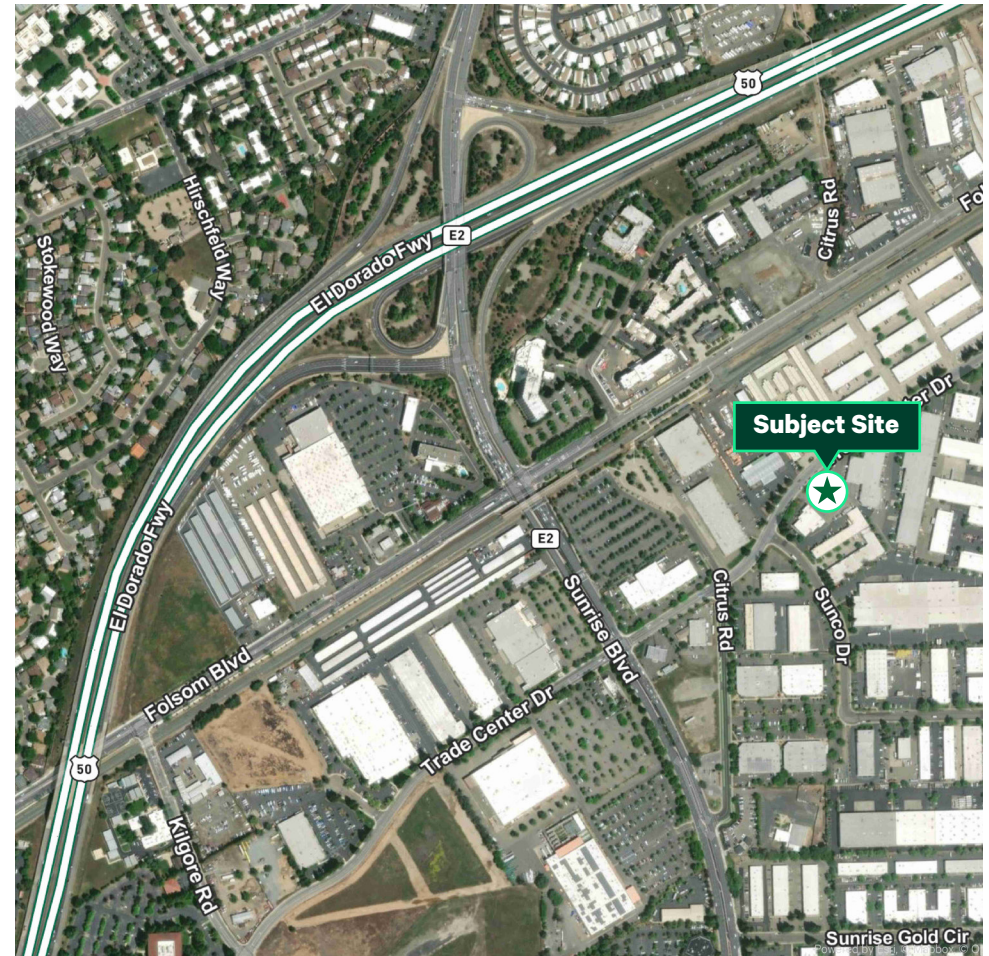
11290 Trade Center Drive | Rancho Cordova, CA 95742

For Sublease

Area Map



Aerial Map



MAPS NOT TO SCALE

© 2025 CBRE, Inc. All rights reserved. This information has been obtained from sources believed reliable but has not been verified for accuracy or completeness. CBRE, Inc. makes no guarantee, representation or warranty and accepts no responsibility or liability as to the accuracy, completeness, or reliability of the information contained herein. You should conduct a careful, independent investigation of the property and verify all information. Any reliance on this information is solely at your own risk. CBRE and the CBRE logo are service marks of CBRE, Inc. All other marks displayed on this document are the property of their respective owners, and the use of such logos does not imply any affiliation with or endorsement of CBRE. Photos herein are the property of their respective owners. Use of these images without the express written consent of the owner is prohibited.