



205 Perimeter Park Drive Ste's DE

205 Perimeter Park Drive
Knoxville, Tennessee 37922

Property Highlights

- I-40 access 1/2 of a mile away
- Roll up drive-in bay door
- Affordable rents
- West Knoxville demographics

Property Overview

Centrally located flex space with quick access to I-40/75 and Pellissippi Parkway. The property offers two grade level roll-up doors into smaller warehouse space warehouse. Good parking and affordable rents further highlight this opportunity.

I-40 interstate access 1/2 of a mile. Immediate access to West Knoxville demographics for vendor uses.

NNN's: \$1.89 PSF/\$472.50 monthly

Offering Summary

Lease Rate:	\$14 SF/yr (NN)
Building Size:	8,615 SF
Available SF:	3,000 SF
Lot Size:	6.2 Acres

Demographics

	0.25 Miles	0.5 Miles	1 Mile
Total Households	91	345	1,288
Total Population	245	932	3,451
Average HH Income	\$144,728	\$138,820	\$133,083

For More Information

Michael Moore

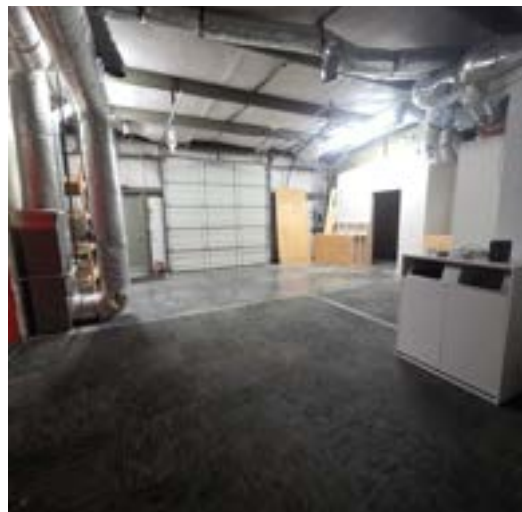
O: 865 531 6400
mmoore@koellamoore.com | TN #324982

Jessica Gupton

O: 865 640 6140
jgupton@koellamoore.com | TN #383050

BROCHURE

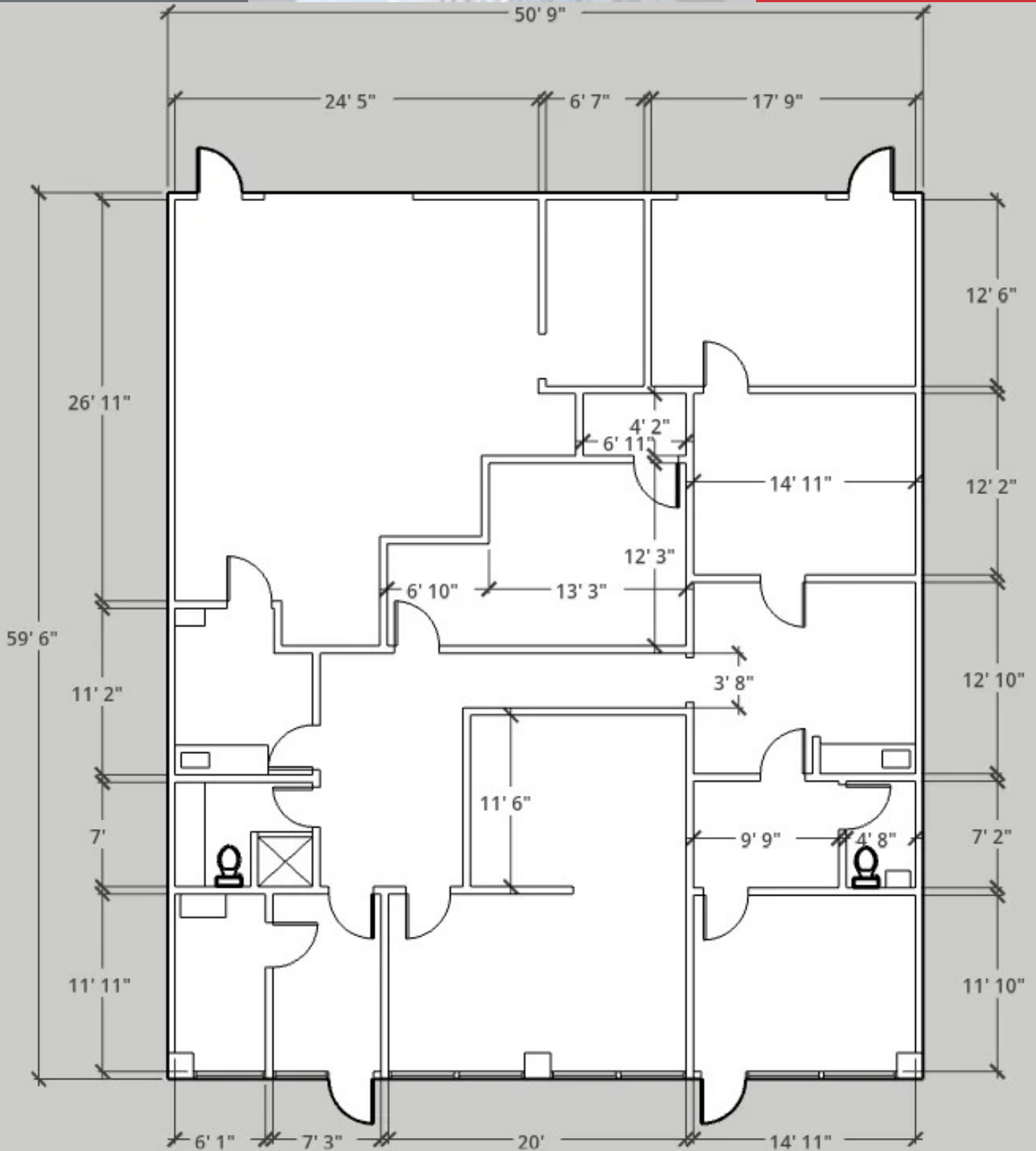
205 Perimeter Park Drive, Knoxville, TN 37922



BROCHURE

205 Perimeter Park Drive, Knoxville, TN 37922

NO WARRANTY OR REPRESENTATION, EXPRESS OR IMPLIED, IS MADE AS TO THE ACCURACY OF THE INFORMATION CONTAINED HEREIN, AND THE SAME IS SUBMITTED SUBJECT TO ERRORS, OMISSIONS, CHANGE OF PRICE, RENTAL OR OTHER CONDITIONS, PRIOR SALE, LEASE OR FINANCING, WITHDRAWAL WITHOUT NOTICE, OR ANY SPECIAL LISTING CONDITIONS IMPOSED BY OUR PRINCIPALS. NO WARRANTIES OR REPRESENTATIONS ARE MADE AS TO THE CONDITION OF THE PROPERTY OR ANY HAZARDS CONTAINED THEREIN. UNLESS THERE IS AN AGREEMENT STIPULATING OTHERWISE, THE AFFILIATE BROKERS OR BROKERS NAMED WITHIN REPRESENT THE OWNER OR LANDLORD.



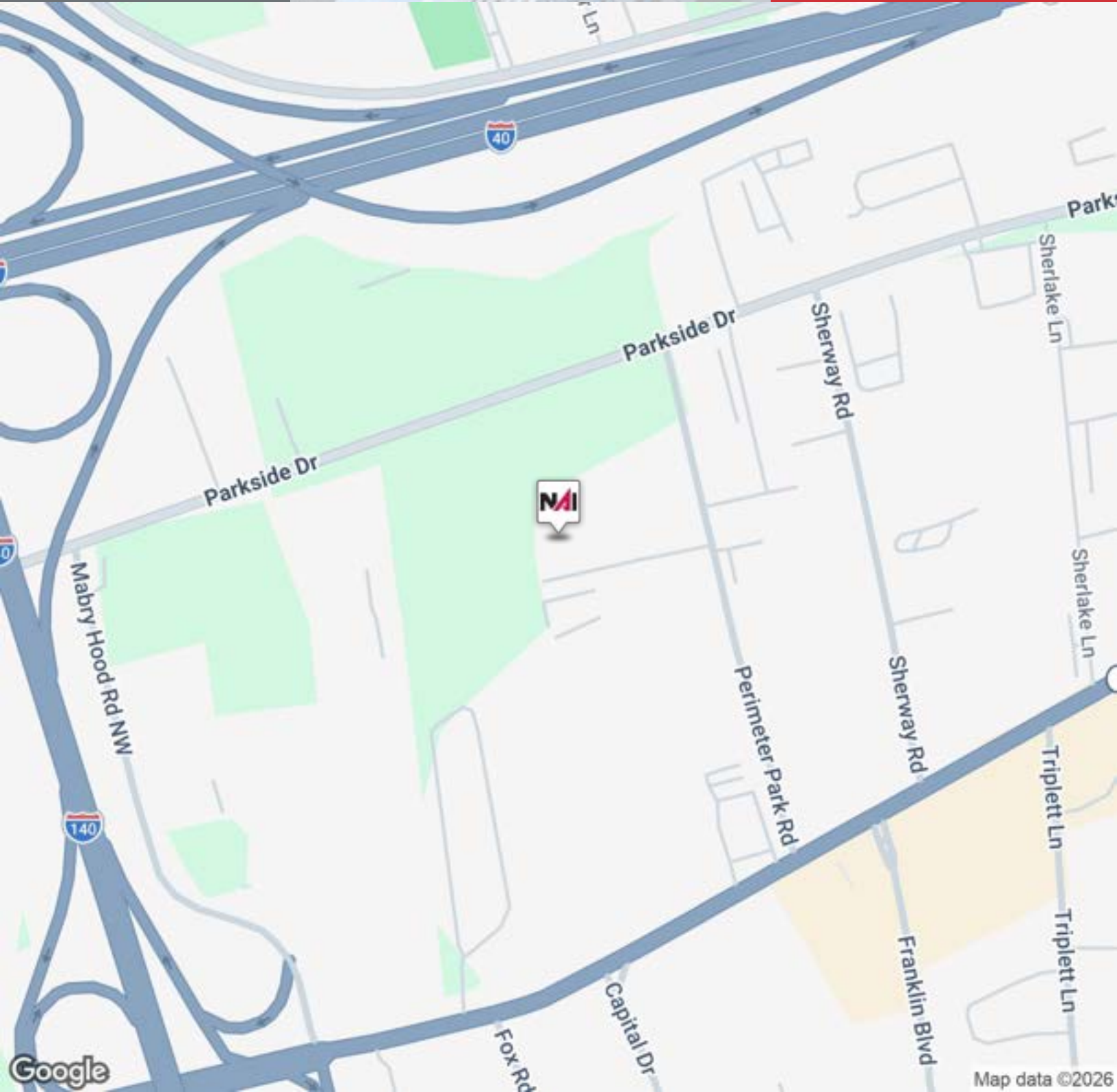
BROCHURE

205 Perimeter Park Drive, Knoxville, TN 37922

NO WARRANTY OR REPRESENTATION, EXPRESS OR IMPLIED, IS MADE AS TO THE ACCURACY OF THE INFORMATION CONTAINED HEREIN, AND THE SAME IS SUBMITTED SUBJECT TO ERRORS, OMISSIONS, CHANGE OF PRICE, RENTAL OR OTHER CONDITIONS, PRIOR SALE, LEASE OR FINANCING, WITHDRAWAL WITHOUT NOTICE, OR ANY SPECIAL LISTING CONDITIONS IMPOSED BY OUR PRINCIPALS. NO WARRANTIES OR REPRESENTATIONS ARE MADE AS TO THE CONDITION OF THE PROPERTY OR ANY HAZARDS CONTAINED THEREIN. UNLESS THERE IS AN AGREEMENT STIPULATING OTHERWISE, THE AFFILIATE BROKERS OR BROKERS NAMED WITHIN REPRESENT THE OWNER OR LANDLORD.

For Lease

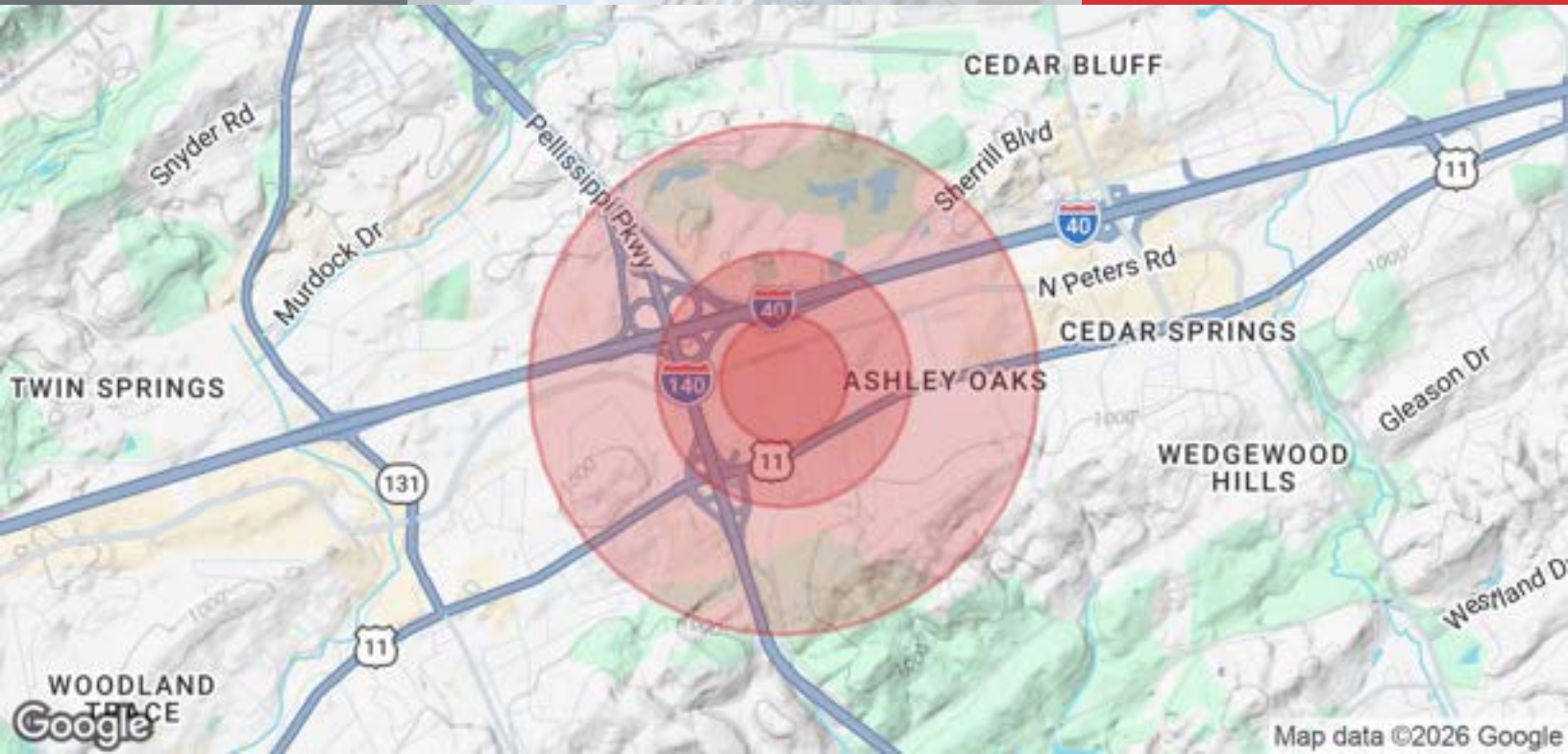
3,000 SF | \$14 SF/yr
Office Space



BROCHURE

205 Perimeter Park Drive, Knoxville, TN 37922

NO WARRANTY OR REPRESENTATION, EXPRESS OR IMPLIED, IS MADE AS TO THE ACCURACY OF THE INFORMATION CONTAINED HEREIN, AND THE SAME IS SUBMITTED SUBJECT TO ERRORS, OMISSIONS, CHANGE OF PRICE, RENTAL OR OTHER CONDITIONS, PRIOR SALE, LEASE OR FINANCING, WITHDRAWAL WITHOUT NOTICE, OR ANY SPECIAL LISTING CONDITIONS IMPOSED BY OUR PRINCIPALS. NO WARRANTIES OR REPRESENTATIONS ARE MADE AS TO THE CONDITION OF THE PROPERTY OR ANY HAZARDS CONTAINED THEREIN. UNLESS THERE IS AN AGREEMENT STIPULATING OTHERWISE, THE AFFILIATE BROKERS OR BROKERS NAMED WITHIN REPRESENT THE OWNER OR LANDLORD.



Population

0.25 Miles

0.5 Miles

1 Mile

Total Population

245

932

3,451

Average Age

38.8

40.1

41.7

Average Age (Male)

37.8

39.0

40.1

Average Age (Female)

39.5

41.5

43.7

Households & Income

0.25 Miles

0.5 Miles

1 Mile

Total Households

91

345

1,288

of Persons per HH

2.7

2.7

2.7

Average HH Income

\$144,728

\$138,820

\$133,083

Average House Value

\$419,711

\$403,825

\$391,200

2023 American Community Survey (ACS)

BROCHURE

205 Perimeter Park Drive, Knoxville, TN 37922

NO WARRANTY OR REPRESENTATION, EXPRESS OR IMPLIED, IS MADE AS TO THE ACCURACY OF THE INFORMATION CONTAINED HEREIN, AND THE SAME IS SUBMITTED SUBJECT TO ERRORS, OMISSIONS, CHANGE OF PRICE, RENTAL OR OTHER CONDITIONS, PRIOR SALE, LEASE OR FINANCING, WITHDRAWAL WITHOUT NOTICE, OR ANY SPECIAL LISTING CONDITIONS IMPOSED BY OUR PRINCIPALS. NO WARRANTIES OR REPRESENTATIONS ARE MADE AS TO THE CONDITION OF THE PROPERTY OR ANY HAZARDS CONTAINED THEREIN. UNLESS THERE IS AN AGREEMENT STIPULATING OTHERWISE, THE AFFILIATE BROKERS OR BROKERS NAMED WITHIN REPRESENT THE OWNER OR LANDLORD.