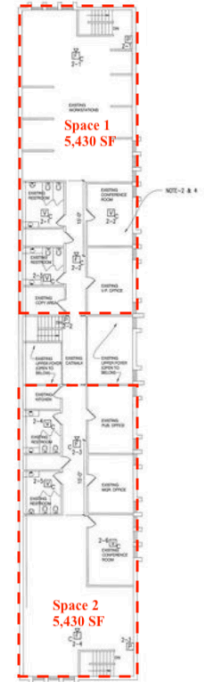
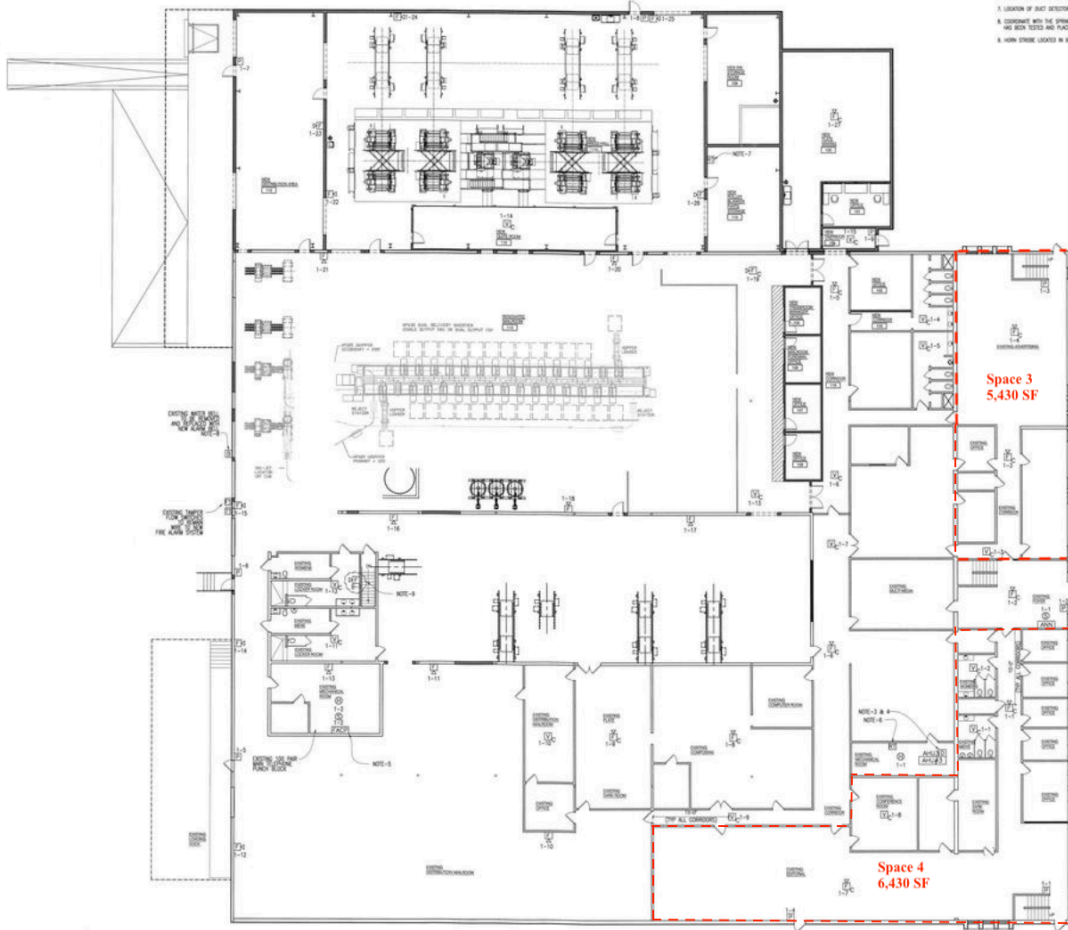


DRAWING NOTES:

1. SEE DRAWING CLEAR FOR FIRE ALARM PULL STATION LOCATIONS AND GENERAL NOTES.
2. SEE DRAWING CLEAR FOR SMOKE DETECTORS TO BE ADDED TO THE EXISTING OFFICE AREA REWORK PANEL UNITS AC-1 THRU AC-4, RFD-4, AND RFD-7 AND FOR SMOKE DETECTORS IN THE NEW REWORK PANEL UNITS. ALL SMOKE DETECTOR SHALL BE INSTALLED IN THE SUPPLY AIR DUCTS.
3. FURNISH AND INSTALL AIR SMOKE DETECTOR IN EXISTING AIR HANDLING UNIT PANELS.
4. VERIFY LOCATION OF ALL SMOKE DETECTOR WITH THE MECHANICAL CONTRACTOR.
5. INSTALL NEW FIRE ALARM PANEL IN THE SAME LOCATION AS EXISTING OUT OF SERVICE PANEL. HOUSE EXISTING 120 VOLT CIRCUIT FROM PANEL WP-2 BRANCH #2.
6. MOUNT REMOTE TEST SWITCHES FOR EXISTING UNITS PANELS RFD-4, RFD-5, AC-1, AC-2, AC-3 AND AC-4. VERIFY EXACT LOCATION IN ROOM WITH OWNER.
7. LOCATION OF SMOKE DETECTOR REMOTE TEST SWITCHES FOR NEW REWORK PANELS RFD-1 THRU RFD-3. VERIFY EXACT LOCATION WITH THE OWNER.
8. COORDINATE WITH THE STRUCTURAL CONTRACTOR FOR SHARING OF EXISTING WATER FLOW ACTIVATED BELL BELL WIRE ROUNDS IN SERVICE UNITS. NEW FIRE ALARM PULL STATION AND BELL TESTERS AND PULSES IN SERVICE MUST NEW ALARM BELL. ADAPTED TO EXISTING BELL.
9. HOUSE EXISTING LOCATED IN REWORK STORE ROOM.



FIRE ALARM PLAN - FIRST FLOOR
SCALE 1/8" = 1'-0"



FIRE ALARM PLAN - SECOND FLOOR
SCALE 1/8" = 1'-0"

