

**INDUSTRIAL  
SPACE  
FOR LEASE**

**±2,862 SF**

Located in  
Schaumburg  
Business Park

Professionally  
Owned by:



**TRANSWESTERN**  
REAL ESTATE  
SERVICES

# 1201 REMINGTON ROAD

Unit 101, Schaumburg, IL 60173 | [Property Website](#)

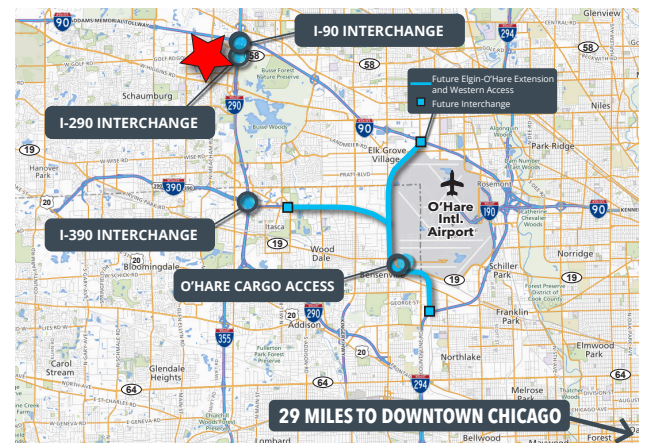


## SPECIFICATIONS

- Building Size: ±51,681 SF
- Land Area: ±2.92 AC
- Available Size: ±2,862 SF
- Total Office Size: ±800 SF
- Ceiling Height: 16' Clear
- Loading: 1 DID
- Power: 200A 120/240V
- Year Built: 1980
- Construction: Masonry
- Lease Rate: Subject to Offer

## HIGHLIGHTS

- Under new ownership
- Very well-maintained facility
- Excellent loading access
- Ample parking
- Close proximity to O'Hare International Airport
- Immediate access to I-90 and I-290 interchanges
- Epicenter of prestigious Schaumburg Business Park
- Professionally owned and managed



**Ross Lehrman**  
Senior Vice President  
847.588.5671  
[ross.lehrman@transwestern.com](mailto:ross.lehrman@transwestern.com)

**Justin Lerner, SIOR**  
Executive Vice President  
847.588.5665  
[justin.lerner@transwestern.com](mailto:justin.lerner@transwestern.com)

**Joe Karmin, SIOR**  
Executive Vice President  
847.588.5670  
[joe.karmin@transwestern.com](mailto:joe.karmin@transwestern.com)

The information provided herein was obtained from sources believed reliable; however, Transwestern makes no guarantees, warranties, or representations as to the completeness or accuracy thereof. The presentation of this information is submitted subject to errors, omissions, change of price or conditions, prior sale or lease, or withdrawal without notice. Copyright © 2026 Transwestern.

**INDUSTRIAL  
SPACE  
FOR LEASE**

**±2,862 SF**

Located in  
Schaumburg  
Business Park

Professionally  
Owned by:

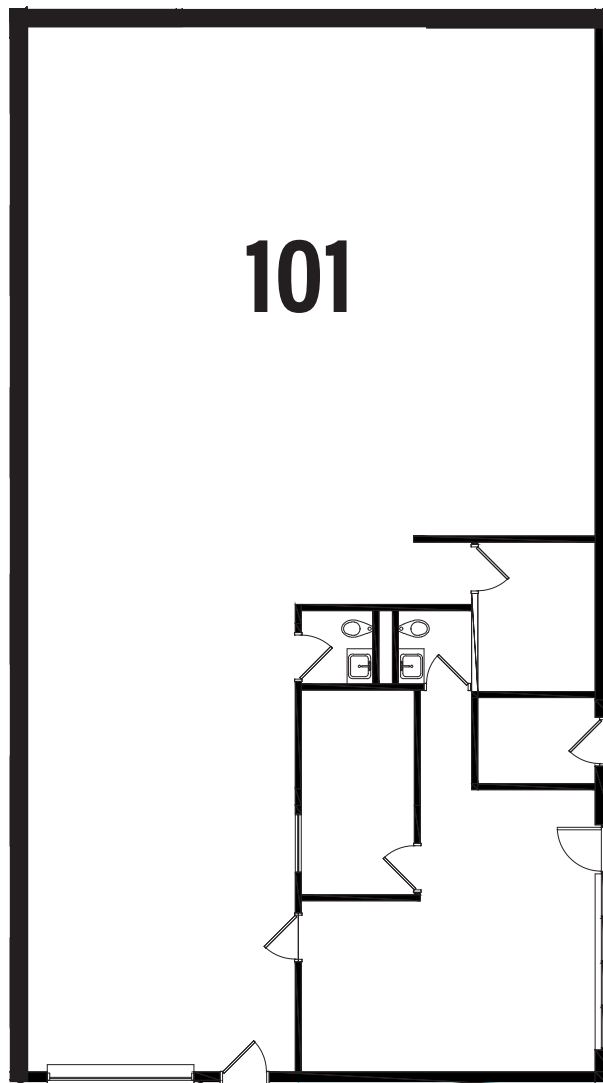


**TRANSWESTERN**  
REAL ESTATE  
SERVICES

# 1201 REMINGTON ROAD

Unit 101, Schaumburg, IL 60173 | [Property Website](#)

## UNIT LAYOUT



**DID**

**Ross Lehrman**  
*Senior Vice President*  
847.588.5671  
ross.lehrman@transwestern.com

**Justin Lerner, SIOR**  
*Executive Vice President*  
847.588.5665  
justin.lerner@transwestern.com

**Joe Karmin, SIOR**  
*Executive Vice President*  
847.588.5670  
joe.karmin@transwestern.com

The information provided herein was obtained from sources believed reliable; however, Transwestern makes no guarantees, warranties, or representations as to the completeness or accuracy thereof. The presentation of this information is submitted subject to errors, omissions, change of price or conditions, prior sale or lease, or withdrawal without notice. Copyright © 2026 Transwestern.

**INDUSTRIAL  
SPACE  
FOR LEASE**

**±2,862 SF**

Located in  
Schaumburg  
Business Park

Professionally  
Owned by:

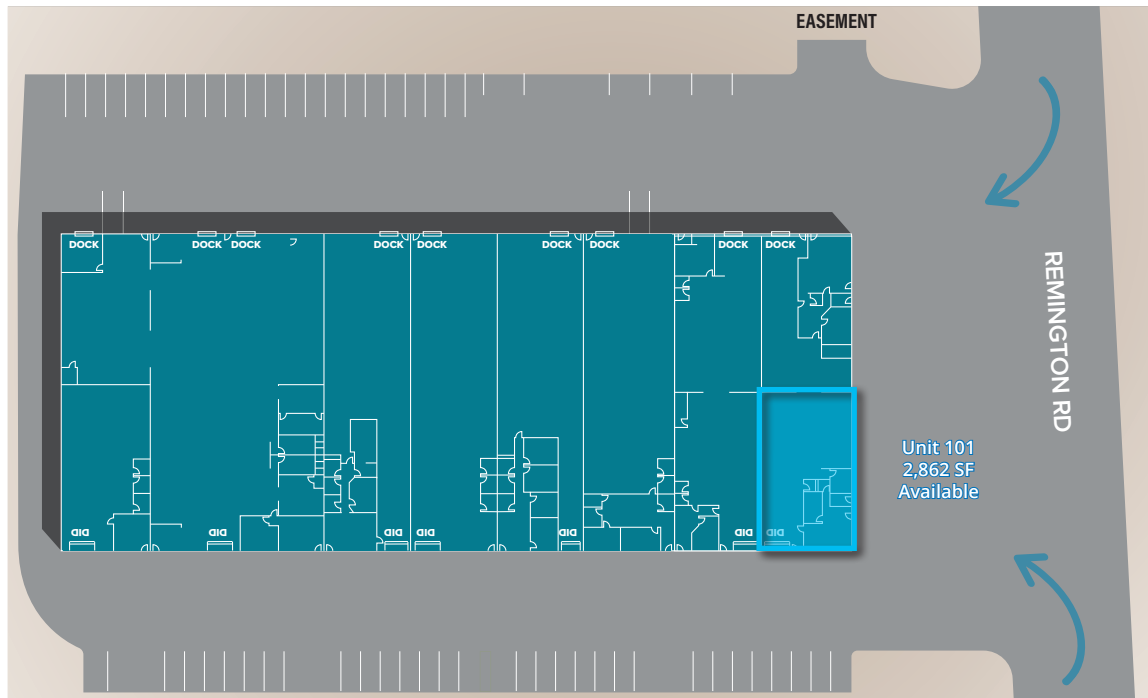


**TRANSWESTERN**  
REAL ESTATE  
SERVICES

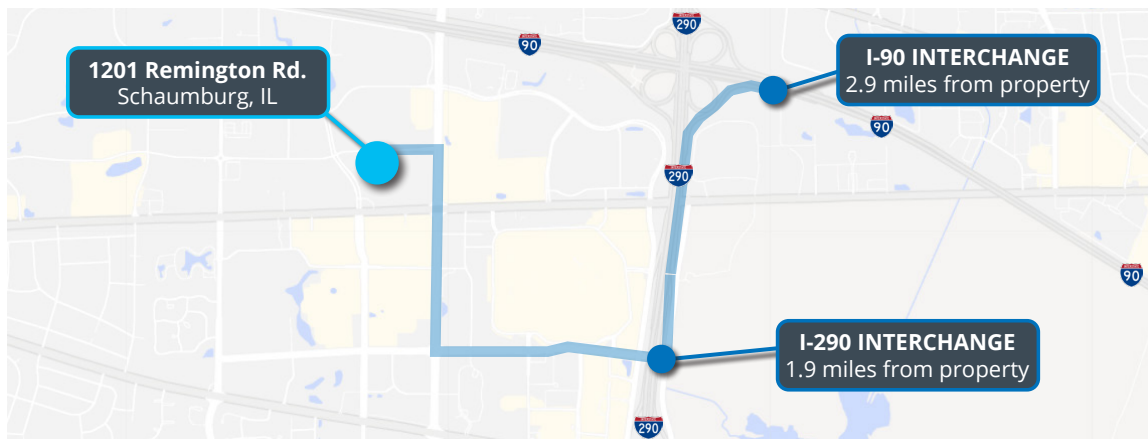
# 1201 REMINGTON ROAD

Unit 101, Schaumburg, IL 60173 | [Property Website](#)

## BUILDING SITE PLAN



## HIGHWAY ACCESS



**Ross Lehrman**  
Senior Vice President  
847.588.5671  
ross.lehrman@transwestern.com

**Justin Lerner, SIOR**  
Executive Vice President  
847.588.5665  
justin.lerner@transwestern.com

**Joe Karmin, SIOR**  
Executive Vice President  
847.588.5670  
joe.karmin@transwestern.com

**INDUSTRIAL  
SPACE  
FOR LEASE**

**±2,862 SF**

Located in  
Schaumburg  
Business Park

Professionally  
Owned by:



# 1201 REMINGTON ROAD

Unit 101, Schaumburg, IL 60173 | [Property Website](#)



## SURROUNDING AMENITIES & SERVICES

- |                     |                        |                        |                         |                       |
|---------------------|------------------------|------------------------|-------------------------|-----------------------|
| 1 Kohl's            | 8 Hobby Lobby          | 15 Woodfield Mall      | 22 Ikea                 | 29 Noodles & Company  |
| 2 Portillo's        | 9 Ross Dress For Less  | 16 Olive Garden        | 23 Roosevelt University | 30 Miller's Ale House |
| 3 Bed Bath & Beyond | 10 PGA Tour Superstore | 17 Shake Shack         | 24 Residence Inn        | 31 Car Dealerships    |
| 4 McDonald's        | 11 Starbucks           | 18 Michael's           | 25 Morton's Steakhouse  | 32 Best Buy           |
| 5 Homewood Suites   | 12 Giordano's          | 19 Kuma's Corner       | 26 Costco               | 33 Life Storage       |
| 6 Sonesta Suites    | 13 Potbelly's          | 20 The Capital Grille  | 27 Buffalo Wild Wings   | 34 Nicor Gas          |
| 7 DoubleTree Hotel  | 14 Panera Bread        | 21 Hyatt Regency Hotel | 28 Five Guys            | 35 Two Men & A Truck  |

**Ross Lehrman**  
Senior Vice President  
847.588.5671  
ross.lehrman@transwestern.com

**Justin Lerner, SIOR**  
Executive Vice President  
847.588.5665  
justin.lerner@transwestern.com

**Joe Karmin, SIOR**  
Executive Vice President  
847.588.5670  
joe.karmin@transwestern.com

The information provided herein was obtained from sources believed reliable; however, Transwestern makes no guarantees, warranties, or representations as to the completeness or accuracy thereof. The presentation of this information is submitted subject to errors, omissions, change of price or conditions, prior sale or lease, or withdrawal without notice. Copyright © 2026 Transwestern.