



OFFICE SPACE FOR LEASE

521 Charles Street, Brainerd, MN 56401

C|C CLOSE CONVERSE
Commercial Real Estate | Business Brokerage

521 Charles Street, PO Box 327, Brainerd, MN 56401 | 218-828-3334 | www.closeconverse.com

Table of Contents

Page

3-4	Features
5	Floor Plan
6	Photos
7	Aerial Photo
8	Section Aerial
9	Section Map
10	Zoning Map
11	Traffic Counts
12	Location Map
13	Demographics
14	Thank You
15	Agency Disclosure
16	Contact

Close Converse: The above information has been obtained from the property owner or other sources that we deem reliable, however, neither the owner nor Close Converse guarantees the accuracy of such information. No part of this information may be reproduced, adapted, or transmitted without the prior written consent of Close Converse.

Office Suite For Lease.

Position your business for success at the West Brainerd Professional Building — a well-maintained and centrally located office property situated between Brainerd and Baxter, with convenient access to major amenities, restaurants, retail, and professional services.



This turnkey lower-level office suite offers an attractive and professional setting ideal for office-service users seeking both value and functionality. Tenants enjoy access to shared amenities including a break room and conference room, adding convenience and flexibility for daily operations and client meetings. Located directly behind McDonald's in a highly accessible west Brainerd location, this is an excellent opportunity to secure affordable, move-in-ready office space in the heart of a thriving business corridor.

Address: 521 Charles Street, Suite 101B, Brainerd, MN 56401

Directions: From Hwy 210/371 intersection in Baxter - East on Hwy 210 (Washington St) approx. 1 1/4 miles - Right (South) on NW 6th St - Property is the SE corner of NW 6th Street and Charles Street

Lot Size: 14,000 sq. ft.

Lot Dimensions: 140' x 100'

Building Size: 5,537 sq. ft. Total
Upper Level: 2,857 sq. ft.
Lower Level: 2,680 sq. ft. **(SPACE AVAILABLE)**

Available Space
Suite 101B: Approx. 106 sq. ft.

Lease Rate:
Suite 101B: \$300/Month Gross (Includes All Utilities Except Phone & Internet)

Continued on next page.

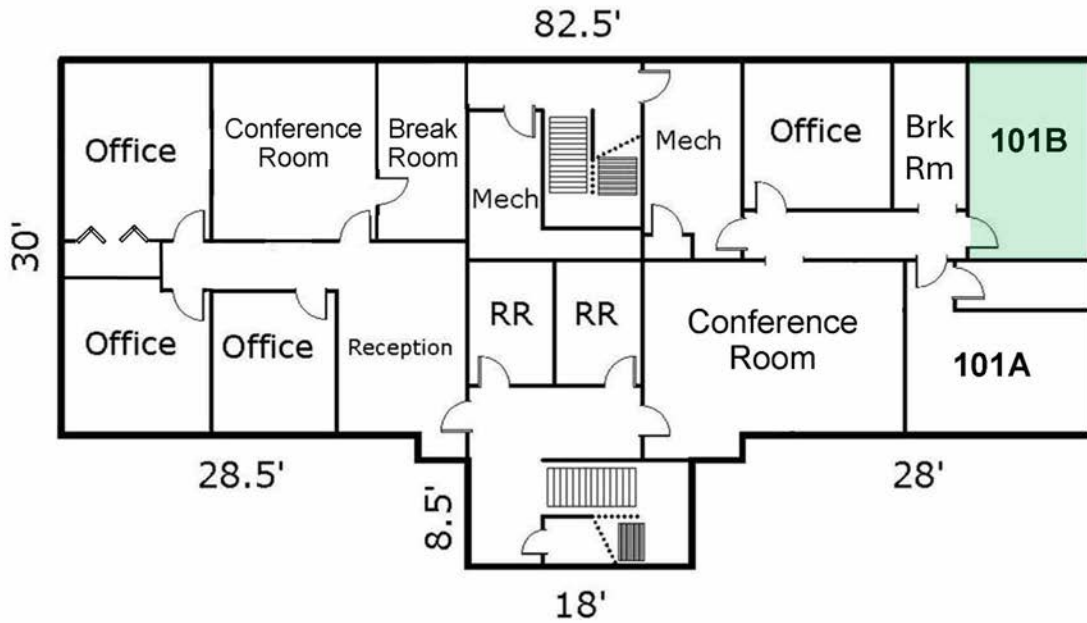
521 Charles St, Brainerd, MN 56401

Features

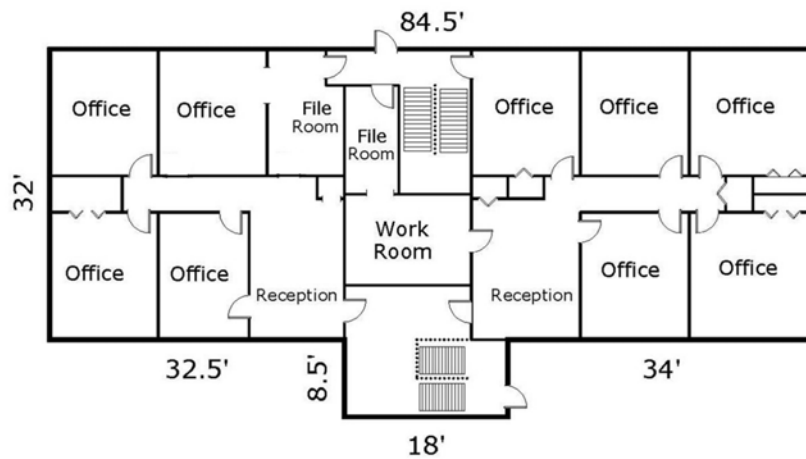
Water & Sewer:	City
Heating:	Natural Gas Forced Air
Cooling:	Central Air - Electric Ground Unit
Electric:	100 Amp, Single Phase
Lighting:	Fluorescent
Year Built:	1975
Remodeled:	2010
Construction:	Wood Frame
Foundation:	Concrete Bock
Roof:	Flat
Exterior:	Stucco
Ceiling Height:	8'
Bathrooms:	2 on Lower Level, Shared by Entire Building
Security:	Yes
Parking:	20 Shared Paved Parking Spaces, plus additional On-Street Parking Available
Frontage:	140' along Charles Street and 100' along NW 6th Street
Zoning:	ME - Makers & Employment
PID#:	41040707
Adjoining Tenants:	Close Converse, Barnabas Health Care, SCI and Jacobson LLC
Neighboring Businesses:	Located near McDonalds, Snow White Laundry & Car Wash, Hamad Upholstery, Neighborhood National Bank, Good Year Tire, Century Link, Tanner Nissan, Wendy's, Caribou, Wells Fargo, Nail Studio, Walgreens, Ace Hardware, Perkins, Burger King, Auto Zone, Mills Honda, Westgate Mall, Westport Shopping Center, Casey's, plus numerous others.

Close Converse: The above information has been obtained from the property owner or other sources that we deem reliable, however, neither the owner nor Close Converse guarantees the accuracy of such information. No part of this information may be reproduced, adapted, or transmitted without the prior written consent of Close Converse.

Lower Level



Upper Level



Close Converse: The above information has been obtained from the property owner or other sources that we deem reliable, however, neither the owner nor Close Converse guarantees the accuracy of such information. No part of this information may be reproduced, adapted, or transmitted without the prior written consent of Close Converse.



Suite 101B



Break Room



Conference Room



Conference Room

Close Converse: The above information has been obtained from the property owner or other sources that we deem reliable, however, neither the owner nor Close Converse guarantees the accuracy of such information. No part of this information may be reproduced, adapted, or transmitted without the prior written consent of Close Converse.

521 Charles St, Brainerd, MN 56401

Aerial Photo



Close Converse: The above information has been obtained from the property owner or other sources that we deem reliable, however, neither the owner nor Close Converse guarantees the accuracy of such information. No part of this information may be reproduced, adapted, or transmitted without the prior written consent of Close Converse.

521 Charles Street, PO Box 327, Brainerd, MN 56401 | 218-828-3334 | www.closeconverse.com



CLOSE CONVERSE
Commercial Real Estate | Business Brokerage

521 Charles St, Brainerd, MN 56401

Section Aerial



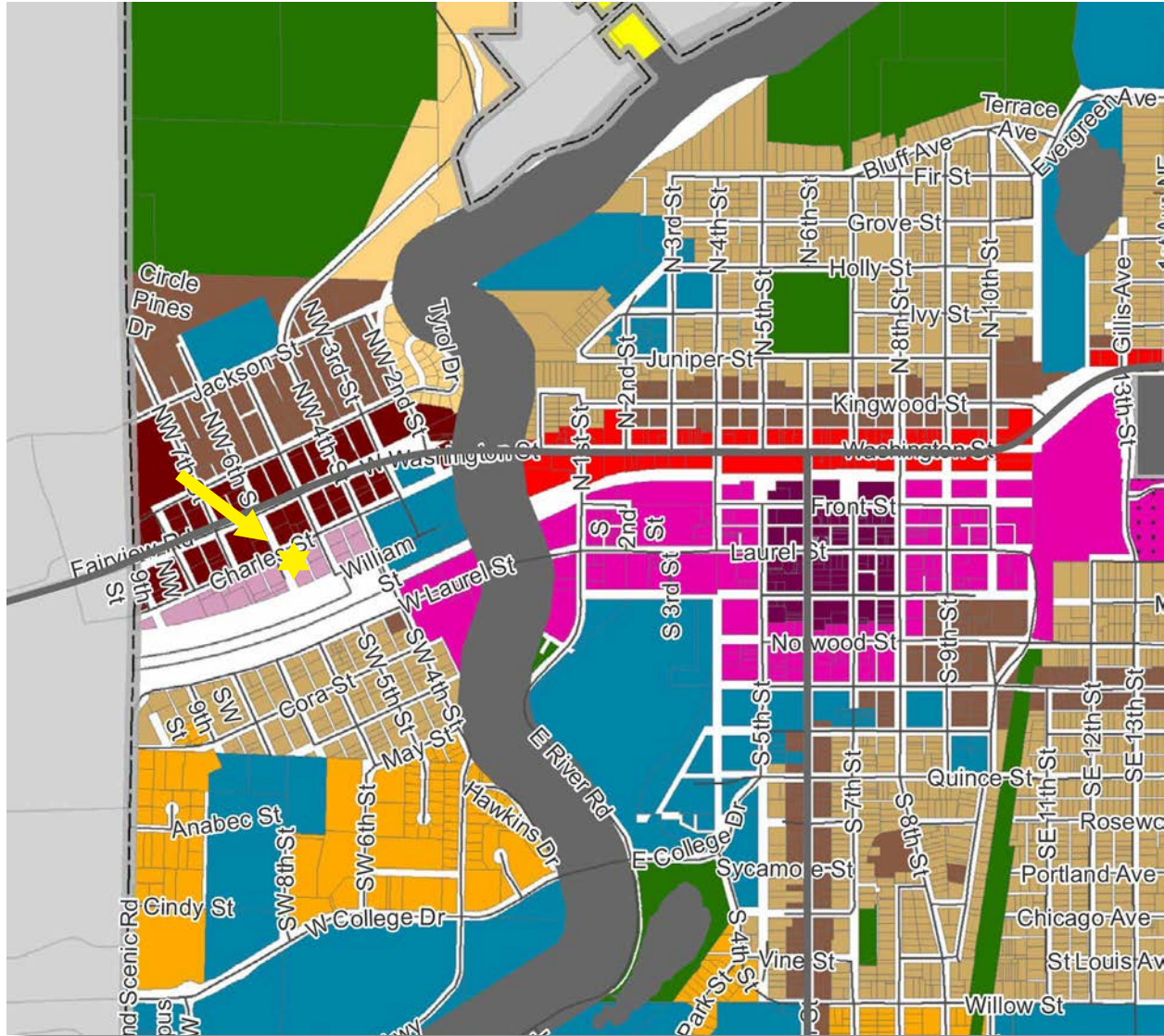
Close Converse: The above information has been obtained from the property owner or other sources that we deem reliable, however, neither the owner nor Close Converse guarantees the accuracy of such information. No part of this information may be reproduced, adapted, or transmitted without the prior written consent of Close Converse.

521 Charles Street, PO Box 327, Brainerd, MN 56401 | 218-828-3334 | www.closeconverse.com



CLOSE CONVERSE
Commercial Real Estate | Business Brokerage

ME - Makers & Employment



Zoning Districts

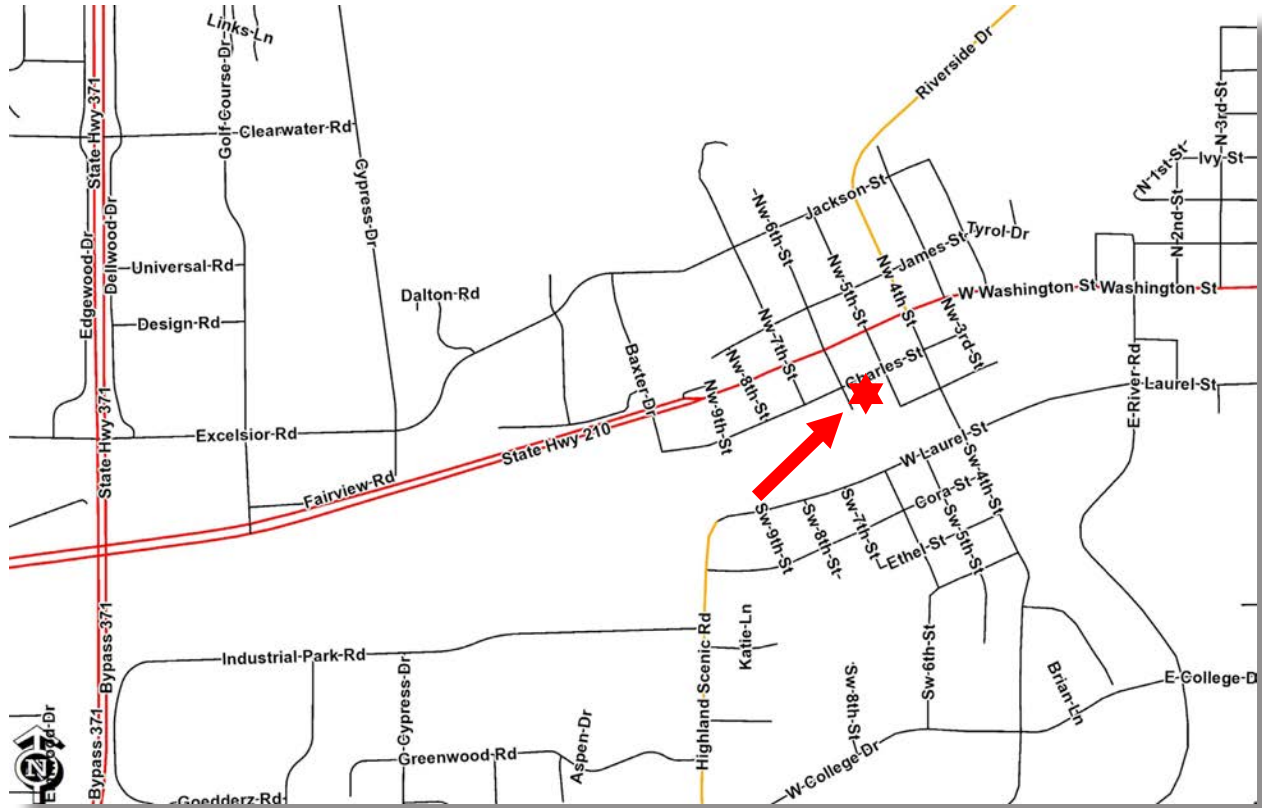
Rural Living 1 (RL-1)	General Commercial (GC)	Main Street (MS)
Rural Living 2 (RL-2)	Commercial Corridor (CC)	Makers and Employment (ME)
Garden Living (GL)	Traditional Neighborhood 1 (TN-1)	General Industrial (GI)
Contemporary Neighborhood 1 (CN-1)	Traditional Neighborhood 2 (TN-2)	Public/Semi-Public (PSP)
Contemporary Neighborhood 2 (CN-2)	Town Center (TC)	Park (P)

Close Converse: The above information has been obtained from the property owner or other sources that we deem reliable, however, neither the owner nor Close Converse guarantees the accuracy of such information. No part of this information may be reproduced, adapted, or transmitted without the prior written consent of Close Converse.



521 Charles St, Brainerd, MN 56401

Location Map



Close Converse: The above information has been obtained from the property owner or other sources that we deem reliable, however, neither the owner nor Close Converse guarantees the accuracy of such information. No part of this information may be reproduced, adapted, or transmitted without the prior written consent of Close Converse.



CLOSE CONVERSE
Commercial Real Estate | Business Brokerage

Trade Area 2025 Population (Includes the following counties):

Crow Wing County	69,034
Cass County	31,987
Total Trade Area Population	101,021

2025 Population (by Zip Code):

Brainerd	32,366
Baxter	9,120

Estimated Summer Population:

Brainerd/Baxter	200,000+
-----------------	----------

Projected Population Growth Change 2025-2030:

Crow Wing County	0.49%
Brainerd	0.52%
Baxter	1.15%

Households in 2025:

Crow Wing County	29,595
Brainerd	13,428
Baxter	3,700

2025 Median Household Income:

Crow Wing County	\$79,236
Brainerd	\$75,710
Baxter	\$79,528

Leading Employers in Crow Wing County in 2025:

- Essentia Health
- Cuyuna Regional Medical Center
- Brainerd School District
- Grandview Lodge
- Breezy Point Resort
- Ascensus
- Clow Stamping
- Crow Wing County
- Madden’s Resort
- Cragun’s Resort
- Walmart
- Ruttgers Bay Lake Resort
- Super One (3 Stores)
- Central lakes College
- Anderson Brothers Construction
- Pequot Lakes School District
- Mills Automotive
- Bang Printing
- City of Brainerd
- Costco
- Bethany Good Samaritan
- Woodland Good Samaritan
- Crosby Ironton School District
- Minnesota Care

Leading Employers Cont.:

- Landis + Gyr
- Northstar Plating
- Nortech Systems
- Lindar
- Avantech
- Reichert Bus
- Lexington
- Growth Zone
- CTC
- Stern Companies
- MNDOT
- MNDNR
- TDS
- Graphic Packaging
- Crow Wing Power

Close Converse: The above information has been obtained from the property owner or other sources that we deem reliable, however, neither the owner nor Close Converse guarantees the accuracy of such information. No part of this information may be reproduced, adapted, or transmitted without the prior written consent of Close Converse.

521 Charles St, Brainerd, MN 56401

Thank You

Thank you for considering this Close Converse opportunity

Close - Converse is pleased to present this real estate opportunity for your review. It is our intention to provide you with the breadth of information and data that will allow you to make an informed decision.

We are here to help

Please review this package and contact us with any questions you may have. We are prepared to discuss how this property meets your needs and desires. Facts, figures and background information will aid in your decision. Should you need specialized counsel in the areas of taxation, law, finance, or other areas of professional expertise, we will be happy to work with your advisor or, we can recommend competent professionals.

How to acquire this opportunity

When you have made a decision to move forward, we can help structure a proposal that covers all the complexities of a commercial real estate transaction. As seller's representatives, we know the seller's specific needs and can tailor a proposal that expresses your desires, provides appropriate contingencies for due diligence and results in a win-win transaction for all parties.

Agency and you

Generally, we are retained by sellers or landlords to represent them in the packaging and marketing of their commercial, investment or development real estate. You are encouraged to review the Minnesota disclosure form "Agency Relationships in Real Estate Transactions" which is enclosed at the end of this package. If you have questions about agency and how it relates to your search for the right property, please ask us. We will answer all your questions and review the alternatives.

Should you wish to pursue this opportunity, please acknowledge your review of "Agency Relationships" by signing, dating and returning it to us.

Close Converse: The above information has been obtained from the property owner or other sources that we deem reliable, however, neither the owner nor Close Converse guarantees the accuracy of such information. No part of this information may be reproduced, adapted, or transmitted without the prior written consent of Close Converse.

521 Charles Street, PO Box 327, Brainerd, MN 56401 | 218-828-3334 | www.closeconverse.com

Agency Disclosure

AGENCY RELATIONSHIPS IN REAL ESTATE TRANSACTIONS

1. Page 1

2. **MINNESOTA LAW REQUIRES** that early in any relationship, real estate brokers or salespersons discuss with consumers what type of agency representation or relationship they desire.⁽¹⁾ The available options are listed below. This is not a contract. This is an agency disclosure form only. If you desire representation you must enter into a written contract, according to state law (a listing contract or a buyer/tenant representation contract). Until such time as you choose to enter into a written contract for representation, you will be treated as a customer and will not receive any representation from the broker or salesperson. The broker or salesperson will be acting as a Facilitator (see paragraph IV on page two (2)), unless the broker or salesperson is representing another party, as described below.

9. **ACKNOWLEDGMENT: I/We acknowledge that I/we have been presented with the below-described options. I/We understand that until I/we have signed a representation contract, I/we am/are not represented by the broker/salesperson. I/We understand that written consent is required for a dual agency relationship.**

12. **THIS IS A DISCLOSURE ONLY, NOT A CONTRACT FOR REPRESENTATION.**

13. _____
(Signature) (Date) (Signature) (Date)

14. i. **Seller's/Landlord's Broker:** A broker who lists a property, or a salesperson who is licensed to the listing broker, represents the Seller/Landlord and acts on behalf of the Seller/Landlord. A Seller's/Landlord's broker owes to the Seller/Landlord the fiduciary duties described on page two (2).⁽²⁾ The broker must also disclose to the Buyer material facts as defined in MN Statute 82.68, Subd. 3, of which the broker is aware that could adversely and significantly affect the Buyer's use or enjoyment of the property. (MN Statute 82.68, Subd. 3 does not apply to rental/lease transactions.) If a broker or salesperson working with a Buyer/Tenant as a customer is representing the Seller/Landlord, they must act in the Seller's/Landlord's best interest and must tell the Seller/Landlord any information disclosed to them, except confidential information acquired in a facilitator relationship (see paragraph IV on page two (2)). In that case, the Buyer/Tenant will not be represented and will not receive advice and counsel from the broker or salesperson.

25. ii. **Buyer's/Tenant's Broker:** A Buyer/Tenant may enter into an agreement for the broker or salesperson to represent and act on behalf of the Buyer/Tenant. The broker may represent the Buyer/Tenant only, and not the Seller/Landlord, even if they are being paid in whole or in part by the Seller/Landlord. A Buyer's/Tenant's broker owes to the Buyer/Tenant the fiduciary duties described on page two (2).⁽²⁾ The broker must disclose to the Buyer material facts as defined in MN Statute 82.68, Subd. 3, of which the broker is aware that could adversely and significantly affect the Buyer's use or enjoyment of the property. (MN Statute 82.68, Subd. 3 does not apply to rental/lease transactions.) If a broker or salesperson working with a Seller/Landlord as a customer is representing the Buyer/Tenant, they must act in the Buyer's/Tenant's best interest and must tell the Buyer/Tenant any information disclosed to them, except confidential information acquired in a facilitator relationship (see paragraph IV on page two (2)). In that case, the Seller/Landlord will not be represented and will not receive advice and counsel from the broker or salesperson.

35. iii. **Dual Agency - Broker Representing both Seller/Landlord and Buyer/Tenant:** Dual agency occurs when one broker or salesperson represents both parties to a transaction, or when two salespersons licensed to the same broker each represent a party to the transaction. Dual agency requires the informed consent of all parties, and means that the broker and salesperson owe the same duties to the Seller/Landlord and the Buyer/Tenant. This role limits the level of representation the broker and salesperson can provide, and prohibits them from acting exclusively for either party. In a dual agency, confidential information about price, terms and motivation for pursuing a transaction will be kept confidential unless one party instructs the broker or salesperson in writing to disclose specific information about them. Other information will be shared. Dual agents may not advocate for one party to the detriment of the other.⁽²⁾

44. Within the limitations described above, dual agents owe to both Seller/Landlord and Buyer/Tenant the fiduciary duties described below.⁽²⁾ Dual agents must disclose to Buyers material facts as defined in MN Statute 82.68, Subd. 3, of which the broker is aware that could adversely and significantly affect the Buyer's use or enjoyment of the property. (MN Statute 82.68, Subd. 3 does not apply to rental/lease transactions.)

49. IV. **Facilitator:** A broker or salesperson who performs services for a Buyer/Tenant, a Seller/Landlord or both but does not represent either in a fiduciary capacity as a Buyer's/Tenant's Broker, Seller's/Landlord's Broker or Dual Agent. **THE FACILITATOR BROKER OR SALESPERSON DOES NOT OWE ANY PARTY ANY OF THE FIDUCIARY DUTIES LISTED BELOW, EXCEPT CONFIDENTIALITY, UNLESS THOSE DUTIES ARE INCLUDED IN A WRITTEN FACILITATOR SERVICES AGREEMENT.** The facilitator broker or salesperson owes the duty of confidentiality to the party but owes no other duty to the party except those duties required by law or contained in a written facilitator services agreement, if any. In the event a facilitator broker or salesperson working with a Buyer/Tenant shows a property listed by the facilitator broker or salesperson, then the facilitator broker or salesperson must act as a Seller's/Landlord's Broker (see paragraph I on page one (1)). In the event a facilitator broker or salesperson, working with a Seller/Landlord, accepts a showing of the property by a Buyer/Tenant being represented by the facilitator broker or salesperson, then the facilitator broker or salesperson must act as a Buyer's/Tenant's Broker (see paragraph II on page one (1)).

61. ⁽¹⁾ This disclosure is required by law in any transaction involving property occupied or intended to be occupied by one to four families as their residence.

63. ⁽²⁾ The fiduciary duties mentioned above are listed below and have the following meanings:
64. **Loyalty** - broker/salesperson will act only in client(s)' best interest.
65. **Obedience** - broker/salesperson will carry out all client(s)' lawful instructions.
66. **Disclosure** - broker/salesperson will disclose to client(s) all material facts of which broker/salesperson has knowledge which might reasonably affect the client(s)' use and enjoyment of the property.
68. **Confidentiality** - broker/salesperson will keep client(s)' confidences unless required by law to disclose specific information (such as disclosure of material facts to Buyers).
70. **Reasonable Care** - broker/salesperson will use reasonable care in performing duties as an agent.
71. **Accounting** - broker/salesperson will account to client(s) for all client(s)' money and property received as agent.

72. ⁽³⁾ If Seller(s)/Landlord(s) elect(s) not to agree to a dual agency relationship, Seller(s)/Landlord(s) may give up the opportunity to sell/lease the property to Buyer(s)/Tenant(s) represented by the broker/salesperson. If Buyer(s)/Tenant(s) elect(s) not to agree to a dual agency relationship, Buyer(s)/Tenant(s) may give up the opportunity to purchase/lease properties listed by the broker.

76. **NOTICE REGARDING PREDATORY OFFENDER INFORMATION:** Information regarding the predatory offender registry and persons registered with the predatory offender registry under MN Statute 243.166 may be obtained by contacting the local law enforcement offices in the community where the property is located, or the Minnesota Department of Corrections at (651) 361-7200, or from the Department of Corrections Web site at <https://coms.doc.state.mn.us/publicreglstrantsearch>

MNAGCYDISC-2 (8/25)

Close Converse: The above information has been obtained from the property owner or other sources that we deem reliable, however, neither the owner nor Close Converse guarantees the accuracy of such information. No part of this information may be reproduced, adapted, or transmitted without the prior written consent of Close Converse.

521 Charles St, Brainerd, MN 56401

Contact

Office Location

521 Charles Street
Suite 201
Brainerd, MN 56401

Mailing Address

PO Box 327
Brainerd, MN 56401

Phone

218-828-3334

Fax

218-828-4330

Website

www.CloseConverse.com

Agents

Chris Close, CCIM

C: 218-831-7510

chris@closeconverse.com

Tim Miller, CCIM

C: 218-838-8772

tim@closeconverse.com

Nate Grotzke, CCIM

C: 218-838-1000

nate@closeconverse.com

Close Converse: The above information has been obtained from the property owner or other sources that we deem reliable, however, neither the owner nor Close Converse guarantees the accuracy of such information. No part of this information may be reproduced, adapted, or transmitted without the prior written consent of Close Converse.

521 Charles Street, PO Box 327, Brainerd, MN 56401 | 218-828-3334 | www.closeconverse.com