

WESTECH 360

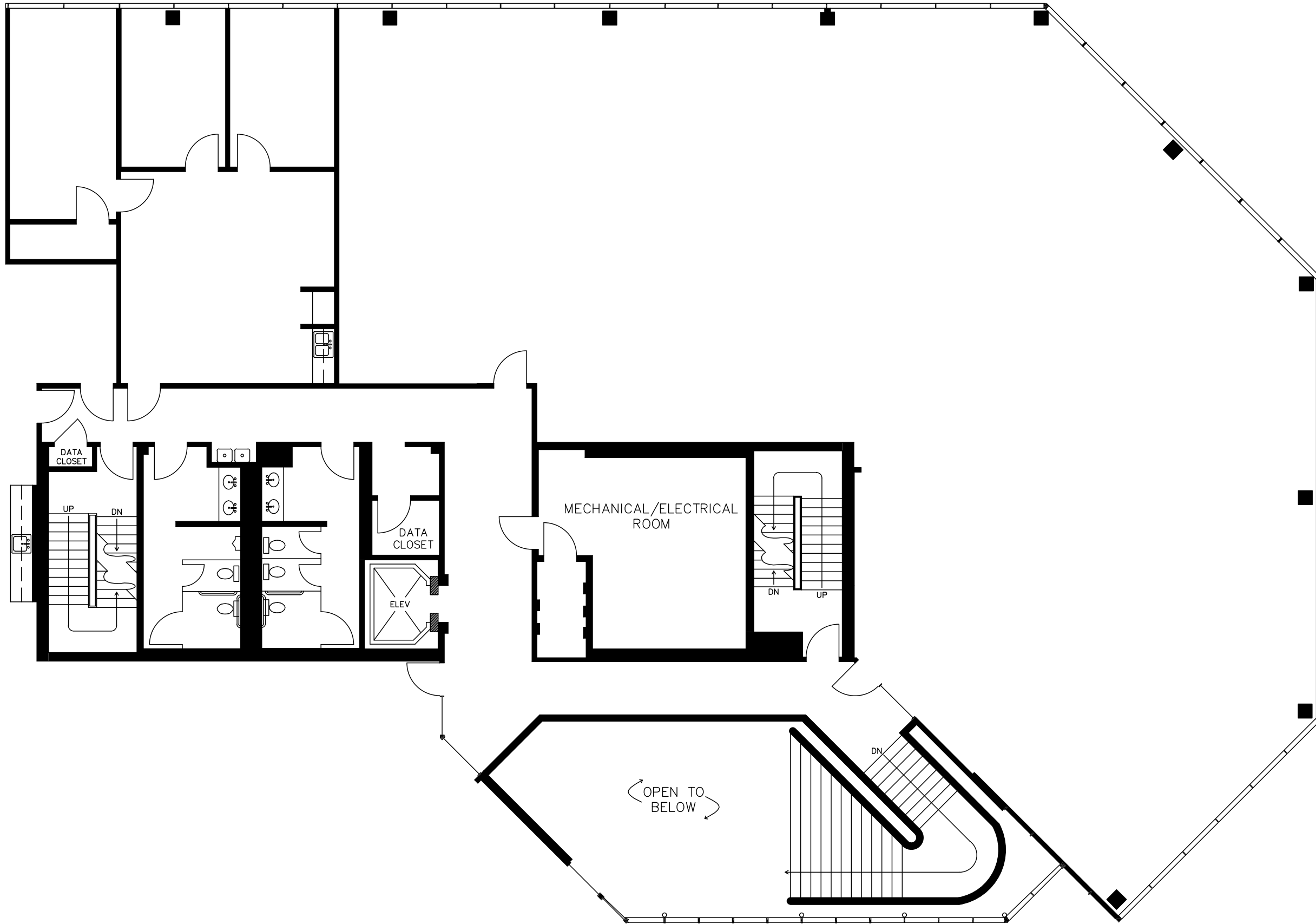
Proposed Spec Suites 3200 and 3220 Chosen Scenario

V5 | CAPTURED REDLINE FOR RED DESIGN TRANSFER | 09.16.2025

NOT APPROVED FOR CONSTRUCTION

nimble.
A Design Consultancy

AS-BUILT (PER TW)



THIS PACKAGE IS NOT APPROVED FOR CONSTRUCTION

EXISTING CONDITION PHOTOS



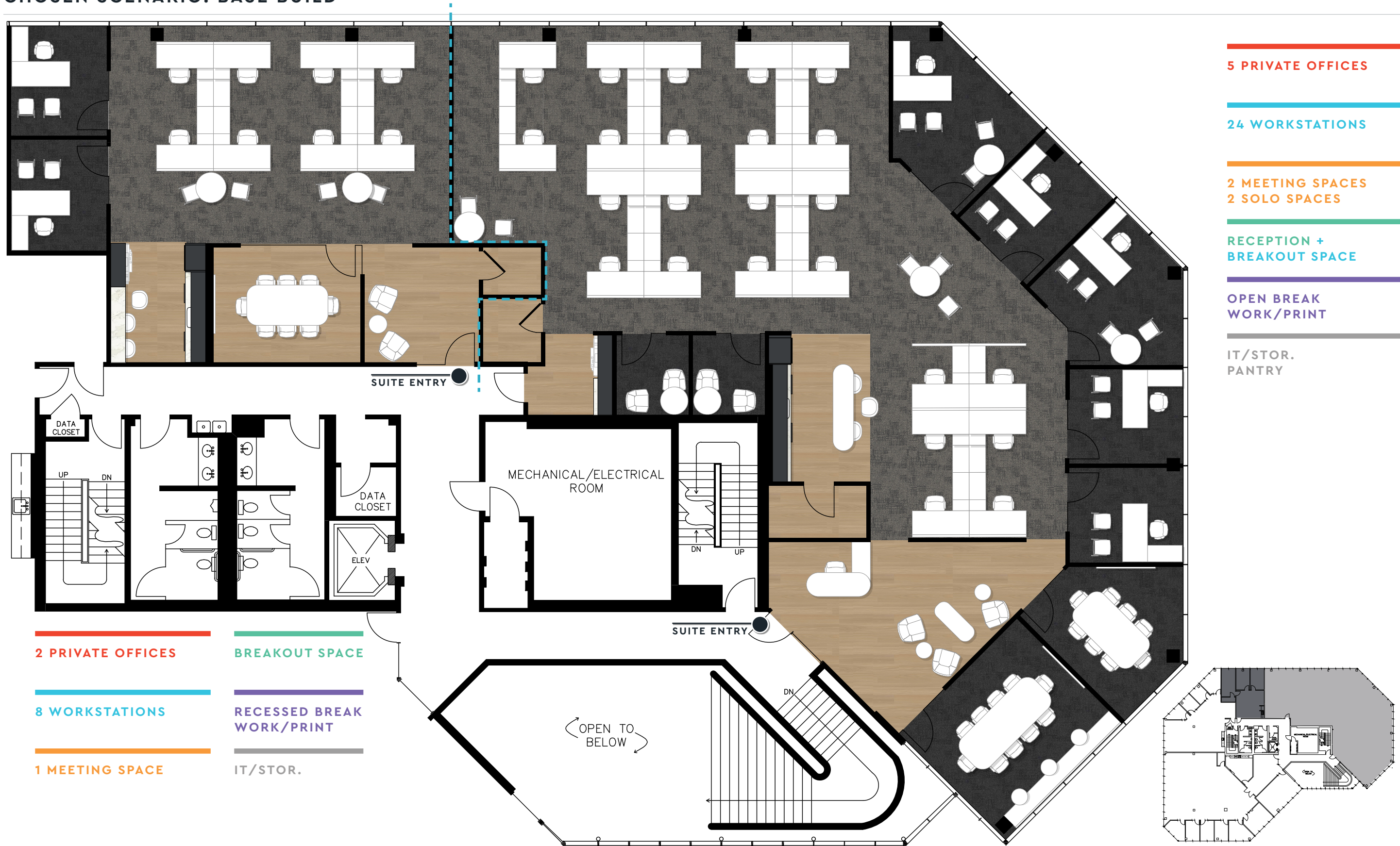
THIS PACKAGE IS NOT APPROVED FOR CONSTRUCTION

CHOSEN SCENARIO: BASE BUILD



THIS PACKAGE IS NOT APPROVED FOR CONSTRUCTION

CHOSEN SCENARIO: BASE BUILD



5 PRIVATE OFFICES

24 WORKSTATIONS

2 MEETING SPACES
2 SOLO SPACES

RECEPTION +
BREAKOUT SPACE

OPEN BREAK
WORK/PRINT

IT/STOR.
PANTRY

2 PRIVATE OFFICES

BREAKOUT SPACE

8 WORKSTATIONS

RECESSED BREAK
WORK/PRINT

1 MEETING SPACE

IT/STOR.

THIS PACKAGE IS NOT APPROVED FOR CONSTRUCTION

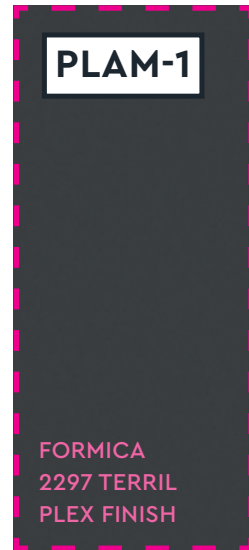
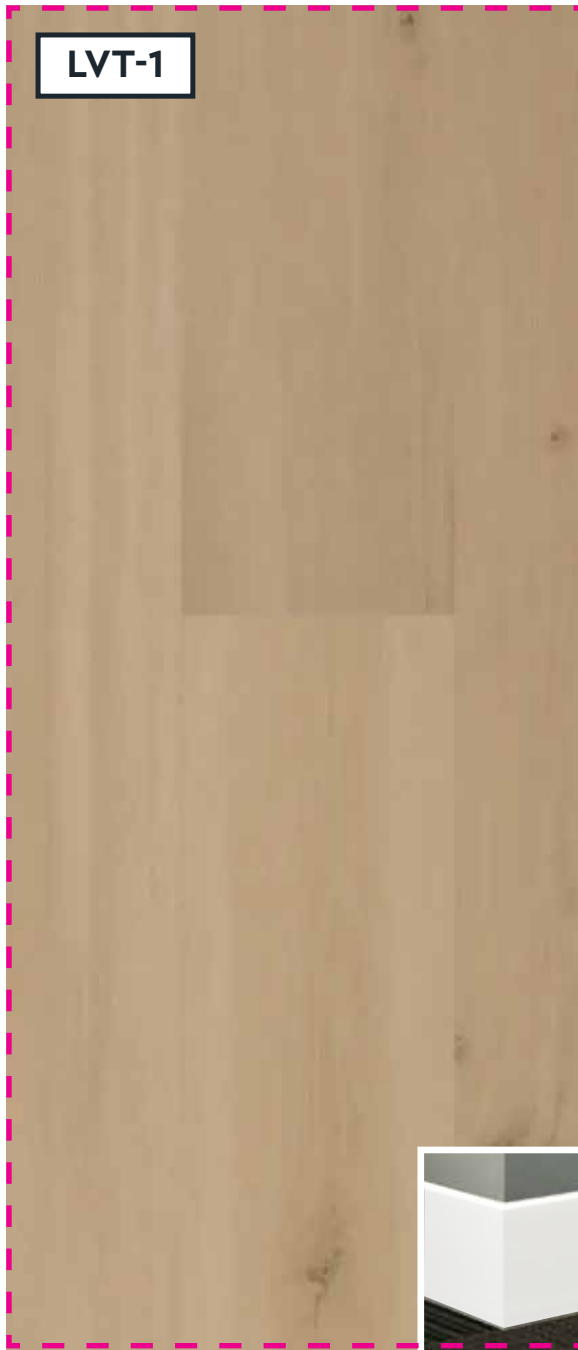
CHOSEN SCENARIO: GROWTH SPACE VISUALIZATION



THIS PACKAGE IS NOT APPROVED FOR CONSTRUCTION

PRELIM. FINISH SELECTIONS

= DENOTES CHANGE TO CAPTURE



INTERFACE
PUPPY LOVE
107350 SONNET
NON-DIRECTIONAL INSTALL

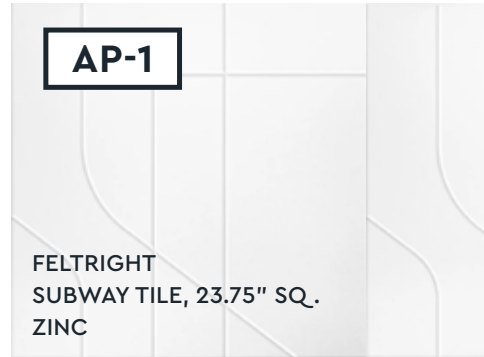
INTERFACE
PUPPY LOVE
107353 MYSTERIOUS
NON-DIRECTIONAL INSTALL

RB-1: ROPPE CANDID #60 PV4060 PROFILE,
161 SNOW
RB-2: ROPPE CANDID #60 PV4060 PROFILE,
COLOR: 100 BLACK (PAIRS WITH PT-2 WALLS)

RB-1: ROPPE CANDID #60 PV4060 PROFILE,
161 SNOW
RB-2: ROPPE CANDID #60 PV4060 PROFILE,
COLOR: 100 BLACK (PAIRS WITH PT-2 WALLS)

MANNINGTON, ADURA®RIGID LUXURY VINYL
SWISS OAK | COLOR: ALMOND
PRODUCT NUMBER: RGP740 | 7" X 48" PLANK

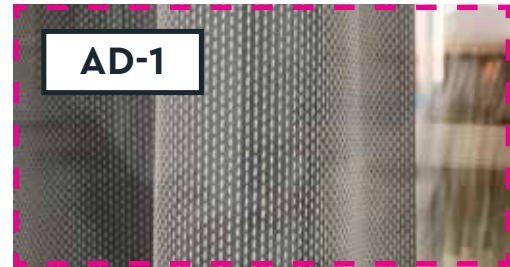
RB-1: ROPPE CANDID #60 PV4060 PROFILE,
161 SNOW
RB-2: ROPPE CANDID #60 PV4060 PROFILE,
COLOR: 100 BLACK (PAIRS WITH PT-2 WALLS)



WOLF GORDON
AWAKEN
BL50076AK, LIL' FOGGY
TYPE II DIGITAL WC

WILSONART
CALCATA
OLYMPUS Q4067
2CM

FIRECLAY TILE
HOOD RIVER
3" X 9" GLOSS
VERTICAL OFFSET INSTALL
MAPEI 5227 CASTLE WALL



VESCOM
FERMOZA, 8090.17
INVERTED PLEAT
WITH RED DESIGN-SOURCED MOTORIZED PANEL TRACK
(WHITE TO BLEND WITH ACT)

THIS PACKAGE IS NOT APPROVED FOR CONSTRUCTION

PRELIM. APPLIANCE AND HARDWARE SELECTIONS

= DENOTES CHANGE TO CAPTURE



CAFÉ™
ENERGY STAR® 18.6 CU. FT. COUNTER-DEPTH
FRENCH-DOOR REFRIGERATOR | CWE19SP3ND1
MATTE BLACK | BRUSHED BRASS HARDWARE



CAFÉ™
BUILT-IN MICROWAVE DRAWER OVEN
CWL112P3RD5 | MATTE BLACK



MOEN
NIO SMART KITCHEN ONE-HANDLE HIGH
ARC PULLDOWN KITCHEN FAUCET
S75005BL | MATTE BLACK



GE® ENERGY STAR®
ADA COMPLIANT STAINLESS STEEL
INTERIOR PANEL-READY DISHWASHER
WITH SANITIZE CYCLE
GDT226SILII | IN PLAM-1



ELKAY
QUARTZ CLASSIC® 25" X 18-1/2" X 5-1/2"
SINGLE BOWL UNDERMOUNT ADA SINK WITH
PERFECT DRAIN® WHITE, ELGUAD2519PDWHO



AMEROCK
MONUMENT 6-1/4" CENTER TO CENTER
HANDLE CABINET PULL
MODEL: BP36572CZ | CHAMPAGNE BRASS



AMEROCK
MONUMENT 12-5/8" CENTER TO CENTER
HANDLE CABINET PULL
MODEL: BP36911CZ | CHAMPAGNE BRASS

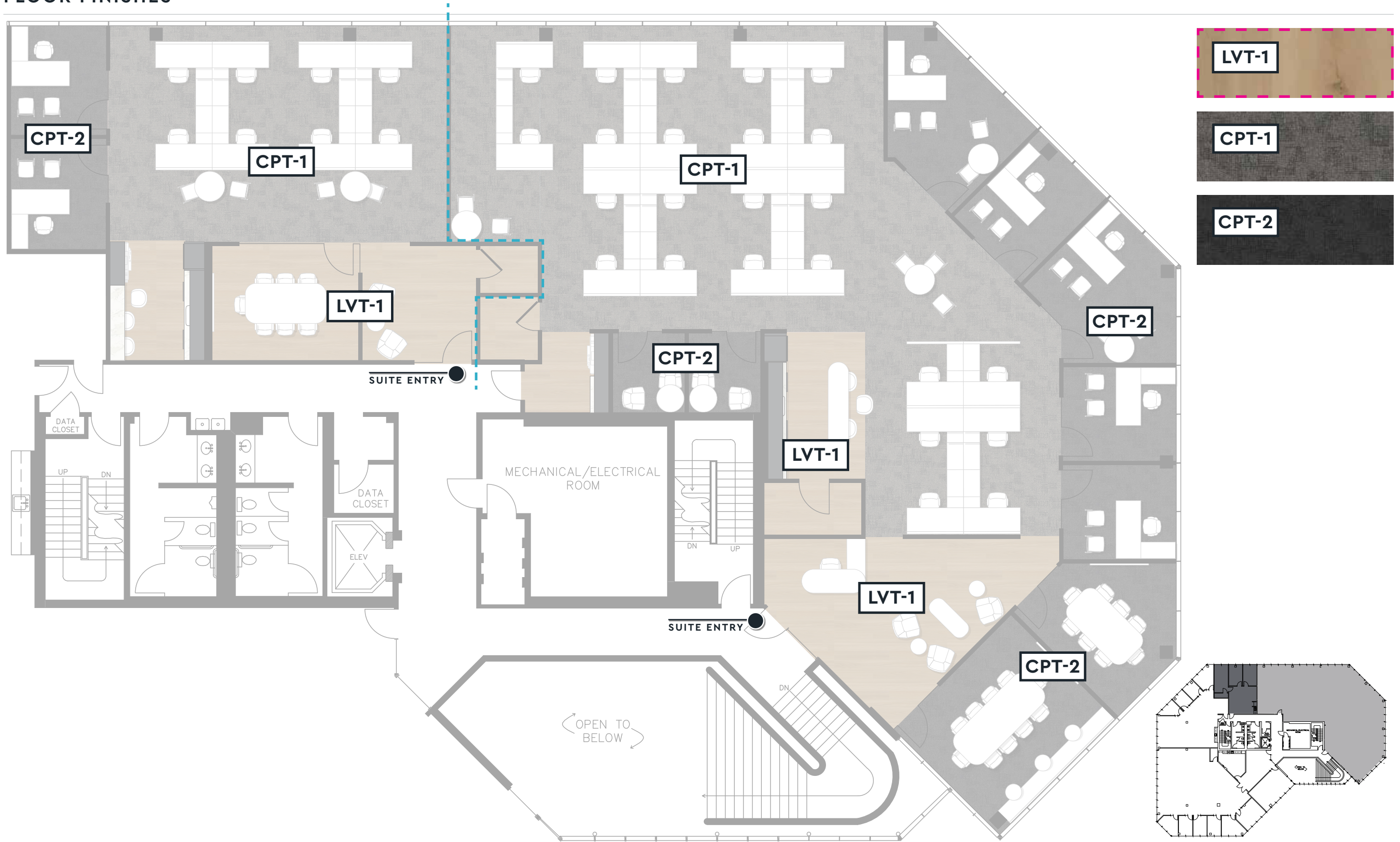


AMEROCK
MONUMENT 18"L APPLIANCE PULL
MODEL: BP54046CZ | CHAMPAGNE BRASS

THIS PACKAGE IS NOT APPROVED FOR CONSTRUCTION

FLOOR FINISHES

- DENOTES CHANGE TO CAPTURE



THIS PACKAGE IS NOT APPROVED FOR CONSTRUCTION

- DENOTES CHANGE TO CAPTURE

WALL FINISHES



THIS PACKAGE IS NOT APPROVED FOR CONSTRUCTION

CEILING STRATEGY | PRIMARY PLAN, PLUS CAPTURED ALTS. TO PRICE

RETAIN EXISTING GRID AND ACT

PRICE AS ALT: PAINTED OTS (P-1) AT RECEPTION AND OPEN BREAK AREAS ONLY IN SUITE 3200

PRICE AS ALT: PAINTED OTS (P-1) AT BREAKOUT RECEPTION AND OPEN BREAK AREAS ONLY IN SUITE 3220

REVIEW EXISTING LED 2X2 TROFFERS TO ENSURE SPEC SUITE STANDARD FIXTURE AND COLOR TEMP.

PRICE SPEC SUITE STANDARD CAN FIXTURES (DIMMABLE) IN MEETING SPACES AND SOLO SPACES ONLY

SPEC SUITE STANDARD RECESSED W. PLAM-VALENCE UNDERCOUNTER LIGHTING AT WORK/PRINT AND PRIMARY BREAK UPPER CABINETS

THIS PACKAGE IS NOT APPROVED FOR CONSTRUCTION

ADD'LS

NOTE NEW SIDELIGHT AT SUITE 3220 ENTRY | EXISTING SUITE ENTRY TO BE ASSUMED AT SUITE 3200, BUT PLEASE DISTRIBUTE EXISTING CONDITION PHOTOS TO CONFIRM.

NEW SPEC SUITE STANDARD MANUAL ROLLER SHADES THROUGHOUT

NEW INTERIOR DOORS (PLAM-2) AND MATTE BLACK DOOR HARDWARE

RACO FLUSH GLAZE SYSTEM IN MATTE BLACK FOR OFF-RECEPTION MEETING SPACES IN SUITE 3200

BLACK MATTE CHANNELS WITH 3'-0" STANDARD SIDELIGHTS FOR ALL PLANNED PRIVATE OFFICES

SEE MATTE BLACK APPLIANCES AND NEW HARDWARE SPECS ON PG.8

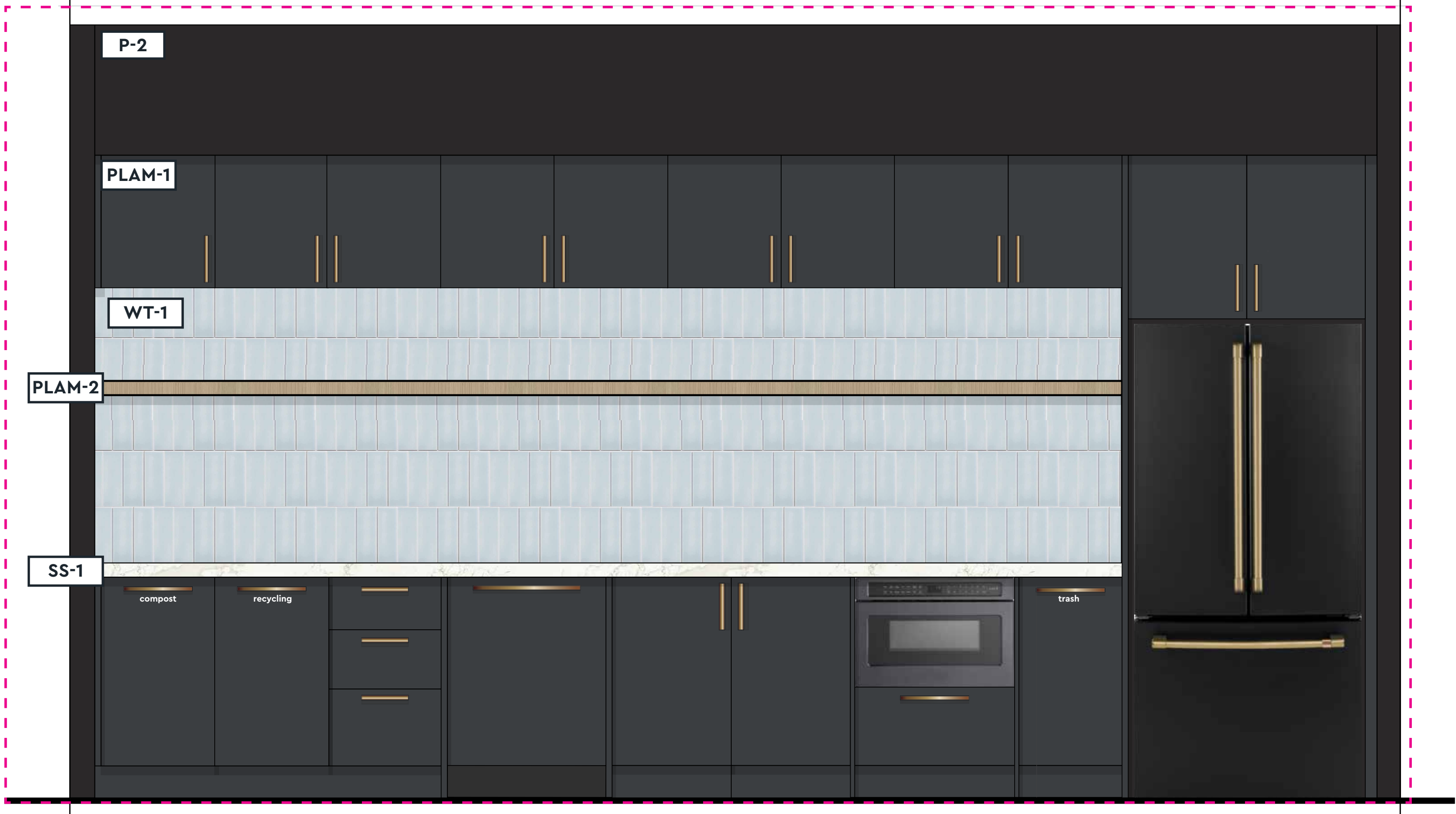
ADD ELECTRIFIED DOOR STRIKE FOR FUTURE TENANT-COORDINATED CARD ACCESS READERS AT BOTH PRIMARY ENTRIES

PRICE AS ALT: AD-1 AT SUITE 3200 MEETING SPACES

PRICE AS ALT: WC-1 WHERE SHOWN ON FINISH PLAN

THIS PACKAGE IS NOT APPROVED FOR CONSTRUCTION

CONTEXTUAL ELEVATIONS: SUITE 3200 • PRIMARY OPEN BREAK



THIS PACKAGE IS NOT APPROVED FOR CONSTRUCTION

CONTEXTUAL ELEVATIONS: SUITE 3220 • PRIMARY RECESSED BREAK

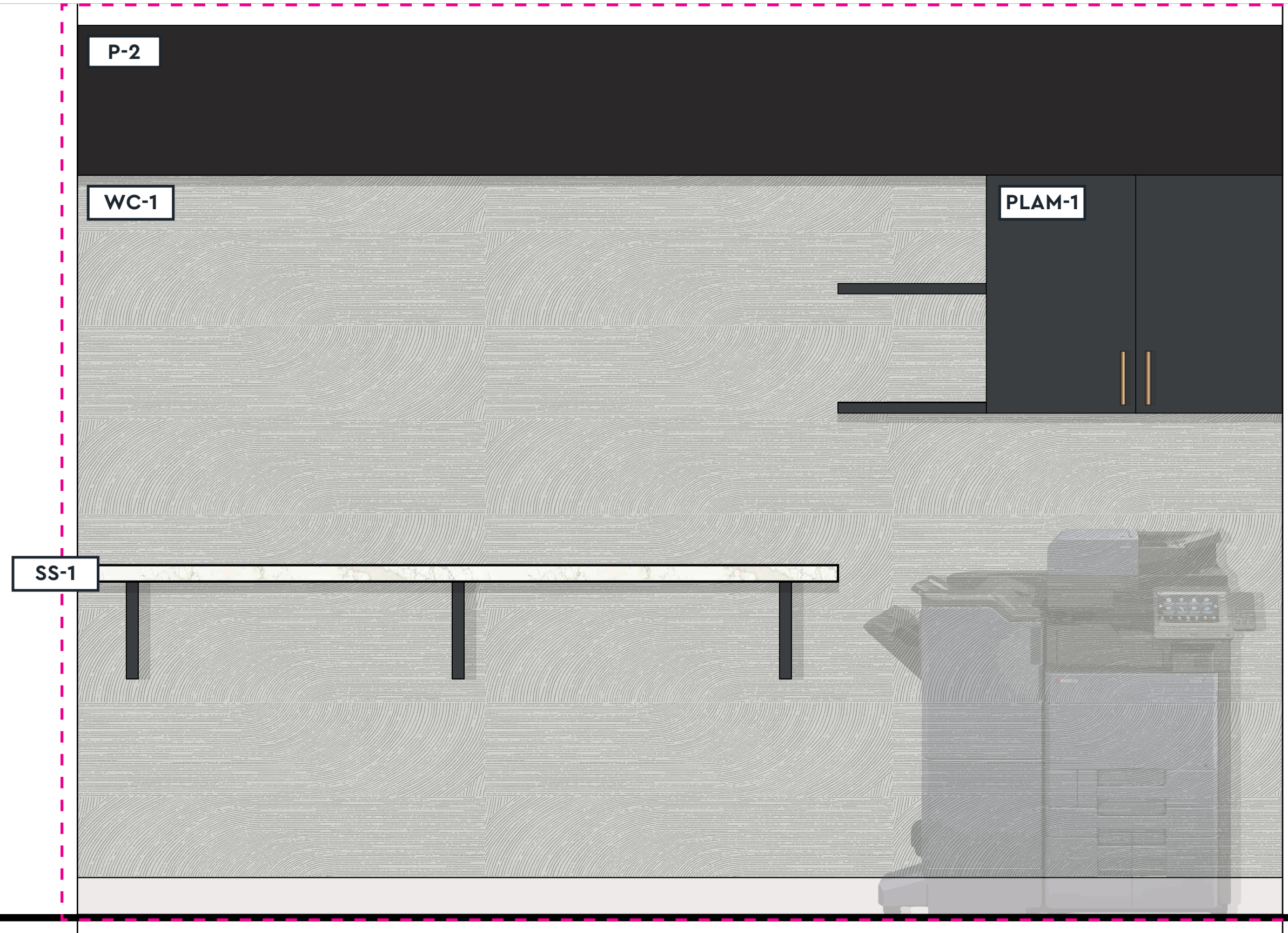
= DENOTES CHANGE TO CAPTURE



THIS PACKAGE IS NOT APPROVED FOR CONSTRUCTION

= DENOTES CHANGE TO CAPTURE

CONTEXTUAL ELEVATIONS: SUITE 3220 • OPPOSITE 42" H BAR HEIGHT COUNTER AND WORK/PRINT UPPER CABS



THIS PACKAGE IS NOT APPROVED FOR CONSTRUCTION



NOT APPROVED FOR CONSTRUCTION

STUDIO INFO

268 Church Street
Marietta, Georgia 30060
hello@nimbledesignco.com

@ nimbledesignco
in nimble-a-design-consultancy
MeetNimble.com

STUDIO CONTACT

Candice Riley Campbell
candice@nimbledesignco.com
404.695.1922

THIS PACKAGE WAS CONCEPTUALIZED FOR INTERNAL DISCUSSION ONLY AND IS NOT APPROVED FOR CONSTRUCTION.

All noted finishes and design direction within should be considered wholly schematic in nature. No finishes or direction should be pulled from this document for implementation, as formal submittal process must be followed. Formal design planning, ADA compliance, and CAD documentation must be completed by a registered architect and reviewed by Nimble. and Keppel Pacific Oak US REIT prior to receiving written approval.

09.16.2025

