

# WESTWOOD BUSINESS PARK

1850-1890 CROWN DRIVE | DALLAS, TEXAS 75234



## PROPERTY HIGHLIGHTS

- Five Building Project Totaling 111,807 SF
- 2,207 SF to 6,451 SF Suites Available
- Grade Level Loading
- Clear Height: 12'
- Year Built: 1987
- Ample Parking
- Professionally Landscaped
- 24/7 Security Monitoring
- Strong/Responsive Property Management
- Direct Access to I-35 & I-635



**JON SKIDMORE** | 214.442.8942 | [jskidmore@holtlunsford.com](mailto:jskidmore@holtlunsford.com)  
**LUKE FLOYD** | 972.585.5109 | [lfloyd@holtlunsford.com](mailto:lfloyd@holtlunsford.com)



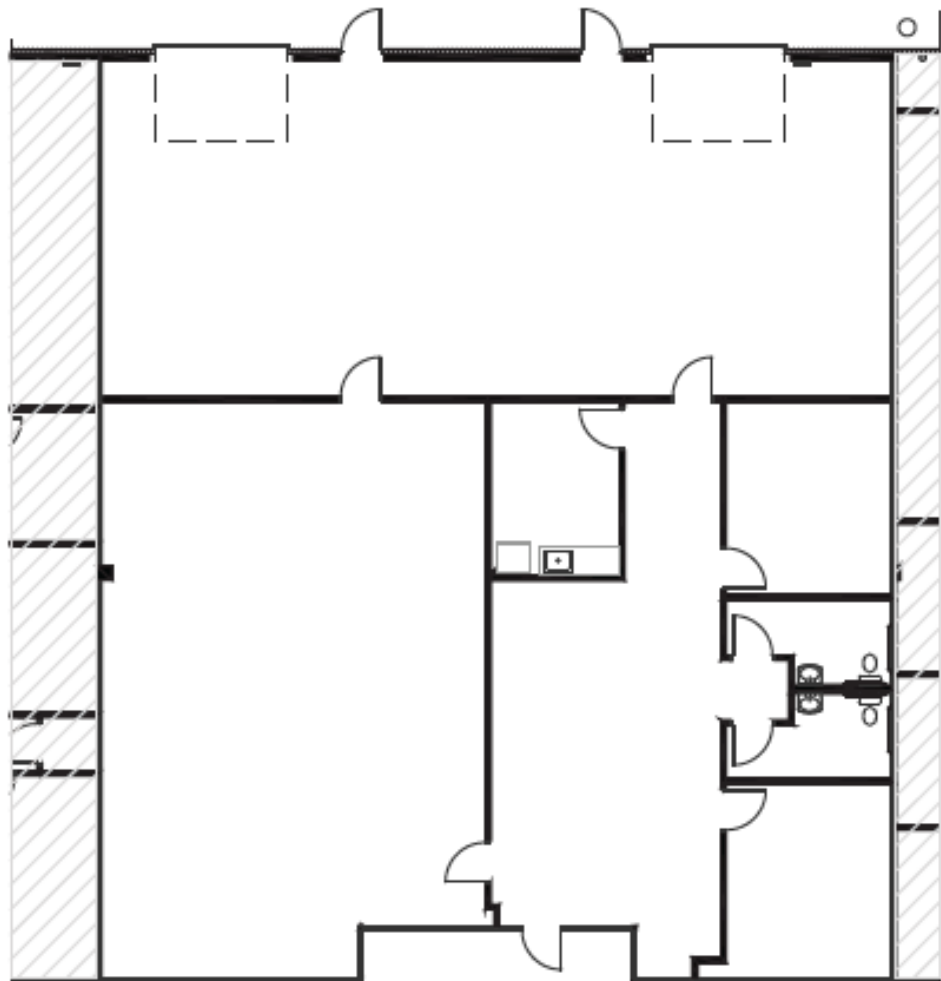
This information is deemed reliable, however Holt Lunsford Commercial makes no guarantees, warranties or representation as to the completeness or accuracy thereof.

# WESTWOOD BUSINESS PARK

1850-1890 CROWN DRIVE | DALLAS, TEXAS 75234

## SUITE 1112

- 4,486 SF Available
- 1,534 SF Office
- 12' Clear Height
- Two (2) Grade Level Doors



**JON SKIDMORE** | 214.442.8942 | [jskidmore@holtlunsford.com](mailto:jskidmore@holtlunsford.com)  
**LUKE FLOYD** | 972.585.5109 | [lfloyd@holtlunsford.com](mailto:lfloyd@holtlunsford.com)



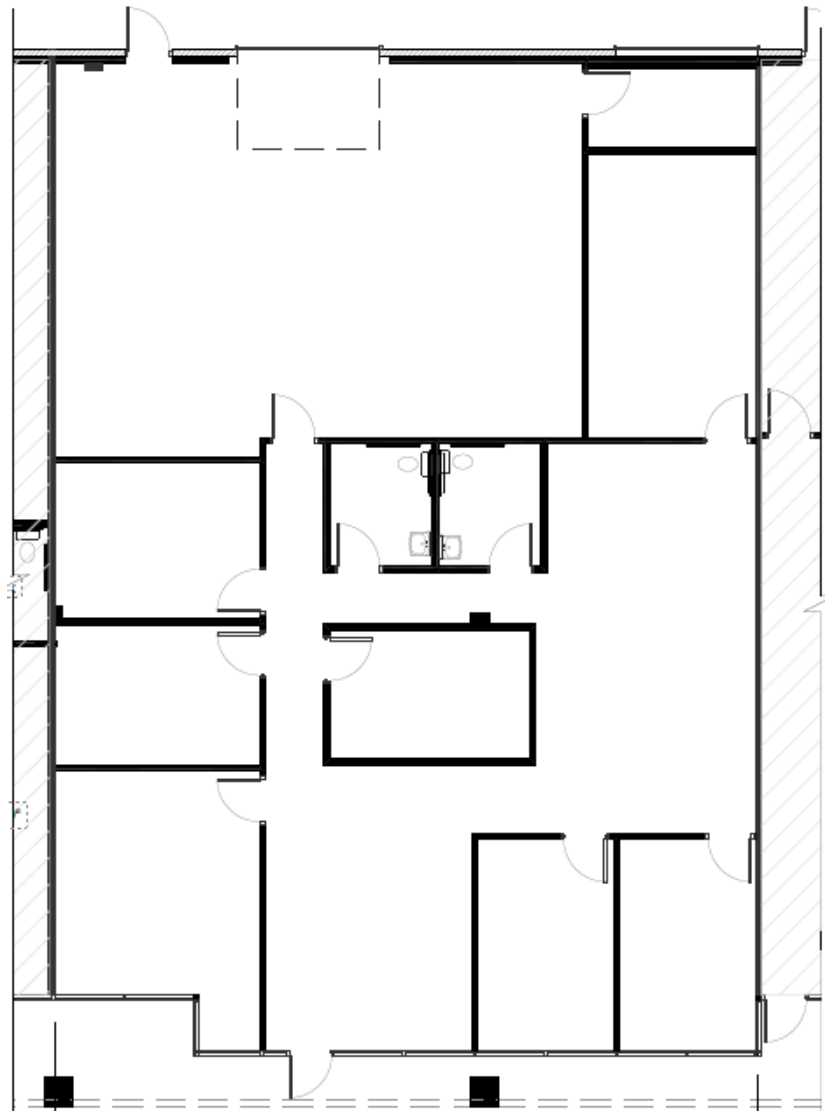
This information is deemed reliable, however Holt Lunsford Commercial makes no guarantees, warranties or representation as to the completeness or accuracy thereof.

# WESTWOOD BUSINESS PARK

1850-1890 CROWN DRIVE | DALLAS, TEXAS 75234

## SUITE 1103

- 3,717 SF Available
- 2,709 SF Office
- 12' Clear Height
- One (1) Grade Level Door



**JON SKIDMORE** | 214.442.8942 | [jskidmore@holtlunsford.com](mailto:jskidmore@holtlunsford.com)  
**LUKE FLOYD** | 972.585.5109 | [lfloyd@holtlunsford.com](mailto:lfloyd@holtlunsford.com)



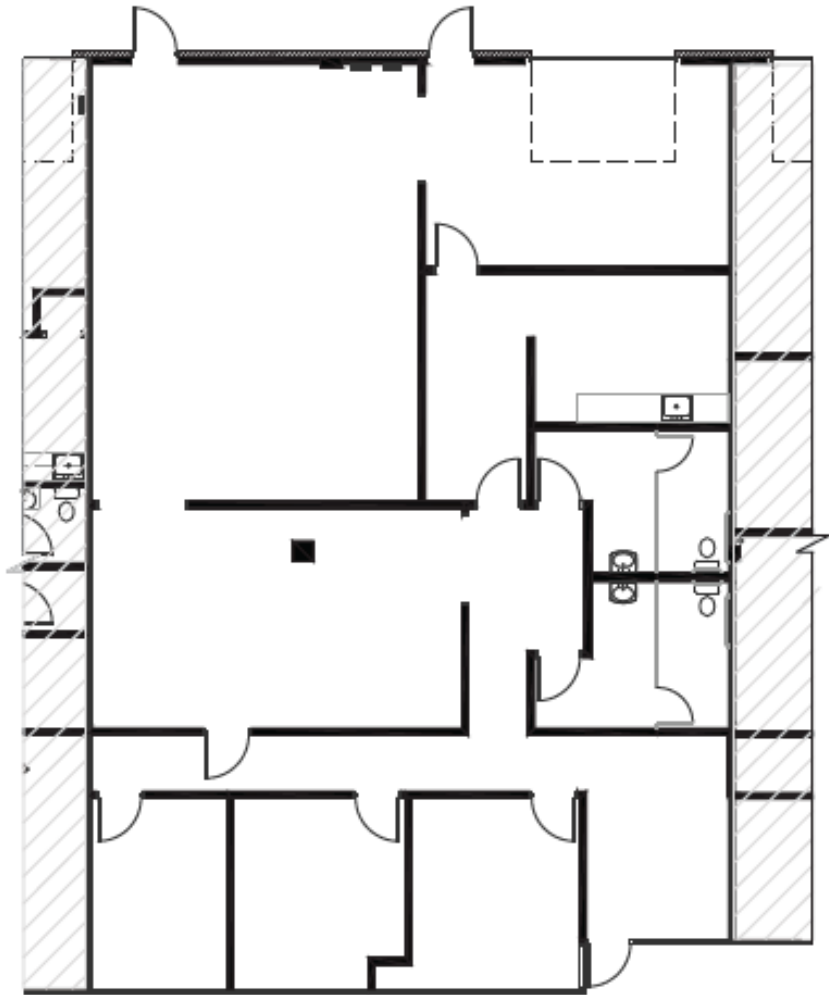
This information is deemed reliable, however Holt Lunsford Commercial makes no guarantees, warranties or representation as to the completeness or accuracy thereof.

# WESTWOOD BUSINESS PARK

1850-1890 CROWN DRIVE | DALLAS, TEXAS 75234

## SUITE 1406

- 3,158 SF Available
- 1,011 SF Office
- 12' Clear Height
- One (1) Grade Level Door



**JON SKIDMORE** | 214.442.8942 | [jskidmore@holtlunsford.com](mailto:jskidmore@holtlunsford.com)  
**LUKE FLOYD** | 972.585.5109 | [lfloyd@holtlunsford.com](mailto:lfloyd@holtlunsford.com)



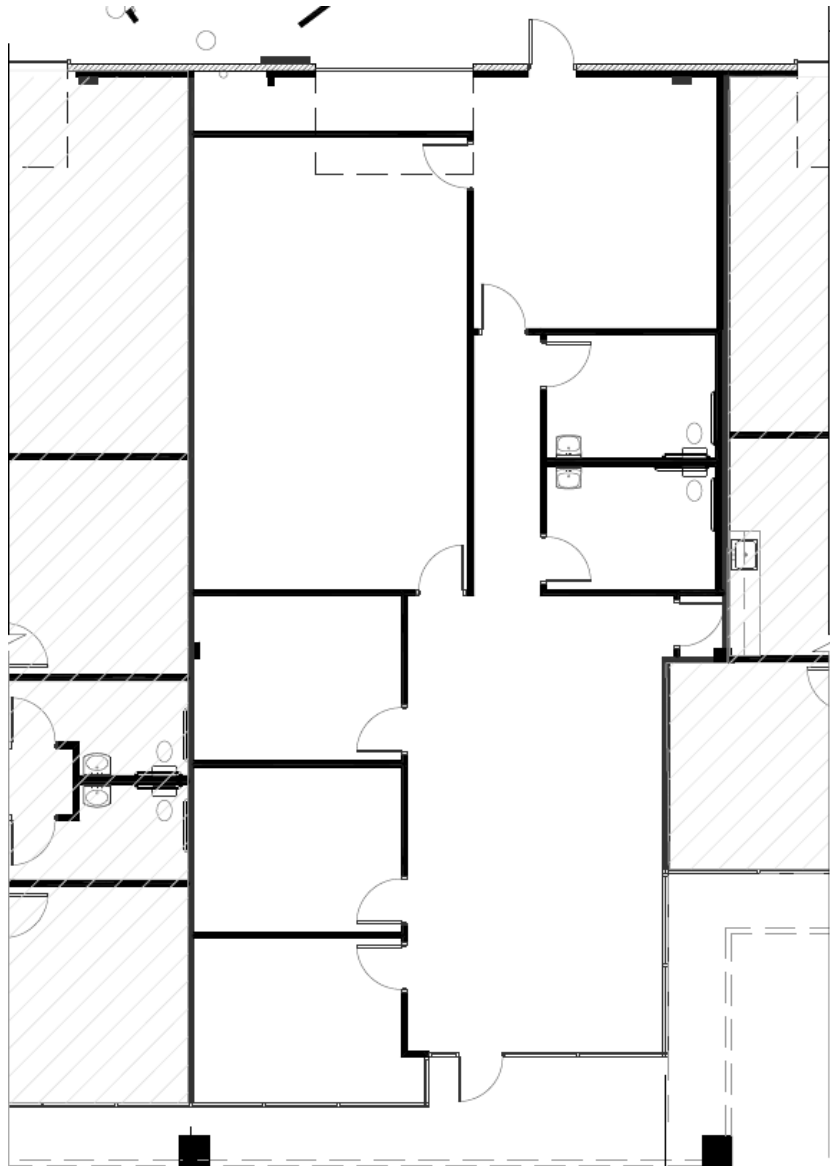
This information is deemed reliable, however Holt Lunsford Commercial makes no guarantees, warranties or representation as to the completeness or accuracy thereof.

# WESTWOOD BUSINESS PARK

1850-1890 CROWN DRIVE | DALLAS, TEXAS 75234

## SUITE 1111

- 2,560 SF Available
- 2,272 SF Office
- 12' Clear Height
- One (1) Grade Level Door



**JON SKIDMORE** | 214.442.8942 | [jskidmore@holtlunsford.com](mailto:jskidmore@holtlunsford.com)  
**LUKE FLOYD** | 972.585.5109 | [lfloyd@holtlunsford.com](mailto:lfloyd@holtlunsford.com)



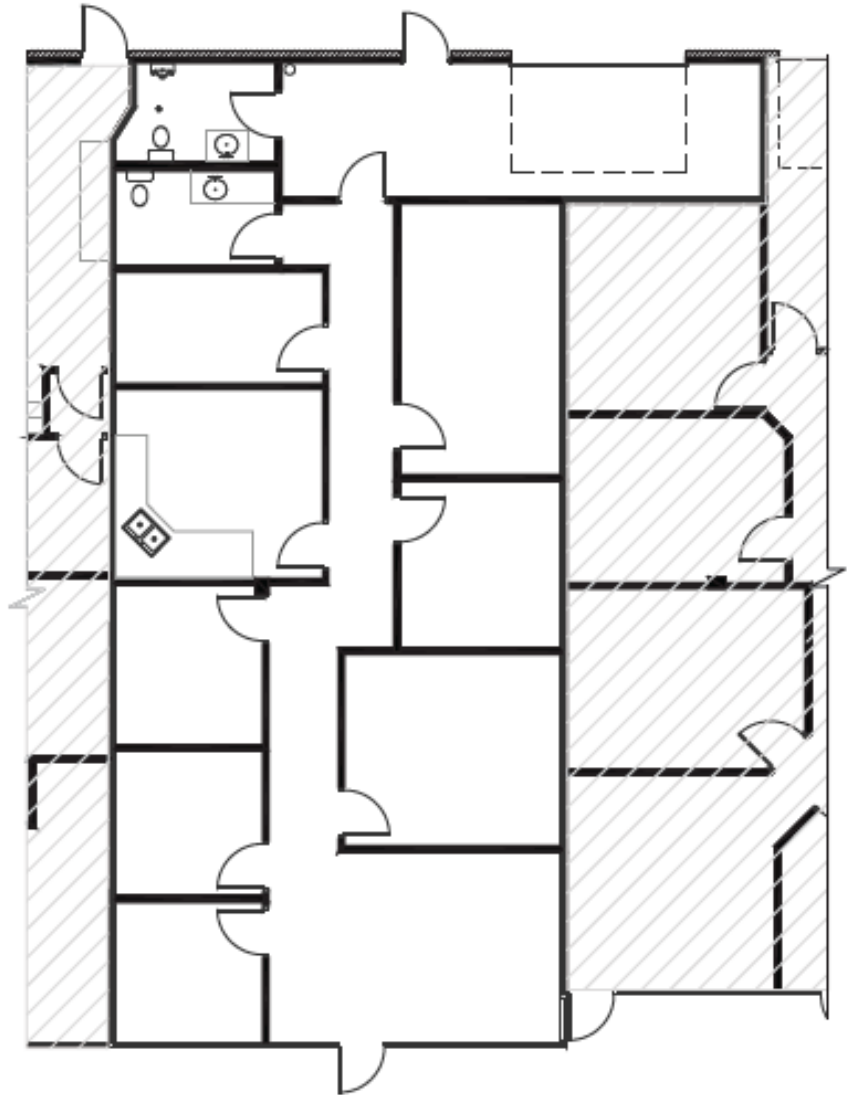
This information is deemed reliable, however Holt Lunsford Commercial makes no guarantees, warranties or representation as to the completeness or accuracy thereof.

# WESTWOOD BUSINESS PARK

1850-1890 CROWN DRIVE | DALLAS, TEXAS 75234

## SUITE 1403

- 2,223 SF Available
- 1,940 SF Office,
- 12' Clear Height
- One (1) Grade Level Door

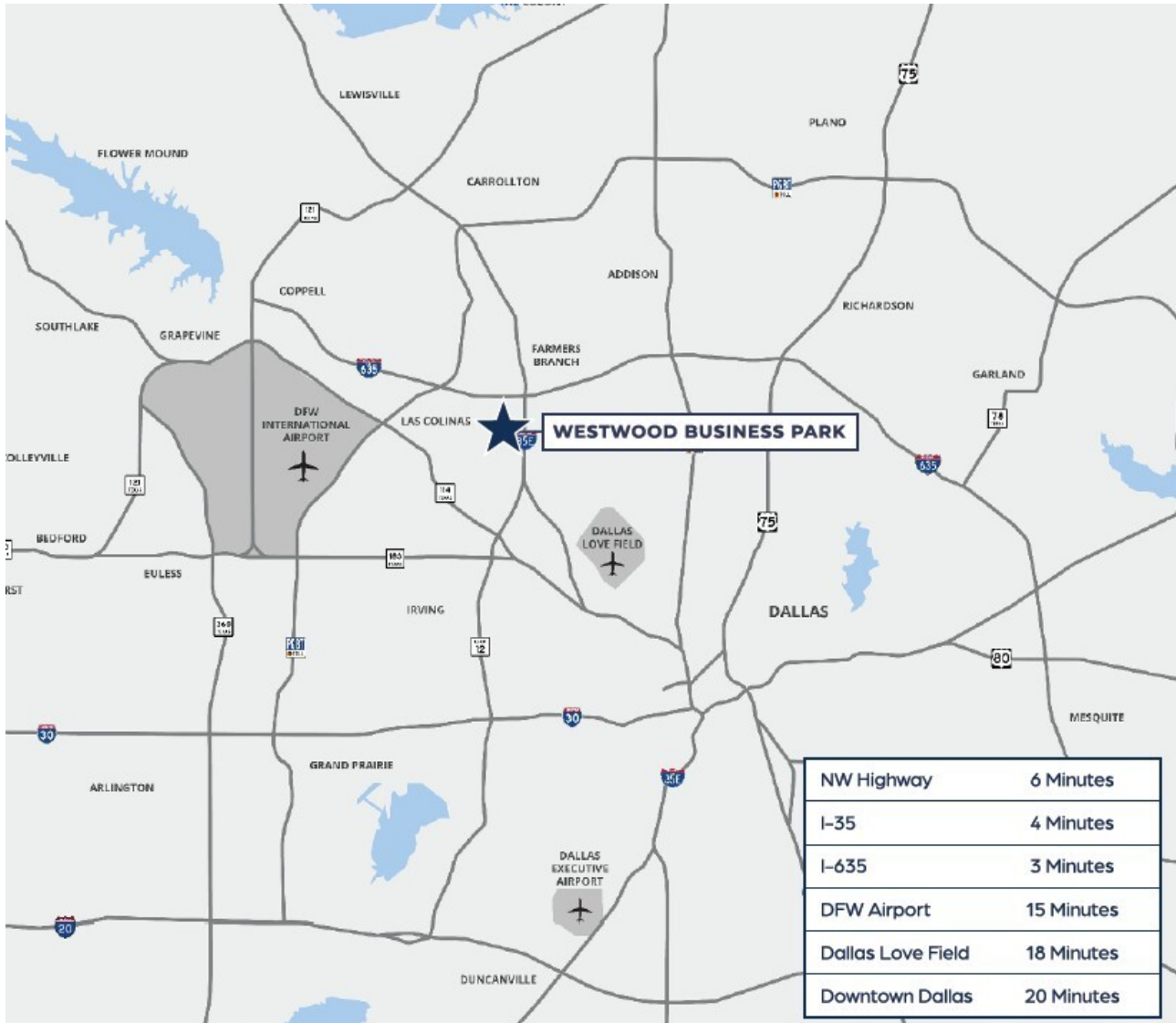


**JON SKIDMORE** | 214.442.8942 | [jskidmore@holtlunsford.com](mailto:jskidmore@holtlunsford.com)  
**LUKE FLOYD** | 972.585.5109 | [lfloyd@holtlunsford.com](mailto:lfloyd@holtlunsford.com)



# WESTWOOD BUSINESS PARK

1850-1890 CROWN DRIVE | DALLAS, TEXAS 75234



**JON SKIDMORE** | 214.442.8942 | [jskidmore@holtlunsford.com](mailto:jskidmore@holtlunsford.com)  
**LUKE FLOYD** | 972.585.5109 | [lfloyd@holtlunsford.com](mailto:lfloyd@holtlunsford.com)



This information is deemed reliable, however Holt Lunsford Commercial makes no guarantees, warranties or representation as to the completeness or accuracy thereof.

