

Now Available | 1,275 SF Retail Space | West Bloomfield

savills

FOR LEASE

6909 Orchard Lake Rd, West Bloomfield Township, MI 48322



SPACE PROFILE

1,275 SF
Available SF

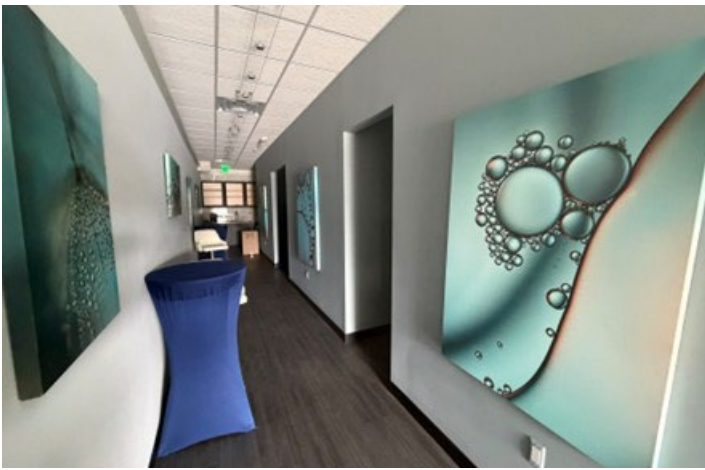
Retail
Use

40,500 SF
Center Size

263 Spaces
Parking

Orchard Lake
Frontage

22,000+ VPD
Traffic Counts



CO-TENANTS

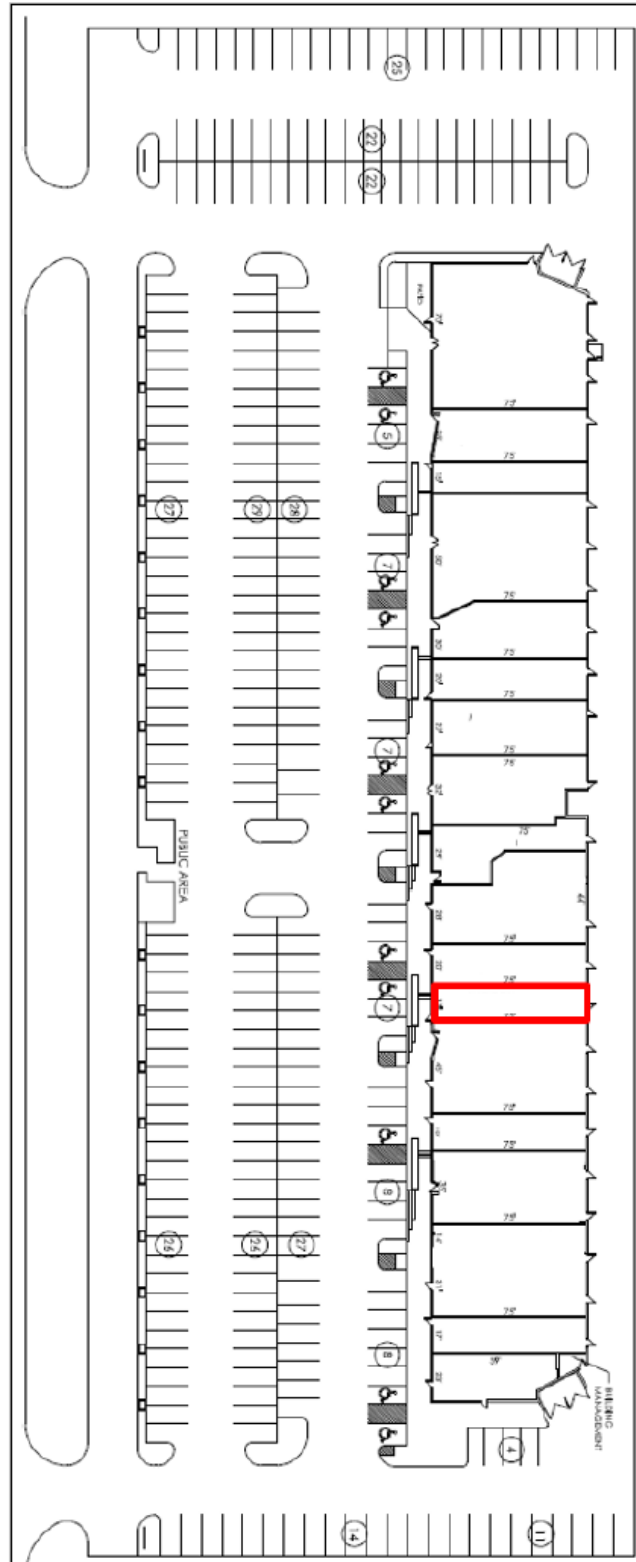
- Stage Deli
- Pure Barre
- The Lash Lounge
- Dairy Queen
- Chico's
- Additional national and local retailers

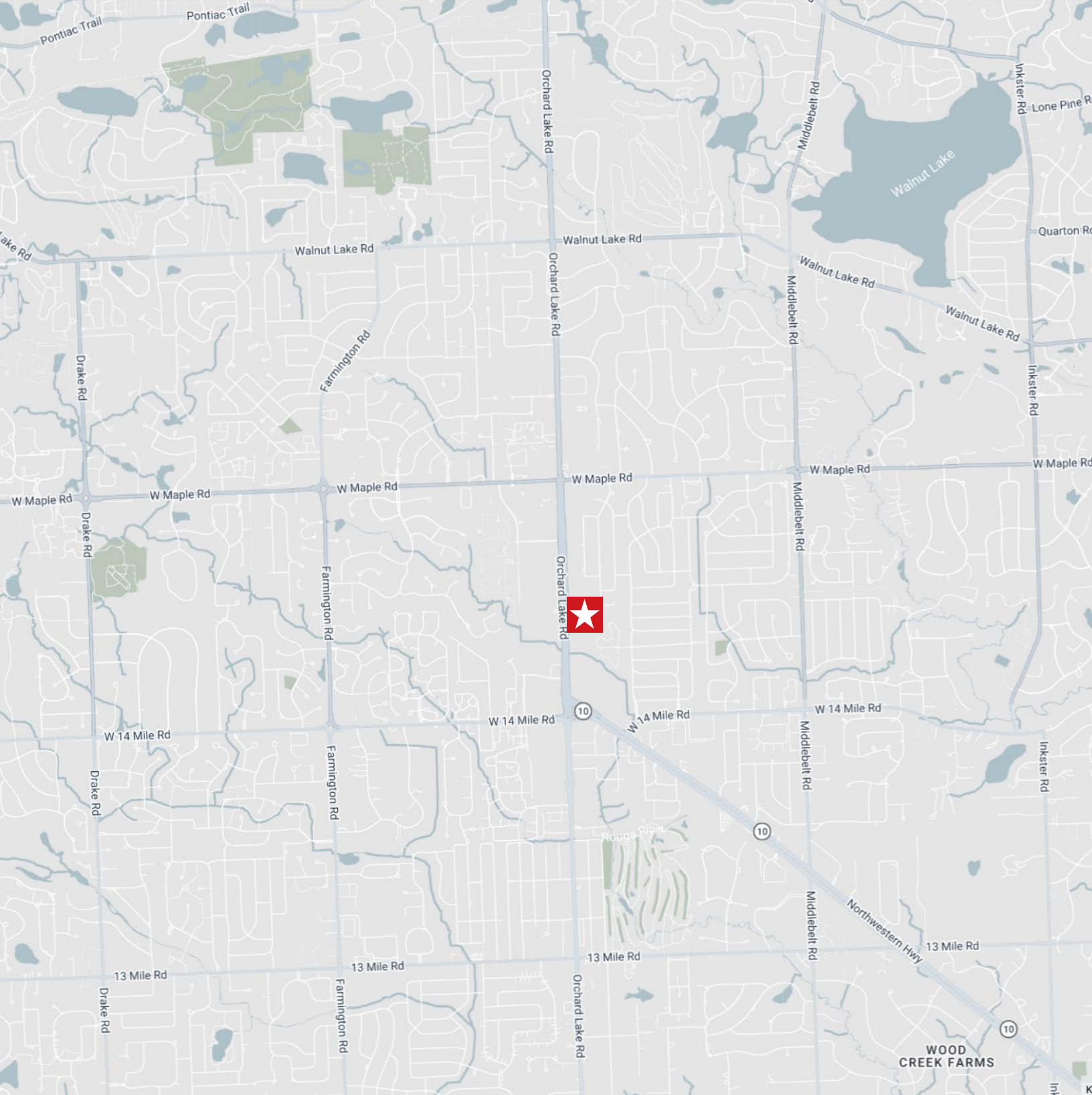
KEY HIGHLIGHTS

- Located within The Boardwalk Shopping Center, a premier neighborhood retail destination in West Bloomfield
- Positioned on highly trafficked Orchard Lake Road, between 14 Mile Road and Maple Road
- Excellent visibility and convenient access via multiple curb cuts and signalized entrances
- Affluent trade area with strong household incomes and purchasing power
- Established center serving West Bloomfield, Bloomfield Hills, Farmington Hills, and surrounding communities
- Attractive storefront presence with ample customer parking
- Ideal for retail, wellness, beauty, medical retail, boutique fitness, specialty services, or office/showroom users

SITE PLAN

1,275 SF





Daniel Jacob

+1 248 892 9000

djacob@savills.us

© 2024 Savills. All rights reserved. The information contained in this communication has been obtained from a variety of sources believed to be reliable but has not been verified. NO WARRANTY OR REPRESENTATION, EXPRESS OR IMPLIED, IS MADE AS TO THE CONDITION OF THE PROPERTY OR ACCURACY OR COMPLETENESS OF THE INFORMATION CONTAINED HEREIN AND SAME IS SUBMITTED SUBJECT TO ERRORS, OMISSIONS, CHANGE OF PRICE, RENTAL OR OTHER CONDITIONS, WITHDRAWAL WITHOUT NOTICE AND TO ANY SPECIFIC CONDITIONS IMPOSED BY THE PROPERTY OWNER OR LESSOR.