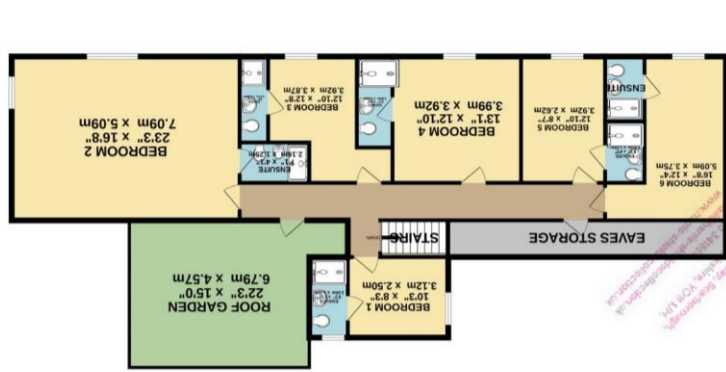
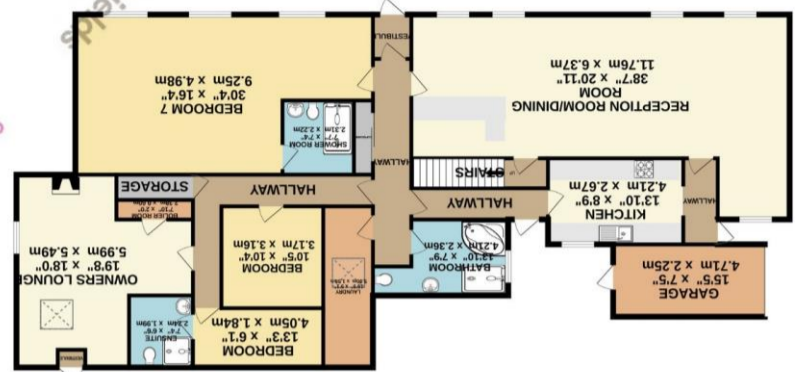


Whilst every attempt has been made to ensure the accuracy of the floorplan contained here, measurements of doors, windows, rooms and any other items are approximate and no responsibility is taken for any error, omission or mis-statement. This plan is for illustrative purposes only and should be used as such by any prospective purchaser. The services, systems and appliances shown have not been tested and no guarantee as to their operability or efficiency can be given.
 Made with Metropix ©2024



1ST FLOOR
 1477 sq. ft. (137.2 sq. m.) approx.



GROUND FLOOR
 2358 sq. ft. (219.1 sq. m.) approx.



The Southgate Bed and Breakfast, Filey, North Yorkshire, YO14 0JR

Harris Shields Collection

A seven bedroom with en-suite gorgeous guest house.

- ✓ 7 en suite bedroom guesthouse
- ✓ Central to Hunmanby village
- ✓ Substantial 2 bedroom owners accommodation
- ✓ Alcohol Licence & Tearoom permission granted
- ✓ Multi award winning business
- ✓ TripAdvisor/Booking.com.
- ✓ Excellent First Class Condition

Asking Price £650,000

Harris Shields Collection

Harris Shields Collection, 25 Northway, Scarborough
North Yorkshire, YO11 1JH

01723 341557

mail@harris-shieldscollection.uk

<https://harris-shieldscollection.uk/>

Description

Formerly known as The Buck Inn public house, it was converted in 2011 to become the Southgate B&B, our clients purchased the property in 2018 and have taken the business from strength to strength. Owner operated and trading to a high level, The Southgate B&B is now multi award winning : • 5 star award on Tripadvisor and have year on year received the Tripadvisor Travellers Choice award • Extremely high score of 9.8 with Booking.com which is one of the highest scores in the country • Recognition of Excellence award from HotelsCombined • LUXLife Resort and Retreat awarded the Best Historic Village Pub & Hotel - North Yorkshire.

The Southgate B&B is ideally situated in the centre of Hunmanby Village on Bridlington Street. Hunmanby was once known as the largest village in the UK, consistently experiencing high tourism to the North Yorkshire coast. Located close to the seaside resort of Filey, with both Scarborough and Bridlington within easy reach and Whitby a little further along the coast. The business location benefits from North Yorkshires most stunning scenery with walking and cycle routes on the doorstep.

Additional Information

Council tax band



Opening doors
for over 60 years

Harris Shields
Collection