



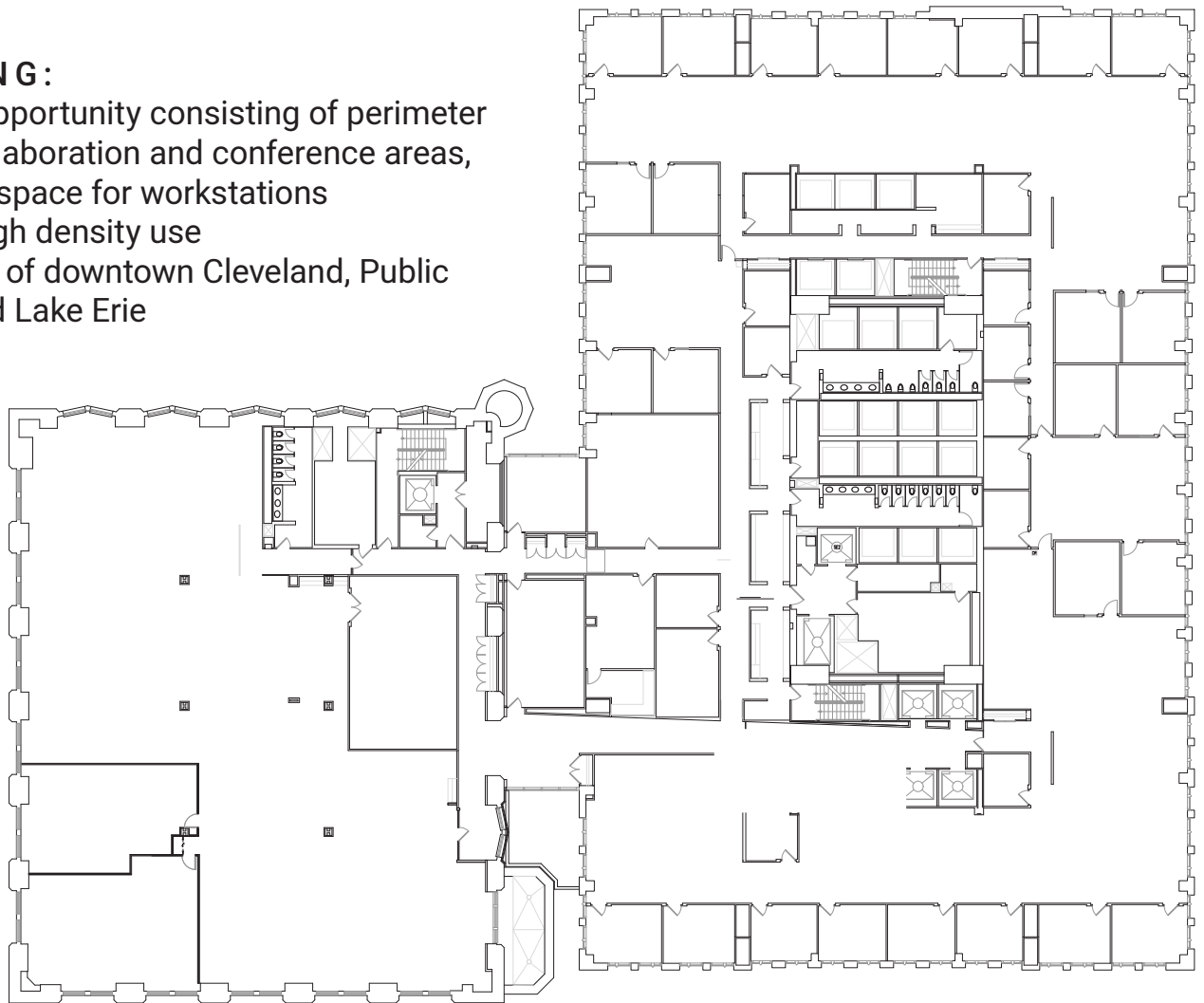
# KEY TOWER

127 PUBLIC SQUARE, CLEVELAND, OH

## SUITE 400 43,398 SF

### FEATURING:

- Full floor opportunity consisting of perimeter offices, collaboration and conference areas, and ample space for workstations
- Ideal for high density use
- 360\* views of downtown Cleveland, Public Square, and Lake Erie



### Exclusive Broker: JLL, Inc.

**KRISTY (HULL) PETERS**  
Senior Vice President  
(440) 226-1550  
kristy.hull@jll.com

**HEATHER GILLELAND**  
Vice President  
(330) 316-4164  
heather.gilleland@jll.com



Although information has been obtained from sources deemed reliable, neither Owner nor JLL makes any guarantees, warranties or representations, express or implied, as to the completeness or accuracy as to the information contained herein. Any projections, opinions, assumptions or estimates used are for example only. There may be differences between projected and actual results, and those differences may be material. The Property may be withdrawn without notice. Neither Owner nor JLL accepts any liability for any loss or damage suffered by any party resulting from reliance on this information. If the recipient of this information has signed a confidentiality agreement regarding this matter, this information is subject to the terms of that agreement.