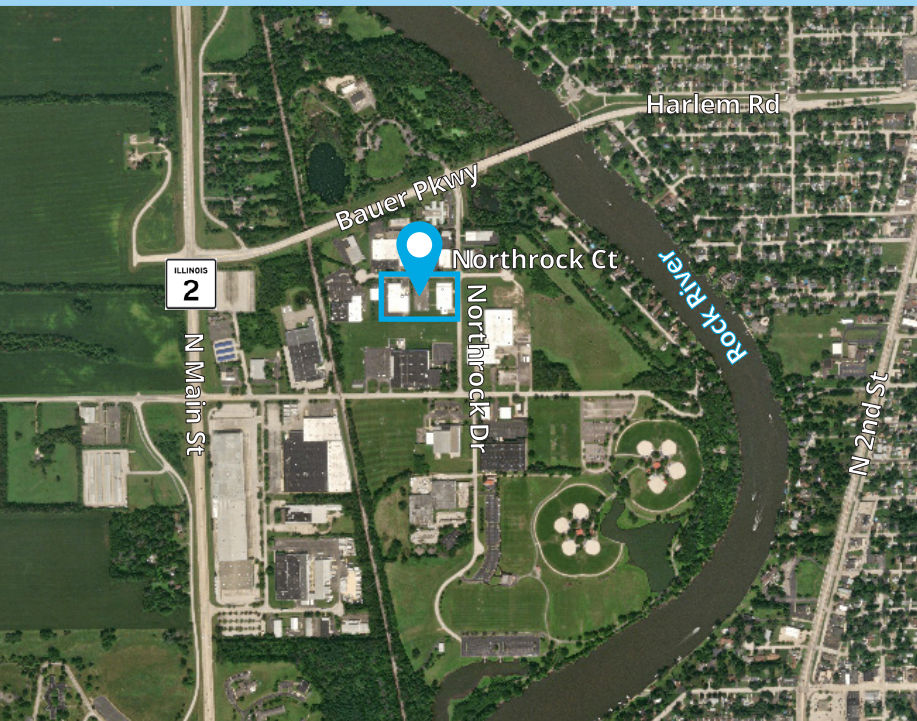




121,503 SF Industrial Sublease

1670 Northrock Court, Rockford, IL



Features

- Available Size: 121,503 SF (Divisible to 37,807 SF)
- Total Building: 121,503 SF
- Office Size: ±15,000 SF (Divisible)
- Clear Height: 12' - 18'
- Year Built: 1974, expanded 2023
- Exterior docks: 15
- Drive-in door: 3
- Car Parking: 100
- Power: 1600 amps
- Zoning: Industrial
- Lease Rate: Subject to offer
- Real Estate Taxes: \$0.93 PSF (2024)
- Operating Taxes: \$0.68 PSF (2024)
- Newly renovated and expanded building
- Flexible lease term

Contact

Suzanne Serino, SIOR

Vice Chair
+1 847 942 5144
suzanne.serino@colliers.com

Kelly Joyce, CCIM

Vice President
+1 847 910 2641
Kelly.Joyce@colliers.com

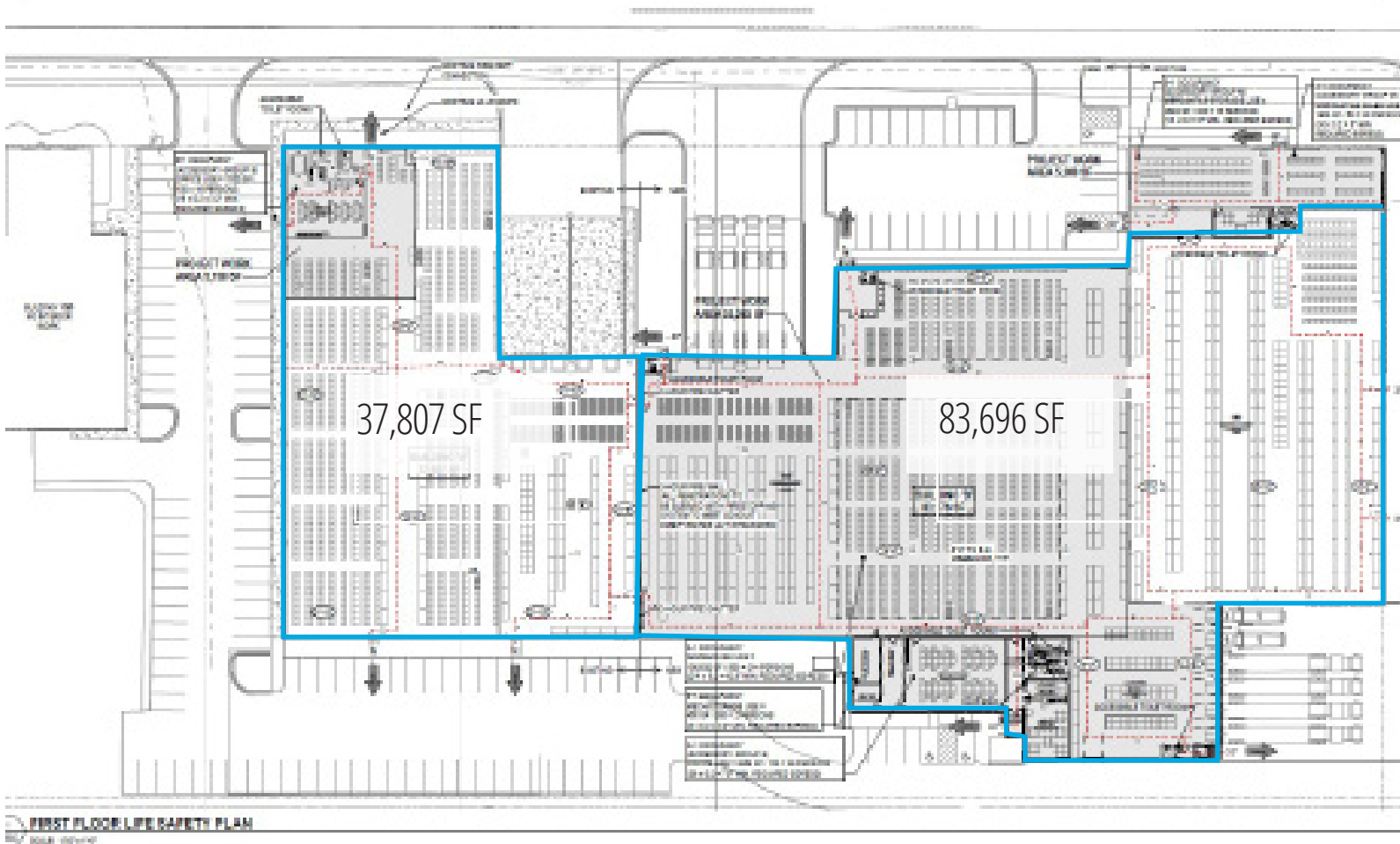


Accelerating success.

121,503 SF Industrial Sublease

Divisible to 37,807 SF

Site Plan



6250 North River Road
Suite 11-100
Rosemont, IL 60018

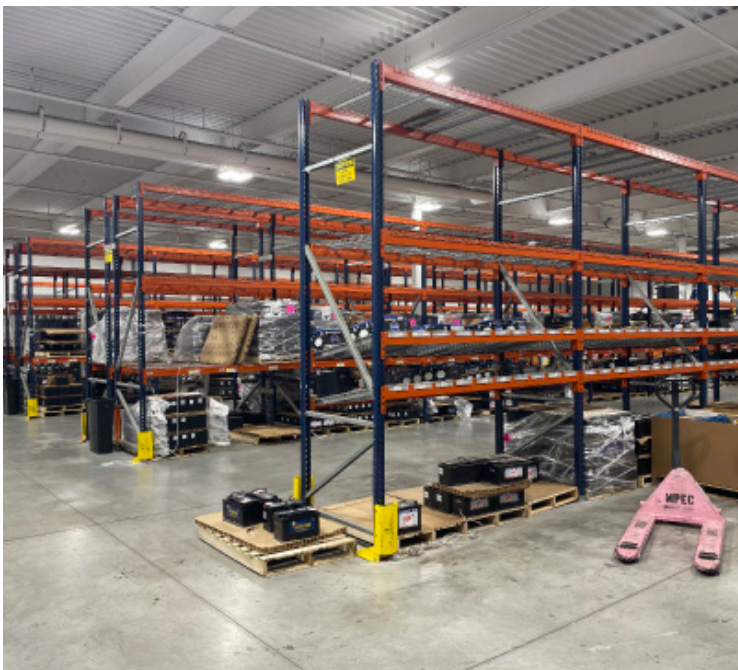
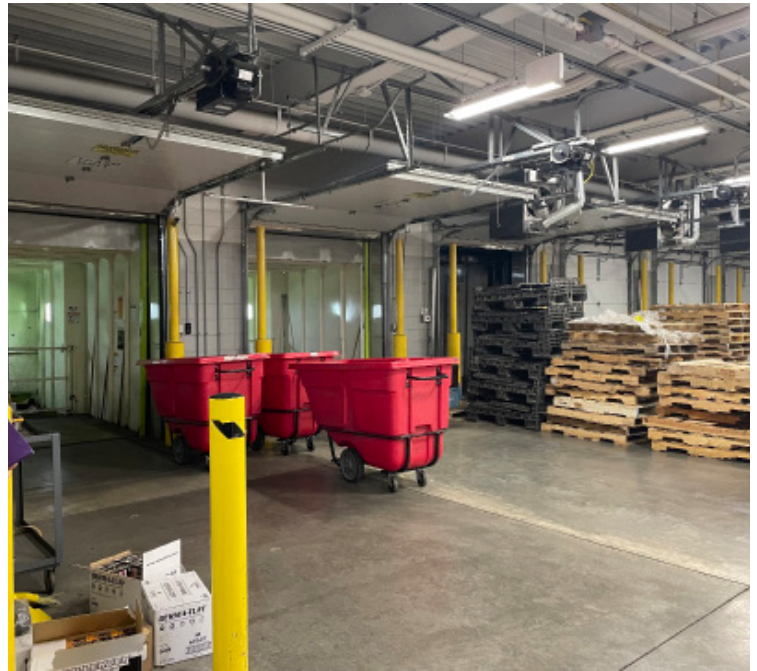
Suzanne Serino, SIOR
Vice Chair
+1 847 942 5144
suzanne.serino@colliers.com

Kelly Joyce, CCIM
Vice President
+1 847 910 2641
Kelly.Joyce@colliers.com

121,503 SF Industrial Sublease

1670 Northrock Court, Rockford, IL

Photos



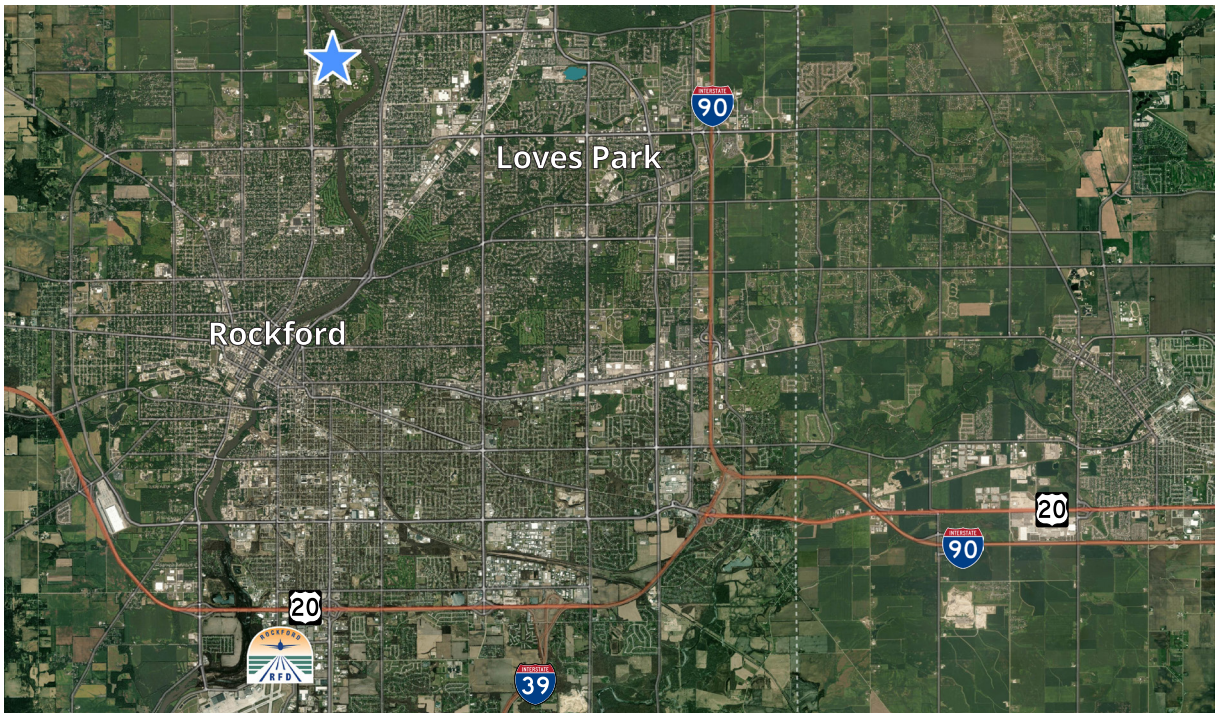
6250 North River Road
Suite 11-100
Rosemont, IL 60018

Suzanne Serino, SIOR
Vice Chair
+1 847 942 5144
suzanne.serino@colliers.com

Kelly Joyce, CCIM
Vice President
+1 847 910 2641
Kelly.Joyce@colliers.com

121,503 SF Industrial Sublease

1670 Northrock Court, Rockford, IL



6250 North River Road
Suite 11-100
Rosemont, IL 60018

Suzanne Serino, SIOR
Vice Chair
+1 847 942 5144
suzanne.serino@colliers.com

Kelly Joyce, CCIM
Vice President
+1 847 910 2641
kelly.joyce@colliers.com