

# 316

NORTH  
MICHIGAN  
AVENUE

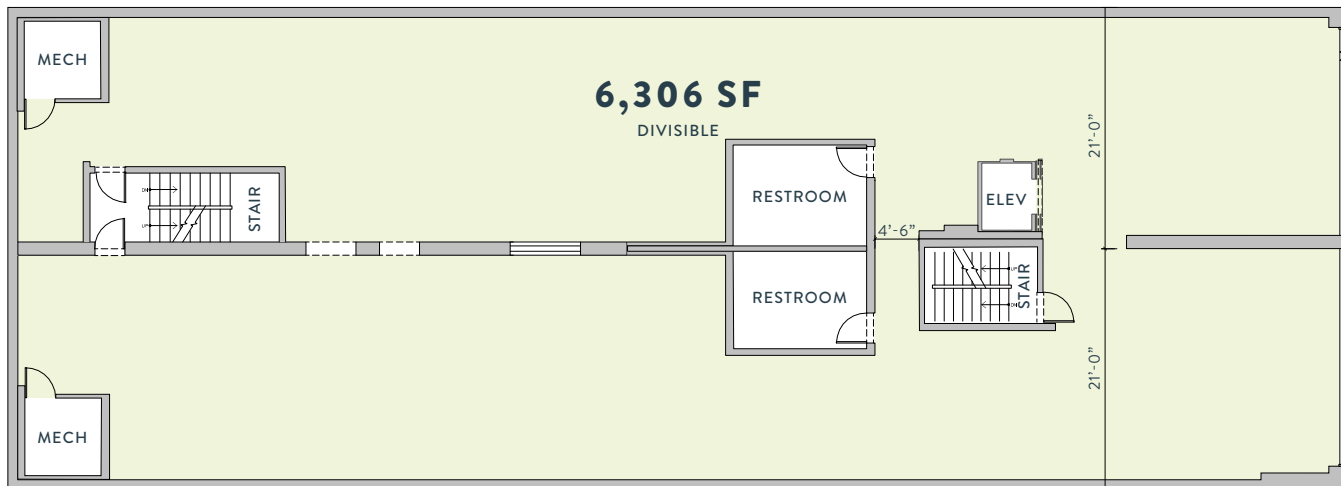
---

CBRE



# FLOOR PLANS

**SECOND** 6,306 SF



N. MICHIGAN AVENUE

## PROPERTY HIGHLIGHTS

6,306 SF (DIVISIBLE) AVAILABLE ON THE SECOND FLOOR WITH DIRECT ELEVATOR ACCESS FROM MICHIGAN AVENUE

ABILITY TO INSTALL BLACK IRON VENTING

INCREDIBLE CEILING HEIGHTS OF 11 FT

316  
NORTH  
MICHIGAN  
AVENUE

# 316

# NORTH MICHIGAN AVENUE

**+120 K**  
WEEKLY  
PEDESTRIANS

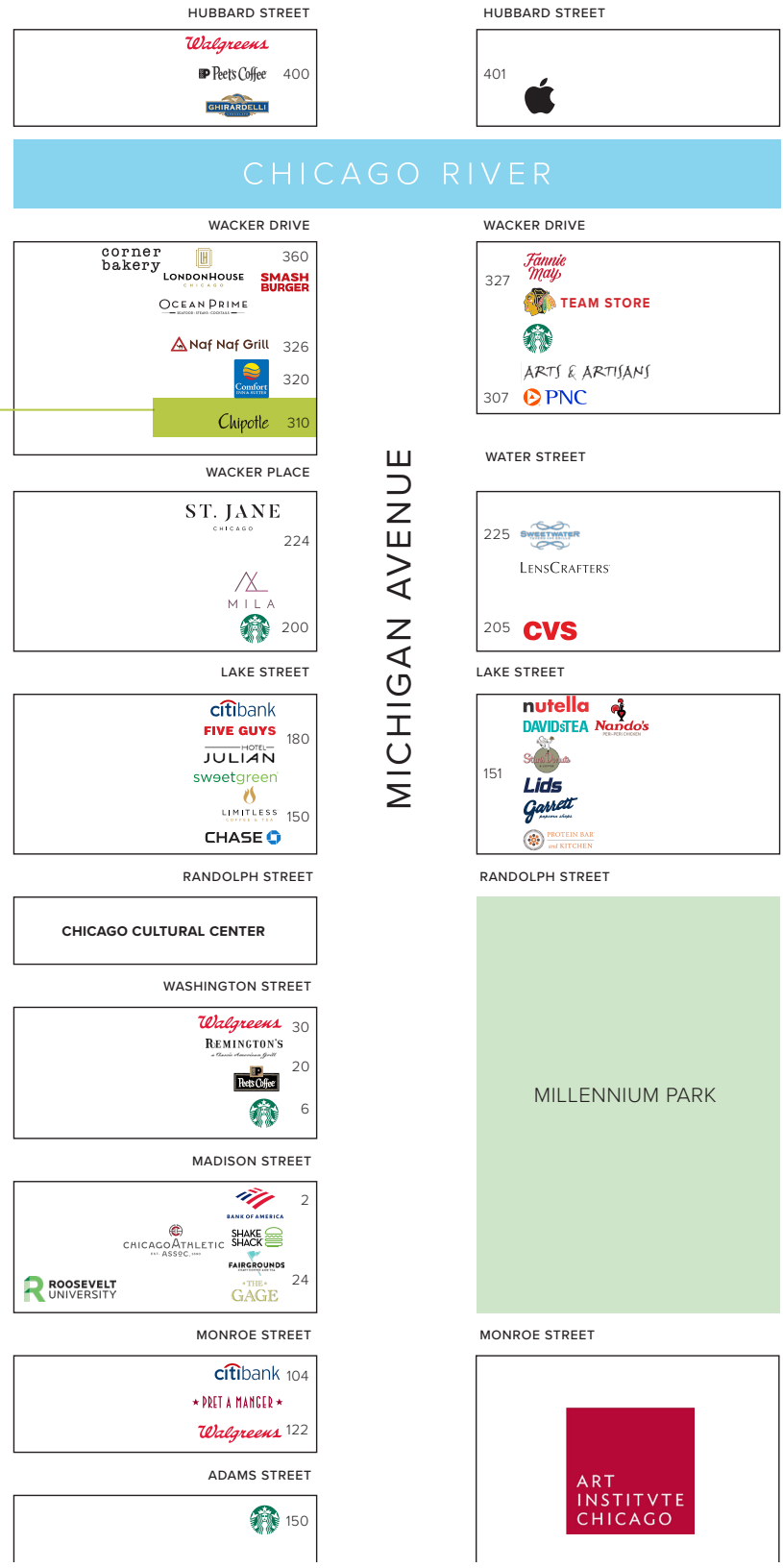
**+11.9K**  
HOTEL KEYS  
WITHIN 1/2 MILE

**+200K**  
EMPLOYEES  
WITHIN 1/2 MILE

**+500K**  
LOOP DAYTIME  
POPULATION

MILLENNIUM  
PARK  
**+24M**  
VISITORS

THE ART  
INSTITUTE  
**+1.8M**  
VISITORS



MICHIGAN AVENUE

## AREA HIGHLIGHTS

CENTRALLY  
LOCATED BETWEEN  
THE MAGNIFICENT  
MILE & CHICAGO'S  
TOP TOURIST  
DESTINATION  
MILLENNIUM PARK

SURROUNDED BY  
AN UNBEATABLE  
COMBINATION  
OF OFFICE,  
RESIDENTIAL,  
HOSPITALITY &  
UNIVERSITIES

AREA DESTINATIONS  
INCLUDE: THE APPLE  
FLAGSHIP STORE,  
SWEETGREEN,  
NUTELLA CAFÉ,  
NANDO'S, OCEAN  
PRIME, THE ART  
INSTITUTE, MAGGIE  
DALEY PARK,  
HOTEL JULIAN, ST.  
JANE HOTEL & THE  
LONDON HOUSE  
HOTEL





# 316

NORTH  
MICHIGAN  
AVENUE

LEASING INQUIRIES

**LUKE  
MOLLOY**

312.935.1905

LUKE.MOLLOY@CBRE.COM

**STEPHEN  
ANSANI**

312.935.1907

STEPHEN.ANSANI@CBRE.COM

© 2024 CBRE, Inc. This information has been obtained from sources believed reliable. We have not verified it and make no guarantee, warranty or representation about it. Any projections, opinions, assumptions or estimates used are for example only and do not represent the current or future performance of the property. You and your advisors should conduct a careful, independent investigation of the property to determine to your satisfaction the suitability of the property for your needs. Photos herein are the property of their respective owners and use of these images without the express written consent of the owner is prohibited. CBRE and the CBRE logo are service marks of CBRE, Inc. and/or its affiliated or related companies in the United States and other countries. All other marks displayed on this document are the property of their respective owners.

**CBRE**