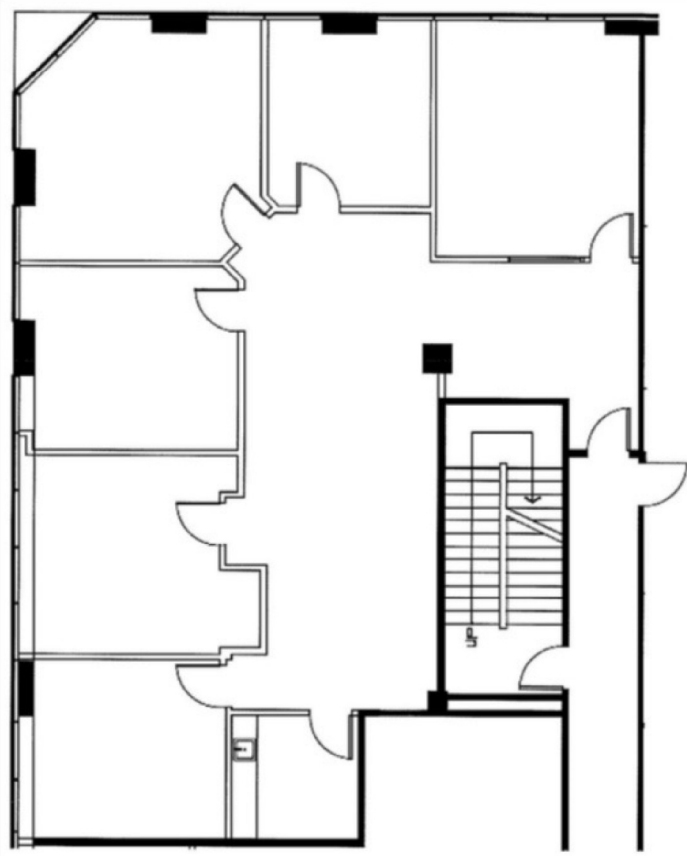


EXHIBIT 'A'

10805 Holder Street Suite 225 Suit...

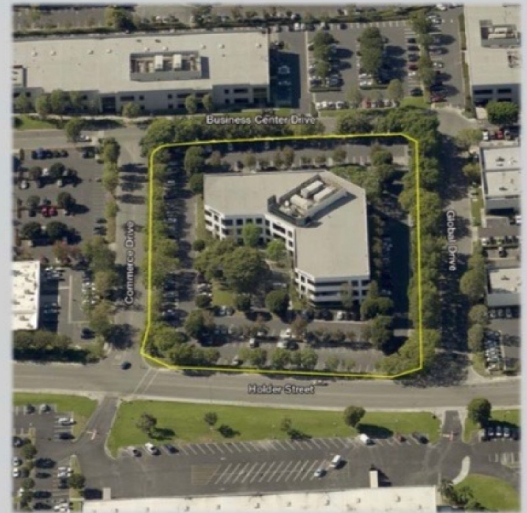


Done



Cypress Corporate Plaza
10805 Holder Street
Cypress, CA 90630

Suite 220
2,347 Rentable Square Feet



NAICapital
Commercial Real Estate Services, Worldwide.

Steve Ehrich
Senior Vice President
949.468.2328 Direct
sehrich@naicapital.com
BRE Lic #01092019

John Bosko
Senior Vice President
949.468.2323 Direct
johnbosko@naicapital.com
BRE Lic #00969975

1920 Main Street, Suite 100
Irvine, CA 92614
Tel 949.854.6600
Fax 949.854.7378
www.naicapital.com

No warranty, express or implied, is made as to the accuracy of the information contained herein. This information is submitted subject to errors, omissions, change of price, rental or other conditions, withdrawal without notice, and is subject to any special listing conditions imposed by our principals. Cooperating brokers, buyers, tenants and other parties who receive this document should not rely on it, but should use it as a starting point of analysis, and should independently confirm the accuracy of the information contained herein through a due diligence review of the books, records, files and documents that constitute reliable sources of the information described herein.