
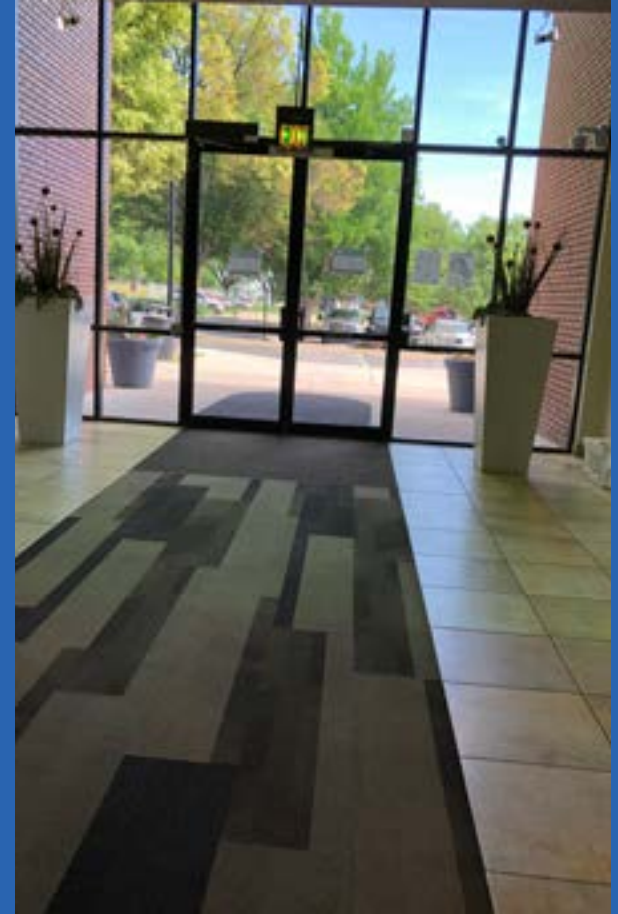
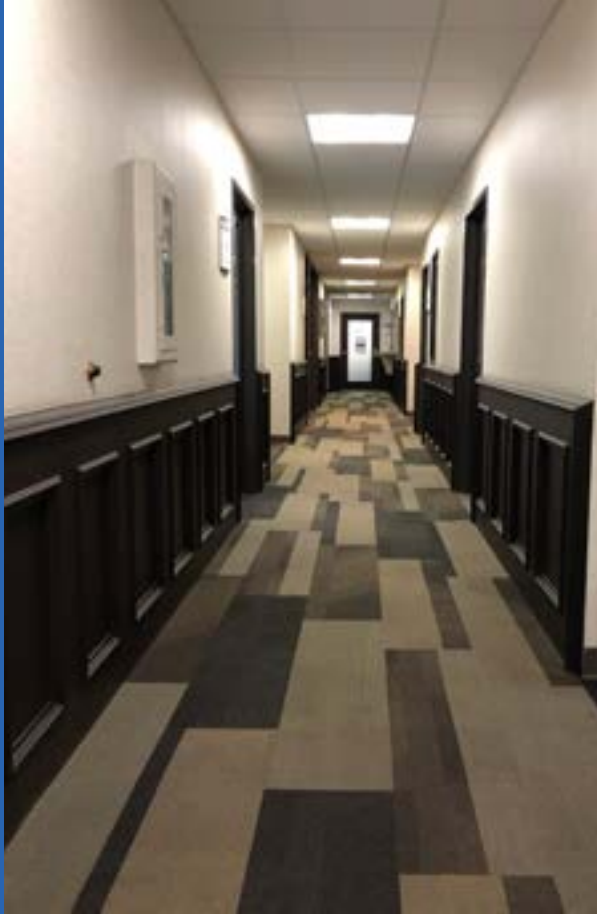




2850 MCCLELLAND  
DRIVE  
FORT COLLINS, CO 80525

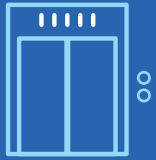
EXECUTIVE SUITES

Visit Our Website 



Conveniently Located Near the Newly Renovated  
Foothills Mall with Access to the Mason Corridor  
Max Transit System

# Building Features



Elevator



Ample Parking



In-Suite Janitorial  
Once per Week



A Variety of  
Floor Plans



Competitive  
Lease Rates



EnergyStar  
Certified



Upgraded  
Landscaping



Upgraded  
Signage



Upgraded  
Common Areas &  
Restrooms



Building Security  
System



100% Intelligent  
LED Lighting



High Speed  
Internet to the  
Building\*

\*Comcast, Century Link and Connexion Fiber

# Executive Office Features



One Year Leases  
Available  
with Incentives for  
Longer Terms



Shared  
Conference Room



Shared Break Area  
Including →



Refrigerator



Dishwasher



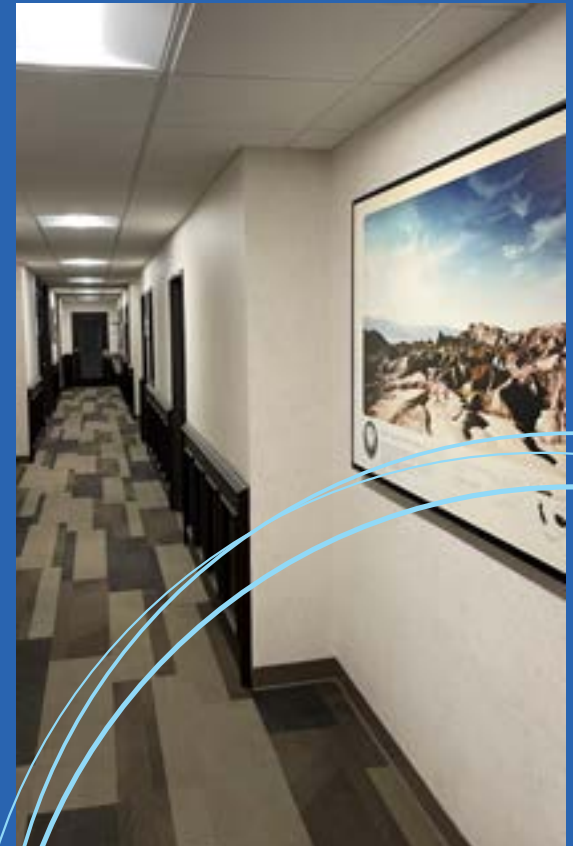
Microwave



Sink

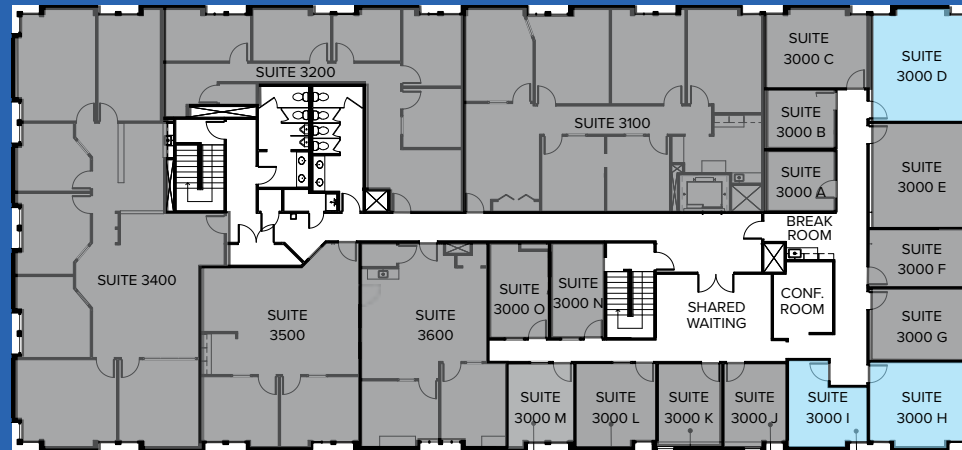


# Find the Way to Your Space with the Help of Colorado-Themed Artwork Lining the Halls of Each Floor



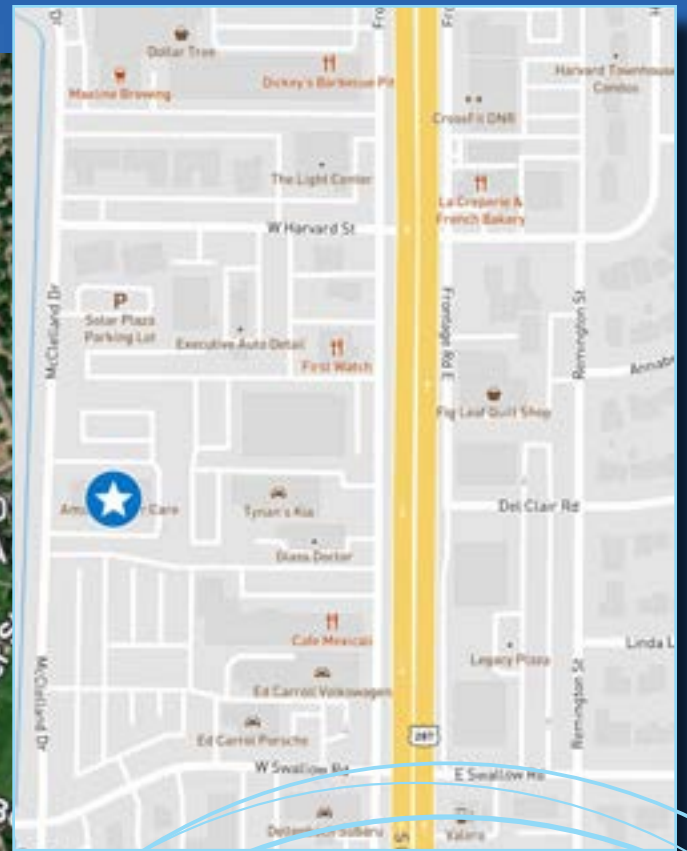
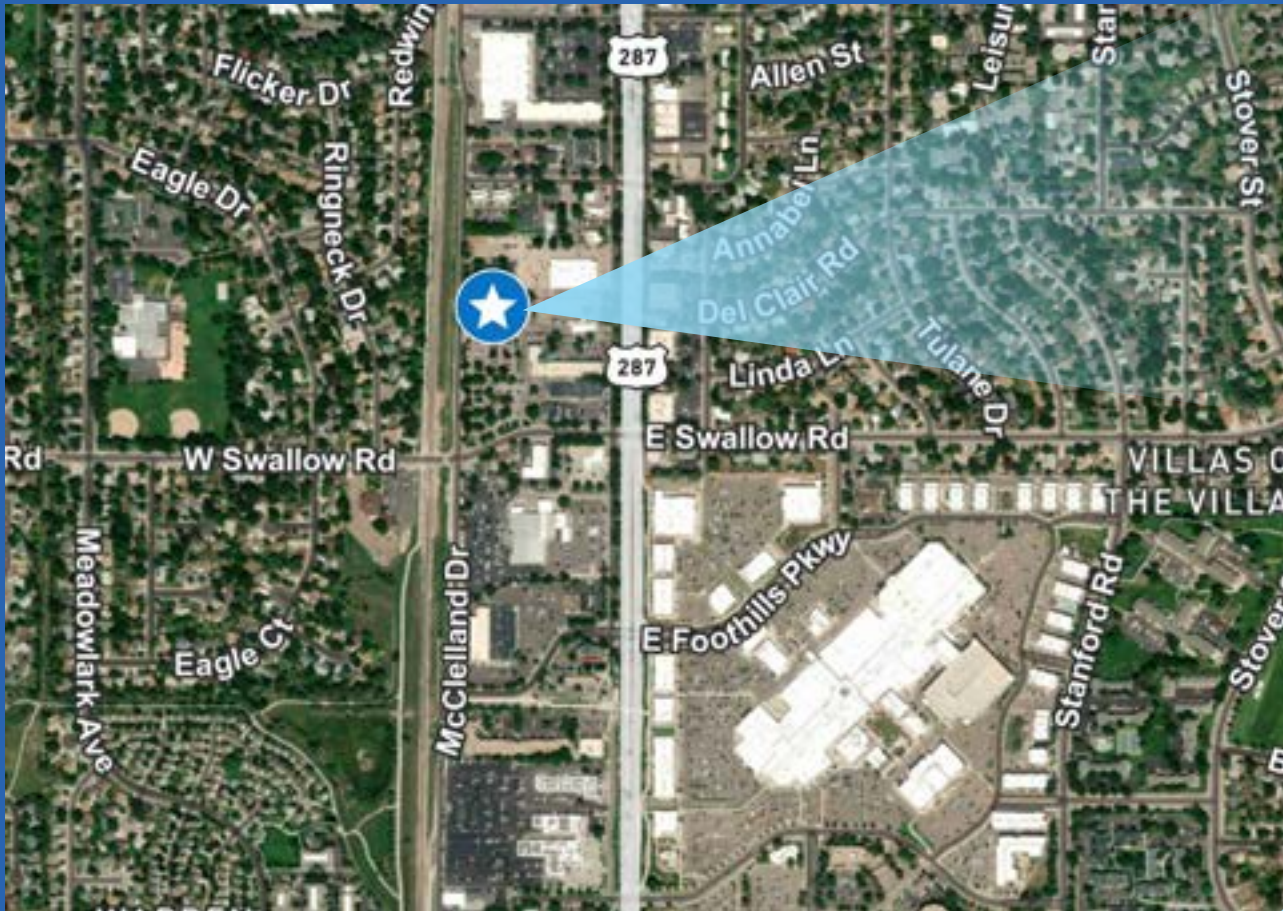
# Floor Plan & Availability

## 3rd Floor



Suite	Floor	RSF	Rate	Lease	NNN	Date Available
3000D	3	492	\$1,222/MO	FSG	N/A	Now
3000 H	3	372	\$924/MO	FSG	N/A	Now
3000 I	3	252	\$626/MO	FSG	N/A	Now

Rent abatement for longer terms.



## Contact Us

**Steve Stoecker**  
Senior Associate  
+1 970 372 3859  
steve.stoecker@cbre.com

**Annah Moore, CCIM**  
Vice President  
+1 970 227 0035  
annah.moore@cbre.com

© 2025 CBRE, Inc. All rights reserved. This information has been obtained from sources believed reliable, but has not been verified for accuracy or completeness. You should conduct a careful, independent investigation of the property and verify all information. Any reliance on this information is solely at your own risk. CBRE and the CBRE logo are service marks of CBRE, Inc. All other marks displayed on this document are the property of their respective owners, and the use of such logos does not imply any affiliation with or endorsement of CBRE. Photos herein are the property of their respective owners. Use of these images without the express written consent of the owner is prohibited.