

**FOR
LEASE**



**CUSHMAN &
WAKEFIELD**

**COMMERCIAL
OKLAHOMA**

**OFFICE SPACE
AVAILABLE**

**THE PIONEER
BUILDING**

103 DEAN A MCGEE AVE
OKLAHOMA CITY, OK

± 19,825 SF



OFFICE SPACE AVAILABLE THE PIONEER BUILDING

103 DEAN A MCGEE AVE
OKLAHOMA CITY, OK

The **Pioneer Building** is located in the CBD on the northwest corner of Dean A McGee and Broadway Avenue. The historic building was built in 1907 and underwent renovations in 2019 providing an excellent office and retail space for a multi-use of tenants to the Oklahoma City Market.

PROPERTY DETAILS

Building Size: ± 44,372 SF

AVAILABLE SPACE ± 19,825SF

2nd Floor: ± 5,975 SF

3rd Floor: ± 5,975 SF

4th Floor: ± 5,975 SF

5th Floor: ± 1,900 SF

Year Built: 1907 | 2019

Stories: 7

LEASE RATE: \$20.00 MG

 CUSHMAN & WAKEFIELD | COMMERCIAL OKLAHOMA

FOR LEASE



THE PIONEER BUILDING

103 DEAN A MCGEE AVE
OKLAHOMA CITY, OK

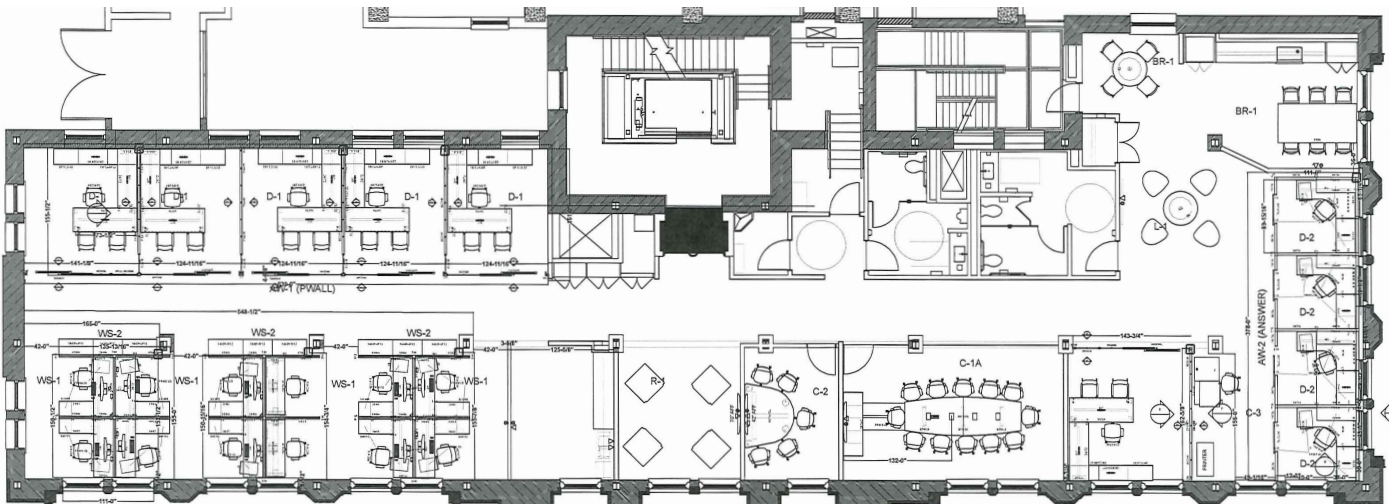
± 19,825 SF AVAILABLE

FOR LEASE



PROPERTY FLOORPLANS

2ND FLOOR | ± 5,975 SF FLOORPLAN



THE PIONEER BUILDING

103 DEAN A MCGEE AVE
OKLAHOMA CITY, OK

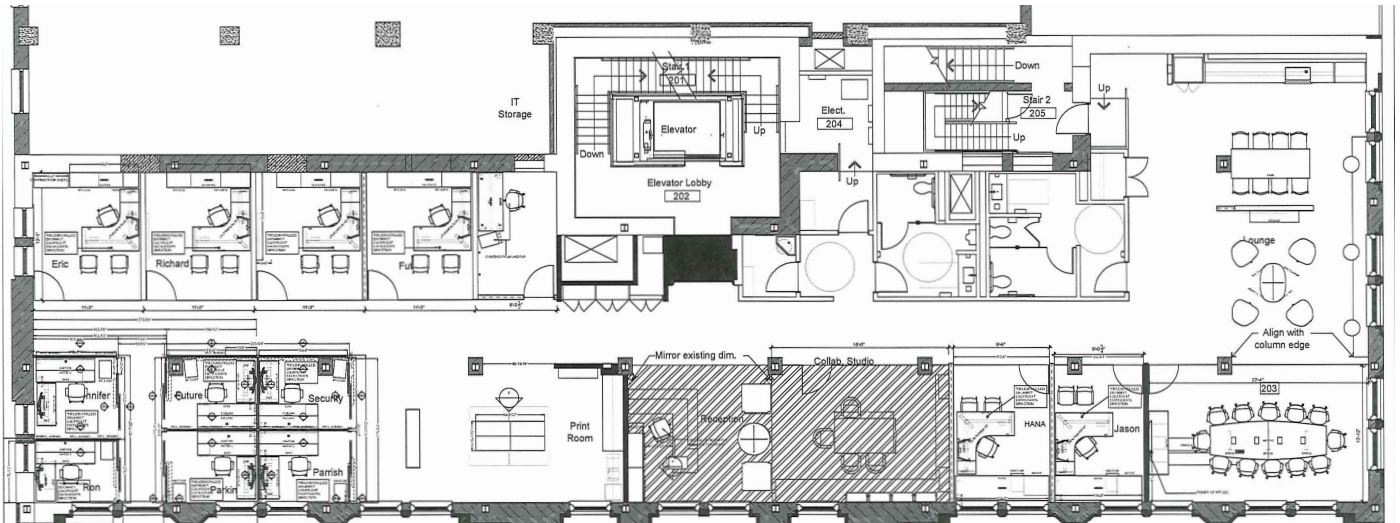
± 19,825 SF AVAILABLE

CUSHMAN &
WAKEFIELD

COMMERCIAL
OKLAHOMA

FOR
LEASE

3RD FLOOR | ± 5,975 SF
FLOORPLAN



4TH FLOOR | ± 5,975 SF
FLOORPLAN

