

# 9217 CODY STREET

## OVERLAND PARK, KANSAS 66214

OFFICE/WAREHOUSE SPACE FOR LEASE | 6,000± SF

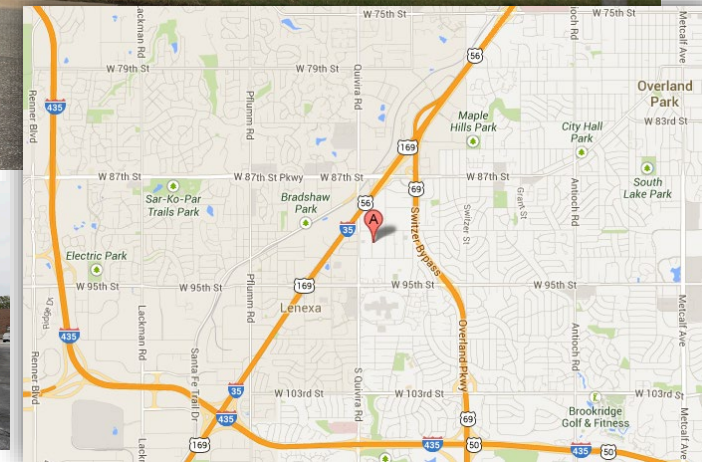
### CONGLETON BUSINESS PARK

## PROPERTY FEATURES

- Newly-renovated office/warehouse
- End cap space
- Private office layout
- Large breakroom with kitchen
- 1 dock-high door with ability to add 1-2 additional

### ADDITIONAL INFO

TOTAL SIZE	6,000± SF
OFFICE SPACE	1,300± SF
WAREHOUSE SPACE	4,700± SF
LEASE RATE	\$9.50 NNN
TAXES	\$2.11 PSF
INSURANCE	\$0.38 PSF
CAM	\$1.41 PSF



For more information, please contact:

**MATTHEW SEVERNS, SIOR, CCIM**

Industrial Brokerage

913.787.7636

[mseverns@kessingerhunter.com](mailto:mseverns@kessingerhunter.com)

**BRIAN SHERMAN**

Industrial Brokerage

913.558.0459

[bsherman@kessingerhunter.com](mailto:bsherman@kessingerhunter.com)

**KESSINGER/HUNTER & COMPANY, LC**

2600 Grand Boulevard, Suite 700

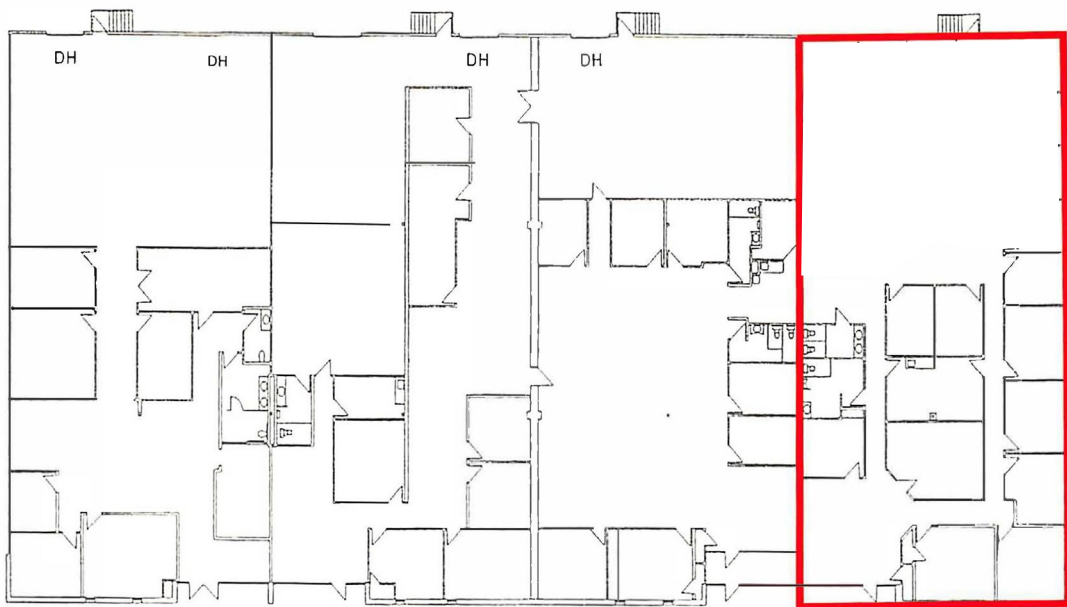
Kansas City, MO 64108

816.842.2690

[www.kessingerhunter.com](http://www.kessingerhunter.com)

# 9217 CODY, OVERLAND PARK, KANSAS 66214

## Office/Warehouse Space for Lease



DH - Dock High



For more information, please contact:

**MATTHEW SEVERNS, SIOR, CCIM**

Industrial Brokerage

913.787.7636

[mseverns@kessingerhunter.com](mailto:mseverns@kessingerhunter.com)

**BRIAN SHERMAN**

Industrial Brokerage

913.558.0459

[bsherman@kessingerhunter.com](mailto:bsherman@kessingerhunter.com)

**KESSINGER/HUNTER & COMPANY, LC**

2600 Grand Boulevard, Suite 700

Kansas City, MO 64108

816.842.2690

[www.kessingerhunter.com](http://www.kessingerhunter.com)