

FOR SUBLEASE



Trophy Office Space for Sublease in South End

2151 Hawkins Street, Suite 1025

SPACE PROFILE

12,082 SF

Total SF

Immediate

Availability

Negotiable

Rental rate

30 unreserved

Parking spaces

12/31/30

Term

Available

Furniture

Cristy Nine
Corporate Managing Director
cnine@savills.us
+1 704 506 2301

savills

8th Floor Sky Lobby



RAIL TRAIL



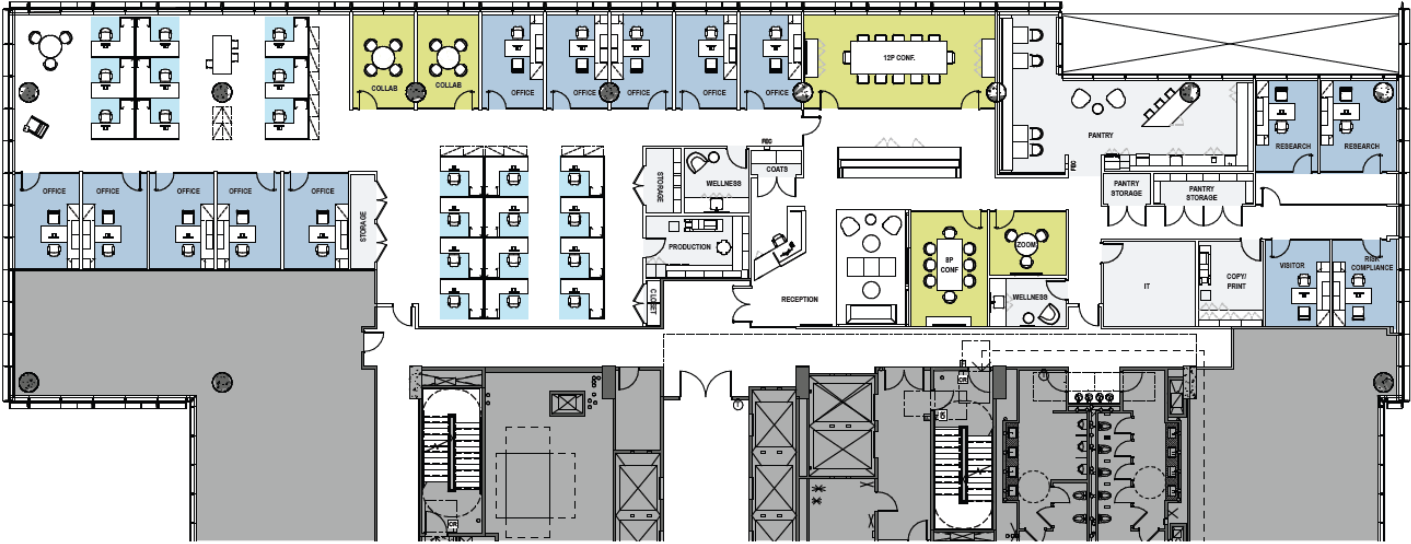
HAWKINS STREET

BUILDING DETAILS:

- 316,000 sf mixed use development
- Located in highly sought-after South End submarket
- On-site parking (2.5/1,000)
- 8th floor sky lobby with views of Uptown and South End
- Steps away from light rail and rail trail
- Amenities include rooftop terrace, bike storage, EV chargers
- Ground floor retail boasts Sycamore Brewing, Chapter 6, Gritbox Fitness
- LEED Certified and 3-star Fitwel Healthy Building Design Certified

10TH FLOOR

12,082 SF Available



SPACE DETAILS:

- Reception area
- Fully enclosed kitchen space
- 14 private offices
- 21 bullpen workstations
- 2 conference rooms
- 3 collaboration rooms
- 2 wellness rooms
- 2 work rooms
- IT/server room
- Multiple storage/coat closets
- Plug-and-play furniture

