



# CENTERPOINT

MISSION VALLEY



3110

3110 & 3160  
CAMINO DEL RIO SOUTH  
SAN DIEGO, CA 92108



## BROKER BONUS

\$1.00 Per Square Foot  
for a 3-year lease  
or longer



# CENTERPOINT

MISSION VALLEY

## AVAILABILITY

### 3110 CAMINO DEL RIO SOUTH

SUITE	SF	AVAILABLE	LEASE RATE	NOTES
A-200	681	Now	\$2.35 + E	Reception and 2 Offices
A-219	841	Now	\$2.35 + E	Reception, 3 Offices, and Break Room
A-220	846	1/1/2027	\$2.35 + E	Reception and 3 Offices

### 3160 CAMINO DEL RIO SOUTH

SUITE	SF	AVAILABLE	LEASE RATE	NOTES
B-118	1,384	Now	\$2.35 + E	Reception, 2 Offices, Conference Room, Break Room, and Open Area
B-312	1,160	Now	\$2.35 + E	3 Offices, Conference Room, & Break Room

Virtual Tour



**3110 CAMINO DEL RIO SOUTH**



**3160 CAMINO DEL RIO SOUTH**



## PROPERTY HIGHLIGHTS



Lease Rate

\$2.35 /SF + Electric



Spec Suites

Available



Parking Ratio

Excellent at 3.5/1,000



Elevator-Served

Greater accessibility and convenience



Unparalleled Freeway Access

Near five major arterial freeways



Renovated Common Areas

Fosters a modern and inviting atmosphere

**Renovated  
Common Areas**



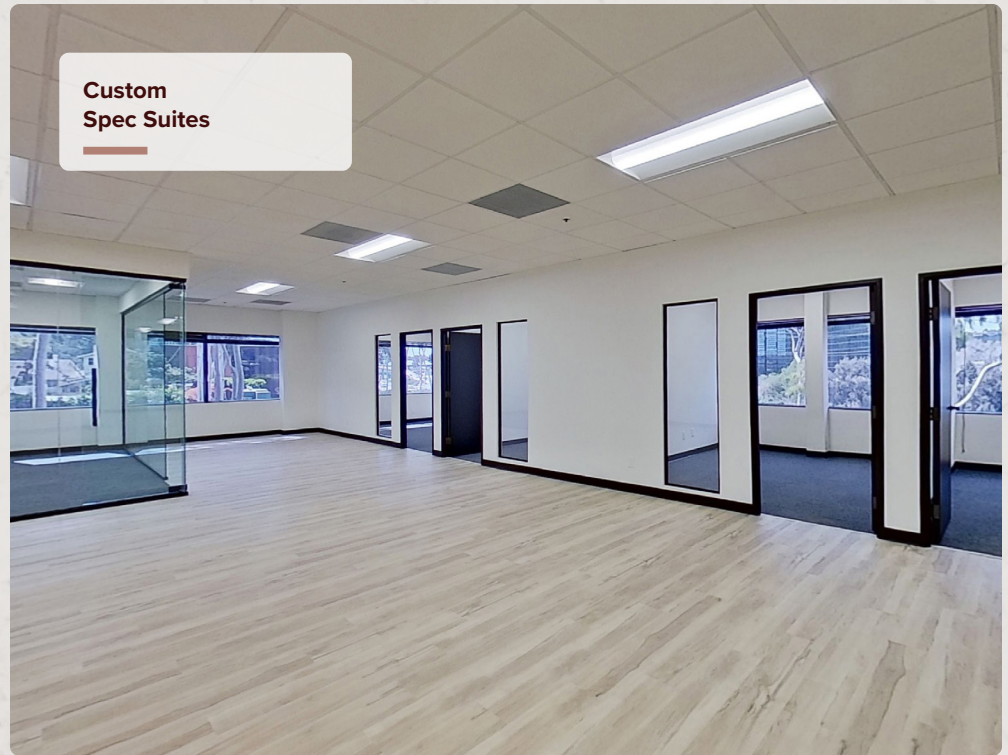
**Elevator-Served  
Building**



**Custom  
Spec Suites**

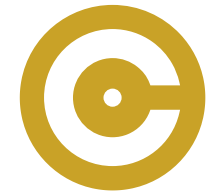


**Custom  
Spec Suites**

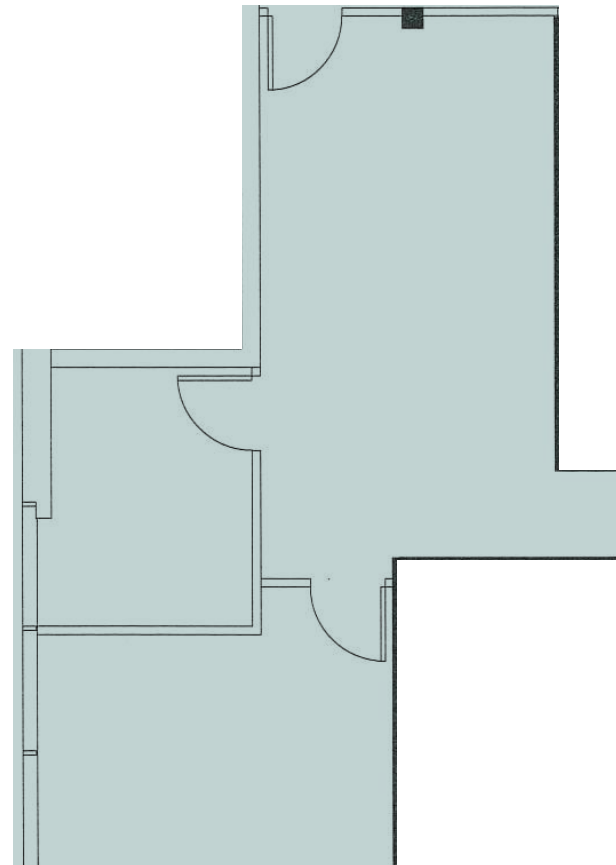


# 3110 CAMINO DEL RIO SOUTH

## SECOND FLOOR



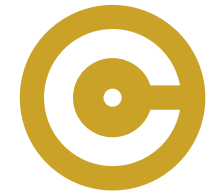
SUITE	A-200
SIZE	681 SF
AVAILABLE	NOW
NOTES	RECEPTION AND 2 OFFICES



SUITE A-200

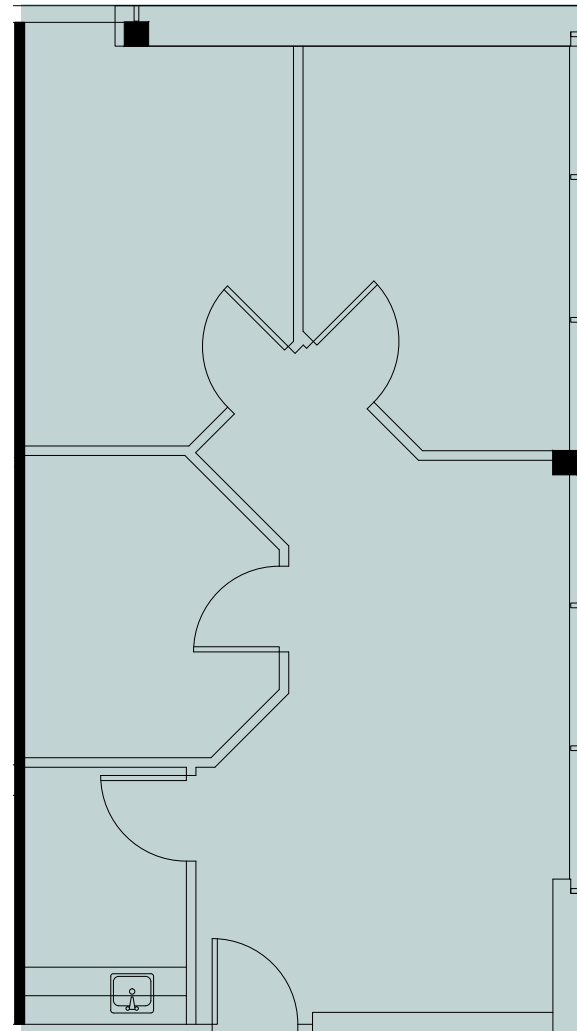
# 3110 CAMINO DEL RIO SOUTH

## SECOND FLOOR



SUITE	A-219
SIZE	841 SF
AVAILABLE	NOW

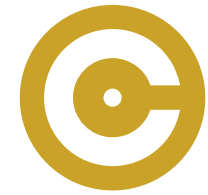
NOTES RECEPTION, 3 OFFICES,  
AND BREAK ROOM



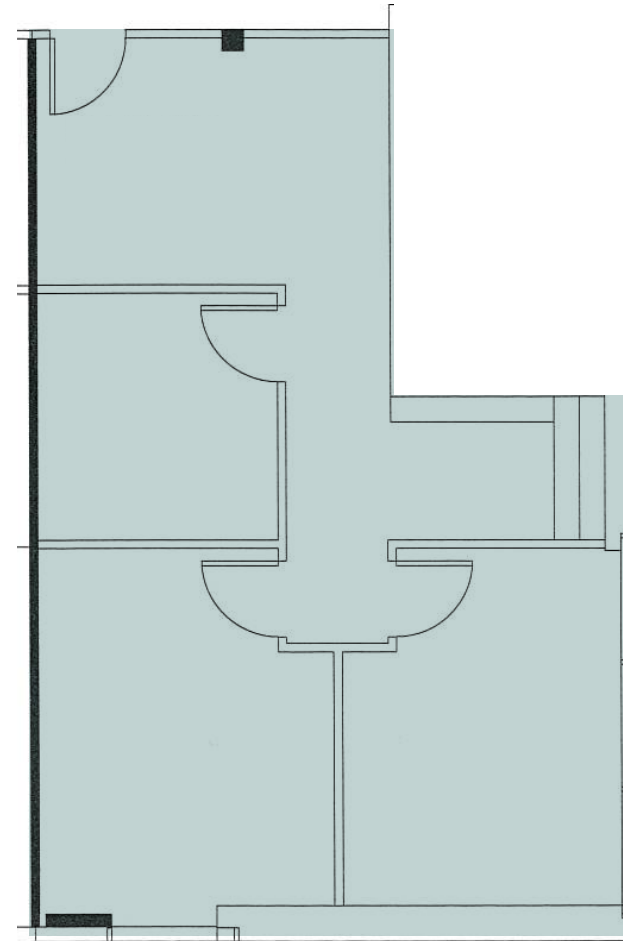
SUITE A-219

# 3110 CAMINO DEL RIO SOUTH

## SECOND FLOOR



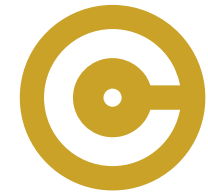
SUITE	A-220
SIZE	864 SF
AVAILABLE	1/1/2027
NOTES	RECEPTION AND 3 OFFICES



SUITE A-220

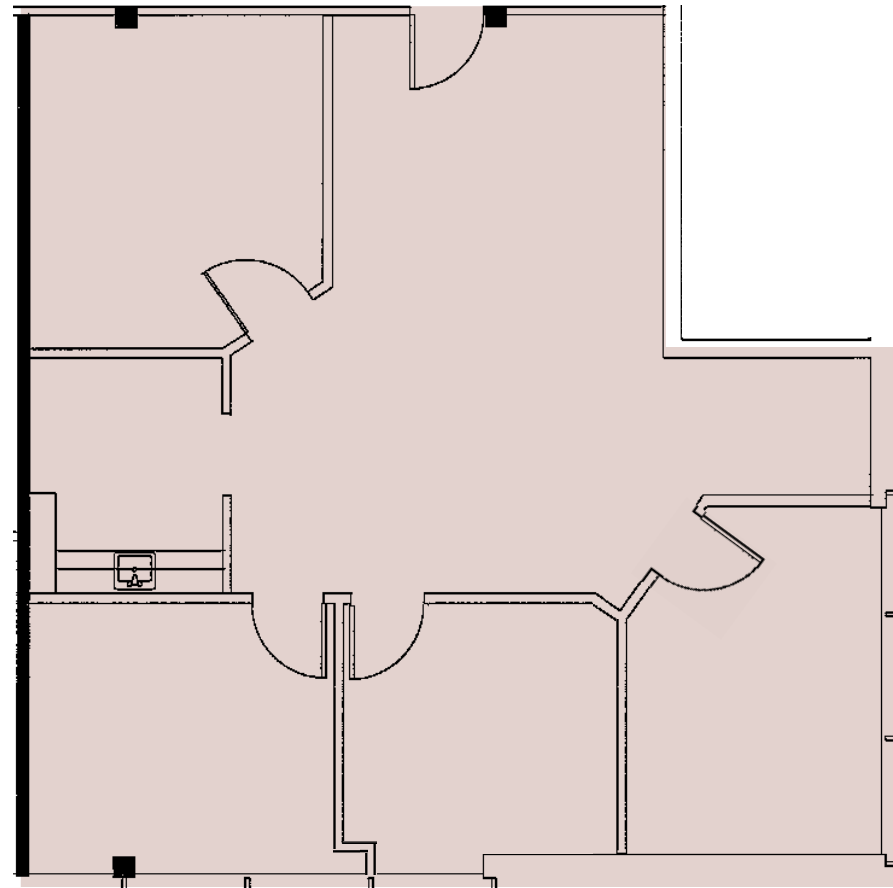
# 3160 CAMINO DEL RIO SOUTH

FIRST FLOOR



SUITE	B-118
SIZE	1,384 SF
AVAILABLE	NOW

NOTES  
RECEPTION, 2 OFFICES,  
CONFERENCE ROOM,  
BREAK ROOM, &  
OPEN AREA



Click To  
Tour Suite

SUITE B-118

SUITE B-312

SIZE 1,160 SF

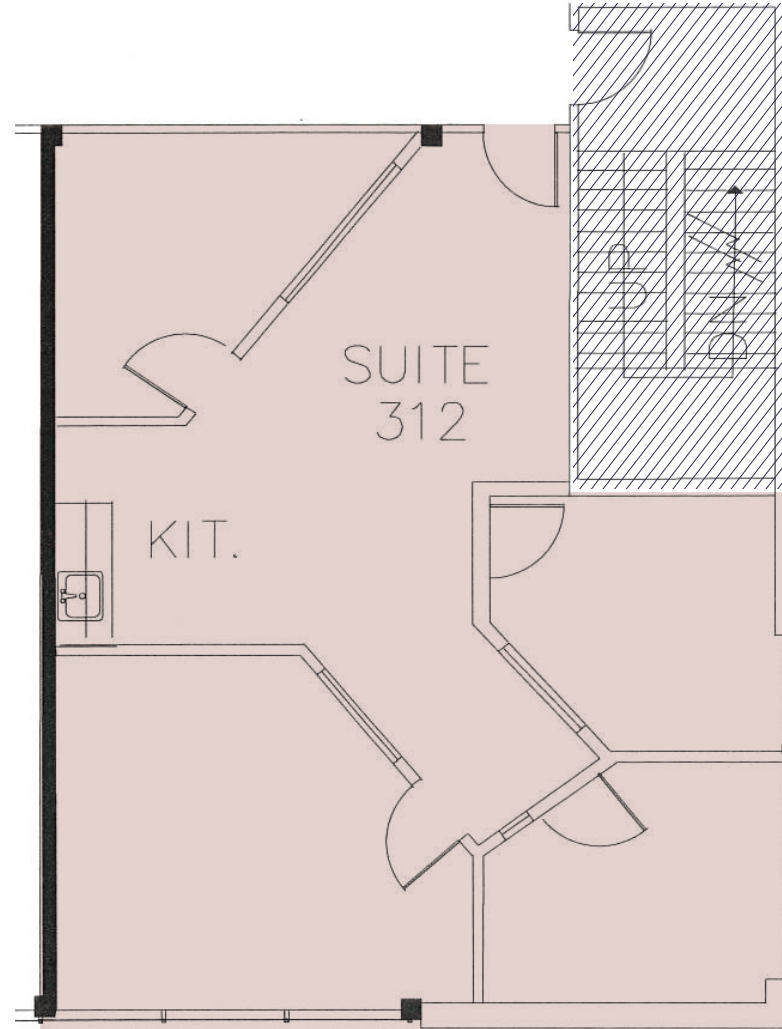
AVAILABLE NOW

NOTES 3 OFFICES,  
CONFERENCE ROOM,  
AND BREAK ROOM



# 3160 CAMINO DEL RIO SOUTH

THIRD FLOOR



SUITE B-312

MISSION VALLEY  
MALL  
1.6 MILES

RIO VISTA  
TROLLEY  
STATION  
1.7 MILES



I-15

2 Minutes

I-8

4 Minutes

SR-163

4 Minutes

I-805

7 Minutes

Mission Valley Mall

5 Minutes

Fashion Valley Mall

8 Minutes

San Diego Intl Airport

10 Minutes

3110  
CDRS



3160  
CDRS

COMMUTER HIGHLIGHTS

CAMINO DEL RIO SOUTH

# Over 600

## MULTIFAMILY UNITS UNDER CONSTRUCTION

At the geographic midpoint of San Diego, Mission Valley is experiencing a coming of age. Under construction throughout its 2,400 acres are an array of residential, retail, and commercial, projects — making the area a walkable, bikeable, riverside utopia.

## AREA DEMOGRAPHICS

240,923

Population

\$108,533

Average Household Income

34

Median Age

60%

Percent of Population with Degrees

*\*Values for 2023*

## MISSION VALLEY LOCATION HIGHLIGHTS



Boasting unparalleled access to five major freeway routes

## Mission Valley: San Diego's Thriving **Business Epicenter**

Experience the energy of a central business district with the convenience of ample parking and world-class amenities in Mission Valley. Seamlessly connected to major freeways, Mission Valley provides a direct link to a diverse talent pool from surrounding communities. With a flourishing atmosphere and unparalleled accessibility, Mission Valley is San Diego's premier business destination.



3110 & 3160  
CAMINO DEL RIO SOUTH  
SAN DIEGO, CA 92108



# CENTERPOINT

MISSION VALLEY

OFFICE SUITES  
FOR LEASE

## CONTACT

---

**DEREK APPLBAUM**

Senior Vice President

+1 619 851 2628

[derek.applbaum@colliers.com](mailto:derek.applbaum@colliers.com)

CA RE Lic. #01280412

