

DELIVERING Q2 2027



RIVERSTONE PINNACLE PEAK

TWO BUILDING PROJECT TOTALING ±105,533 SF FOR LEASE
N 21ST AVE & W PINNACLE PEAK RD | PHOENIX, AZ

FOR MORE INFORMATION, CONTACT:

BOB LUNDSTEDT
Executive Vice President
O: 602.575.2311 | C: 602.363.7238
E: RLundstedt@daumcre.com

CHASE HEINEMANN
Senior Vice President
O: 602.575.2333 | C: 602.689.4071
E: CHeinemann@daumcre.com

SKIP CORLEY
Executive Vice President
O: 602.575.2303 | C: 602.469.5340
E: SCorley@daumcre.com


 **8 Miles**
from TSMC




D/AQ Corp. #01129558. Maps Courtesy ©Google & ©Microsoft. Although all information is furnished regarding for sale, rental or financing is from sources deemed reliable, such information has not been verified and no express representation is made nor is any to be implied as to the accuracy thereof, and it is submitted subject to errors, omissions, changes of price, rental or other conditions, prior sale, lease or financing, or withdrawal without notice.


RIVERSTONE PINNACLE PEAK FOR LEASE
N 21ST AVE & W PINNACLE PEAK RD | PHOENIX, AZ

PROPERTY HIGHLIGHTS



Building 1: ±20,279 SF
Building 2: ±85,254 SF
Total: ±105,533 SF


Q2 2027
Delivery


209-03-124
APN


A-1
Zoning


Neighboring 224 Acre
TSMC Supplier Site

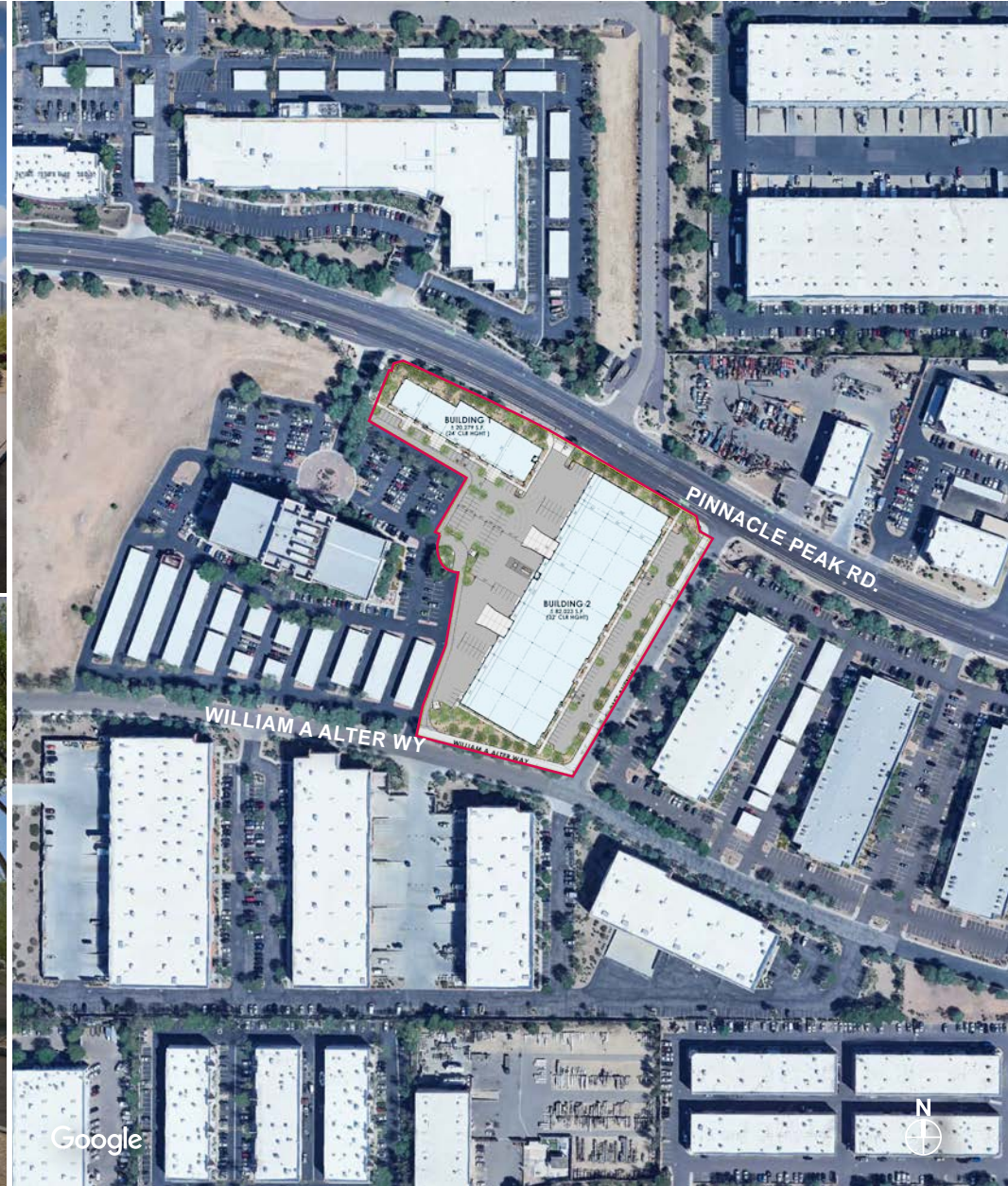

Located Minutes
from I-17 & Loop
101 Freeways



RIVERSTONE PINNACLE PEAK FOR LEASE

N 21ST AVE & W PINNACLE PEAK RD | PHOENIX, AZ

PHOTOS



D/AQ Corp. #01129558. Maps Courtesy ©Google & ©Microsoft. Although all information is furnished regarding for sale, rental or financing is from sources deemed reliable, such information has not been verified and no express representation is made nor is any to be implied as to the accuracy thereof, and it is submitted subject to errors, omissions, changes of price, rental or other conditions, prior sale, lease or financing, or withdrawal without notice.

RIVERSTONE PINNACLE PEAK FOR LEASE

N 21ST AVE & W PINNACLE PEAK RD | PHOENIX, AZ

ABOUT TSMC



INSIDE TSMC, THE TAIWANESE CHIPMAKING GIANT THAT'S BUILDING A NEW PLANT IN PHOENIX

Taiwan Semiconductor Manufacturing Co. (TSMC) is building the massive chip-making facility on a large 1129 acres of land, with an even larger \$165 billion investment. TSMC's new facility is near Interstate 17 and Loop 303, which the Taiwanese giant purchased back in December 2020.

TSMC's first fab in Arizona became operational in late 2024 and is now producing advanced 4nm chips. Construction of a second fab is complete, with production expected to begin in late 2027, and a third fab is already underway.

TSMC is training around 500 employees from Arizona, over in Taiwan right now where TSMC Arizona currently employs more than 3,000 people, with that number expected to grow to 6,000 as additional fabs come online.

Another positive for the US is that the existing semiconductor industry in Arizona has pulled the attention of other semiconductor industry companies to focus on Arizona, ever since TSMC announced its plans for the plant in Arizona.



RIVERSTONE PINNACLE PEAK FOR LEASE

N 21ST AVE & W PINNACLE PEAK RD | PHOENIX, AZ



\$165 BILLION TSMC SEMICONDUCTOR PLANT COMPLETELY TRANSFORMS THE ALREADY BOOMING LOCATION

- + Following a meeting at the White House today, President Trump and TSMC Chairman and CEO C.C. Wei announced a historic expansion of TSMC's advanced semiconductor operations in Arizona. TSMC will invest at least an additional \$100 billion to build three additional semiconductor fabs in Arizona as well as two advanced packaging facilities and a major R&D Center. The investment comes in addition to TSMC's three fabs already in operation or under construction in Arizona and will represent thousands of additional new jobs.
- + In January, TSMC announced it had begun producing advanced 4-nanometer chips for U.S. customers in Arizona, a first on American soil and a major milestone in the country's efforts to reshore manufacturing of the most advanced microchips. Its second fab, which is under construction, is expected to produce the world's most advanced 2nm process technology with next generation nanosheet transistors in addition to the previously announced 3nm technology. TSMC's third fab will produce chips using 2nm or more advanced processes, with production beginning by the end of the decade.
- + TSMC's historic announcement cements Arizona as the epicenter of advanced chip manufacturing and innovation in America," said Governor Katie Hobbs. "With the country's most advanced chip-making processes, world class university partners, and a robust and growing talent pipeline, Arizona is powering the groundbreaking technologies of the future like AI. I'm grateful to President Trump, TSMC, and all our partners for making this historic day possible.



TSMC announced its first fab in Arizona in May 2020. Since then, its presence has grown to three cutting-edge chip-making fabs and supporting facilities, representing a \$65 billion investment and 6,000 jobs. Today's announcement brings TSMC's total announced investment in Arizona to \$165 billion.

ABOUT TSMC



TSMC announced an additional \$100 billion investment to build three more semiconductor fabs, two advanced packaging facilities, and a major R&D Center, bringing TSMC's total announced investment in Arizona to \$165 billion. The historic investment further cements Arizona as a global hub of advanced chip manufacturing and will create thousands of jobs

- + TSMC is doubling down on its investment with an expansion in Phoenix testament to the U.S. semiconductor industry growth that will deliver a major win for American workers," said Mayor Kate Gallego. "This investment further strengthens domestic chip manufacturing, reduces reliance on foreign supply chains, and enhances national security. Billions in investment and thousands of high-tech, high-paying jobs illustrate how TSMC is a partner in cementing Phoenix as a global leader in semiconductor production. This expansion energizes innovation that fosters more economic growth, opportunities for skilled workers, and positions the Phoenix region at the forefront of advanced manufacturing.

- + Smart policy leads to big investment, and today's announcement is the latest proof that Arizona is getting it right. Our pro-business approach has made us a national leader in advanced manufacturing, and TSMC's expansion reinforces our position at the forefront of the semiconductor industry," said Danny Seiden, president and CEO of the Arizona Chamber of Commerce & Industry. "We appreciate President Trump's focus on bringing manufacturing back to the U.S. and reshoring critical industries like semiconductors. These investments ensure that the most advanced chips in the world are made right here in the United States, strengthening our economy and national security.

- + Greater Phoenix has built a competitive semiconductor ecosystem amplified by TSMC's initial investment, boasting world-class companies in research and development, packaging, chemicals, and other components of the supply chain," said Chris Camacho, President and CEO of the Greater Phoenix Economic Council. "This additional commitment from TSMC reflects the strength of our region to catapult vital technologies and will further position Greater Phoenix as an internationally recognized leader of next-generation innovation. boost will solidify Arizona's standing as a key hub in the semiconductor industry.

RIVERSTONE PINNACLE PEAK FOR LEASE

N 21ST AVE & W PINNACLE PEAK RD | PHOENIX, AZ

CORPORATE NEIGHBORS



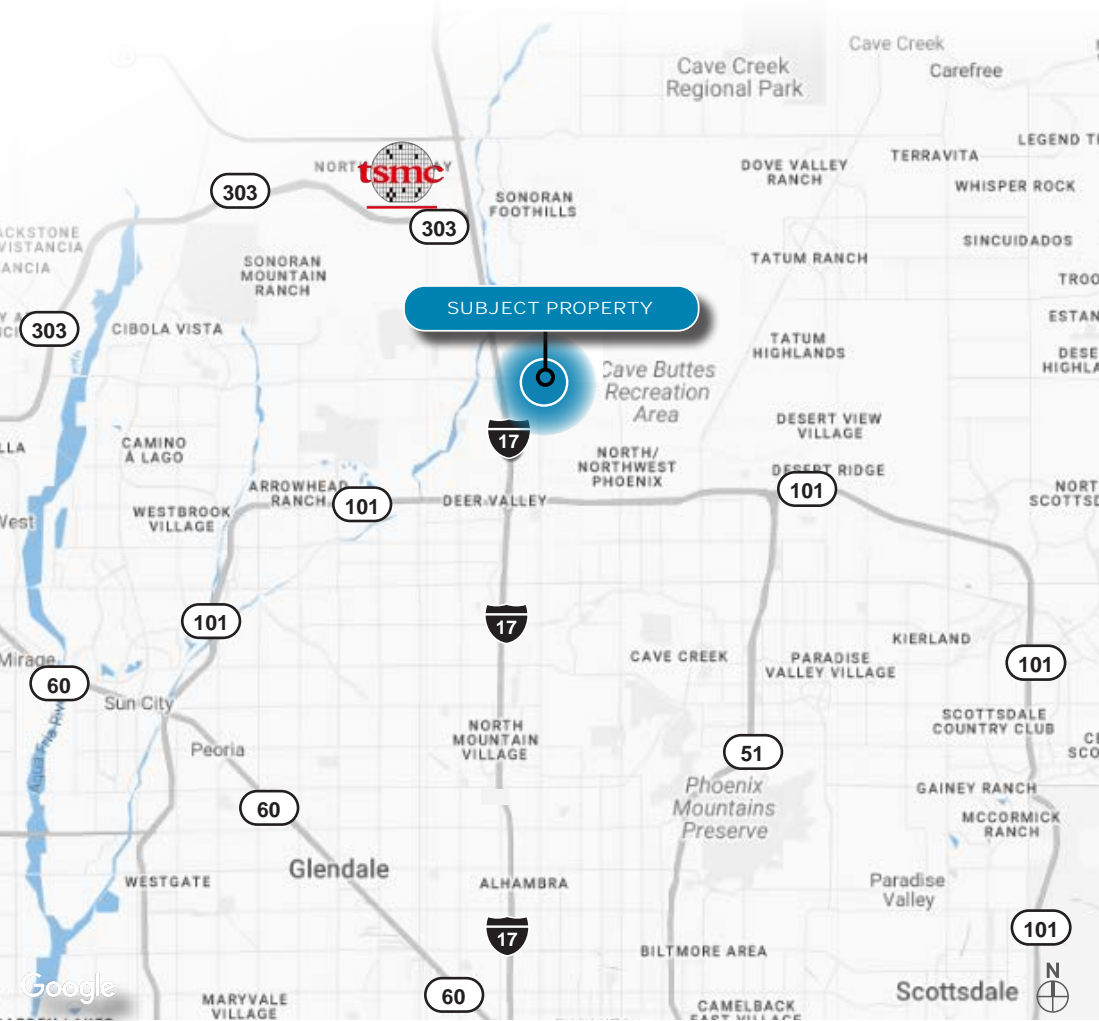
Google

D/AQ Corp. #01129558. Maps Courtesy ©Google & ©Microsoft. Although all information is furnished regarding for sale, rental or financing is from sources deemed reliable, such information has not been verified and no express representation is made nor is any to be implied as to the accuracy thereof, and it is submitted subject to errors, omissions, changes of price, rental or other conditions, prior sale, lease or financing, or withdrawal without notice.

RIVERSTONE PINNACLE PEAK FOR LEASE

N 21ST AVE & W PINNACLE PEAK RD | PHOENIX, AZ

LOCATION MAP



FOR MORE INFORMATION, CONTACT:

BOB LUNDSTEDT
Executive Vice President
O: 602.575.2311
C: 602.363.7238
E: RLundstedt@daumcre.com

CHASE HEINEMANN
Senior Vice President
O: 602.575.2333
C: 602.689.4071
E: CHeinemann@daumcre.com

SKIP CORLEY
Executive Vice President
O: 602.575.2303
C: 602.469.5340
E: SCorley@daumcre.com

DEMOGRAPHICS

	3 MILES	5 MILES	10 MILES
2020 Population	60,126	192,818	783,748
2024 Population	63,386	196,132	795,851
2029 Population Projection	68,932	212,027	860,090
Annual Growth 2020-2024	1.4%	0.4%	0.4%
2024 Households	25,031	76,914	306,542
Avg Household Income	\$103,006	\$99,837	\$103,058
Total Specified Consumer Spending (\$)	\$856.6M	\$2.6B	\$10.7B

D/AQ Corp. #01129558. Maps Courtesy ©Google & ©Microsoft. Although all information is furnished regarding for sale, rental or financing is from sources deemed reliable, such information has not been verified and no express representation is made nor is any to be implied as to the accuracy thereof, and it is submitted subject to errors, omissions, changes of price, rental or other conditions, prior sale, lease or financing, or withdrawal without notice.