



ARES  
INDUSTRIAL  
MANAGEMENT

AVAILABLE  
08/01/2026

# COUNTYLINE CORPORATE PARK

4120 W 104TH ST, HIALEAH, FLORIDA, 33018

FOR LEASE | 73,172 SQ FT | Class A Warehouse Facility



**WAYNE SCHUCHTS**

wayne.schuchts@srsre.com  
305-607-3845

**ANDREW LEHRER, SIOR**

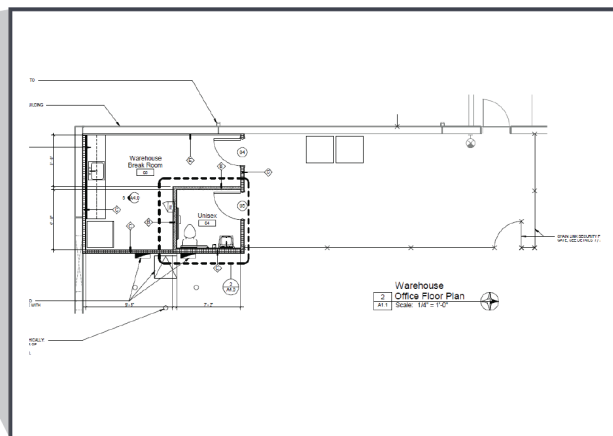
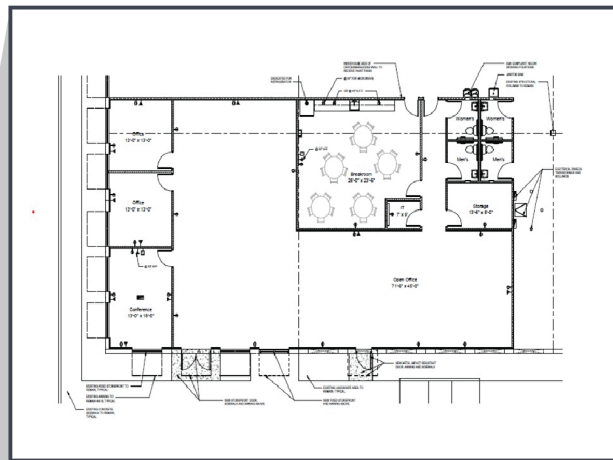
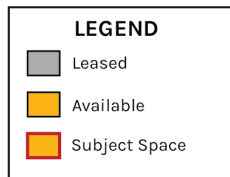
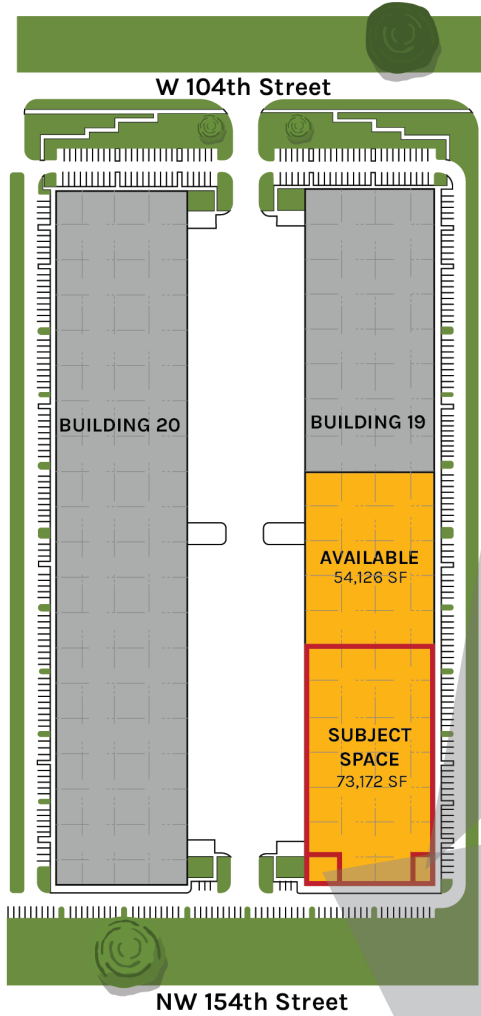
andrew.lehrer@srsre.com  
305-215-6591

**JARRETT HILLMAN**

jarrett.hillman@srsre.com  
609-361-4024

# Property & Space FEATURES

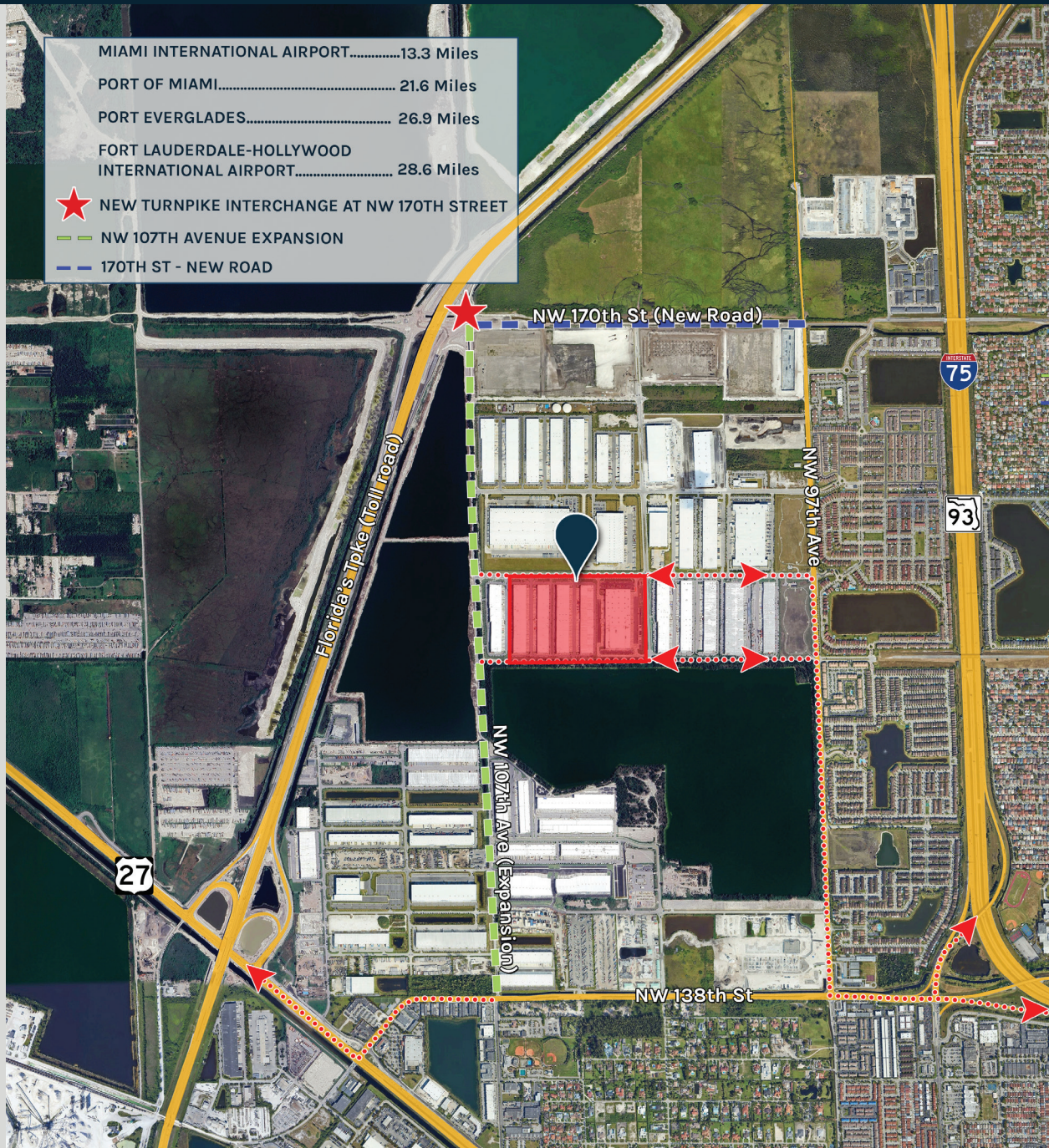
- 32' clear height
- ESRF sprinkler system
- LED lighting with motion sensors
- 54' x 50' column spacing (typical)
- 60' speed bay
- 180' shared truck court
- 3 - 24' HVLS fans
- ± 6,000 SQ FT newly built spec office (2 office pods)
- 260 SQ FT shipping office
- 22 docks & 1 oversized door with concrete ramp
- 4 edge of dock levelers
- 4 forklift charger connections
- 2 pit levelers



**ARES  
INDUSTRIAL  
MANAGEMENT**

# Location HIGHLIGHTS

- Strategic location in northern Miami near the Broward County line
- Immediate access to I-75 and Florida's Turnpike - the 2 largest highway systems in the state of FL
- New interchange at Florida's Turnpike and NW 170th Street
- Nearby amenities including Publix, restaurants, banks, Home Depot, gas stations and schools



**ARES**  
INDUSTRIAL  
MANAGEMENT

## ABOUT ARES MANAGEMENT CORPORATION

Ares Management Corporation (NYSE: ARES) is a leading global alternative investment manager offering clients complementary primary and secondary investment solutions across the credit, private equity, real estate and infrastructure asset classes. We seek to provide flexible capital to support businesses and create value for our stakeholders and within our communities. By collaborating across our investment groups, we aim to generate consistent and attractive investment returns throughout market cycles. For more information, please visit [www.aresmgmt.com](http://www.aresmgmt.com).



**WAYNE SCHUCHTS**

wayne.schuchts@srsre.com  
305-607-3845

**ANDREW LEHRER, SIOR**

andrew.lehrer@srsre.com  
305-215-6591

**JARRETT HILLMAN**

jarrett.hillman@srsre.com  
609-361-4024