

363  
WEST ERIE



CREATIVE LOFT OFFICE SPACE AVAILABLE!  
Suite 300 | 10,408 SF



# Suite 300 | 10,408 SF

- Available 12/1/23
- Prominent elevator ID
- Classic brick & timber loft building
- Abundant natural light
- Excellent existing conditions:
  - 11 offices
  - 22 workstations
  - 2 huddles/additional offices
  - Large kitchen & lounge area
  - Conference room
  - Private bathrooms





363  
WEST ERIE



Boutique office  
timber loft in  
River North



INVITING LOBBY



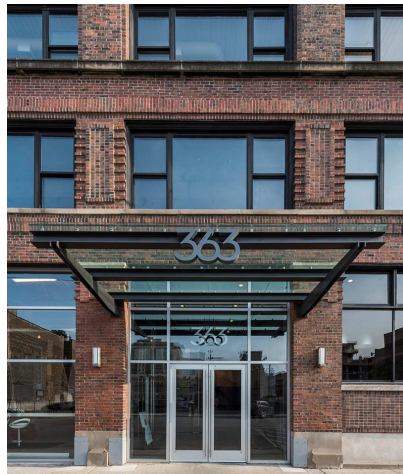
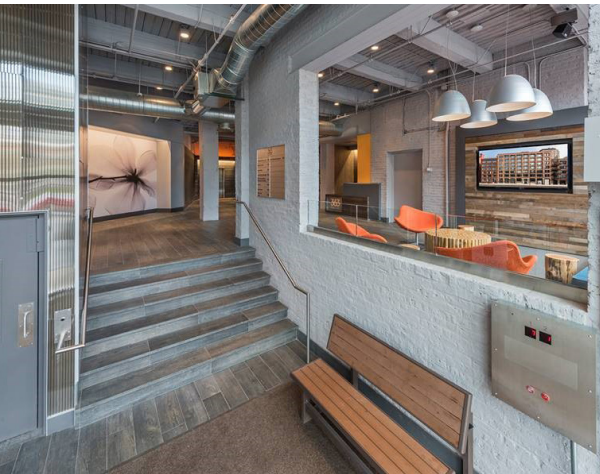
COFFEE HOUSE



NEW ELEVATORS



BIKE ROOM



KIM DOYLE  
312.228.3157  
kim.doyle@jll.com

ELLEN TRAGER  
312.228.3766  
ellen.trager@jll.com