

## PRICE

Suite 201  
3,000 SF @ \$17.95 PSF

Suite 203  
2,500 SF @ \$13.95 PSF

Suite 206  
426 SF @ \$750 per month  
plus electric

Suite 207  
394 SF @ \$650 per month

## ZONING

Commercial



## PRIME OFFICE & MEDICAL SUITES ALONG ROUTE 309

Position your business in a high-visibility location along the bustling Route 309 corridor, just minutes from the Colmar SEPTA train station. This property offers exceptional accessibility to key areas, including Montgomeryville, Ambler, Fort Washington, Souderton, and Quakertown.

### Property Highlights

- Multiple Suite Options- sizes and layouts:
  - Suite 201-203: Available individually or as a combined larger suite
  - Suite 206 and Suite 207: Rare small suites for a 1-2 person operation
- Ideal for growing practices or businesses
- Enjoy proximity to Montgomery Mall, with a wide variety of shopping and dining options—perfect for client meetings, employee lunches, or a quick errand between appointments.
- With Montgomery County District Court occupying space on the first floor, this is an ideal spot for a law office or other professional office

## PRESENTED BY

James R. Wrigley  
215-519-2290 (m) | 215-855-5100 (o)  
jimw@kpgcm.com

Keith T. Metzger  
267-218-4819 (m) | 215-855-5100 ext 118 (o)  
keithm@kpgcm.com

# OFFICE SPACE - LEASE

271 Bethlehem Pike, Colmar, PA 18915



## PRESENTED BY

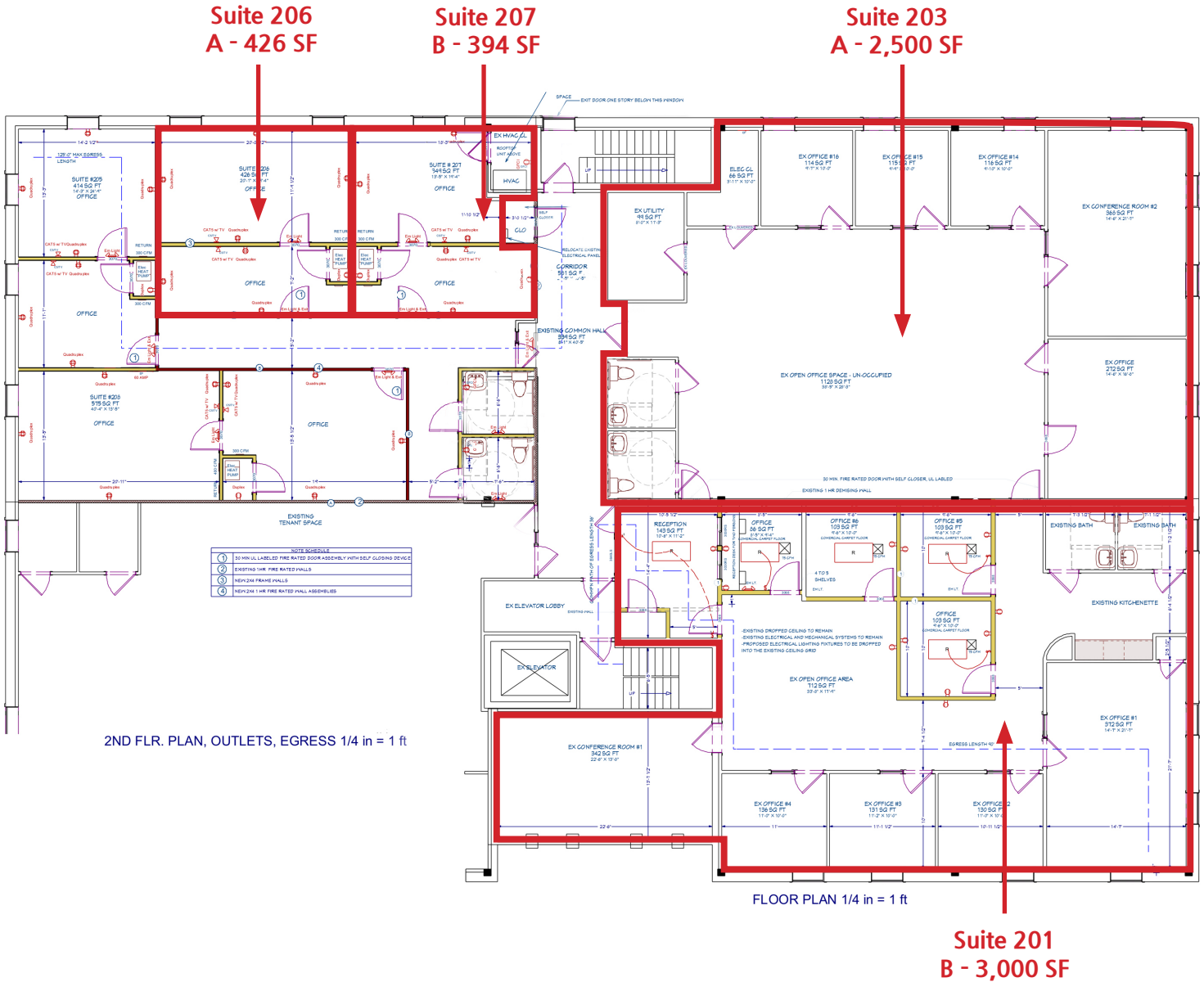
James R. Wrigley  
215-519-2290 (m)  
215-855-5100 (o)  
jimw@kpgcm.com

Keith T. Metzger  
267-218-4819 (m)  
215-855-5100 ext 118 (o)  
keithm@kpgcm.com



# OFFICE SPACE - LEASE

271 Bethlehem Pike, Colmar, PA 18915



## PRESENTED BY

James R. Wrigley  
215-519-2290 (m)  
215-855-5100 (o)  
jimw@kpgcm.com

Keith T. Metzger  
267-218-4819 (m)  
215-855-5100 ext 118 (o)  
keithm@kpgcm.com

