

5160 Fulton Drive

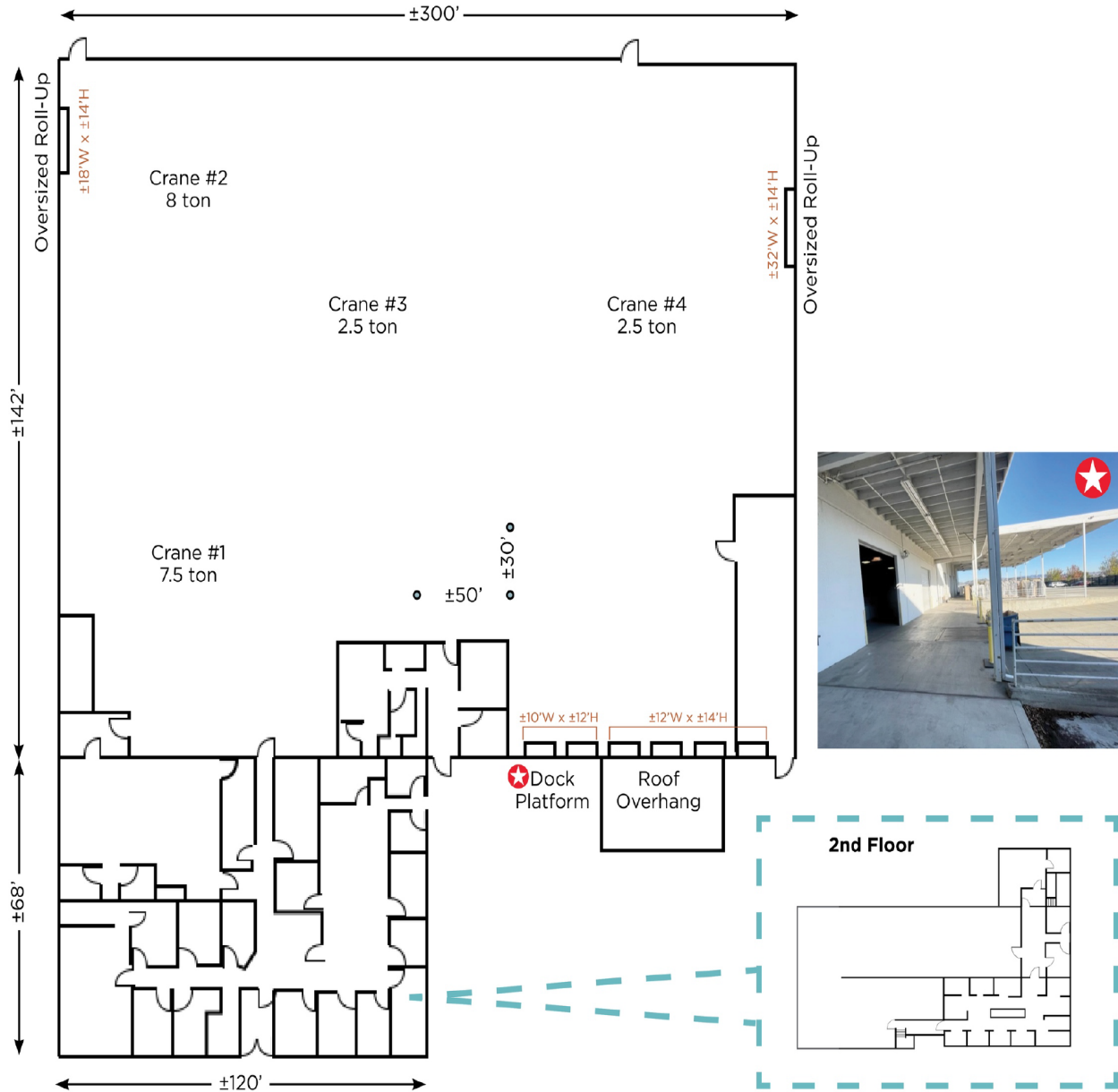
Fairfield, CA 94534

±60,694 SF (2.99 acre fully secured site) Available for Sublease



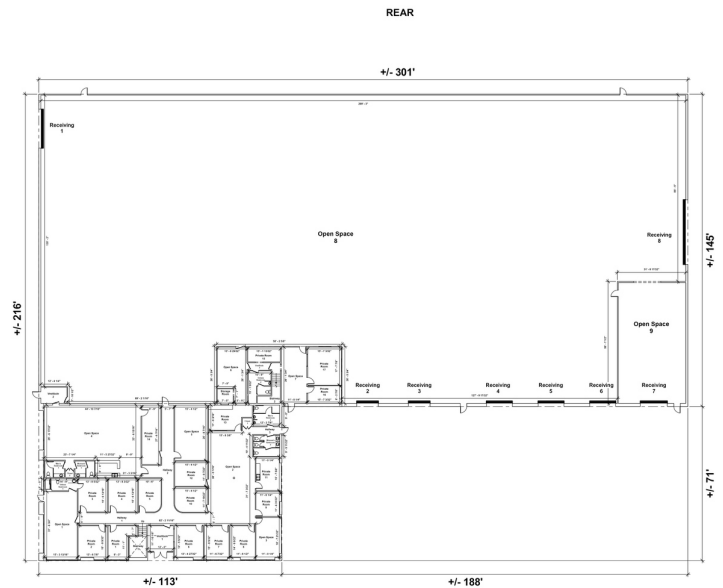
**±60,694 SF STANDALONE
FULLY SECURED LIGHT INDUSTRIAL BUILDING**

FLOOR PLAN

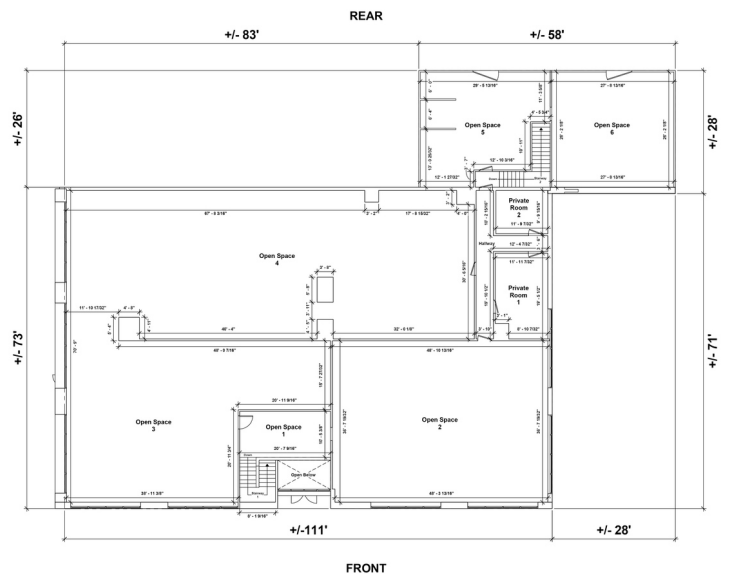


Property Highlights

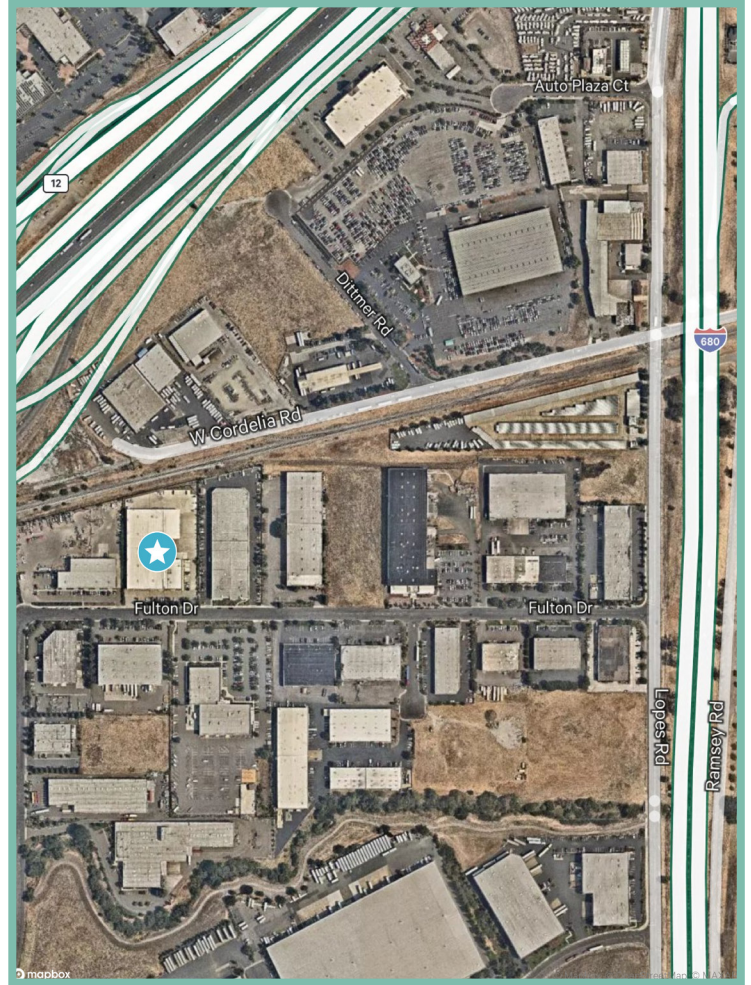
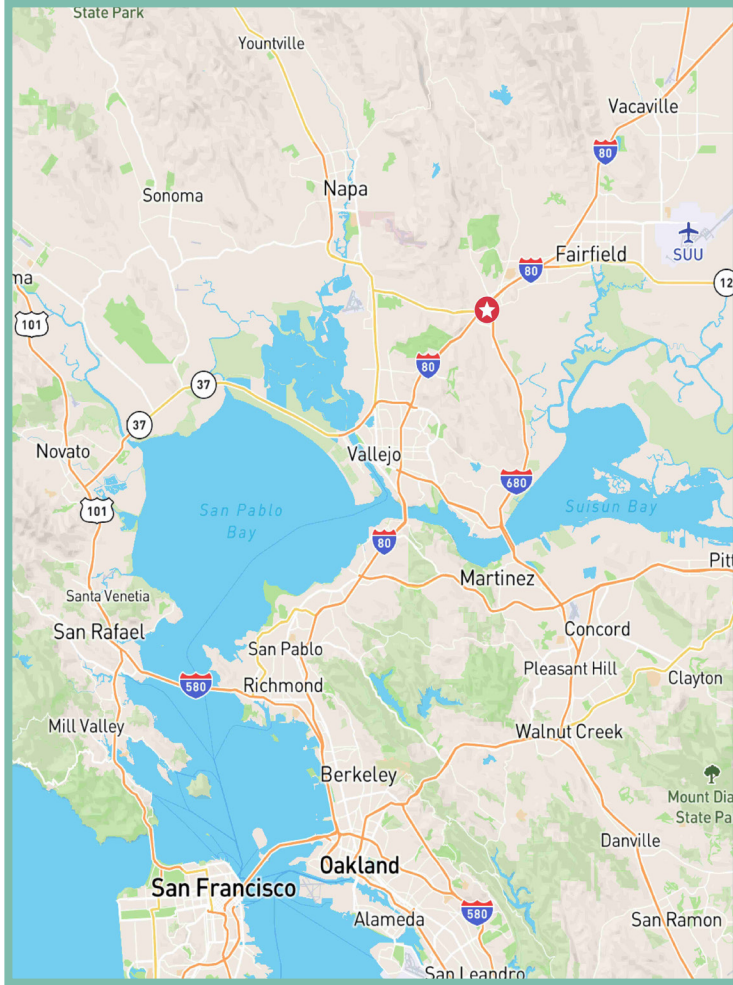
- Site: 2.99 Acre fully secured site
- Building SF: ±60,694
- Dimensions: 300' Wide x 216' Deep
- Office SF: ±10,000 SF (2 story)
- Six (6) Dock Doors accessed by partially covered multi position dock platform
- Four (4) cranes servicing the warehouse:
 - * Two (2) 2.5 ton cranes
 - * One (1) 7.5 ton crane
 - * One (1) 8 ton crane
- Two (2) oversized grade doors (side)
- Clear Height: ±24"
- Upgraded to 1600 amps, 277/480 volts
- Auto Parking: ± 63 parking spaces (marked)
- Concrete surface throughout drive aisles & staging areas
- Column Spacing: ±50'W x 30'D, subject to cranes (see floor plan)
- Sublease term expires: August 31, 2028



1st Floor



2nd Floor



Contact Us

Tony Binswanger, SIOR
Executive Vice President
+1 925 296 7728
tony.binswanger@cbre.com
Lic. 01861701

Brooks Pedder, SIOR
Vice Chairman
+1 925 296 7729
brooks.pedder@cbre.com
Lic. 00902154

Bo Harkins
First Vice President
+1 925 296 7727
bo.harkins@cbre.com
Lic. 01943785

© 2026 CBRE, Inc. All rights reserved. This information has been obtained from sources believed reliable, but has not been verified for accuracy or completeness. You should conduct a careful, independent investigation of the property and verify all information. Any reliance on this information is solely at your own risk. CBRE and the CBRE logo are service marks of CBRE, Inc. All other marks displayed on this document are the property of their respective owners, and the use of such logos does not imply any affiliation with or endorsement of CBRE. Photos herein are the property of their respective owners. Use of these images without the express written consent of the owner is prohibited.