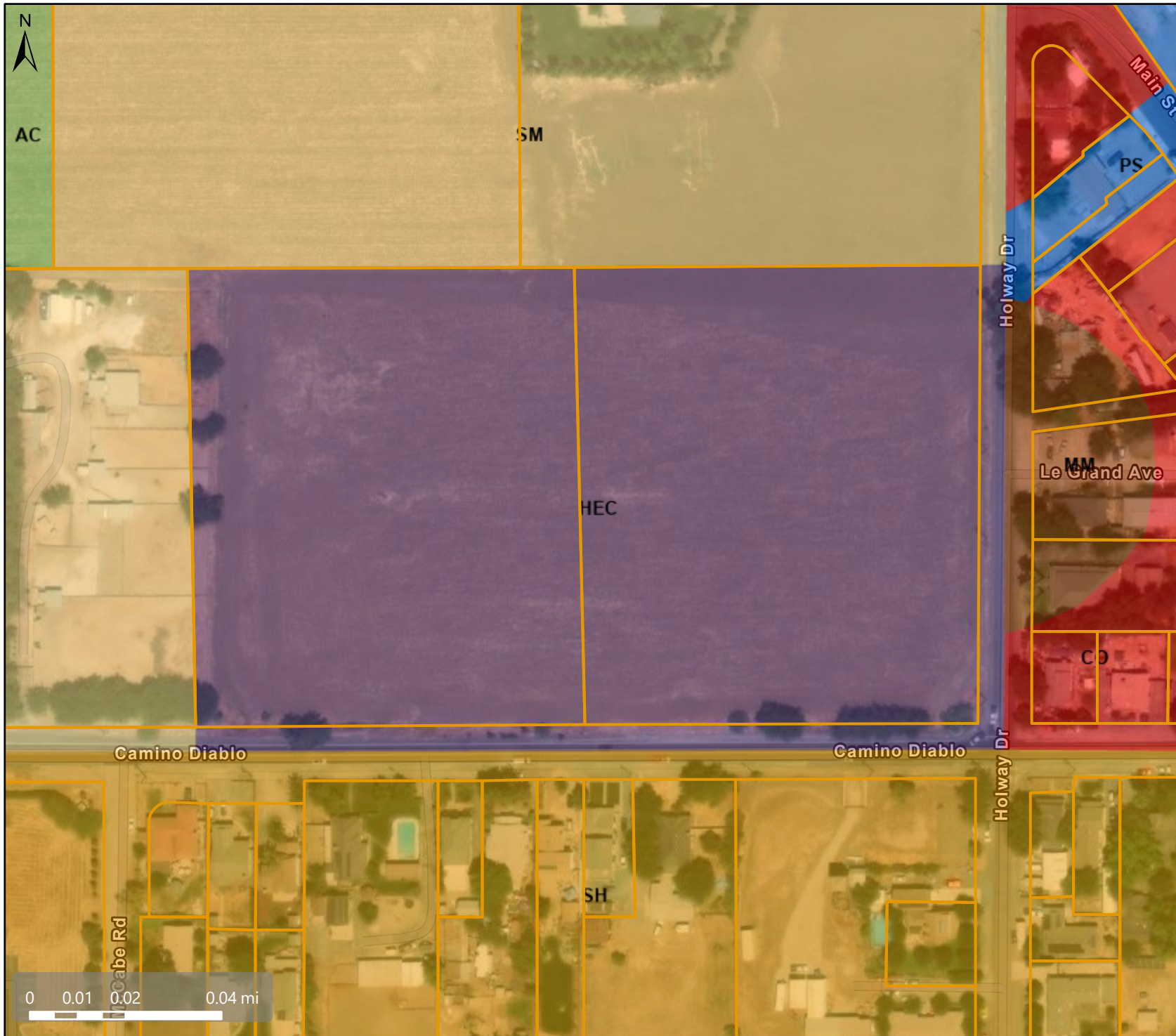




St. Anne's County General Plan- HEC, Housing Element Consistency



Map Legend

- Assessment Parcels
- Planning**
- General Plan**
- SM (Single Family Residential - Medium) 3.0 - 4.9 Units per Net Acre
- SH (Single Family Residential - High) 5.0 - 7.2 Units per Net Acre
- MM (Multiple Family Residential - Medium) 12.0 - 20.9 Units per Net Acre
- HEC (Housing Element Consistency) see Zoning table for density
- CO (Commercial)
- PS (Public/Semi-Public)
- AL (Agricultural Lands) 5 Acre Minimum Parcel Size
- AC (Agricultural Core) 40 Acre Minimum Parcel Size



This map is a user generated, static output from an internet mapping application and is intended for reference use only. Data layers that appear on this map may or may not be accurate, current, or otherwise reliable.

THIS MAP IS NOT TO BE USED FOR NAVIGATION.

CCMap is maintained by Contra Costa County Department of Information Technology, County GIS. Data layers contained within the CCMap application are provided by various Contra Costa County Departments. Please direct all data inquiries to the appropriate department.

Spatial Reference
 PCS: WGS 1984 Web Mercator Auxiliary Sphere
 Datum: WGS 1984