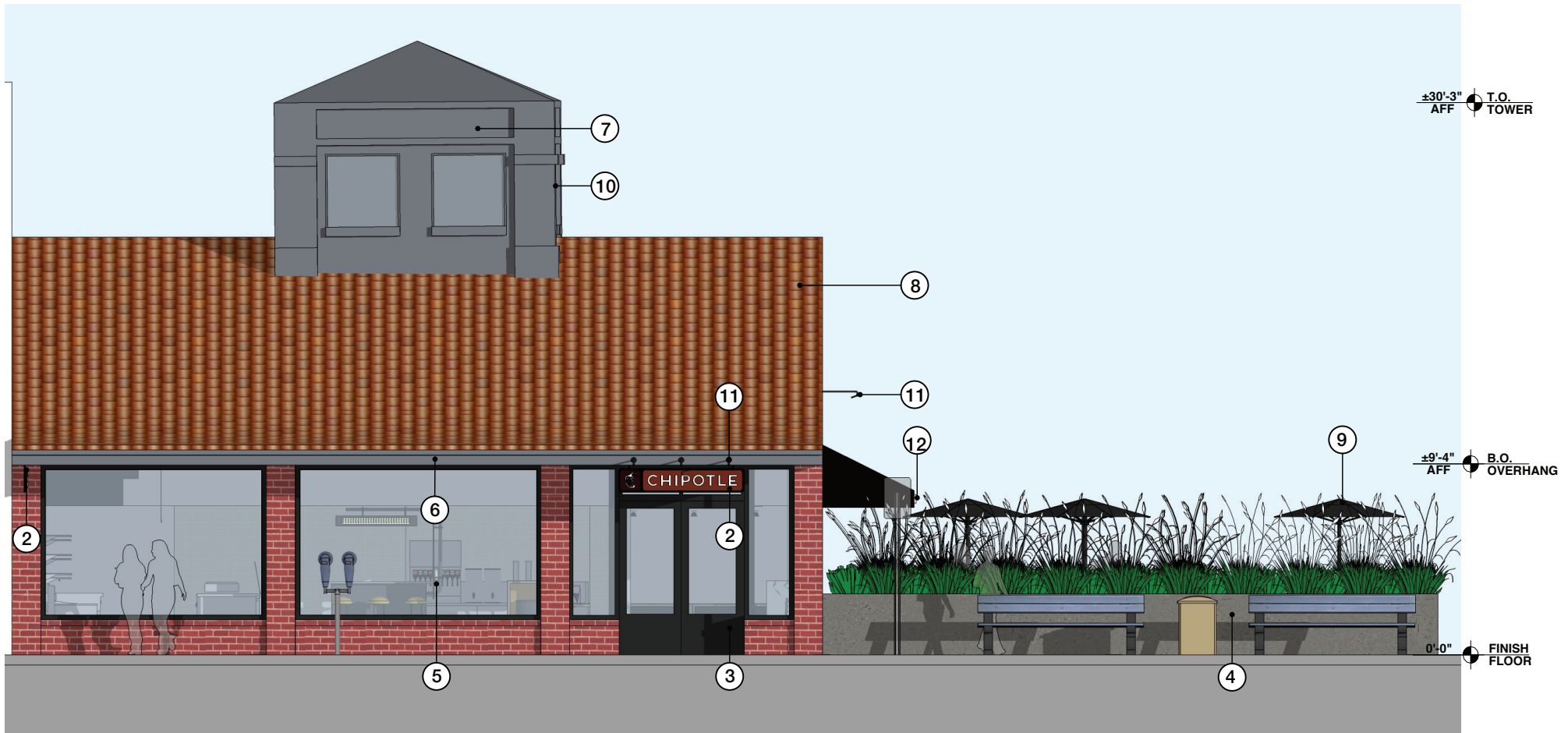
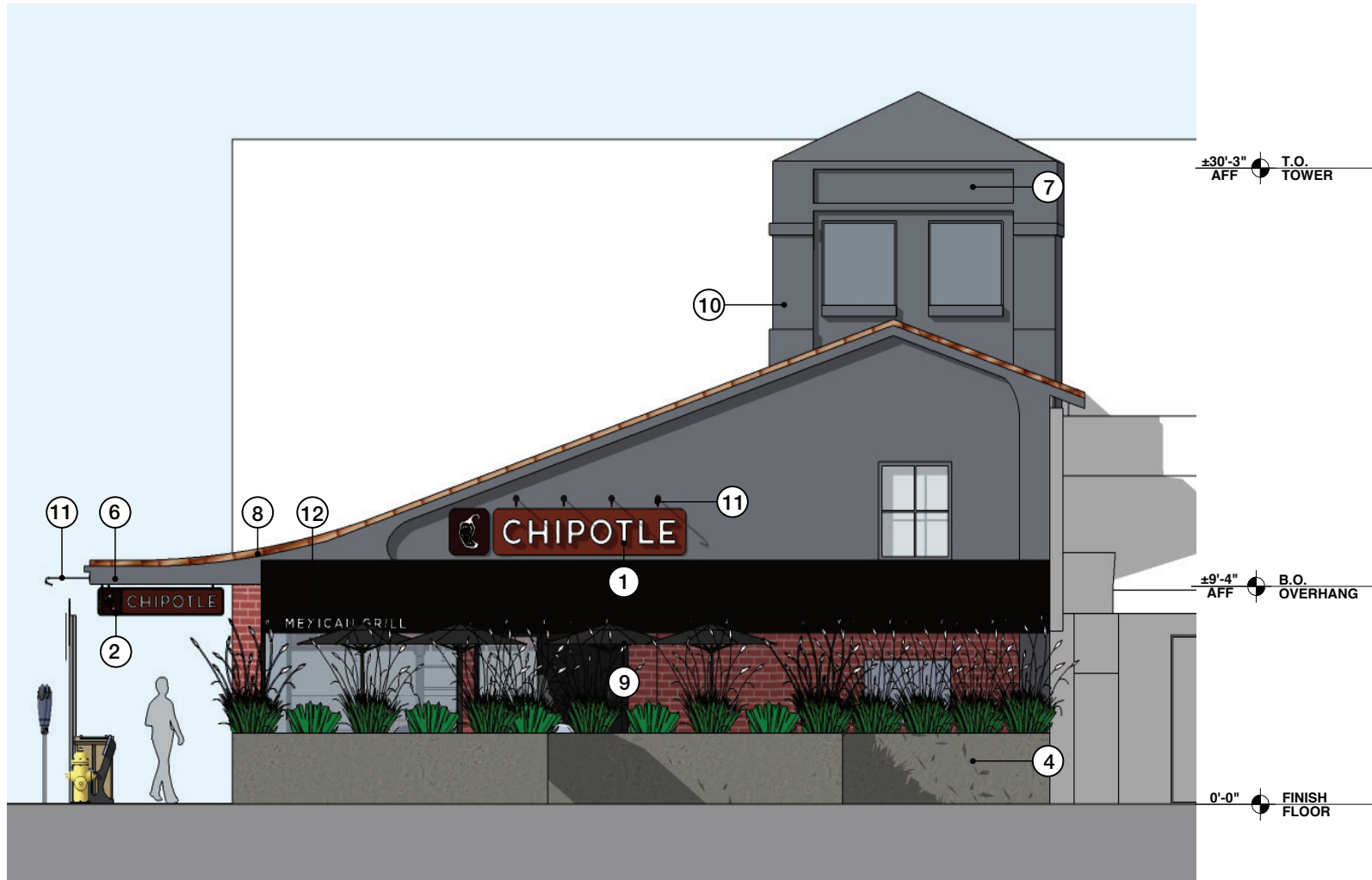


- KEY NOTES:**
- 1. PROPOSED SIGNAGE
 - 2. LINE OF EXT. CEMENT PLASTER SOFFIT ABOVE
 - 3. (E) ELECTRICAL METER FOR "HEALTHY CHINESE"
 - 4. STRUCTURAL COLUMN TYP.
 - 5. LINE OF AWNING ABOVE
 - 6. ART WALL
 - 7. EXTERIOR LIGHT FIXTURE



KEY NOTES:

- | | |
|--|---|
| <ol style="list-style-type: none"> 1. 6" HEIGHT LETTERS ON 2'-0" X 11'-7" PAINTED REDWOOD RAISED PANEL 2. 6" HEIGHT LETTERS ON 1'-2" X 6'-0" PAINTED REDWOOD RAISED PANEL 3. RELOCATED ENTRY DOOR (N) DARK ANODIZED STOREFRONT 4. 36" RAISED CONCRETE PLANTER 5. REMOVE (E) ENTRY AND PATCH AND REPAIR TO MATCH EXISTING 6. (E) EAVE PAINT CHARCOAL GRAY | <ol style="list-style-type: none"> 7. (E) "FOOD VILLAGE" SIGN TO REMAIN 8. (E) TILED ROOF TO REMAIN 9. BLACK FABRIC PATIO UMBRELLAS 10. (E) TOWER TO BE PAINTED CHARCOAL GRAY 11. MOUNTED LIGHT FIXTURE 12. (E) AWNING WITH 10" BLACK FABRIC WITH 5" PAINTED "MEXICAN GRILL SIGN" |
|--|---|



KEY NOTES:

- | | |
|---|--|
| <ul style="list-style-type: none"> 1. 6" HEIGHT LETTERS ON 2'-0" X 11'-7" PAINTED REDWOOD RAISED PANEL 2. 6" HEIGHT LETTERS ON 1'-2" X 6'-0" PAINTED REDWOOD RAISED PANEL 3. RELOCATED ENTRY DOOR (N) DARK ANODIZED STOREFRONT 4. 36" RAISED CONCRETE PLANTER | <ul style="list-style-type: none"> 7. (E) "FOOD VILLAGE" SIGN TO REMAIN 8. (E) TILED ROOF TO REMAIN 9. BLACK FABRIC PATIO UMBRELLAS 10. (E) TOWER TO BE PAINTED CHARCOAL GRAY 11. MOUNTED LIGHT FIXTURE |
|---|--|



LAGUNA BEACH
217 BROADWAY STREET,
LAGUNA BEACH, CA

EXT DESIGN REVIEW

SOUTH ELEVATION

4

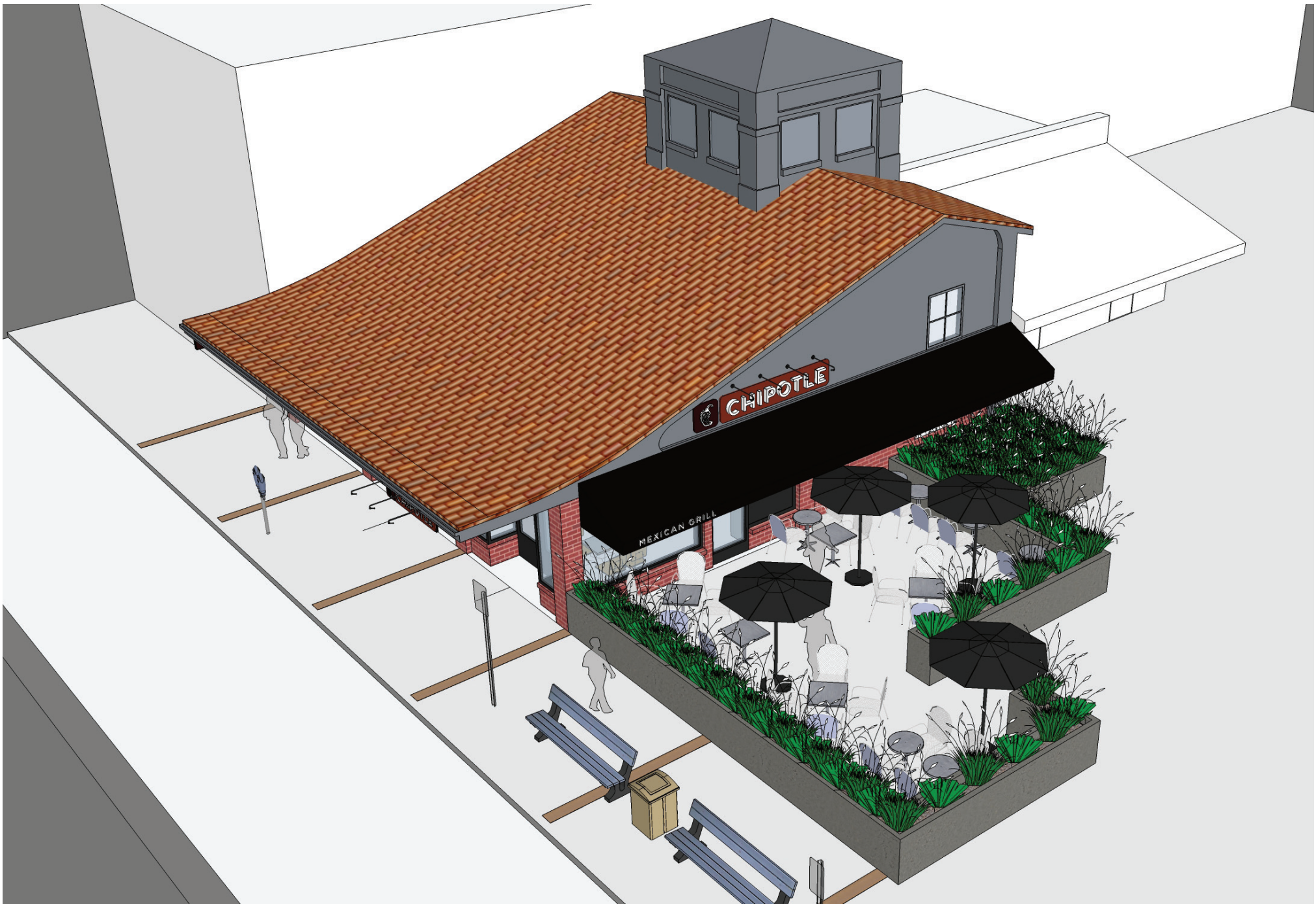
valerio architecture and interiors

Scale: N.T.S

Date: 12.17.10

Project No.: 829.10.70

5858 Wilshire Blvd #203 Los Angeles, CA 90036 T: 323.954.8996 F: 323.954.8965



LAGUNA BEACH
217 BROADWAY STREET,
LAGUNA BEACH, CA

EXT DESIGN REVIEW

AERIAL VIEW

5

valerio | architecture
and interiors

Scale: N.T.S

Date: 12.17.10

Project No.: 829.10.70

5858 Wilshire Blvd #203 T: 323.954.8996
Los Angeles, CA 90036 F: 323.954.8965



LAGUNA BEACH
217 BROADWAY STREET,
LAGUNA BEACH, CA

EXT DESIGN REVIEW

PERSPECTIVE VIEW

6

valerio | architecture
and interiors

Scale: N.T.S

Date: 12.17.10

Project No.: 829.10.70

5858 Wilshire Blvd #203 T: 323.954.8996
Los Angeles, CA 90036 F: 323.954.8965