

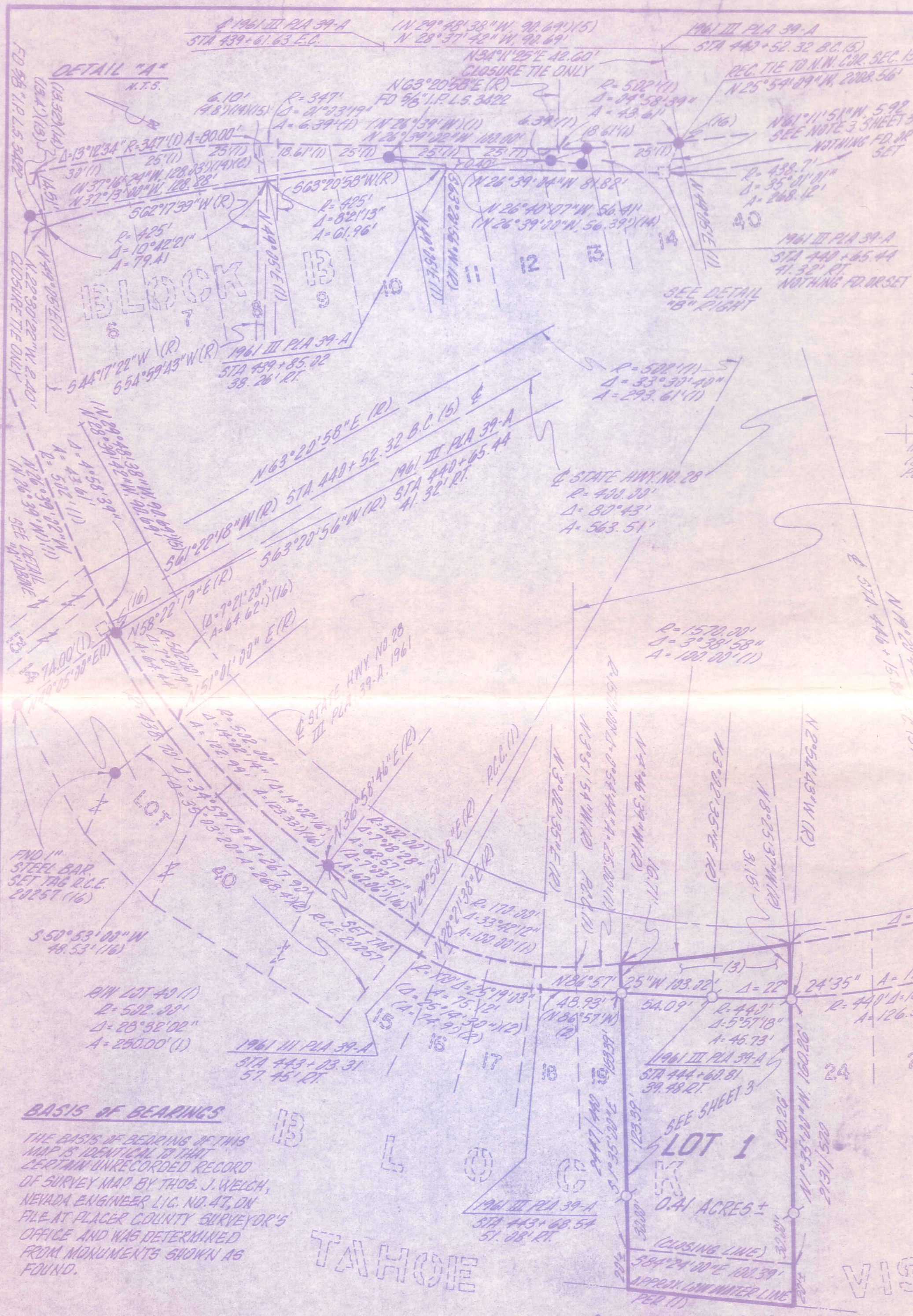
# HOLIDAY SHORES COMMERCIAL CONDOMINIUMS UNIT NO.1

TRACT NO. 563  
A 9 UNIT COMMERCIAL CONDOMINIUM PROJECT  
BEING LOTS 20, 21, 22, & 23, TAHOE VISTA SUBDIVISION NO.1 B MAPS 10  
SITUATE WITHIN A PORTION OF N1/2, SW1/4, NW1/4, SEC. 13, T.16N, R.17E, M.D.B. & M.  
PLACER COUNTY SHEET 2 OF 3  
FEBRUARY 1983 CALIFORNIA (X" ON ROCK) (14)

**LEGEND**

- FOUND IRON PIPE IN TAG SET TAG R.C.E. 20257 UNLESS NOTED OTHERWISE
- FOUND "X" REBAR, NO TAG SET TAG R.C.E. 20257
- FOUND MAIL 10" Ø 8" 2" HIGH CONC. RET. WALL
- FOUND 4" 1/2" CONC. HWY. R/W MONUMENT (2)
- SET 3/4" REBAR WITH PLASTIC CAP, R.C.E. 20257
- NOTHING FOUND OR SET
- (R) RADIAL
- (C) CALCULATED
- P.L. POINT ON LINE

- (1) BOOK 3 OF MAPS PAGE 10, PLACER CO RECORDS
- (2) III PLA 39 1936
- (3) 359 20 122 - EASEMENT FOR STATE OF CA.
- (4) 351 02 265
- (5) III PLA 39 A 1961
- (6) 2196 0 0 224
- (7) 364 0 0 163
- (8) 350 0 0 413
- (9) 352 0 0 485
- (10) 373 0 0 318
- (11) 2025 0 0 559
- (12) 347 0 0 386
- (13) 359 0 0 120
- (14) BOOK 6 OF SURVEYS, PAGE 62
- (15) 372 0 0 203
- (16) UNRECORDED MAPS PER NOTES 3 AND 4, SHEET 3



**BASIS OF BEARINGS**  
THE BASIS OF BEARING OF THIS MAP IS IDENTICAL TO THAT CERTAIN UNRECORDED RECORD OF SURVEY MAP BY THOS. J. WELCH, NEVADA ENGINEER LIC. NO. 47, ON FILE AT PLACER COUNTY SURVEYOR'S OFFICE AND WAS DETERMINED FROM MONUMENTS SHOWN AS FOUND.

SEE SHEET 3 OF 3 FOR NOTES.

**NOTE:**  
CENTERLINE STATIONING WHERE SHOWN IS TAKEN FROM THE 1961, III PLA 39 A HWY PLANS, THE R/W DATA AND ALIGNMENT IS TAKEN FROM THE 1936 III PLA 39 A HWY PLANS.

