



SPACE DETAILS

- 1,708 RSF
- Former Pharmacy space w/ Drive Thru
- Highly Visible to Newnan Crossing Blvd
- Close proximity to Piedmont Newnan Hospital
- Surrounded by numerous other Medical and Retail Tenants
- 0.5 miles to Interstate 85
- 27 Minutes to Hartsfield Jackson Int. Airport

THIS INFORMATION HAS BEEN SECURED FROM SOURCES WE DEEM RELIABLE, BUT WE MAKE NO REPRESENTATIONS OR WARRANTIES, EXPRESSED OR IMPLIED AS TO THE ACCURACY OF THE INFORMATION.

BARRY GARNER
VICE PRESIDENT
770-294-4027
bgarner@stcom.us

SEAN RAWSON
VICE PRESIDENT
678-920-1222
srawson@stcom.us



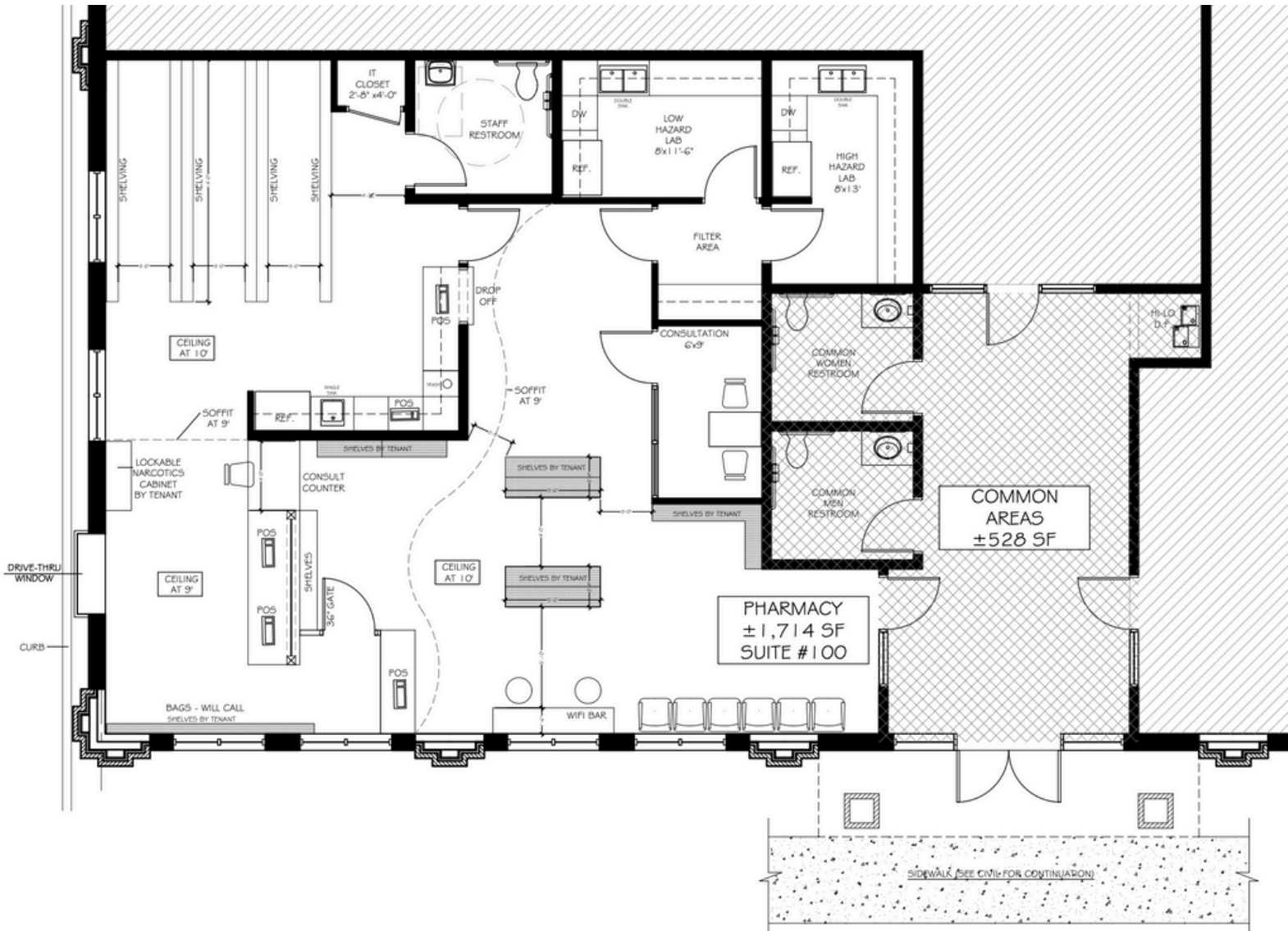
STCOM.US



770-631-0499



201 PROSPECT PARK, SUITE A,
PEACHTREE CITY, GA 30269



BARRY GARNER
 VICE PRESIDENT
 770-294-4027
 bgarner@stcom.us

SEAN RAWSON
 VICE PRESIDENT
 678-920-1222
 srawson@stcom.us

STCOM.US

770-631-0499

201 PROSPECT PARK, SUITE A,
 PEACHTREE CITY, GA 30269

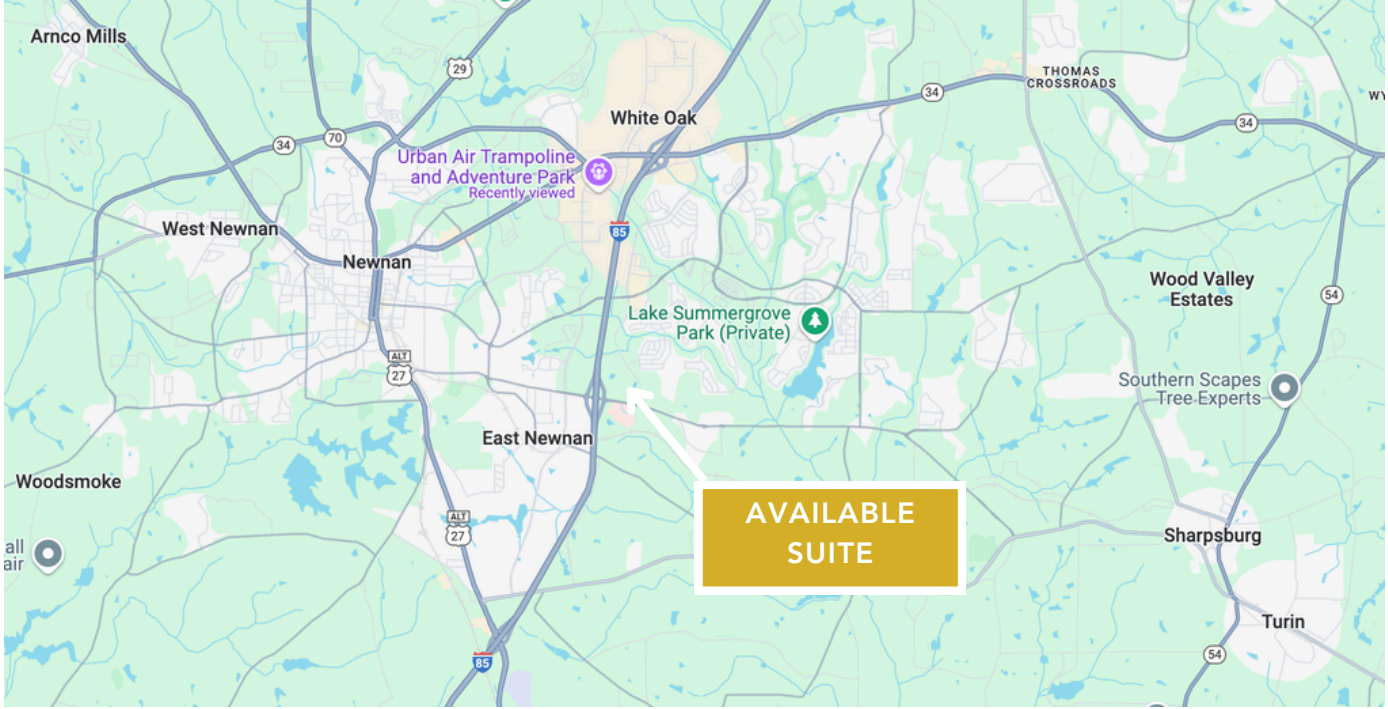
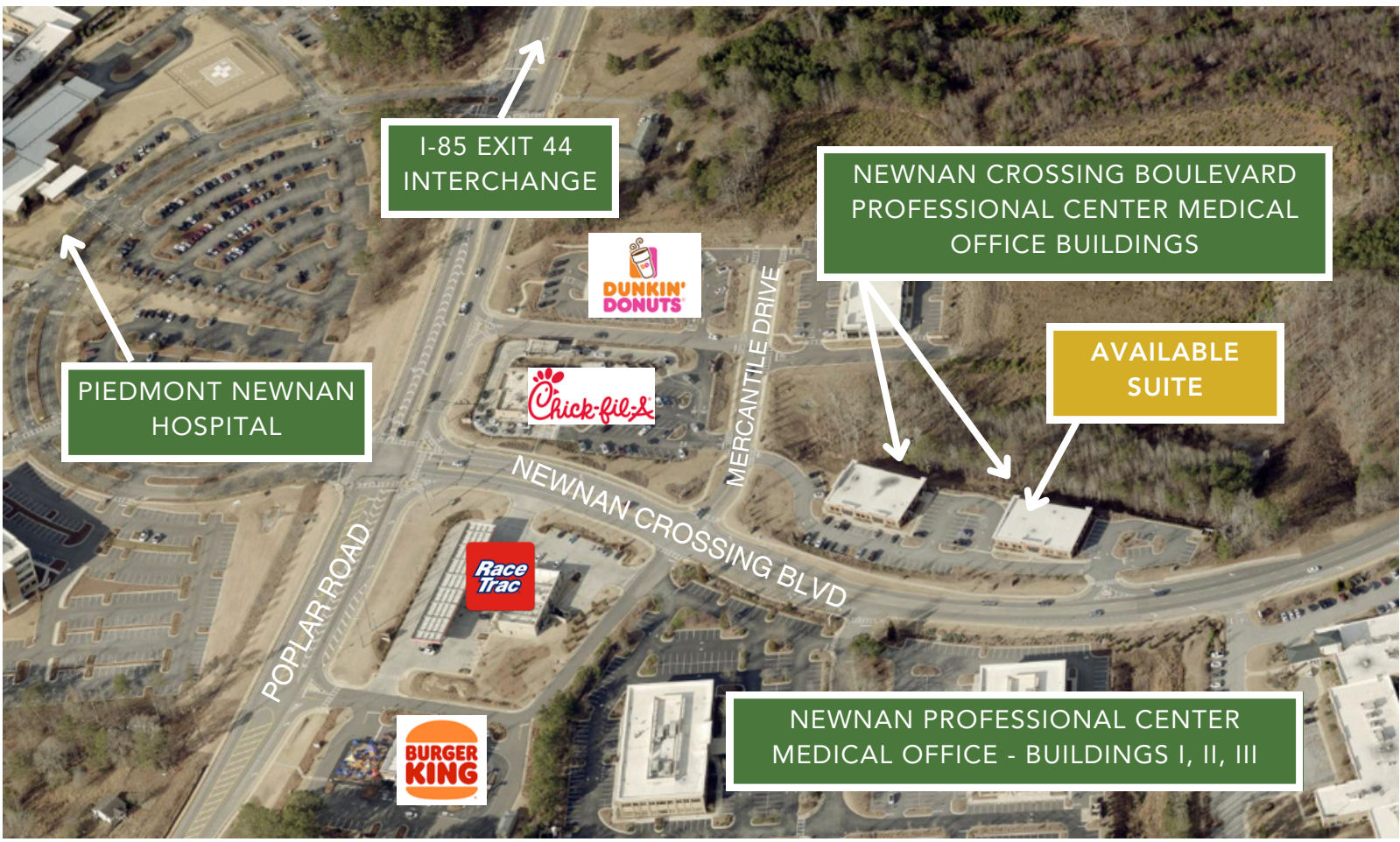


SOUTHTREE

COMMERCIAL REAL ESTATE

PROXIMITY MAP

2080 NEWNAN CROSSING BLVD, NEWNAN, GA 30265



BARRY GARNER
 VICE PRESIDENT
 770-294-4027
 bgarner@stcom.us

SEAN RAWSON
 VICE PRESIDENT
 678-920-1222
 srawson@stcom.us

STCOM.US
770-631-0499
**201 PROSPECT PARK, SUITE A,
 PEACHTREE CITY, GA 30269**



BARRY GARNER
VICE PRESIDENT
770-294-4027
bgarner@stcom.us

SEAN RAWSON
VICE PRESIDENT
678-920-1222
srawson@stcom.us



STCOM.US



770-631-0499



**201 PROSPECT PARK, SUITE A,
PEACHTREE CITY, GA 30269**