

# FOR LEASE

## Historic Corner of Selby & Dale

### 614 & 618 Selby Ave, St. Paul, MN 55102



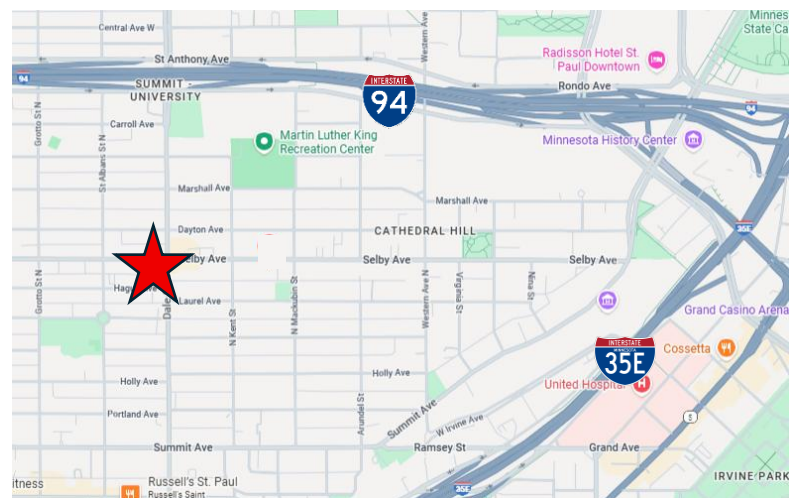
### LISTING DETAILS

- Year Built: 1916
- Building Size: 24,948 SF
- Available Retail Space
  - Suite 614: 965 SF
  - Suite 618: 1,373 SF
- Storage Space: 536-1,251 SF
- Lease Rate: Modified Gross
- Utilities: Gas, Electricity, and Trash are separately metered

### PROPERTY DETAILS

- Corner Retail Space on Selby & Dale
- High Traffic Area
- Large Storefront Windows

### LOCATION



Mark Young

D: 651-233-2435 | M: 651-307-2371

Zac Houle

D: 651-209-0520 | M: 651-248-7567

Joseph Dokken

D: 651-363-3598 | M: 651-395-0948

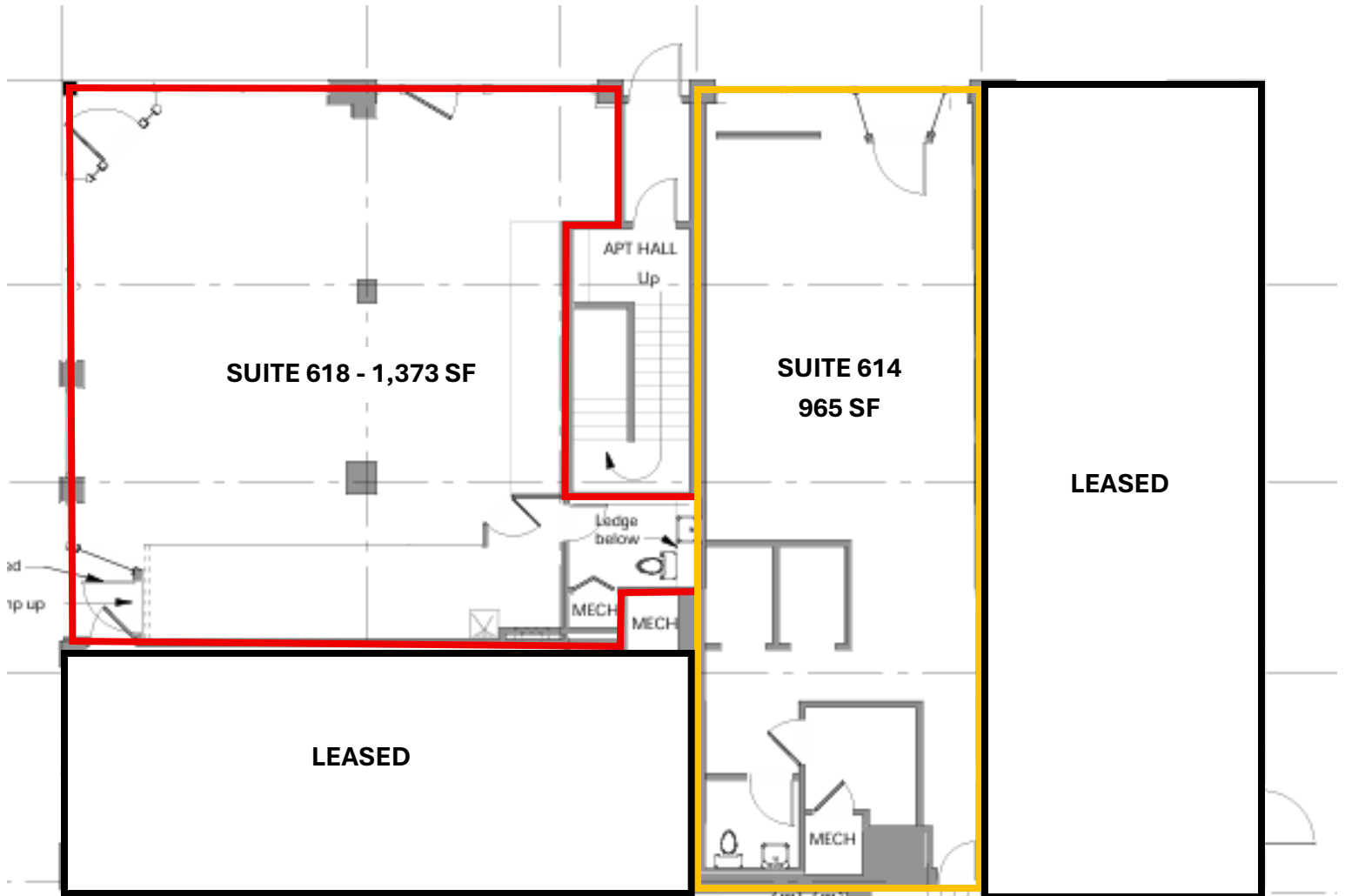
7250 Hudson Boulevard N, Suite 160, Oakdale, MN 55128

[www.crossroadsproperties.net](http://www.crossroadsproperties.net)

**FOR LEASE**

**Historic Corner of Selby & Dale**  
**614 & 618 Selby Ave, St. Paul, MN 55102**

**FLOOR PLAN – SUITES 614 & 618 (965-1,373 SF)**



**CROSSROADS**  
PROPERTIES

Mark Young

D: 651-233-2435 | M: 651-307-2371

Zac Houle

D: 651-209-0520 | M: 651-248-7567

Joseph Dokken

D: 651-363-3598 | M: 651-395-0948

7250 Hudson Boulevard N, Suite 160, Oakdale, MN 55128

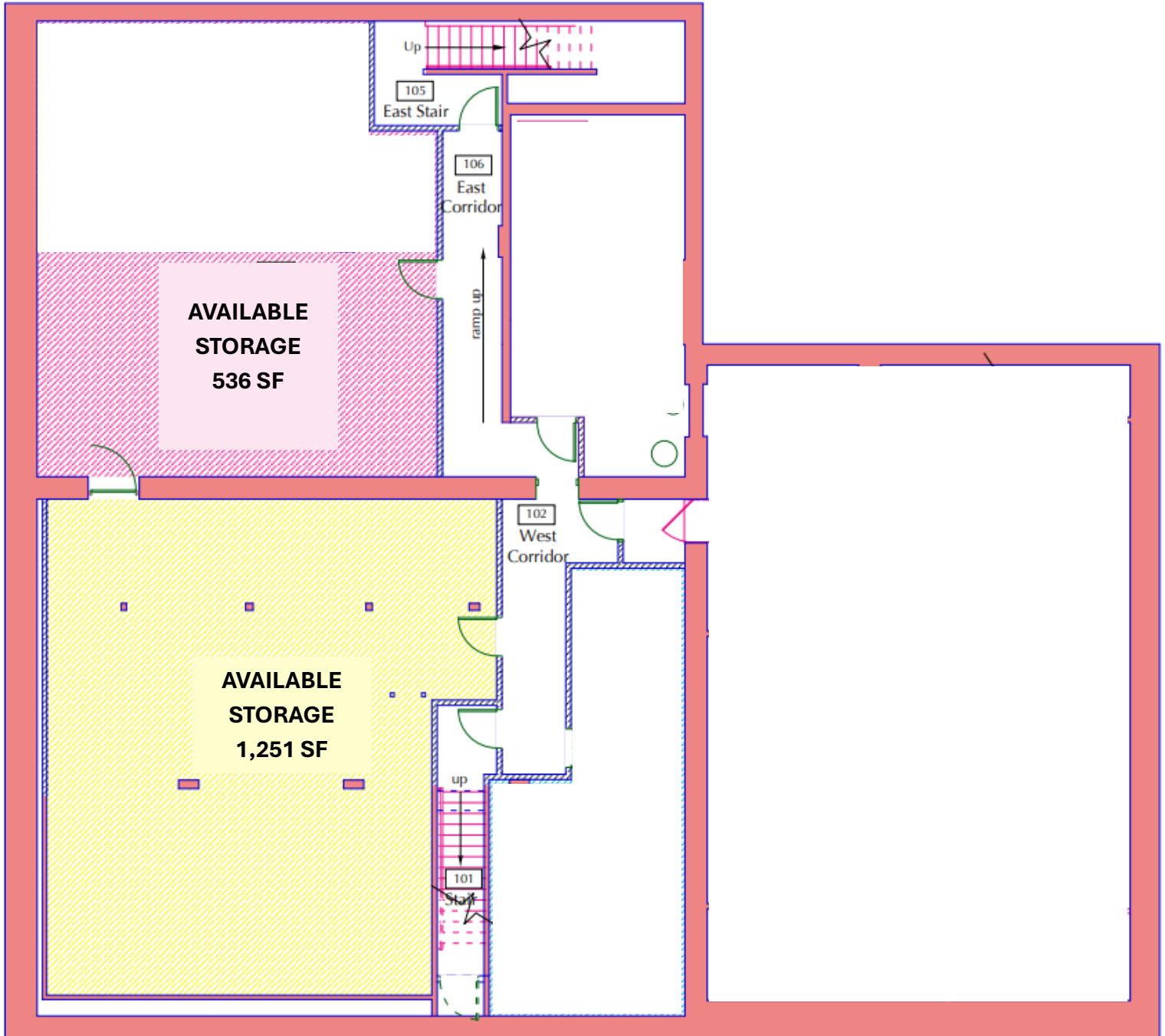
[www.crossroadsproperties.net](http://www.crossroadsproperties.net)

**FOR LEASE**

**Historic Corner of Selby & Dale**

**614 & 618 Selby Ave, St. Paul, MN 55102**

**BASEMENT STORAGE FLOOR PLAN (536-1,251 SF)**



**CROSSROADS**  
PROPERTIES

Mark Young

D: 651-233-2435 | M: 651-307-2371

Zac Houle

D: 651-209-0520 | M: 651-248-7567

Joseph Dokken

D: 651-363-3598 | M: 651-395-0948

7250 Hudson Boulevard N, Suite 160, Oakdale, MN 55128

[www.crossroadsproperties.net](http://www.crossroadsproperties.net)

**FOR LEASE**

**Historic Corner of Selby & Dale**  
**614 & 618 Selby Ave, St. Paul, MN 55102**

**AERIAL VIEW**



**CROSSROADS**  
PROPERTIES

Mark Young

D: 651-233-2435 | M: 651-307-2371

Zac Houle

D: 651-209-0520 | M: 651-248-7567

Joseph Dokken

D: 651-363-3598 | M: 651-395-0948

7250 Hudson Boulevard N, Suite 160, Oakdale, MN 55128

[www.crossroadspropeties.net](http://www.crossroadspropeties.net)