

# CALVIN

18872 & 18952 MACARTHUR BOULEVARD  
IRVINE, CA



**NEWMARK**



**CAMPHOR**  
PARTNERS

# CAVU

## Ceiling And Visibility Unlimited

**Ceiling and Visibility Unlimited** is the ideal flight condition for pilots; the name is an ode to the John Wayne Airport directly adjacent to the project. **CAVU** consists of two four-story office buildings totaling an approximate 100,000 SF. **CAVU** underwent a complete overhaul and now features brand new building infrastructure including but not limited to new elevator cabs, HVAC systems and common areas. Floors two through four in both buildings feature a bright and welcoming elevator lobby with natural light. **CAVU** also offers a free-surface parking lot which makes the project the ideal office condition for any tenant.



**Multiple  
Signage Opportunities**



**New Elevators and  
Mechanical Systems**



**Free  
Surface Parking**



**Move-In  
Ready Suites**



**Plenty of  
Natural Light**



**Close proximity to  
John Wayne Airport**



MACARTHUR BLVD.

DOUGLAS

# CAVn

18872 & 18952 MACARTHUR BOULEVARD  
IRVINE, CA









## 18872 MACARTHUR BOULEVARD

Irvine, California

Suite	RSF	Available	Notes	Video Tours
200	3,833	Vacant	Featuring 6 offices, conference room, open area and kitchen.	

## 18952 MACARTHUR BOULEVARD

Irvine, California

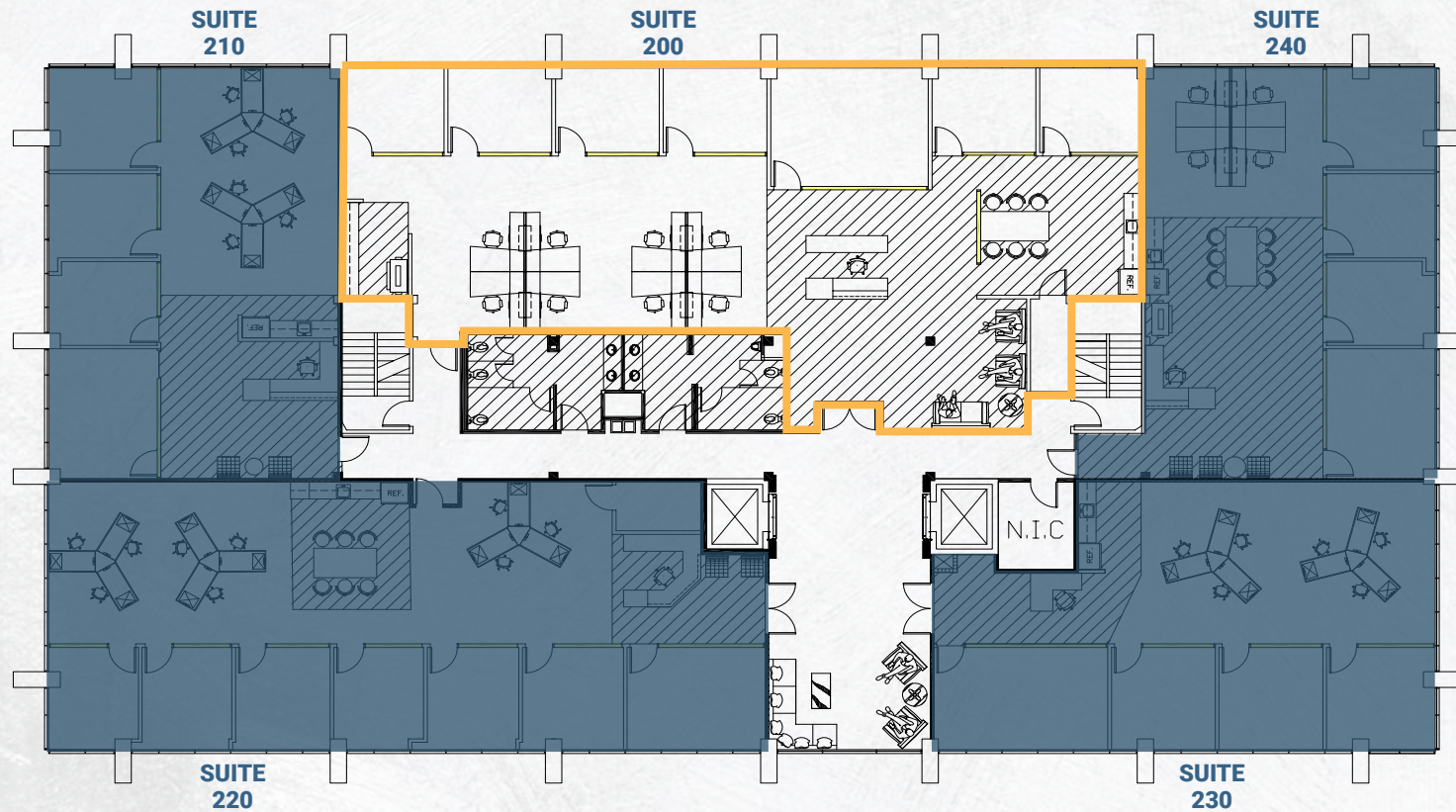
Suite	RSF	Available	Notes	Video Tours
4D	1,986	Vacant	Featuring 3 offices, conference room, kitchenette and open area	

18872 & 18952  
MACARTHUR

# 2nd FLOOR

## 18872 MACARTHUR BOULEVARD

Irvine, California



Suite 200

3,833 SF



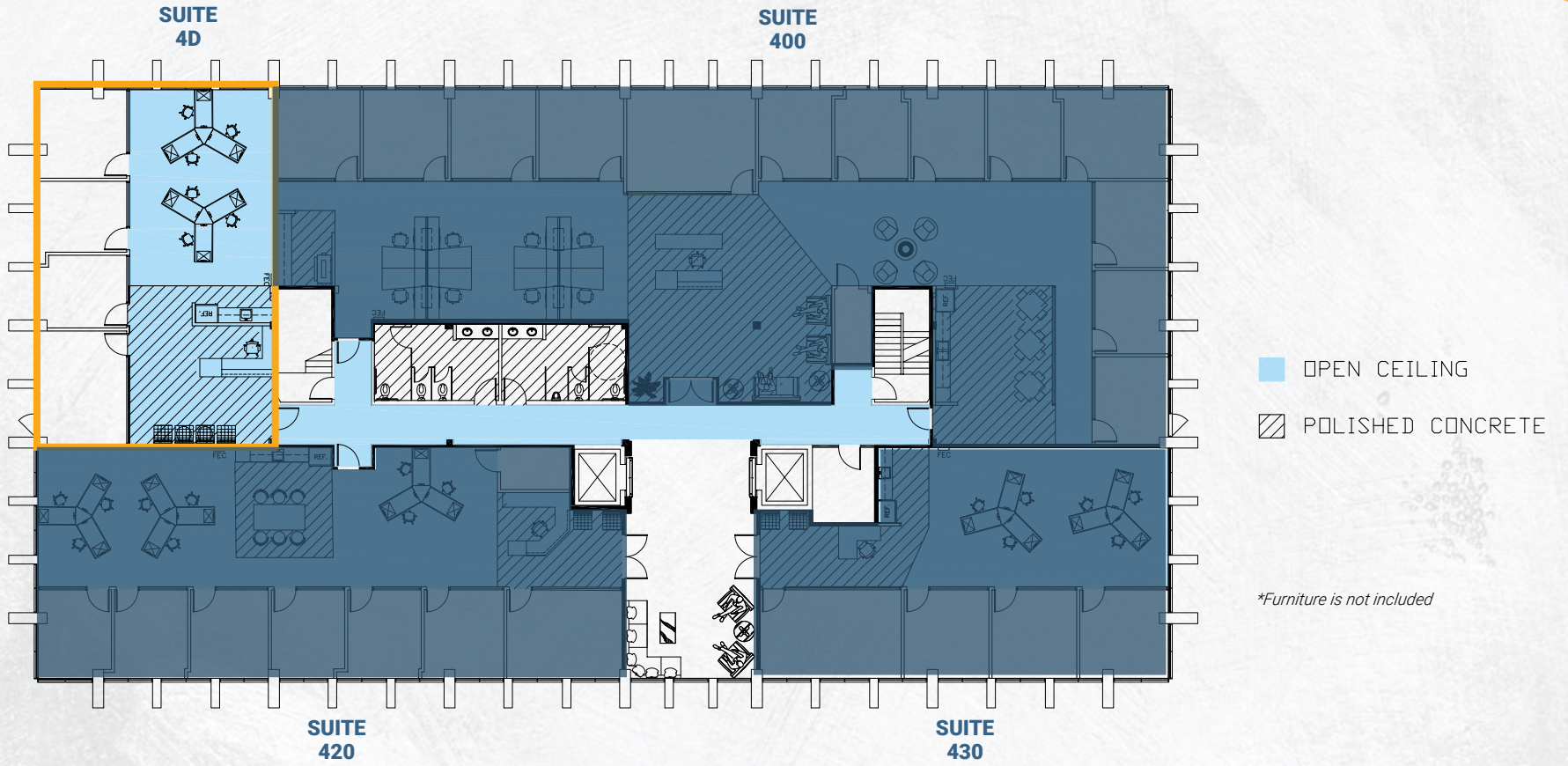
- GLASS WALL
- POLISHED CONCRETE

*\*Furniture is not included*

# 4th FLOOR

## 18952 MACARTHUR BOULEVARD

Irvine, California



Suite 4D

1,986 RSF



# NEIGHBORING AMENITIES



INTERSTATE CALIFORNIA 405

**TEN** Bosscat  
ASIAN BISTRO  
kitchen & libations

**BENNY MARYS**  
A DIZ  
BETTER TOGETHER

**JOHN WAYNE AIRPORT**  
ORANGE COUNTY

*Hampton Inn & Suites*  
by HILTON

**TRADE**  
MARKET PLACE

*Bistango*

*CAVU*

**BRUEGGER'S BAGELS**  
BAKED FRESH  
Totally completely obsessed with freshness™

**HYATT REGENCY**

**WELLS FARGO**

CAMPUS DR

VON KARMAN AVE

JAMBOREE RD

**STAPLES**

**CLASSIC**

**THE PACIFIC CLUB**

twenty eight

MACARTHUR BLVD

**BENIHANA**  
THE JAPANESE STEAKHOUSE

**BANK OF AMERICA**

DOVE ST

**MOULIN**  
RETRO · EPICURE · GAZE

CALIFORNIA 73

NEWMARK

# CALVIN

18872 & 18952 MACARTHUR BOULEVARD  
IRVINE, CA

**Richard P. Sung**

*Senior Managing Director*

t 949-608-2178

m 408-205-3412

richard.sung@nmrk.com

CA RE Lic. #01953211

**Andrew Robben**

*Senior Managing Director*

t 949-608-2073

m 949-400-5855

andrew.robben@nmrk.com

CA RE Lic. #01372891

18401 Von Karman Avenue, Suite 150, Irvine, CA 92612

**nmrk.com**

Corporate License #01355491

The information contained herein has been obtained from sources deemed reliable but has not been verified and no guarantee, warranty or representation, either express or implied, is made with respect to such information. Terms of sale or lease and availability are subject to change or withdrawal without notice.

**NEWMARK**



**CAMPBOR**  
PARTNERS