



5024 CAMPBELL BOULEVARD

BALTIMORE, MARYLAND 21236

FOR
SUBLEASE



MACKENZIE

COMMERCIAL REAL ESTATE SERVICES, LLC

PROPERTY OVERVIEW

HIGHLIGHTS:

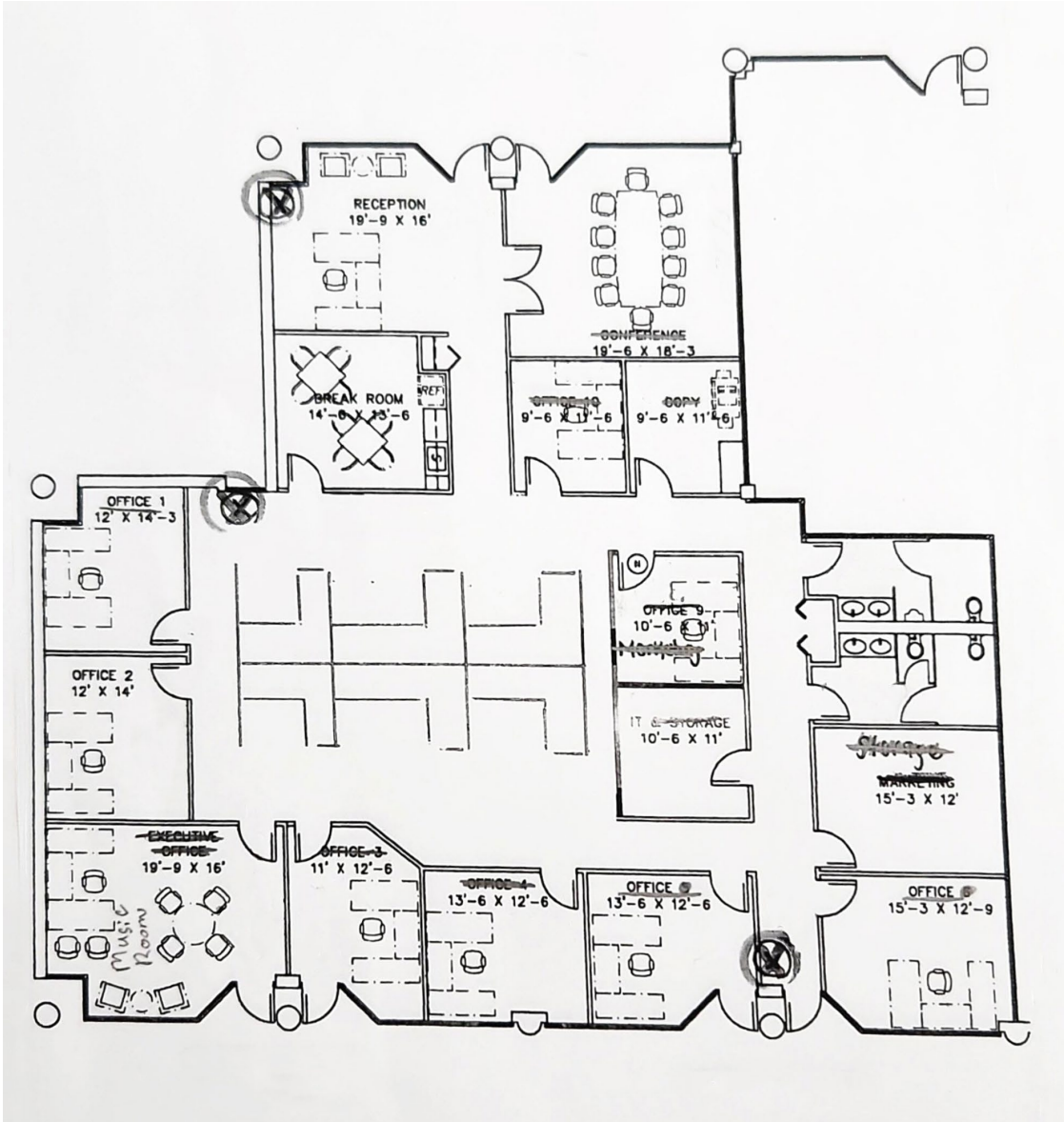
- End unit space available for sublease with visibility from I-95
- Direct access to I-95 and I-695
- Convenient access to Downtown Baltimore, Towson, Harford County, and the Port of Baltimore
- High visibility - 24,291 AADT (Campbell Blvd)
- Located in the White Marsh Business Center, minutes from White Marsh Mall, The Avenue at White Marsh, and Nottingham Commons
- Adjacent to Johns Hopkins Physician Pavilion and Kaiser Permanente
- 120 surface parking spaces
- Close to retail, dining, and medical hubs



AVAILABLE:	4,710 SF ±
SUBLEASE THRU:	10/31/2029
YEAR BUILT:	1986
PARKING:	3.53/1,000 SF
ZONING:	BM (BUSINESS MAJOR)
RENTAL RATE:	NEGOTIABLE



FLOOR PLAN:



LOCAL BIRDSEYE



43

SITE

White Marsh Mall

- Buffalo Wild Wings
- Chick-fil-A
- Macy's
- Dave & Buster's
- Popeyes
- Olive Garden
- Boscov's
- Cinnabon

THE AVENUE at White Marsh

- Starbucks
- Ulta
- Nike Clearance Store
- AMC Theatres
- Barnes & Noble
- Banditos Bar & Kitchen
- The Local

Avenue Grand
SMART. STYLISH. EXCLUSIVELY GRAND.

HONEYGO BLVD

SANDPIPER CIR

TOWN CENTER DR

INTERSTATE 95



DEMOGRAPHICS

2025

RADIUS:

1 MILE

3 MILES

5 MILES

RESIDENTIAL POPULATION



7,591

92,581

218,735

DAYTIME POPULATION



12,725

87,406

185,717

AVERAGE HOUSEHOLD INCOME



\$108,362

\$119,242

\$110,919

NUMBER OF HOUSEHOLDS



3,242

36,094

86,775

MEDIAN AGE

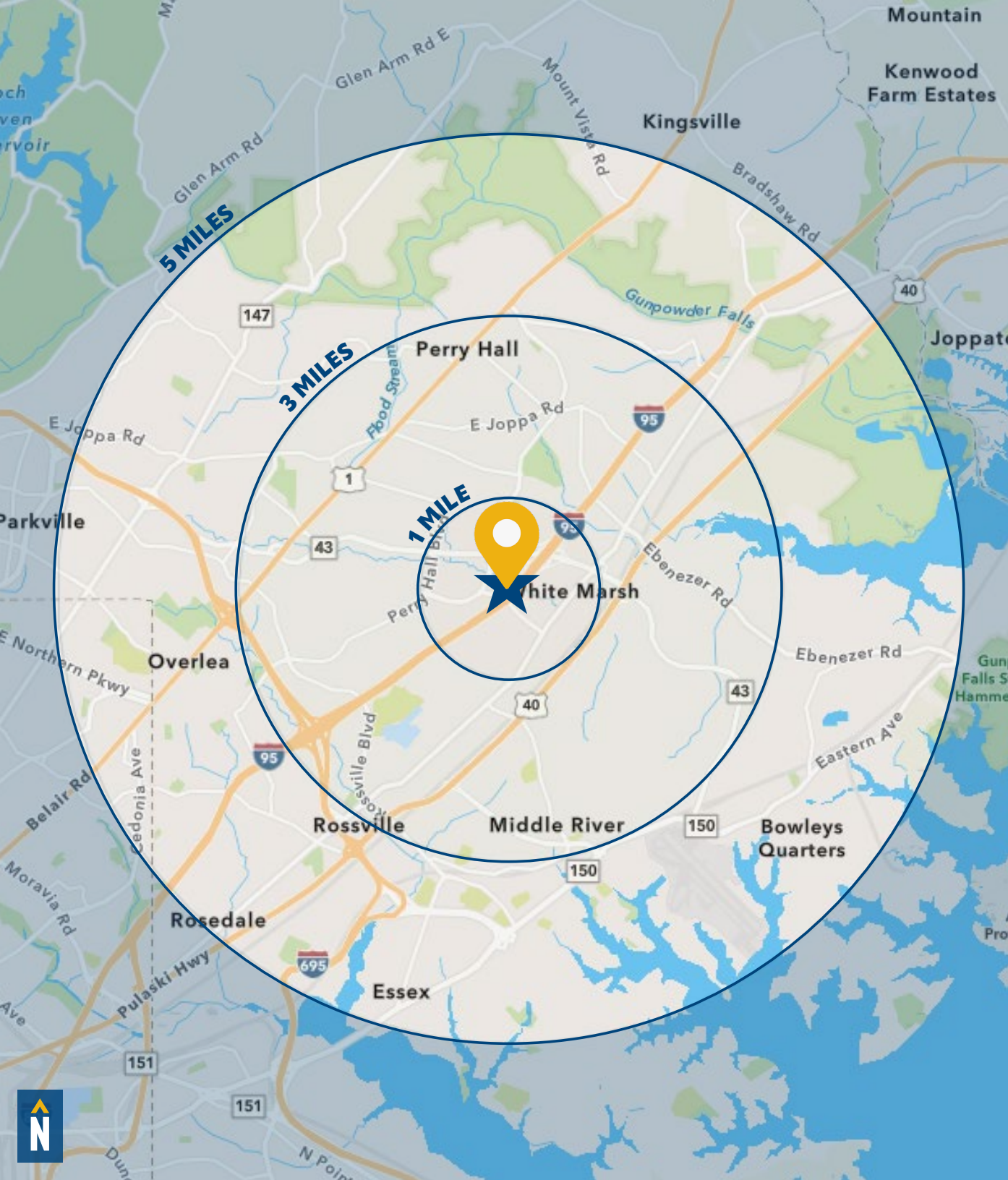


38.2

39.7

40.5

[FULL DEMOS REPORT](#)



FOR MORE INFO CONTACT:



JOE BRADLEY

SENIOR VICE PRESIDENT & PRINCIPAL

410.494.4892

JBRADLEY@mackenziecommercial.com



HENSON FORD

VICE PRESIDENT

410.494.6657

HFORD@mackenziecommercial.com



MACKENZIE

COMMERCIAL REAL ESTATE SERVICES, LLC

410-821-8585

2328 W. Joppa Road, Suite 200

Lutherville, MD 21093

OFFICES IN: ANNAPOLIS, MD BALTIMORE, MD BEL AIR, MD COLUMBIA, MD LUTHERVILLE, MD CHARLOTTESVILLE, VA

www.MACKENZIECOMMERCIAL.com



VISIT **PROPERTY PAGE** FOR MORE INFORMATION.

No warranty or representation, expressed or implied, is made as to the accuracy of the information contained herein, and same is submitted subject to errors, omissions, change of price, rental or other conditions, withdrawal without notice, and to any specific listing conditions imposed by our principals.