



1884
 QUEEN STREET EAST
 TORONTO, ON



High Profile Retail
For Sublease

Corner location at the
 busiest intersection
 in the Beaches

Mary Mowbray*
 Senior Vice President
 Retail Group
 +1 416 643 3740
 Mary.Mowbray@colliers.com

Daniella Fortino
 Senior Sales Representative
 Retail Group
 +1 416 643 3482
 Daniella.Fortino@colliers.com

*Sales Representative

Property Overview

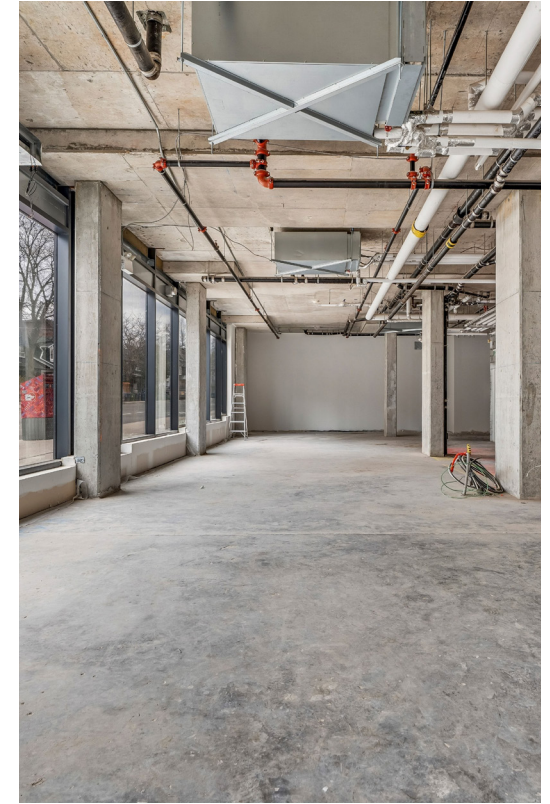
High profile retail space on the corner of Queen Street East and Woodbine Avenue at one of the most prominent locations in the Beaches.

Entrances from Queen and from Woodbine, with exposure on both streets. Premises feature high ceilings and large windows wrapping the entire exterior. Easy loading from rear of building.

Suitable for all types of retail stores, fitness and wellness, personal services, financial services, medical and dental, and any use requiring profile, visibility and easy access.

All building systems are brand new and space is in clean shell condition.

Long term sublease opportunity with a credit worthy Sublandlord.



Address 1884 Queen Street East, Toronto, ON

Rentable Area 3,075 SF

Available Immediately

Term To October 30, 2032

Asking Lease Rate Contact Listing Agents

Additional Rent \$15.77 PSF (2024)



Property Highlights



Prime Flagship Location

High profile, prominent corner in the Beaches



Signage Opportunity

Unique signage and branding opportunities available



Easy Access

Easily accessible space with entrances on both Queen & Woodbine and rear loading area



High Quality Space

Clean shell condition space with high ceilings and brand new building systems



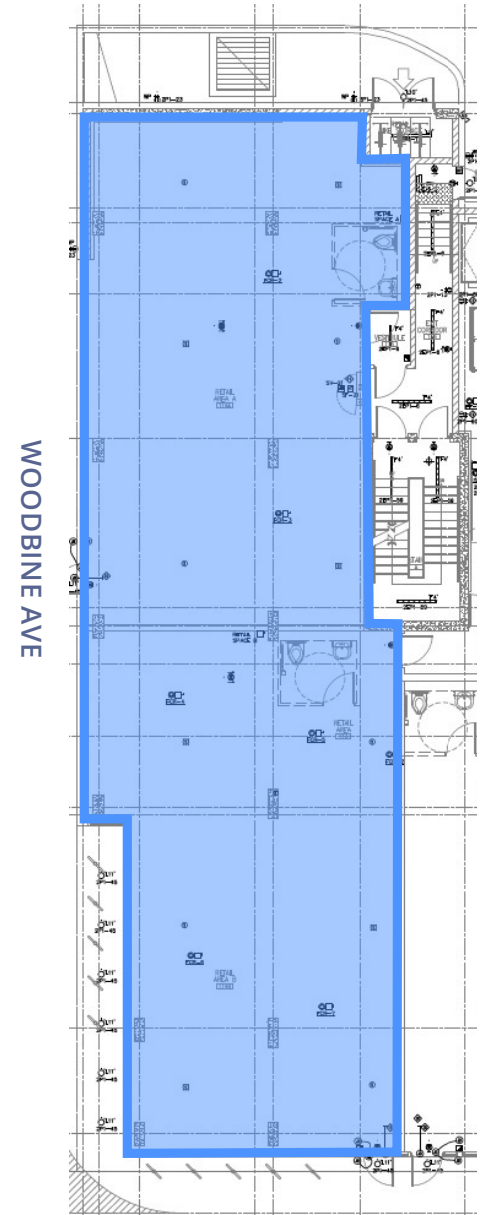
High Visibility

Exposure on both Queen & Woodbine with large windows wrapping the entire exterior



Suitable for Many Uses

Ideal for all types of retail, fitness and wellness, personal services, medical and dental



WOODBINE AVE

QUEEN ST. E

Property Photos





Location

Median Household Income

1 KM Radius: \$137,134

2 KM Radius: \$125,716

2025-2035 Population Growth

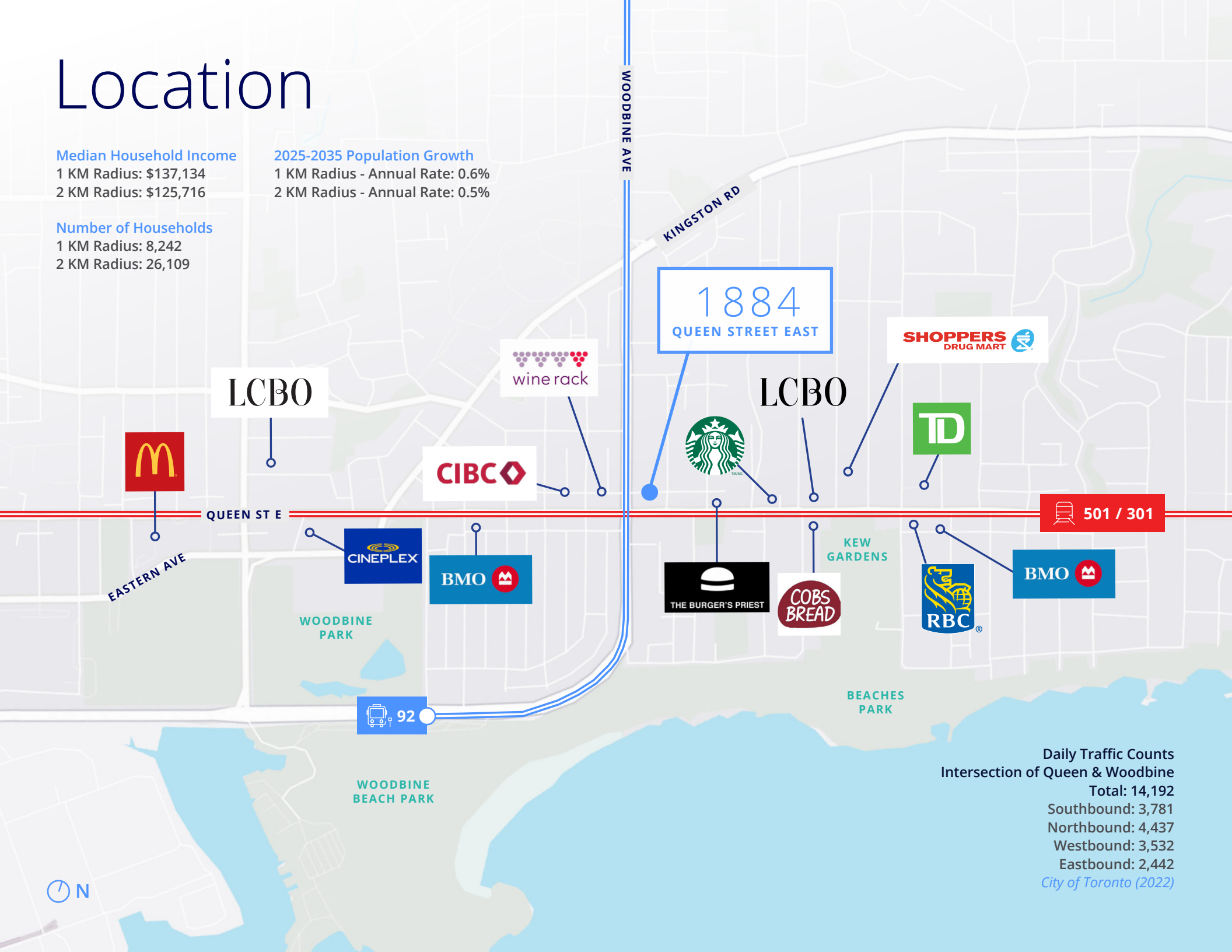
1 KM Radius - Annual Rate: 0.6%

2 KM Radius - Annual Rate: 0.5%

Number of Households

1 KM Radius: 8,242

2 KM Radius: 26,109



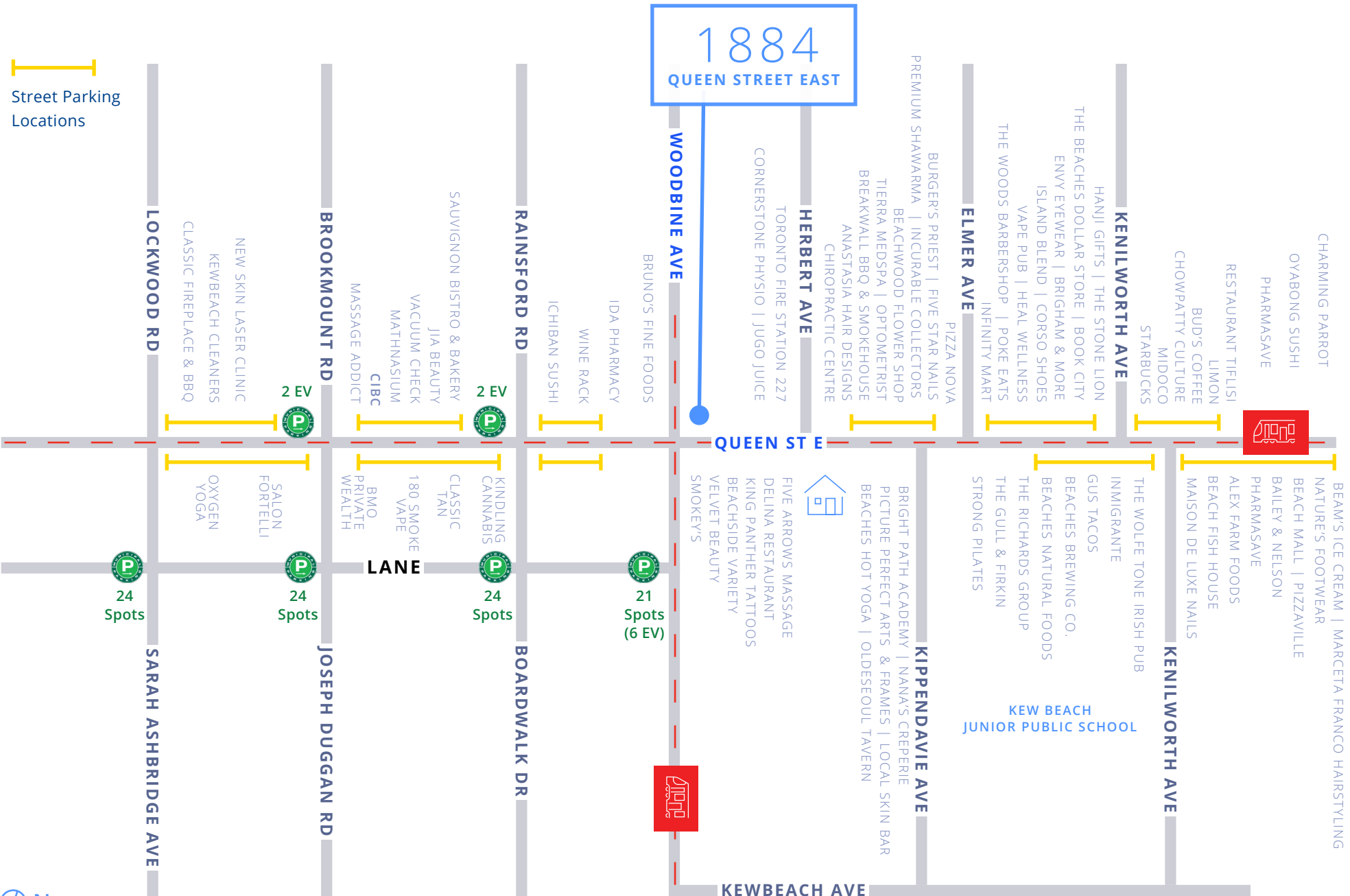
501 / 301

92

Daily Traffic Counts
 Intersection of Queen & Woodbine
 Total: 14,192
 Southbound: 3,781
 Northbound: 4,437
 Westbound: 3,532
 Eastbound: 2,442
 City of Toronto (2022)

Location

Street Parking Locations





Colliers

1884

QUEEN STREET EAST

TORONTO, ON

Mary Mowbray*

Senior Vice President

Retail Group

+1 416 643 3740

Mary.Mowbray@colliers.com

Daniella Fortino

Senior Sales Representative

Retail Group

+1 416 643 3482

Daniella.Fortino@colliers.com

*Sales Representative | Copyright © 2026 Colliers International. This document has been prepared by Colliers International for advertising and general information only. Colliers International makes no guarantees, representations or warranties of any kind, expressed or implied, regarding the information including, but not limited to, warranties of content, accuracy and reliability. Any interested party should undertake their own inquiries as to the accuracy of the information. Colliers International excludes unequivocally all inferred or implied terms, conditions and warranties arising out of this document and excludes all liability for loss and damages arising there from. This publication is the copyrighted property of Colliers international and/or its licensor(s). Copyright © 2026 Colliers Macaulay Nicolls Inc Canada.



[collierscanada.com](https://www.collierscanada.com)