



# 11 WEST 51ST STREET

ROCKEFELLER CENTER SHOPPING DISTRICT

75 ROCKEFELLER  
PLAZA



# premier retail opportunity

Rare opportunity to position your brand within Manhattan's most prestigious retail cluster.

11 West 51st Street offers a rare ground-floor presence surrounded by global flagships, capturing a high-intent audience in a true foot traffic magnet.

# site information

**ADDRESS:** 11 West 51st Street  
At The Foot of Rockefeller Center  
BASE OF THE JEWEL HOTEL  
(135 ROOMS)

**ASKING RENT:** Upon Request

**SIZE:** 4,000 Square Feet  
Ground Floor, No Basement

**POSSESSION:** Immediate

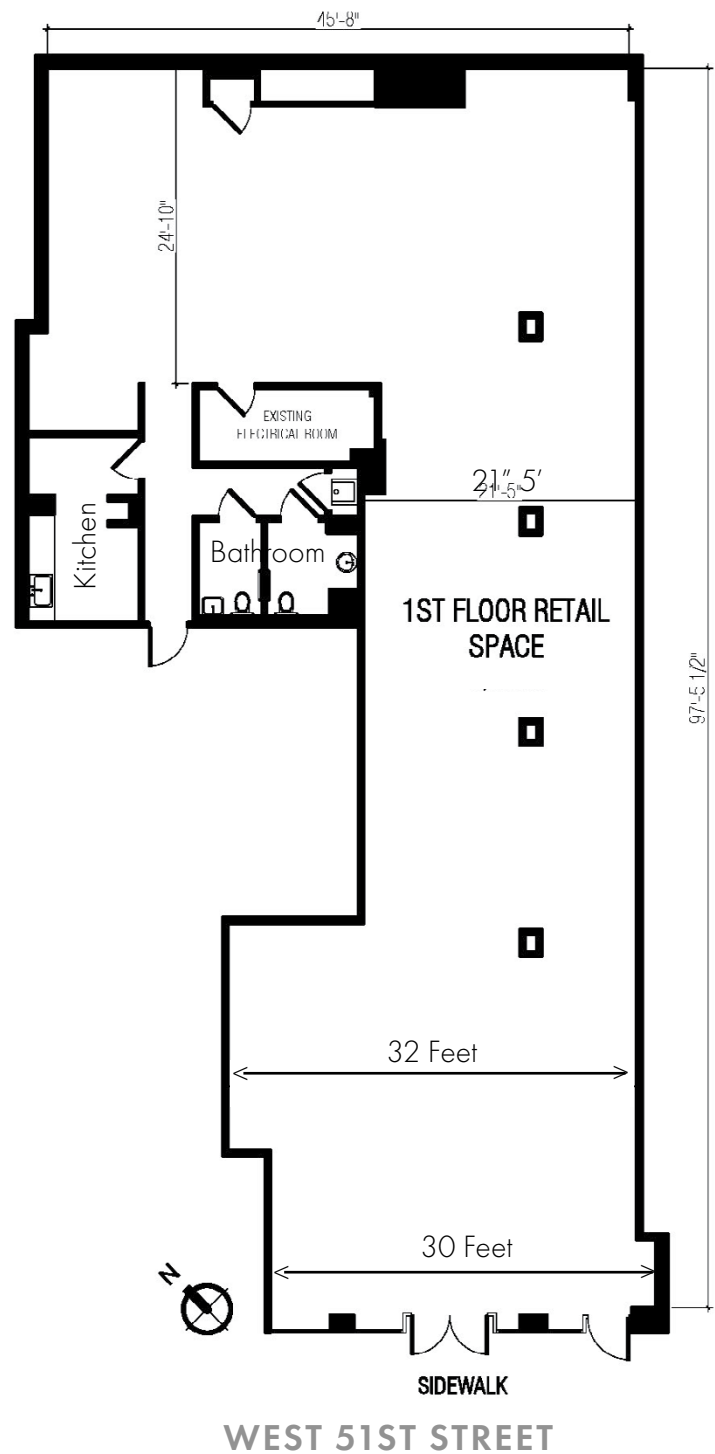
**CONDITION:** White Box With 2 Bathrooms

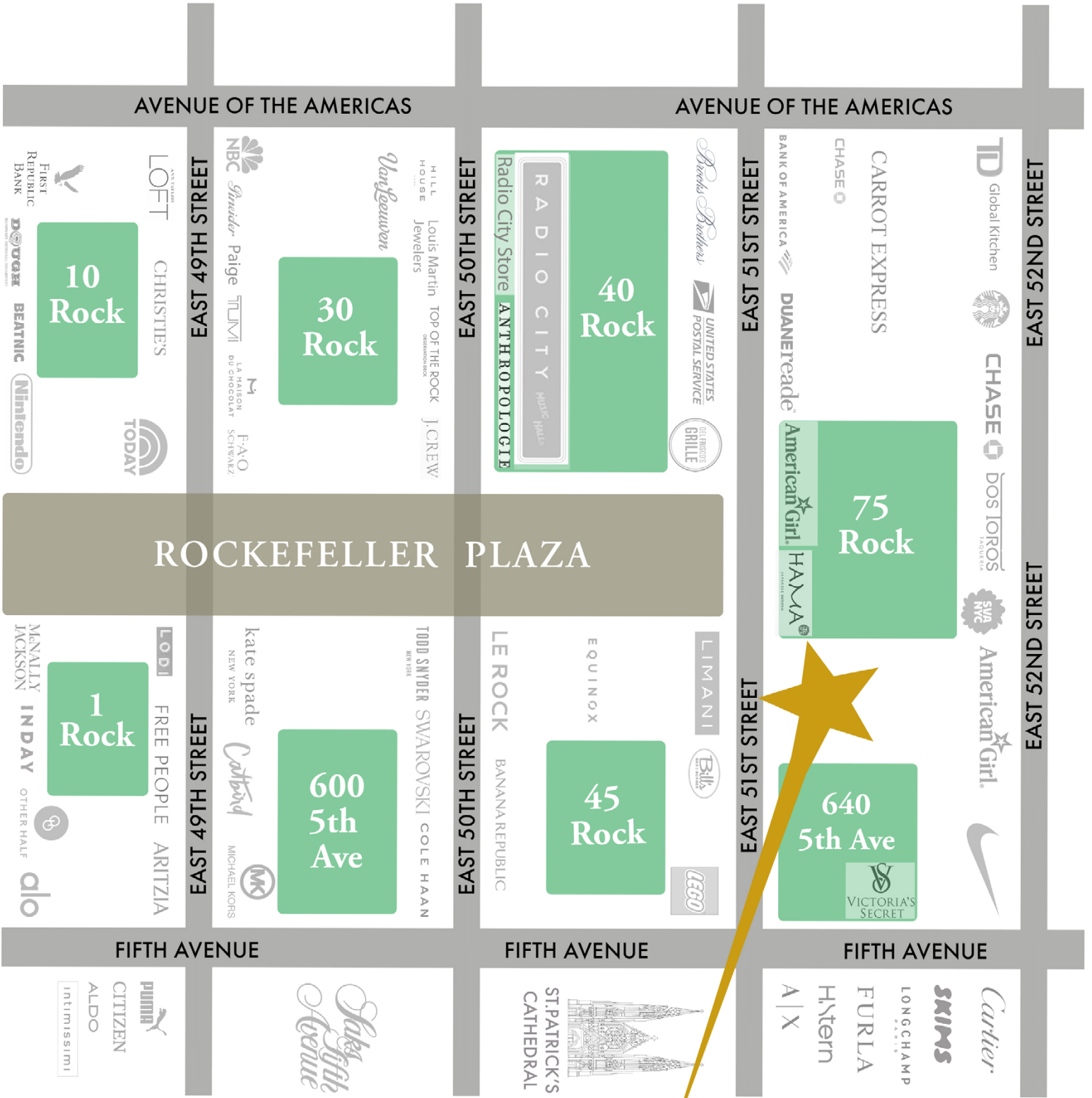
**USE RESTRICTIONS:** Venting

**TERM:** 10+ Years

**CEILING HEIGHTS:** 11" 9'

**FRONTAGE:** 30 Feet





**11 WEST  
51ST STREET**  
ROCKEFELLER CENTER DISTRICT  
BASE OF THE JEWEL HOTEL  
(135 ROOMS)

All information provided herein is deemed reliable but is not guaranteed and should be independently verified. Prices, availability, and property details are subject to change without notice. No representation or warranties, express or implied, are made as to the accuracy of this information. Prospective tenants should conduct their own due diligence, including but not limited to measurements, zoning, and legal compliance. Broker represents the unit exclusively unless otherwise stated in writing.



# nearby retail restaurants & activity

**FLAGSHIP ROW ADJACENCY** Directly next to the American Girl New York flagship and steps from Nintendo NY, LEGO Store, and FAO Schwarz, ensuring a constant stream of high-spending family and tourist traffic.

**LUXURY CORRIDOR INTEGRATION** Strategically located near Saks Fifth Avenue, St. Patrick's Cathedral, and the high-end boutiques of 5th Avenue, bridging the gap between mass-market tourism and luxury retail.

**THE HUB OF MIDTOWN ACTIVITY** Immediate proximity to Radio City Music Hall and Top of the Rock, securing 365-day-a-year visibility beyond the peak holiday surge.

**EXCEPTIONAL FRONTAGE** High-visibility glass frontage at the base of The Jewel Hotel, capturing both hotel guests and the massive pedestrian volume of the 51st Street corridor.



# CONTACT

---

## **JONATHAN KERSHNER**

DIRECTOR

[Jkershner@normanbobrow.com](mailto:Jkershner@normanbobrow.com)

O: 212-682-9714

M: 201-546-4656

## **NORMAN BOBROW**

PRESIDENT

[Nbobrow@normanbobrow.com](mailto:Nbobrow@normanbobrow.com)

O: 212-682-9790



Norman Bobrow & Co., Inc., Real Estate Services, 488 Madison Avenue, 19th Floor, New York, NY 10022

All information provided herein is deemed reliable but is not guaranteed and should be independently verified. Prices, availability, and property details are subject to change without notice. No representation or warranties, express or implied, are made as to the accuracy of this information. Prospective tenants should conduct their own due diligence, including but not limited to measurements, zoning, and legal compliance. Broker represents the unit exclusively unless otherwise stated in writing.