



# 890 West Pender Street

// FOR LEASE

# The Opportunity at 890 West Pender

890 West Pender is located on the southeast corner of Pender and Hornby Streets in the heart of Downtown Vancouver's financial district. Situated in the bustling downtown area, tenants can easily access a variety of restaurants, shops, and transportation options, making it a convenient choice for businesses seeking a vibrant urban setting.



Proximity to Transit



Dog Friendly



Secured Bike Storage



Storage Lockers



End of Trip Facilities



Bookable Boardroom





AVAILABILITY

At a Glance

Unit	Size (SF)	Availability
720	~3,515 SF	Immediate
710	~ 825 SF	Immediate
600	~9,297 SF	Immediate
310	~3,195 SF	Immediate

*Can be combined for ~4,336 SF.*

**Basic Rent:** Contact listing agents

**Additional Rent:** \$20.42 PSFPA (2026 est.)



## Unit 720

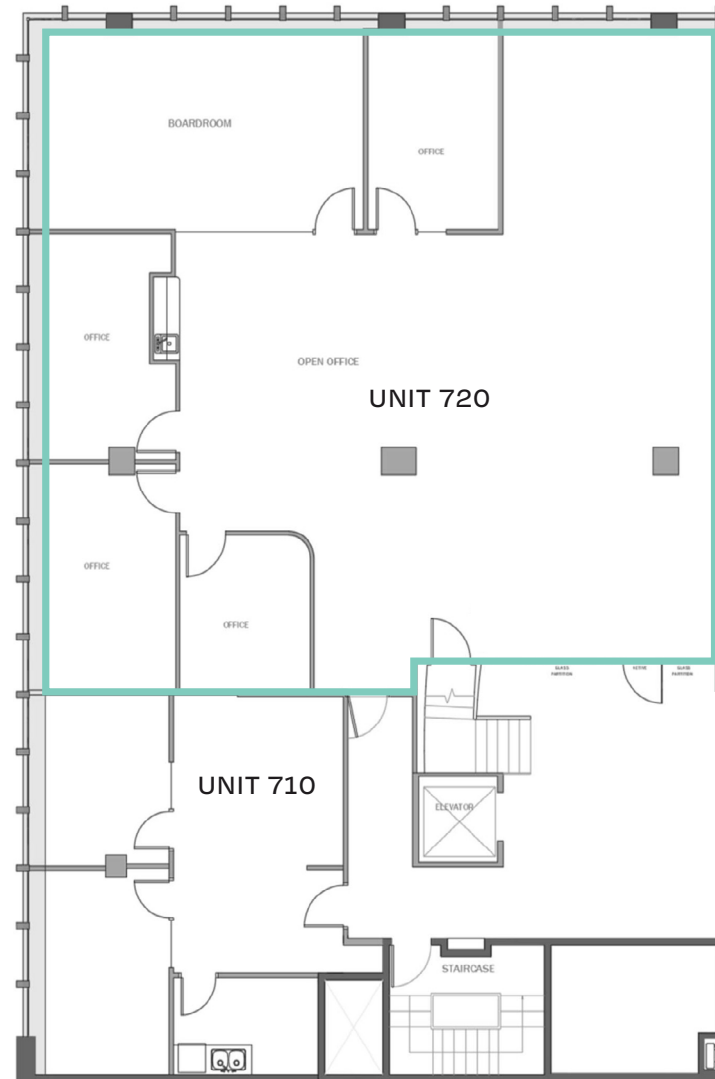
**Size** ~3,515 SF

**Basic Rent** Contact Agents

**Additional Rent** \$20.42 PSFPA (2026 est.)

**Availability** Immediate

Improved office space featuring open workspace, boardroom, and private offices/meeting rooms. Can be combined with contiguous unit for 4,336 SF.



Unit 720 & 710 can be combined for ~4,336 SF



VIRTUAL TOUR



## Unit 710

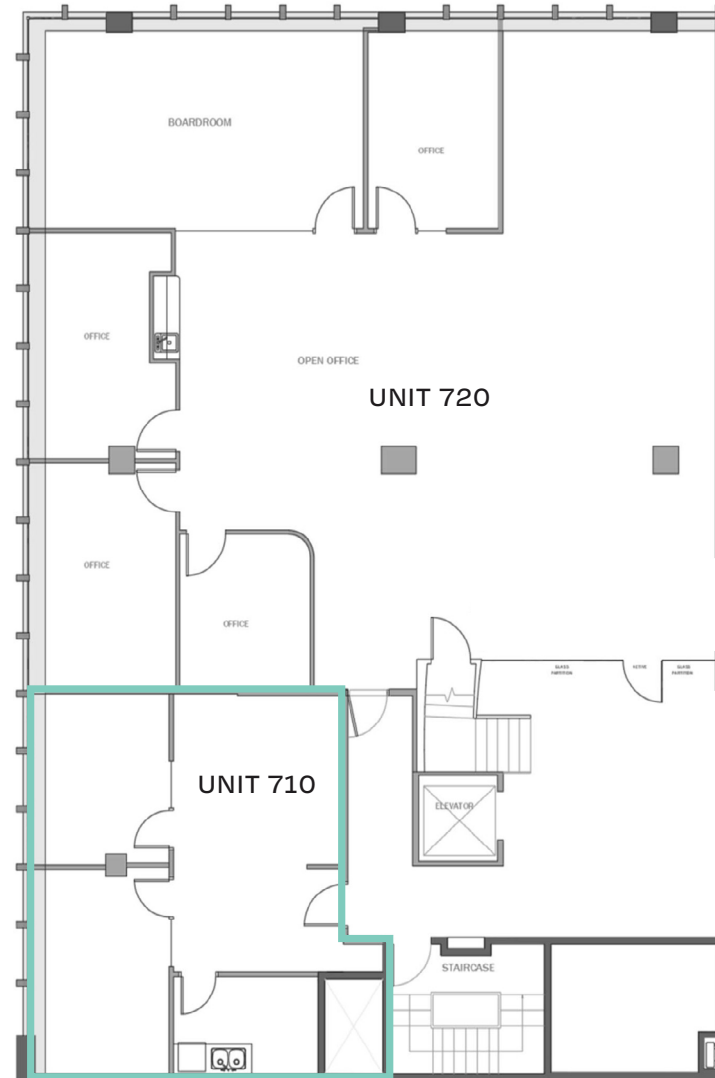
**Size** ~ 825 SF

**Basic Rent** Contact Agents

**Additional Rent** \$20.42 PSFPA (2026 est.)

**Availability** Immediate

Improved with two offices, open area, and kitchen. Can be combined with contiguous unit for 4,336 SF.



Unit 720 & 710 can be combined for ~4,336 SF



VIRTUAL TOUR



## Unit 600

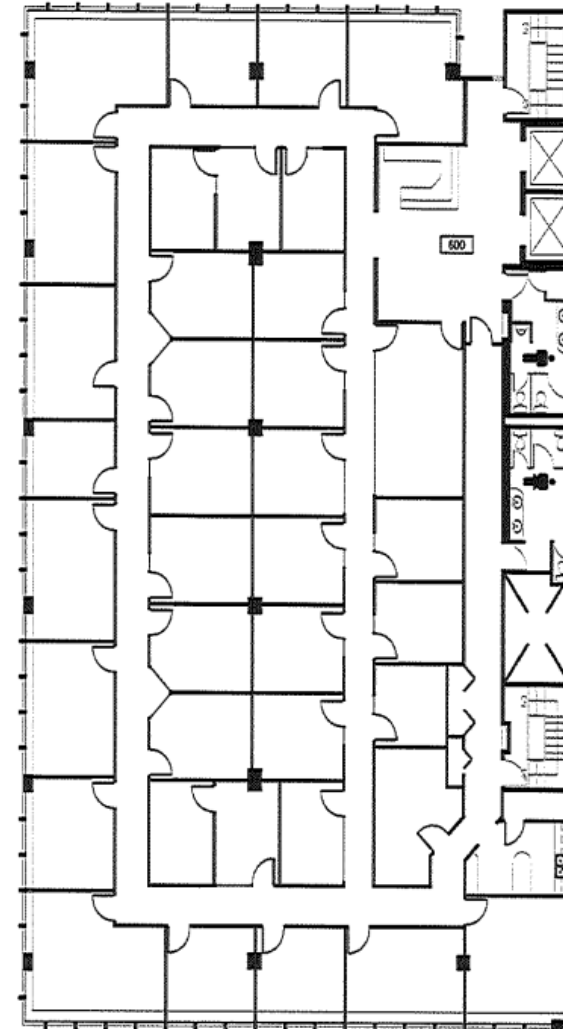
**Size** ~ 9,297 SF

**Basic Rent** Contact Agents

**Additional Rent** \$20.42 PSFPA (2026 est.)

**Availability** Immediate

Full floor opportunity featuring a heavy build-out with many private offices, kitchen, and direct elevator access. Landlord turnkey available.





## Unit 310

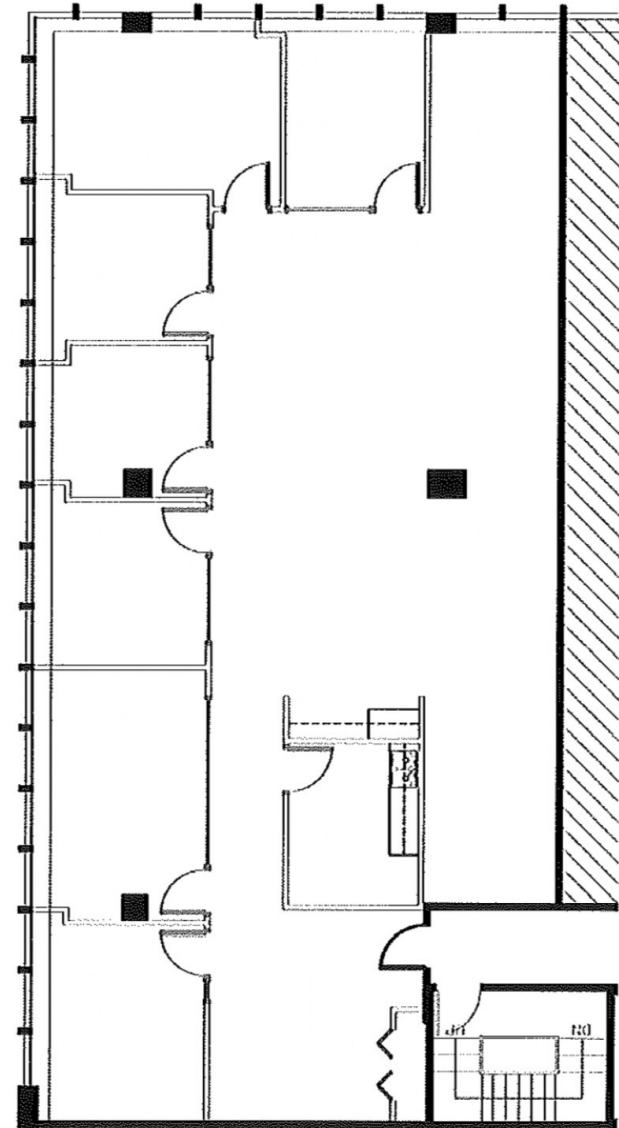
**Size** ~3,195 SF

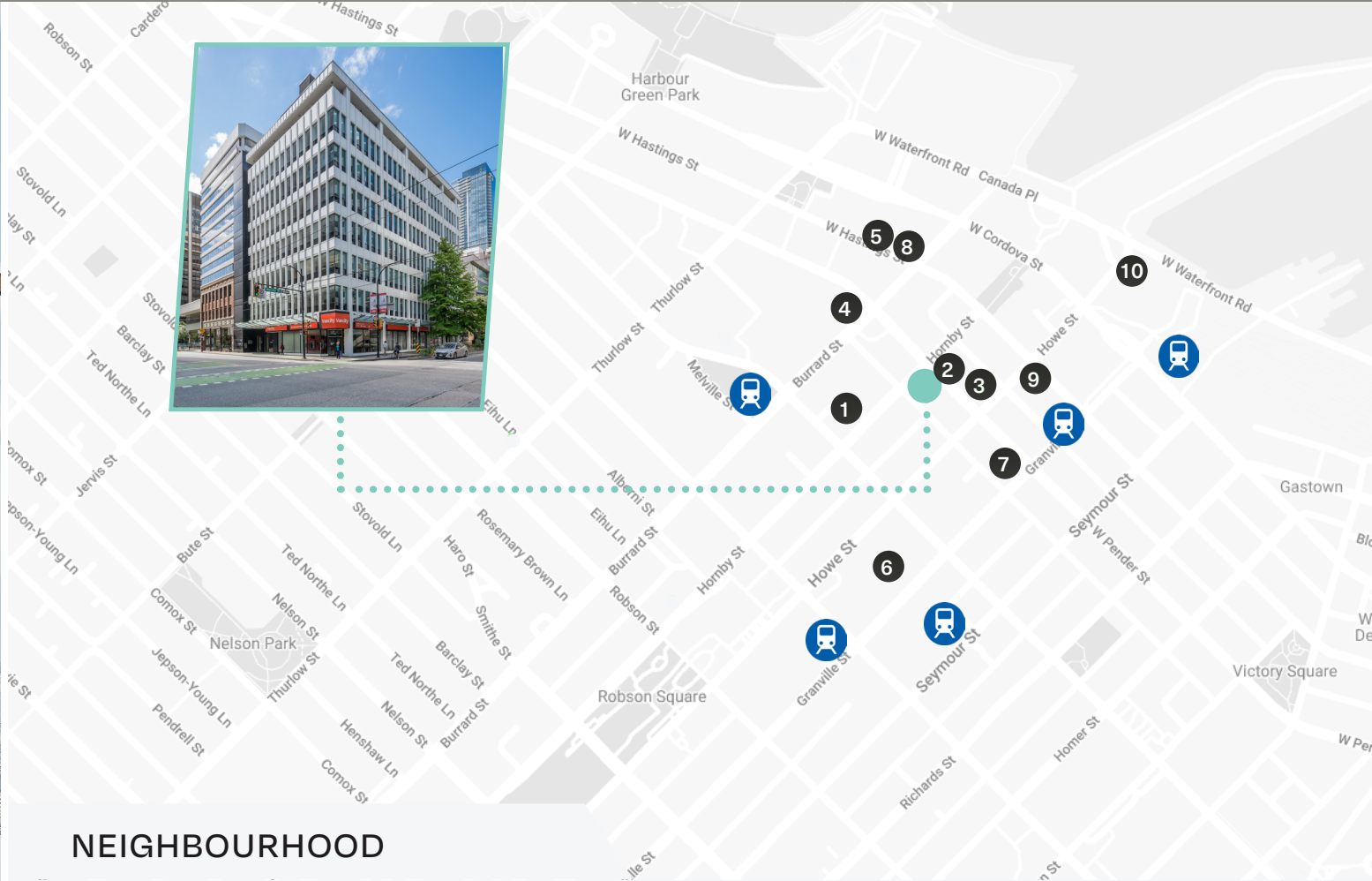
**Basic Rent** Contact Agents

**Additional Rent** \$20.42 PSFPA (2026 est.)

**Availability** Immediate

Southwest corner featuring 6 private offices, meeting room, kitchen, reception area, file room, and large open area. Move in ready.





## NEIGHBOURHOOD

890 West Pender is located on the southeast corner of Pender and Hornby Streets in the heart of Downtown Vancouver's financial district. All major bus routes, Skytrain and the West Coast Express are located within a short walk. The shops and services of Pacific Centre and Bentall Centre are also conveniently close.

- |                     |                        |
|---------------------|------------------------|
| 1. Alouette Bistro  | 6. CF Pacific Centre   |
| 2. Dahlia           | 7. Starbucks           |
| 3. Hydra Estiatorio | 8. Brass Fish Tavern   |
| 4. JOEY Bentall One | 9. Breka Bakery & Café |
| 5. Nightingale      | 10. Miku               |



TRANSIT SCORE

100



WALK SCORE

98



BIKE SCORE

80



For more information, please contact:

## Willow King

Personal Real Estate Corporation

ASSOCIATE VICE PRESIDENT

+1 604 210 2150

[willow@floorspace.ca](mailto:willow@floorspace.ca)

## Robin Macdonald

SENIOR ASSOCIATE

+1 604 617 1445

[robin@floorspace.ca](mailto:robin@floorspace.ca)

---

## FLOORSPACE

900 West Hastings St., Suite 520

Vancouver, BC

V6C 1E5

[www.floorspace.ca](http://www.floorspace.ca)

This document has been prepared by Floorspace Commercial Inc. for advertising and general information only. All information contained herein is from sources we deem reliable, and we have no reason to doubt its accuracy; however, no guarantee or responsibility is assumed thereof, and it shall not form any part of future contracts. Property information is submitted subject to errors and omissions and all information should be carefully verified. Any interested party should undertake their own inquiries as to the accuracy of the information. All measurements quoted herein are approximate. This publication is the copyrighted property of Floorspace Commercial Inc. and/or its licensor(s). Copyright © 2026 Floorspace Commercial Inc.

