

**+/-24.37 ACRES**

**+/-24.37 ACRES FOR SALE**

0 Dogwood Trail  
Harleyville, SC 29448

Neal Walsh | Senior Broker | [nwalsh@cbcatlantic.com](mailto:nwalsh@cbcatlantic.com)  
Trey Davis | Associate | [tdavis@cbcatlantic.com](mailto:tdavis@cbcatlantic.com)



**COLDWELL BANKER  
COMMERCIAL  
ATLANTIC**



## ADDRESS

0 Dogwood Trail  
Harleyville, SC 29448



## PRICE

\$389,920



## TAX ID

037-00-00-113



## ZONING

Dorchester - AR -  
Agricultural Residential



## COUNTY

Dorchester County



## ACRES

24.37 Acres

## PROPERTY OVERVIEW

+/-24.37 acres for sale just outside of downtown Harleyville, SC, Zoned AR within Dorchester County. Great opportunity for timberland investment, homestead, or commercial development.



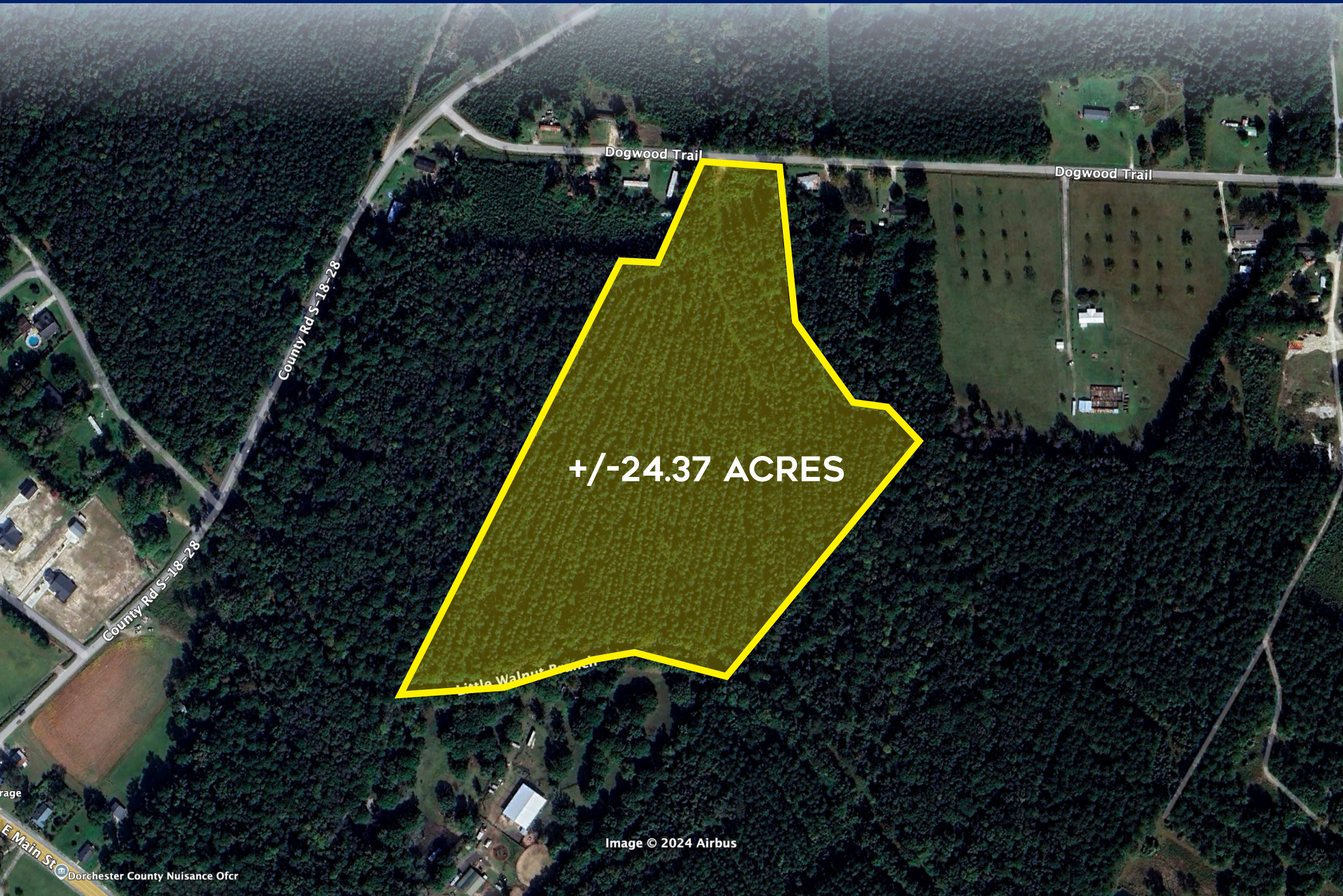
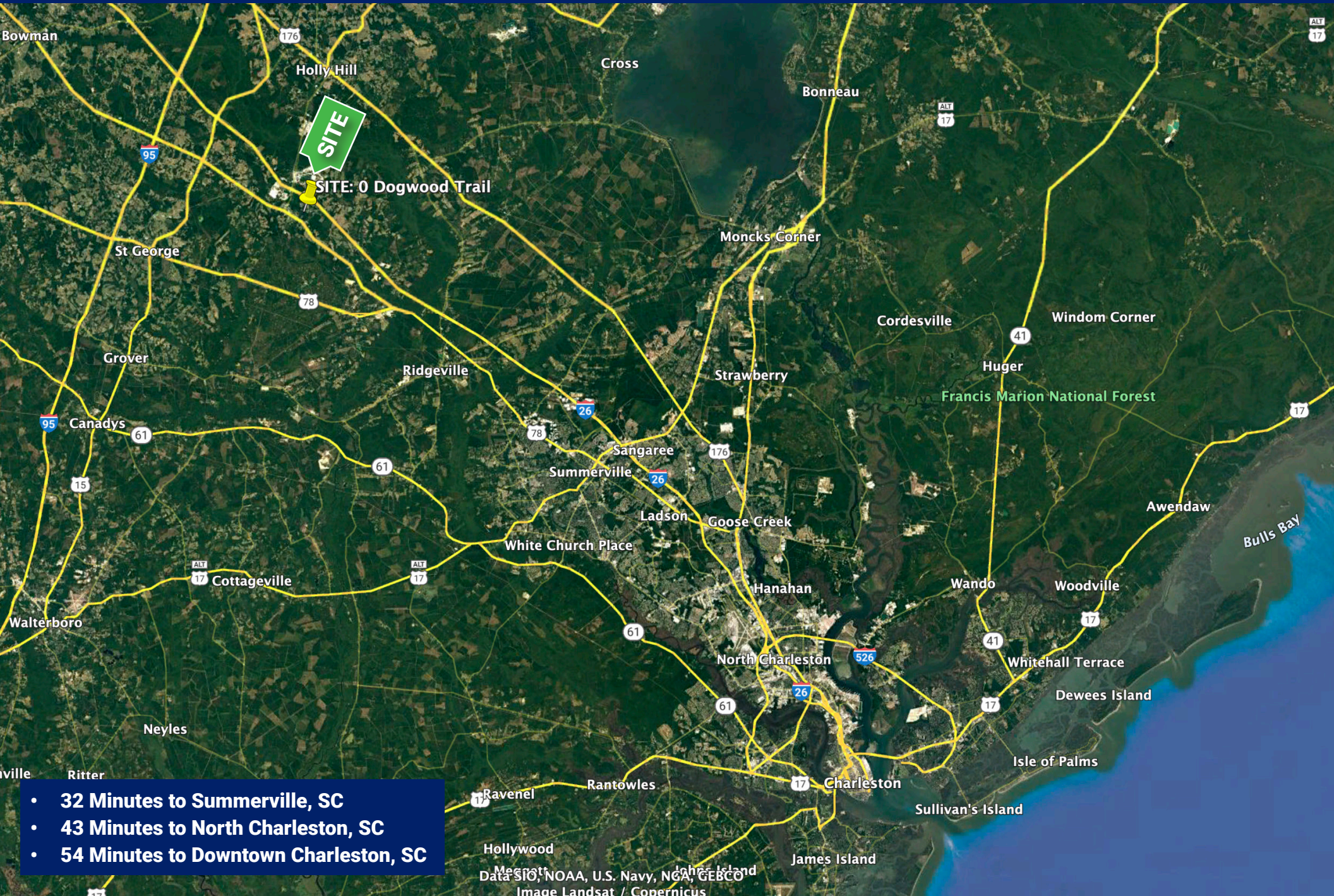


Image © 2024 Airbus

garage  
E Main St  
Dorchester County Nuisance Ofcr

# MACRO MAP



**Neal Walsh**  
**Senior Broker**  
(C) 843.330.3787  
nwalsh@cbsatlantic.com

**Trey Davis**  
**Associate**  
(C) 803.468.7766  
tdavis@cbsatlantic.com



**COLDWELL BANKER**  
**COMMERCIAL**  
**ATLANTIC**

3506 W Montague Ave Suite 200  
North Charleston, SC 29418  
843.744.9877  
cbsatlantic.com | cbcretailatlantic.com

This information has been obtained from sources believed reliable but has not been verified for accuracy or completeness. Coldwell Banker Commercial Atlantic makes no guarantee, representation or warranty and accepts no responsibility or liability as to the accuracy, completeness, or reliability of the information contained herein. You should conduct a careful, independent investigation of the property and verify all information. Any reliance on this information is solely at your own risk.

The information contained herein should be considered confidential and remains the sole property of Coldwell Banker Commercial Atlantic at all times. Although every effort has been made to ensure accuracy, no liability will be accepted for any errors or omissions. Disclosure of any information contained herein is prohibited except with the express written permission of Coldwell Banker Commercial Atlantic.