

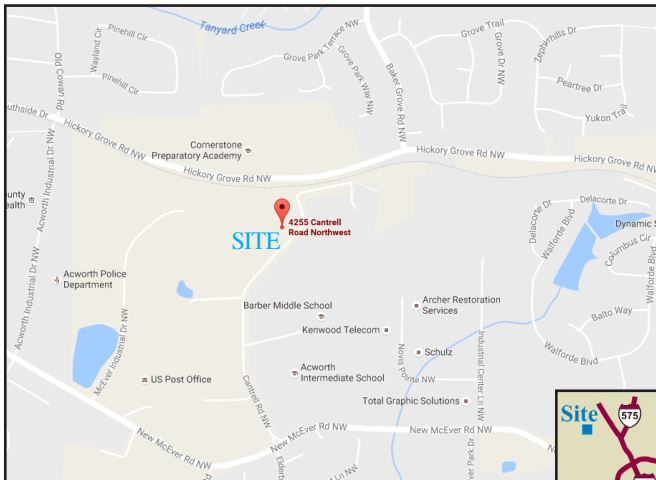
# Build to Suit for Lease or Sale 15,000-26,000 SF Heavy Industrial

Available for Lease or Sale

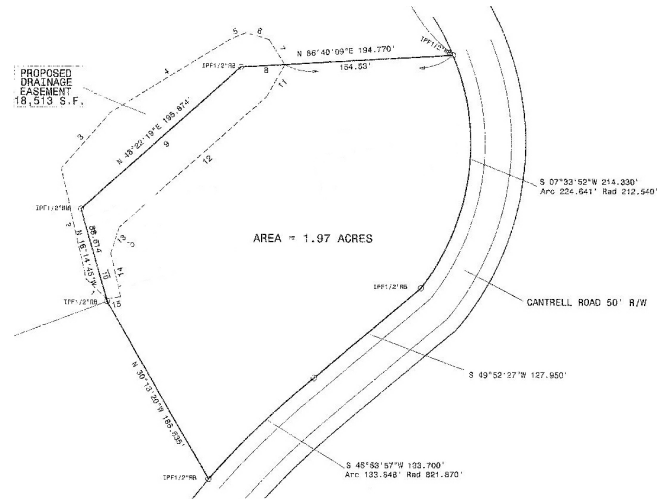
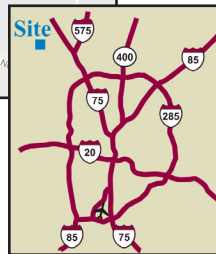


## 4255 Cantrell Road • Acworth, Georgia 30101

- ▶ 15,000-26,000 SF on 1.97 Acres
- ▶ Heavy Industrial Zoning with potential for outside storage



Map not to scale



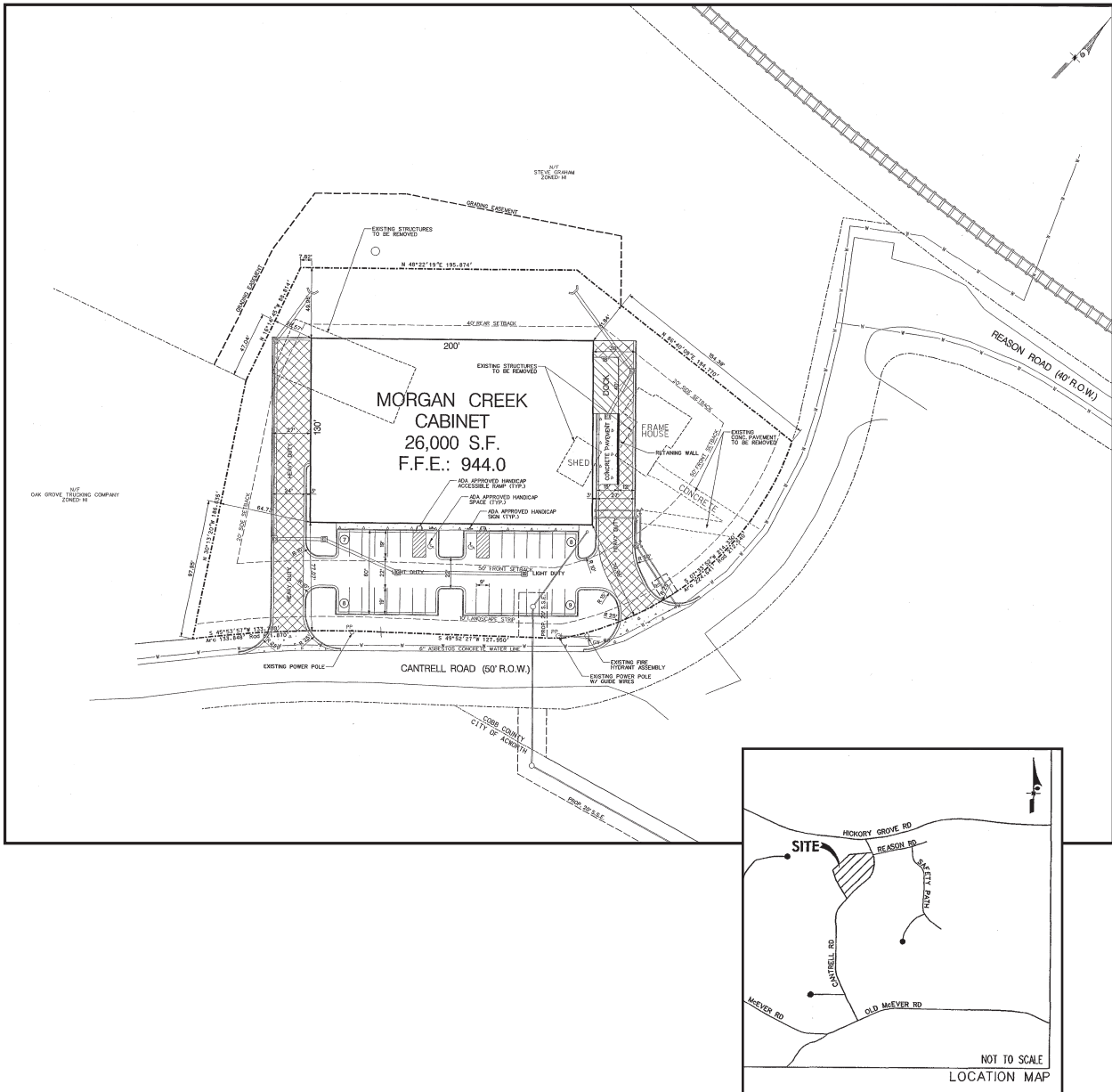
### PLEASE CONTACT:

**Mel Stowers**  
404-626-5966  
mstowers@stowersco.com

**Milton Dortch**  
404-797-2490 (phone)  
miltonadortch@gmail.com

# 4255 Cantrell Road • Acworth, GA 30101

Available for Lease or Sale



## PLEASE CONTACT:

**Mel Stowers**  
404-626-5966  
mstowers@stowersco.com

**Milton Dortch**  
404-797-2490 (phone)  
miltonadortch@gmail.com

**STOWERS & COMPANY**

257 Lawrence St., NE, Unit 5236 • Marietta, GA 30061-2350

770-528-9422