

Mira Vista

2705 BEE CAVES ROAD | AUSTIN, TX | 78746

2,270 - 25,568 SF AVAILABLE

SOUTHWEST SUBMARKET



Mira Vista

2705 BEE CAVES ROAD | AUSTIN, TX | 78746

2,270 - 25,568 SF AVAILABLE

ABOUT MIRA VISTA

Located in the scenic Southwest submarket of Austin, The Mira Vista office building offers excellent access from Mopac Expressway and Bee Caves Road and is less than five minutes from downtown.

The site offers extensive Austin skyline views and is within walking distance to restaurants and retail.

The property holds a prestigious Energy Star rating and offers Class A finishes.



PROPERTY FEATURES

- Multitenant office
- 4.5/1,000 Structured and Surface Parking
- Extensive surrounding panoramic city views
- Class A finishes
- Fitness Center and Shower facilities
- Close proximity to Zilker Park & Lady Bird Lake Hike and Bike Trail



Ben Williamson
256.996.5729
ben@liveoak.com

Doug Thomas
512.695.3985
doug@liveoak.com

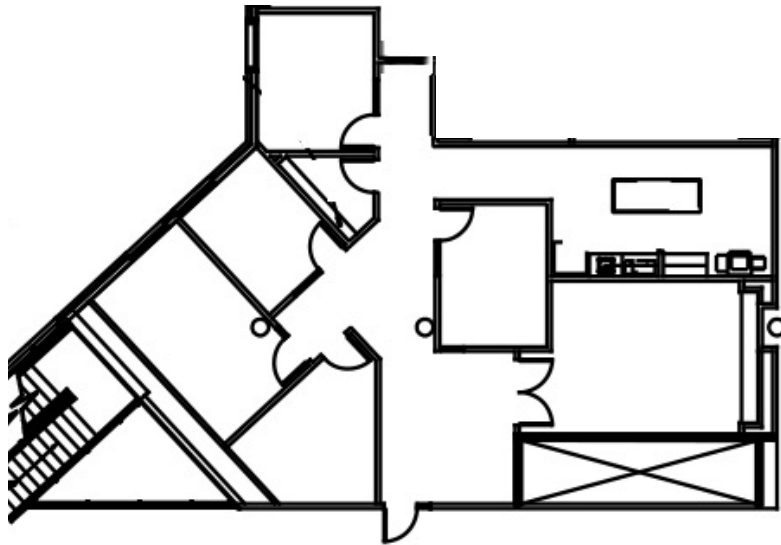
Mira Vista

2705 BEE CAVES ROAD | AUSTIN, TX | 78746

SECOND FLOOR

SUITE 200

Square Feet	2,270 SF
Availability	Immediately



Mira Vista

2705 BEE CAVES ROAD | AUSTIN, TX | 78746

THIRD FLOOR

SUITE 320

Square Feet 8,955 SF

Availability 1/1/2027

SUITE 325

Square Feet 2,317 SF

Availability 1/1/2027

SUITE 340

Square Feet 14,296 SF

Availability 1/1/2027

Maximum Contiguous - 25,568 SF



Mira Vista

2705 BEE CAVES ROAD | AUSTIN, TX | 78746

LOCATION & DRIVE DISTANCES



DRIVE DISTANCES

Downtown Austin 4.5 miles

The Domain 12 miles

Austin-Bergstrom International Airport 12 miles

Round Rock 21 miles

Dripping Springs 20 miles

Bastrop 35 miles

San Antonio 82 miles



Ben Williamson
256.996.5729
ben@liveoak.com

Doug Thomas
512.695.3985
doug@liveoak.com