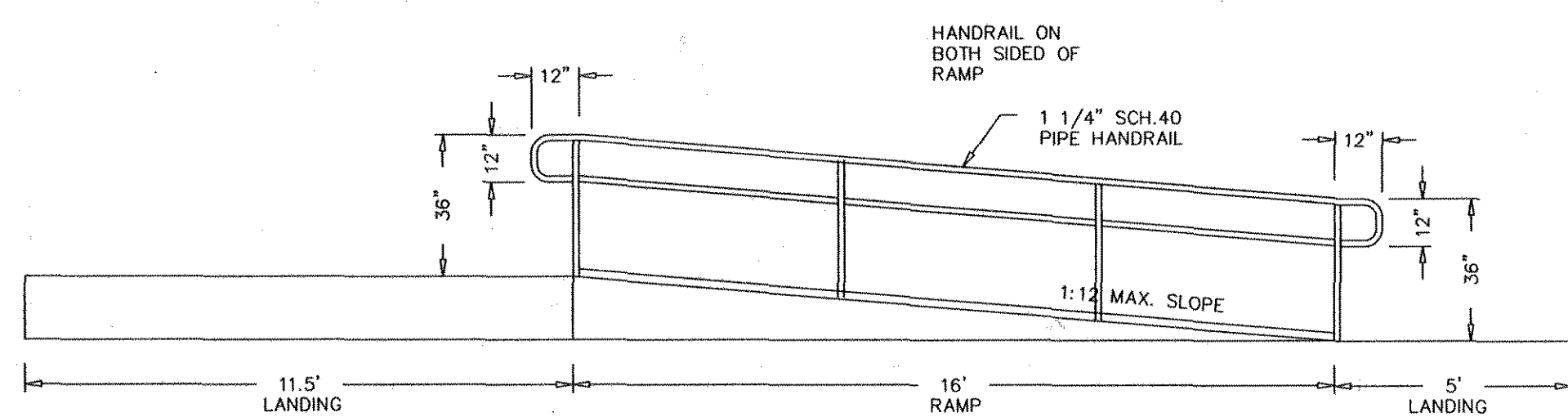
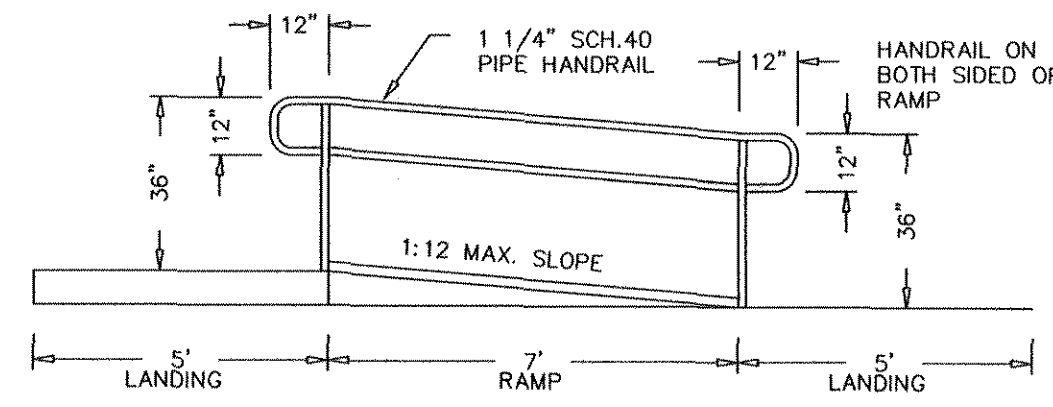




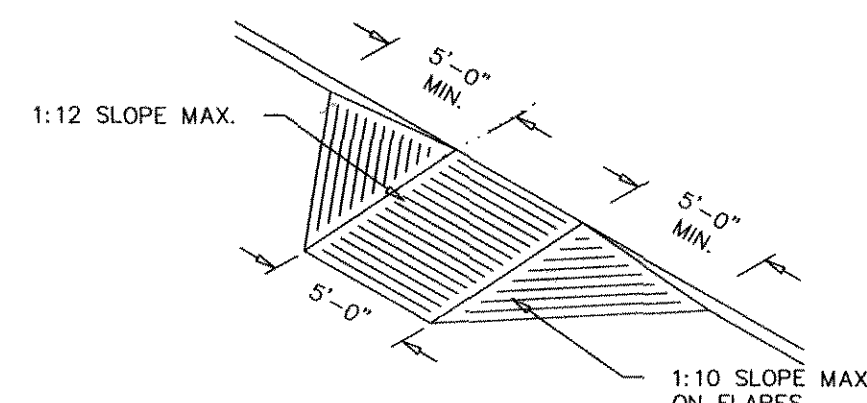
TYPICAL H.C. /VAN PARKING SIGNAGE
SIGNAGE MAY BE MOUNTED ON WALL AT SAME HEIGHT.



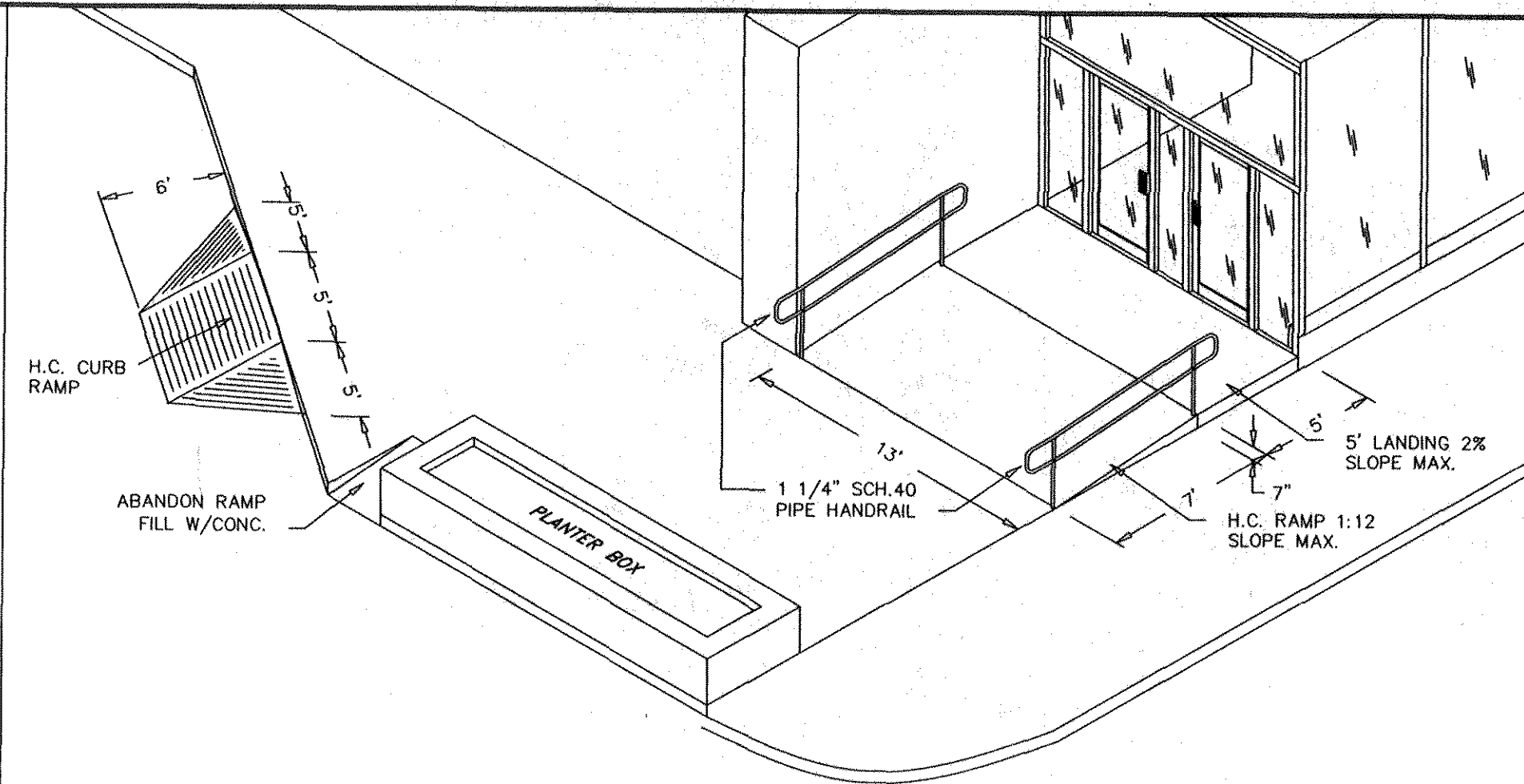
REAR ALLEY H.C. RAMP



MAIN ENTRANCE H.C. RAMP



TYP. H.C. CURB RAMP

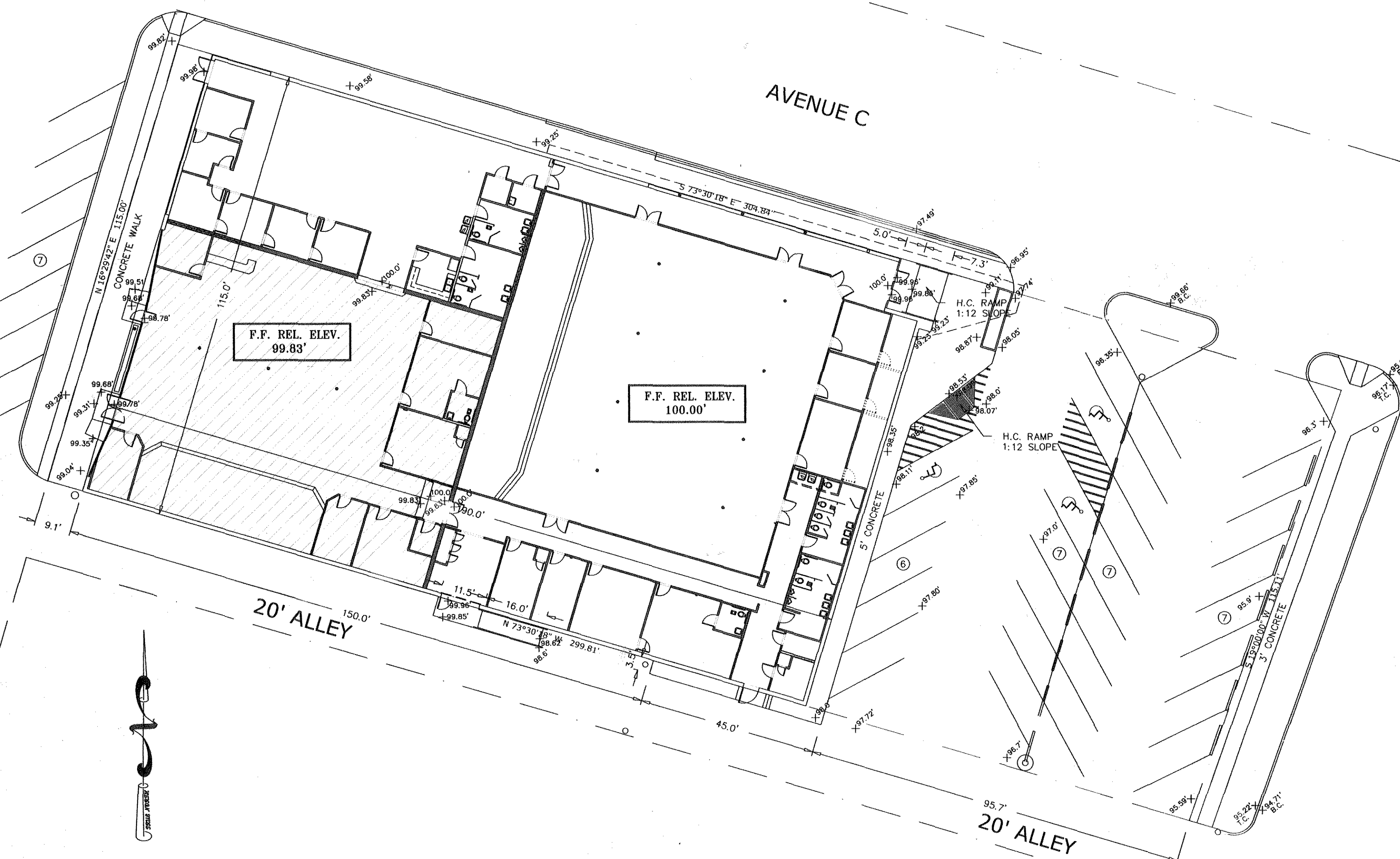


MAIN ENTRANCE

PROFESSIONAL ENGINEERING & DESIGN SERVICES
ELECTRICAL
INDUSTRIAL
COMMERCIAL
RESIDENTIAL

Table with 2 columns: Description, Quantity. Includes items like 1/2\"/>

312 N. 8TH STREET



AVENUE C

20' ALLEY

20' ALLEY

N. 10TH STREET

2000 IBC

2000 Energy Code



Devin K...
310 Oct 2003

THESE DOCUMENTS ARE THE PROPERTY OF ABACUS ENGINEERING, INC. NO PART OF THESE DOCUMENTS MAY BE REPRODUCED OR TRANSMITTED IN ANY FORM OR BY ANY MEANS, ELECTRONIC OR MECHANICAL, WITHOUT PERMISSION IN WRITING FROM ABACUS ENGINEERING, INC. UNAUTHORIZED REPRODUCTION OF THESE PLANS IN WHOLE OR IN PART IS STRICTLY PROHIBITED. ALL APPLICABLE COPY RIGHT LAWS APPLY.

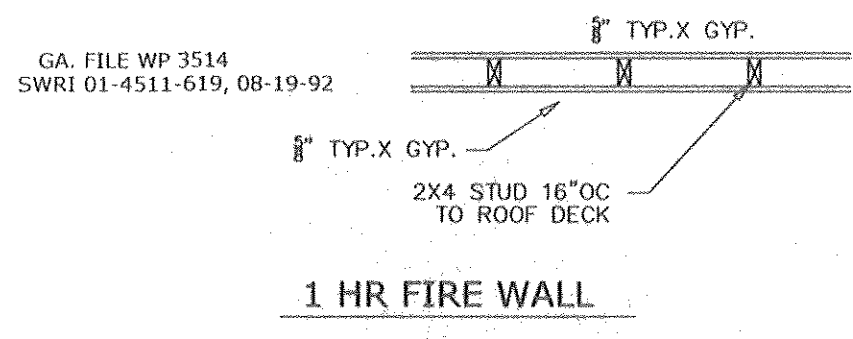
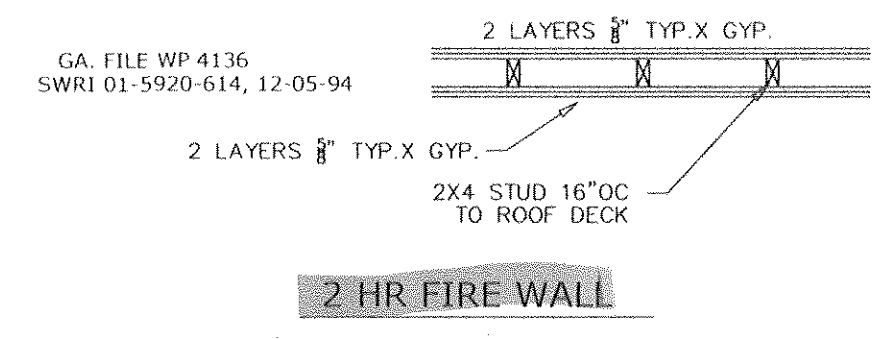
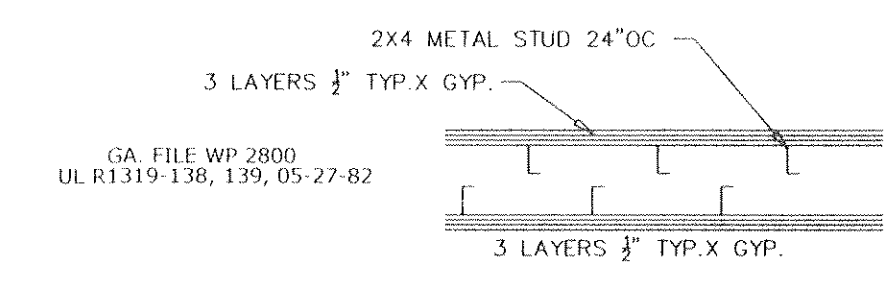
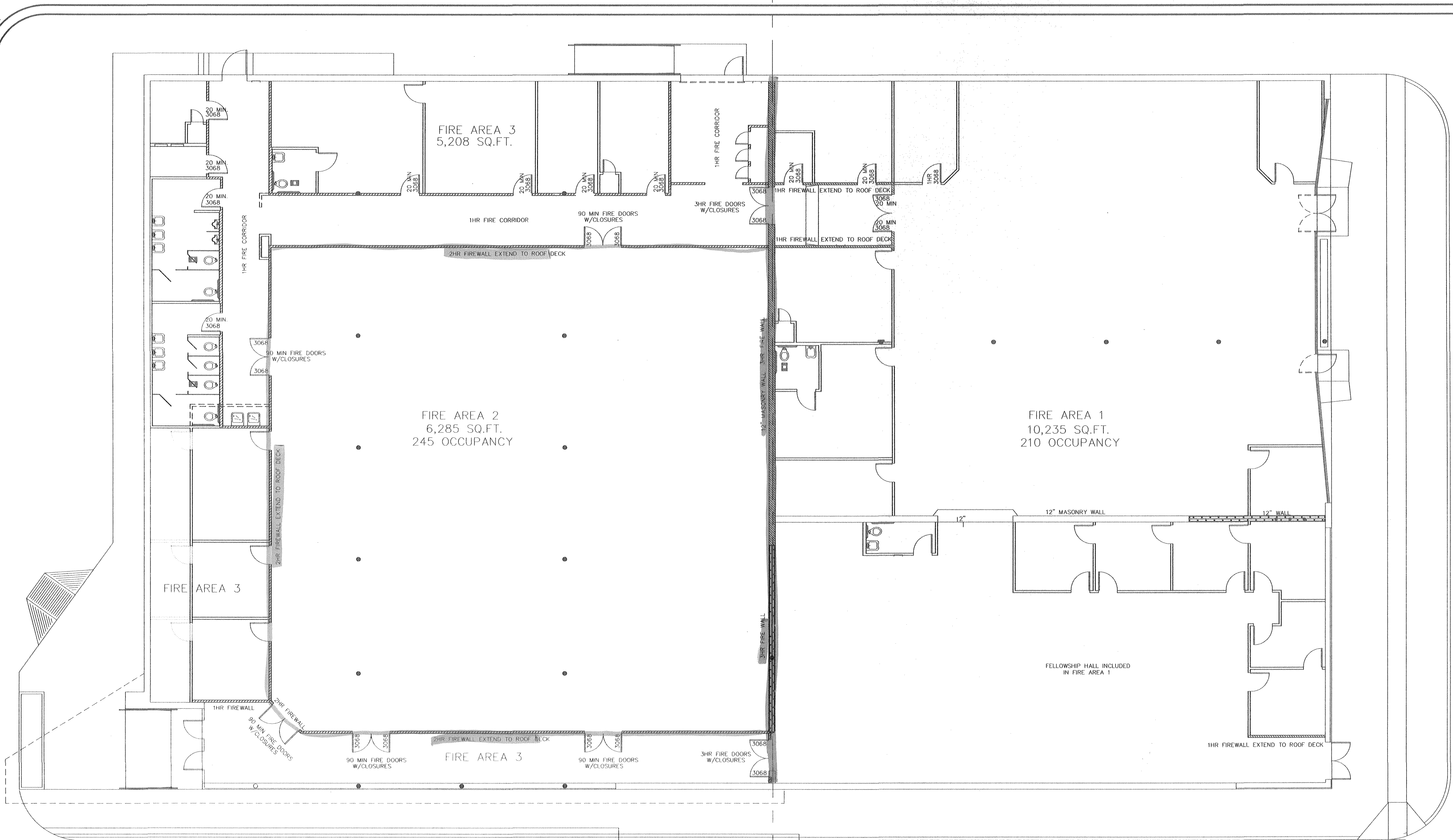
ABACUS ENGINEERING, INC.
2346-008
DRAWN BY: BUTLER
PHKLS101
THE POTTER'S HOUSE
312 NTH 8TH STREET KILLEEN, TEXAS
SITE PLAN
DRAWING NUMBER: 030917-51

* MUST HAVE A MANUAL FIRE ALARM SYSTEM PER NFPA 72

CITY OF KILLEEN
Review for Code Compliance
Per Plan Review Report
Per 2000 IBC Building Code
Per 1999 NEC Electrical Code
By EA Date 11.18.03

ORIGINAL

S1.01



ALL PENETRATIONS THRU FIREWALL SHALL RECEIVE FIRE DAMPERS W/ACCESS DOOR.

ALL PENETRATIONS INTO FIREWALL SHALL BE SEALED WITH HILTI FIRE CAULK OR EQUAL. ALL FIRE WALLS SHALL EXTEND TO BOTTOM OF ROOF DECK.

Denis K. Butler
12 Nov 2003

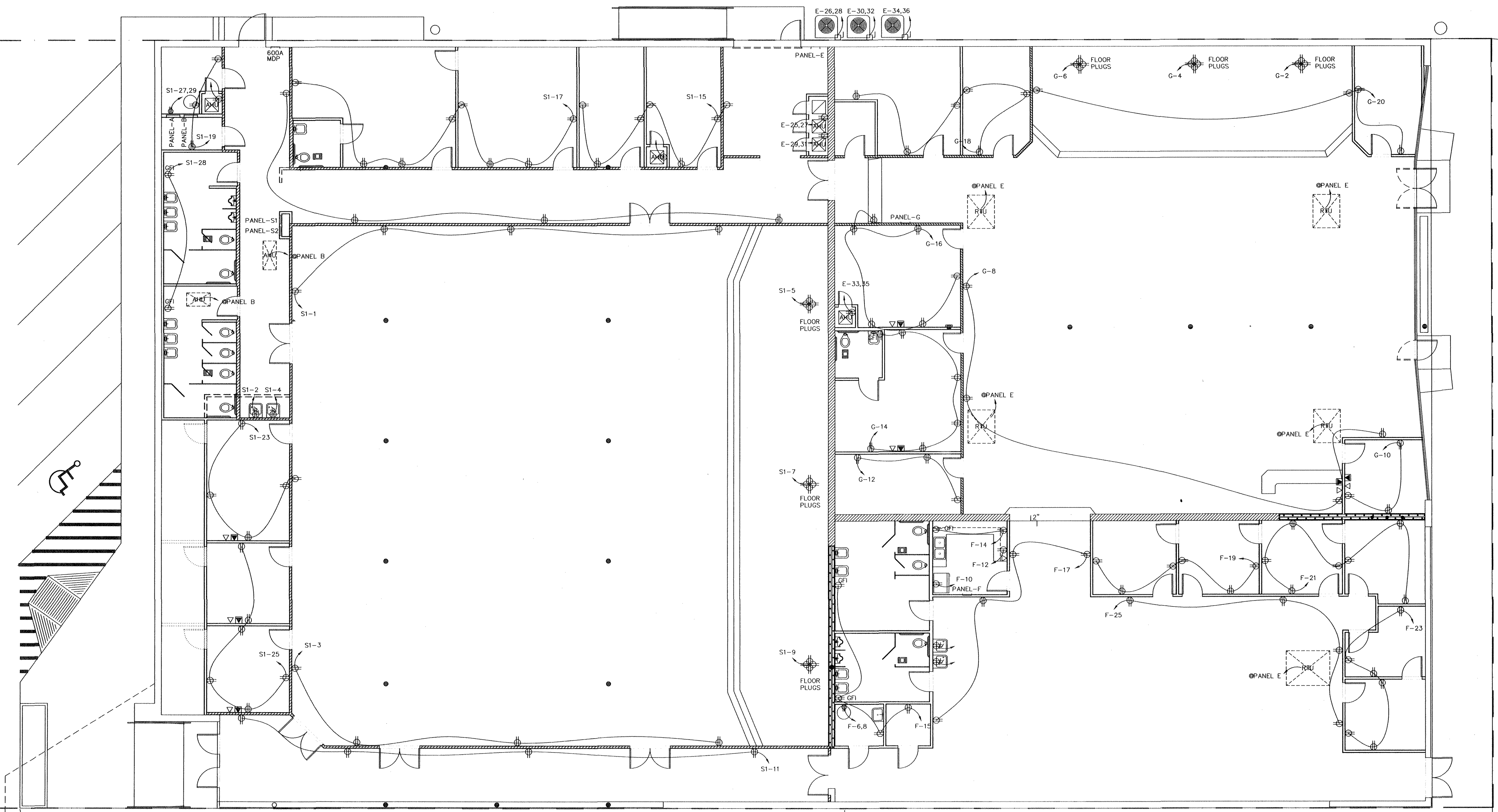
PROFESSIONAL ENGINEERING & DESIGN SERVICES
ELECTRICAL
INDUSTRIAL
COMMERCIAL
RESIDENTIAL

11-12-03 JOB CHANGE LISTING ON FIRE DOORS AND CREATE FIRE AREA 3

THESE DOCUMENTS ARE THE PROPERTY OF ABACUS ENGINEERING, INC. DO NOT COPY WITHOUT WRITTEN PERMISSION. UNAUTHORIZED DUPLICATION OF THESE PLANS IN WHOLE OR IN PART IS STRICTLY PROHIBITED. ALL APPLICABLE COPY RIGHT LAWS APPLY.

ABACUS ENGINEERING, INC.	
254-666-0088	254-666-0088
BUTLER	BUTLER
PHILFID1	PHILFID1
11-10-03	11-10-03
THE POTTERS HOUSE	312 NTH 8TH STREET KILLEEN, TEXAS
FIRE AREA	030917-F11

FI.01



ELECTRICAL PLAN

Dennis K. Roth
 31 Oct 2003

PROFESSIONAL ENGINEERING
 & DESIGN SERVICES
 ENERGY
 ELECTRICAL
 INDUSTRIAL
 COMMERCIAL
 RESIDENTIAL

NO.	DATE	BY	DESCRIPTION
1	09-27-03	PHK/LEL	ISSUED FOR PERMITS
2	10-03-03	PHK/LEL	REVISED PER COMMENTS
3	10-03-03	PHK/LEL	REVISED PER COMMENTS
4	10-03-03	PHK/LEL	REVISED PER COMMENTS
5	10-03-03	PHK/LEL	REVISED PER COMMENTS
6	10-03-03	PHK/LEL	REVISED PER COMMENTS
7	10-03-03	PHK/LEL	REVISED PER COMMENTS
8	10-03-03	PHK/LEL	REVISED PER COMMENTS
9	10-03-03	PHK/LEL	REVISED PER COMMENTS
10	10-03-03	PHK/LEL	REVISED PER COMMENTS
11	10-03-03	PHK/LEL	REVISED PER COMMENTS
12	10-03-03	PHK/LEL	REVISED PER COMMENTS
13	10-03-03	PHK/LEL	REVISED PER COMMENTS
14	10-03-03	PHK/LEL	REVISED PER COMMENTS
15	10-03-03	PHK/LEL	REVISED PER COMMENTS
16	10-03-03	PHK/LEL	REVISED PER COMMENTS
17	10-03-03	PHK/LEL	REVISED PER COMMENTS
18	10-03-03	PHK/LEL	REVISED PER COMMENTS
19	10-03-03	PHK/LEL	REVISED PER COMMENTS
20	10-03-03	PHK/LEL	REVISED PER COMMENTS
21	10-03-03	PHK/LEL	REVISED PER COMMENTS
22	10-03-03	PHK/LEL	REVISED PER COMMENTS
23	10-03-03	PHK/LEL	REVISED PER COMMENTS
24	10-03-03	PHK/LEL	REVISED PER COMMENTS
25	10-03-03	PHK/LEL	REVISED PER COMMENTS
26	10-03-03	PHK/LEL	REVISED PER COMMENTS
27	10-03-03	PHK/LEL	REVISED PER COMMENTS
28	10-03-03	PHK/LEL	REVISED PER COMMENTS
29	10-03-03	PHK/LEL	REVISED PER COMMENTS
30	10-03-03	PHK/LEL	REVISED PER COMMENTS
31	10-03-03	PHK/LEL	REVISED PER COMMENTS
32	10-03-03	PHK/LEL	REVISED PER COMMENTS
33	10-03-03	PHK/LEL	REVISED PER COMMENTS
34	10-03-03	PHK/LEL	REVISED PER COMMENTS
35	10-03-03	PHK/LEL	REVISED PER COMMENTS
36	10-03-03	PHK/LEL	REVISED PER COMMENTS
37	10-03-03	PHK/LEL	REVISED PER COMMENTS
38	10-03-03	PHK/LEL	REVISED PER COMMENTS
39	10-03-03	PHK/LEL	REVISED PER COMMENTS
40	10-03-03	PHK/LEL	REVISED PER COMMENTS

REVISIONS

NOTES

THESE DOCUMENTS ARE THE PROPERTY OF
 ABACUS ENGINEERING, INC.
 DO NOT COPY WITHOUT WRITTEN PERMISSION.
 UNLESS OTHERWISE NOTED, ALL
 PLANS IN THIS SET ARE IN PART
 IS STRICTLY PROHIBITED. ALL
 APPLICABLE COPY RIGHT LAWS APPLY.

ABACUS ENGINEERING, INC.
 11000 DALLAS ROAD
 SUITE 100
 DALLAS, TEXAS 75243
 PHONE: 972-412-1100
 FAX: 972-412-1101
 WWW: WWW.ABACUS-ENG.COM

DESIGNED BY: BUTLER
 CHECKED BY: PHK/LEL

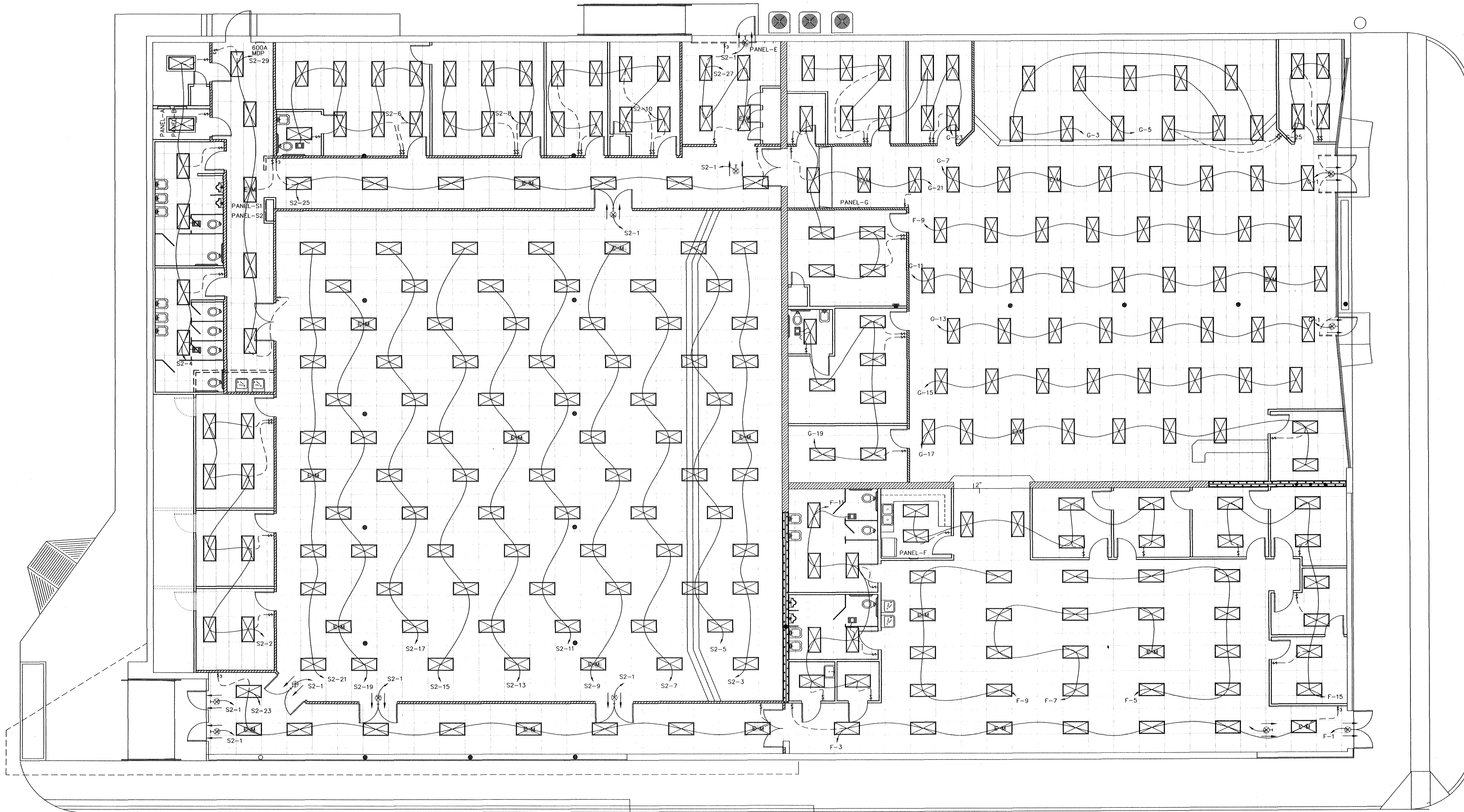
PROJECT: THE POTTER'S HOUSE
 312 NTH 8TH STREET KILLEEN, TEXAS

DATE: 09-27-03

ELECTRICAL PLAN

PROJECT NO: 030927-E1

EL.01



LIGHTING PLAN

PROFESSIONAL ENGINEERING
& DESIGN SERVICES
ENERGY ELECTRICAL
INDUSTRIAL COMMERCIAL RESIDENTIAL

NO.	DATE	BY
1	09-27-03	PHKLELOZ
2	10-01-03	PHKLELOZ
3	10-01-03	PHKLELOZ
4	10-01-03	PHKLELOZ
5	10-01-03	PHKLELOZ
6	10-01-03	PHKLELOZ
7	10-01-03	PHKLELOZ
8	10-01-03	PHKLELOZ
9	10-01-03	PHKLELOZ
10	10-01-03	PHKLELOZ
11	10-01-03	PHKLELOZ
12	10-01-03	PHKLELOZ
13	10-01-03	PHKLELOZ
14	10-01-03	PHKLELOZ
15	10-01-03	PHKLELOZ
16	10-01-03	PHKLELOZ
17	10-01-03	PHKLELOZ
18	10-01-03	PHKLELOZ
19	10-01-03	PHKLELOZ
20	10-01-03	PHKLELOZ
21	10-01-03	PHKLELOZ
22	10-01-03	PHKLELOZ
23	10-01-03	PHKLELOZ
24	10-01-03	PHKLELOZ
25	10-01-03	PHKLELOZ
26	10-01-03	PHKLELOZ
27	10-01-03	PHKLELOZ
28	10-01-03	PHKLELOZ
29	10-01-03	PHKLELOZ
30	10-01-03	PHKLELOZ

Dennis K. Butler
31 Oct 2003

REVISIONS
NOTES

THESE DOCUMENTS ARE THE PROPERTY OF
ABACUS ENGINEERING, INC.
DO NOT COPY WITHOUT WRITTEN PERMISSION.
UNAUTHORIZED DUPLICATION OF THESE
PLANS IN WHOLE OR IN PART
IS STRICTLY PROHIBITED. ALL
APPLICABLE COPY RIGHT LAWS APPLY.

ABACUS ENGINEERING, INC.
P.O. BOX 3132
WACO, TEXAS 76798
SCALE: 1/8" = 1'
DATE: 09-27-03

DRAWN BY: BUTLER
PHKLELOZ
THE POTTER'S HOUSE
312 NTH 8TH STREET KILLEEN, TEXAS
DRAWING NUMBER: 030927-E2

EL.02

PANEL "S1"										MAINS, SIZE & TYPE		200A		LOCATION		SANCTUARY CORRIDOR	
										MAIN CB		200A MLO		FEEDER		3-3/0 IN 2" C	
										VOLTAGE		120/208-1Ø-3W		FROM		PANEL A	
										MOUNTING		SURFACE		GROUND		#4 CU. GRND.	
										POLES/SECTION		2		REMARKS			
CKT. NO.	AMPS	POLE	WIRE SIZE	COND. SIZE	LOAD SERVED	LOAD - V.A.		CKT. NO.	AMPS	POLE	WIRE SIZE	COND. SIZE	LOAD SERVED				
						A #	B #										
1	20	1	12	3/4"	SANCTUARY	720		2	20	1	12	3/4"	EWC				
3	20	1	12	3/4"	SANCTUARY	1400		4	20	1	12	3/4"	EWC				
5	20	1	12	3/4"	SANCTUARY	720		6	-	-	-	-	SPACE				
7	20	1	12	3/4"	SANCTUARY	500		8	-	-	-	-	SPACE				
9	20	1	12	3/4"	SANCTUARY	720		10	-	-	-	-	SPACE				
11	20	1	12	3/4"	SANCTUARY	500		12	-	-	-	-	SPACE				
13	20	1	12	3/4"	SANCTUARY	720		14	-	-	-	-	SPACE				
15	20	1	12	3/4"	SANCTUARY	500		16	-	-	-	-	SPACE				
17	20	1	12	3/4"	SANCTUARY	1440		18	-	-	-	-	SPACE				
19	20	1	12	3/4"	SANCTUARY	500		20	-	-	-	-	SPACE				
21	20	1	12	3/4"	SANCTUARY	500		22	-	-	-	-	SPACE				
23	20	1	12	3/4"	SANCTUARY	500		24	-	-	-	-	SPACE				
25	20	1	12	3/4"	SANCTUARY	1080		26	-	-	-	-	SPACE				
27	30	2	10	3/4"	WATER HEATER	2500		28	-	-	-	-	SPACE				
29	-	-	-	-	SPACE	500		30	-	-	-	-	SPACE				
31	-	-	-	-	SPACE	500		32	-	-	-	-	SPACE				
33	-	-	-	-	SPACE	500		34	-	-	-	-	SPACE				
35	-	-	-	-	SPACE	500		36	-	-	-	-	SPACE				
37	-	-	-	-	SPACE	500		38	-	-	-	-	SPACE				
39	-	-	-	-	SPACE	500		40	-	-	-	-	SPACE				
41	-	-	-	-	SPACE	500		42	-	-	-	-	SPACE				
TOTAL VA/PHASE						16300	14750	REMARKS									
TOTAL AMP/PHASE						135.83	122.91										
TOTAL KVA/PHASE						1630	14.75										
TOTAL KVA						31.05											
TOTAL AMP						149.27											

PANEL "E"										MAINS, SIZE & TYPE		400A		LOCATION		CORRIDOR	
										MAIN CB		400A MLO		FEEDER		4-600 MCM IN 3 1/2" C	
										VOLTAGE		120/208-3Ø-4W		FROM		MDP	
										MOUNTING		SURFACE		GROUND		1/0 CU. GRND	
										POLES/SECTION		3		REMARKS			
CKT. NO.	AMPS	POLE	WIRE SIZE	COND. SIZE	LOAD SERVED	LOAD - V.A.			CKT. NO.	AMPS	POLE	WIRE SIZE	COND. SIZE	LOAD SERVED			
						A #	B #	C #									
1	60	2	-	-	RTU 1	4056			2	-	-	-	-				
3	-	-	-	-	SPACE	5556			4	60	3	-	-	RTU 5			
5	60	2	-	-	RTU 2	4056			6	-	-	-	-				
7	-	-	-	-	SPACE	5556			8	-	-	-	-				
9	60	2	-	-	RTU 3	4056			10	-	-	-	-				
11	-	-	-	-	SPACE	500			12	-	-	-	-				
13	60	2	-	-	RTU 4	3456			14	-	-	-	-				
15	-	-	-	-	SPACE	500			16	-	-	-	-				
17	-	-	-	-	SPACE	3456			18	-	-	-	-				
19	-	-	-	-	SPACE	500			20	-	-	-	-				
21	-	-	-	-	SPACE	500			22	200	2	-	-	PANEL G			
23	-	-	-	-	SPACE	500			24	-	-	-	-				
25	60	2	6	1"	AHU 1	4920			26	-	-	-	-				
27	-	-	-	-	SPACE	2580			28	30	2	10	3/4"	COND 1			
29	60	2	6	1"	AHU 2	4920			30	30	2	10	3/4"	COND 2			
31	-	-	-	-	SPACE	2580			32	-	-	-	-				
33	60	2	6	1"	AHU 3	4920			34	30	2	10	3/4"	COND 3			
35	-	-	-	-	SPACE	2580			36	-	-	-	-				
37	-	-	-	-	SPACE	500			38	-	-	-	-				
39	-	-	-	-	SPACE	500			40	-	-	-	-				
41	-	-	-	-	SPACE	500			42	-	-	-	-				
TOTAL VA/PHASE						27384	43686	39798	REMARKS								
TOTAL AMP/PHASE						228.2	364.05	331.65	NON COINCIDENTAL LOADING								
TOTAL KVA/PHASE						27.83	43.68	39.79									
TOTAL KVA						307.91											
TOTAL AMP						372.41											

PANEL "F"										MAINS, SIZE & TYPE		200A		LOCATION		KITCHEN	
										MAIN CB		200A MLO		FEEDER		4-3/0 IN 2" C	
										VOLTAGE		120/208-3Ø-4W		FROM		MDP	
										MOUNTING		SURFACE		GROUND		#4 CU. GRND	
										POLES/SECTION		3		REMARKS			
CKT. NO.	AMPS	POLE	WIRE SIZE	COND. SIZE	LOAD SERVED	LOAD - V.A.			CKT. NO.	AMPS	POLE	WIRE SIZE	COND. SIZE	LOAD SERVED			
						A #	B #	C #									
1	20	1	12	3/4"	EMRG LTS	500			2	20	1	12	3/4"	EWC			
3	20	1	12	3/4"	FELLOWSHIP	1330			4	20	1	12	3/4"	EWC			
5	20	1	12	3/4"	FELLOWSHIP	1400			6	-	-	-	-				
7	20	1	12	3/4"	FELLOWSHIP	1330			8	30	2	10	3/4"	WATER HEATER			
9	20	1	12	3/4"	FELLOWSHIP	2500			10	20	1	12	3/4"	REFRIG			
11	20	1	12	3/4"	REST ROOM	1140			12	20	1	12	3/4"	MICROWAVE			
13	20	1	12	3/4"	KITCHEN/CLASS	1520			14	20	1	12	3/4"	KITCHEN			
15	20	1	12	3/4"	RESTROOM	1000			16	-	-	-	-				
17	-	-	-	-	SPACE	760			18	-	-	-	-				
19	-	-	-	-	SPACE	500			20	-	-	-	-				
21	-	-	-	-	SPACE	1140			22	-	-	-	-				
23	-	-	-	-	SPACE	500			24	-	-	-	-				
25	-	-	-	-	SPACE	1330			26	-	-	-	-				
27	-	-	-	-	SPACE	500			28	-	-	-	-				
29	-	-	-	-	SPACE	500			30	-	-	-	-				
31	-	-	-	-	SPACE	500			32	-	-	-	-				
33	-	-	-	-	SPACE	500			34	-	-	-	-				
35	-	-	-	-	SPACE	500			36	-	-	-	-				
37	-	-	-	-	SPACE	500			38	-	-	-	-				
39	-	-	-	-	SPACE	500			40	-	-	-	-				
41	-	-	-	-	SPACE	500			42	-	-	-	-				
TOTAL VA/PHASE						12150	11360	12850	REMARKS								
TOTAL AMP/PHASE						101.25	94.66	107.08									
TOTAL KVA/PHASE						12.15	11.36	12.85									
TOTAL KVA						36.36											
TOTAL AMP						101.0											

PANEL "S2"										MAINS, SIZE & TYPE		200A		LOCATION		SANCTUARY CORRIDOR	
										MAIN CB		200A MLO		FEEDER		3-3/0 IN 2" C	
										VOLTAGE		120/208-1Ø-3W		FROM		PANEL A	
										MOUNTING		SURFACE		GROUND		#4 CU. GRND.	
										POLES/SECTION		2		REMARKS			
CKT. NO.	AMPS	POLE	WIRE SIZE	COND. SIZE	LOAD SERVED	LOAD - V.A.		CKT. NO.	AMPS	POLE	WIRE SIZE	COND. SIZE	LOAD SERVED				
						A #	B #										
1	20	1	12	3/4"	EMRG LTS	1330		2	20	1	12	3/4"	RESTROOM				
3	20	1	12	3/4"	SANCTUARY	1520		4	20	1	12	3/4"	OFFICE				
5	20	1	12	3/4"	SANCTUARY	1520		6	20	1	12	3/4"	NURSRY				
7	20	1	12	3/4"	SANCTUARY	1520		8	20	1	12	3/4"	NURSRY				
9	20	1	12	3/4"	SANCTUARY	1140		10	20	1	12	3/4"	CLASSROOM				
11	20	1	12	3/4"	SANCTUARY	1520		12	-	-	-	-	SPACE				
13	20	1	12	3/4"	SANCTUARY	1520		14	-	-	-	-	SPACE				
15	20	1	12	3/4"	SANCTUARY	500		16	-	-	-	-	SPACE				
17	20	1	12	3/4"	SANCTUARY	1520		18	-	-	-	-	SPACE				
19	20	1	12	3/4"	CORRIDOR	760		20	-	-	-	-	SPACE				
21	20	1	12	3/4"	CORRIDOR	950		22	-	-	-	-	SPACE				
23	20	1	12	3/4"	SPACE	500		24	-	-	-	-	SPACE				
25	20	1	12	3/4"	SPACE	500		26	-	-	-	-	SPACE				
27	-	-	-	-	SPACE	500		28	-	-	-	-	SPACE				
29	-	-	-	-	SPACE	500		30	-	-	-	-	SPACE				
31	-	-	-	-	SPACE	500		32	-	-	-	-	SPACE				
33	-	-	-	-	SPACE	500		34	-	-	-	-	SPACE				
35	-	-	-	-	SPACE	500		36	-	-	-	-	SPACE				
37	-	-	-	-	SPACE	500		38	-	-	-	-	SPACE				
39	-	-	-	-	SPACE	500		40	-	-	-	-	SPACE				
41	-	-	-	-	SPACE	500		42	-	-	-	-	SPACE				
TOTAL VA/PHASE						18920	17180	REMARKS									
TOTAL AMP/PHASE						157.67	143.17										
TOTAL KVA/PHASE						18.92	17.18										
TOTAL KVA						36.1											
TOTAL AMP						173.55											

PANEL "G"										MAINS, SIZE & TYPE		200A		LOCATION		EXTREME CORRIDOR	
										MAIN CB		200A MLO		FEEDER		3-3/0 IN 2" C	
										VOLTAGE		120/208-1Ø-3W		FROM		PANEL E	
										MOUNTING		SURFACE		GROUND		#4 CU. GRND.	
										POLES/SECTION		2		REMARKS			
CKT. NO.	AMPS	POLE	WIRE SIZE	COND. SIZE	LOAD SERVED	LOAD - V.A.			CKT. NO.	AMPS	POLE	WIRE SIZE	COND. SIZE	LOAD SERVED			
						A #	B #	C #									
1	20	1	12	3/4"	EMRG LTS	500			2	20	1	12	3/4"	EXTREME STAGE			
3	20	1	12	3/4"	STAGE EXTREME	760			4	20	1	12	3/4"	EXTREME STAGE			
5	20	1	12	3/4"	STAGE EXTREME	1140			6	20	1	12	3/4"	EXTREME STAGE			
7	20	1	12	3/4"	EXTREME	720			8	20	1	12	3/4"	EXTREME			
9	20	1	12	3/4"	EXTREME	1520			10	20	1	12	3/4"	OFFICE			
11	20	1	12	3/4"	EXTREME	540			12	20	1	12	3/4"	STOR.			
13	20	1	12	3/4"	EXTREME	1520			14	20	1	12	3/4"	PASTOR			
15	20	1	12														

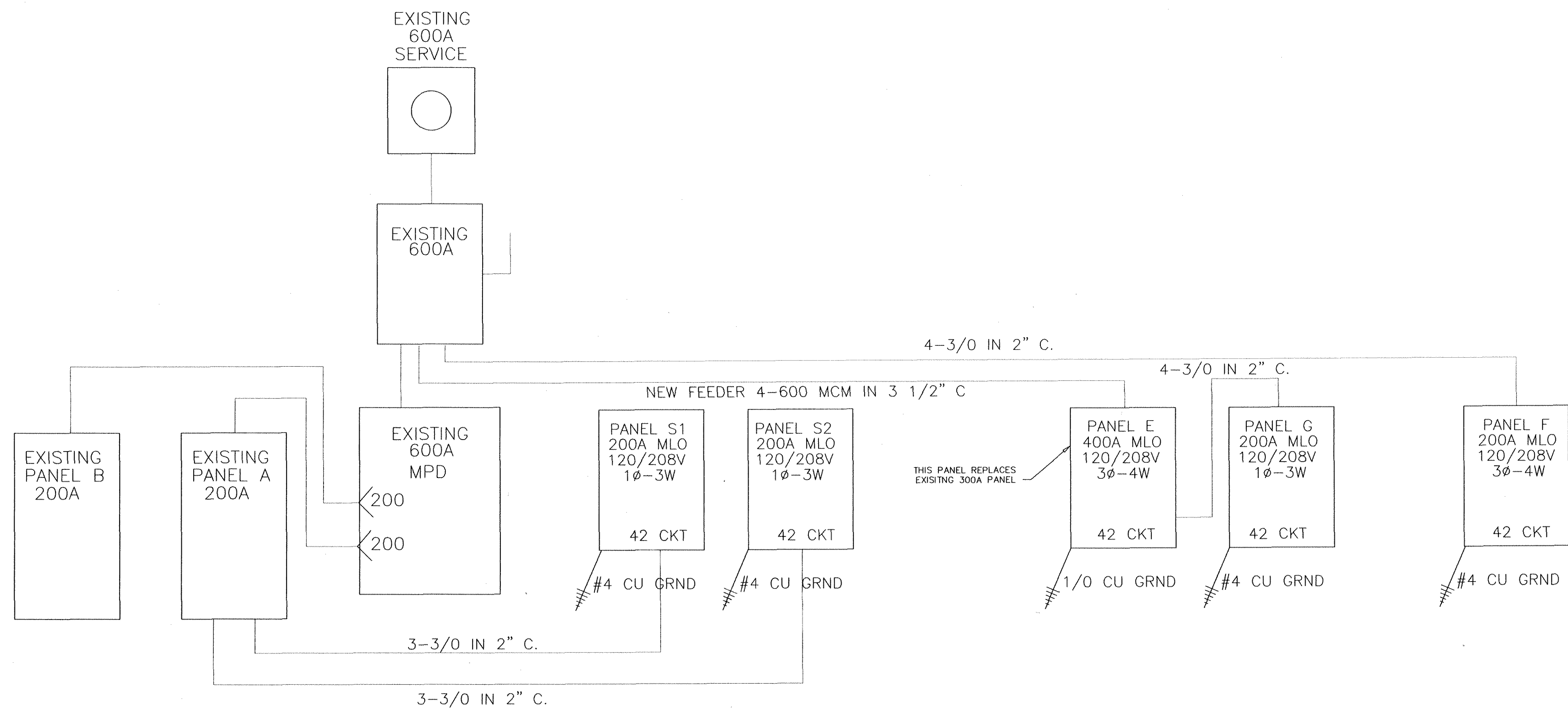
ELECTRICAL LOAD CALCULATIONS - POTTER'S HOUSE KILLEEN, TEXAS			
COMMERCIAL = 21,713			
	VA CONN	FACTOR	DEMAND
GENERAL LIGHTING: COMMERCIAL = 1W / SQUARE FOOT X 21,713 sq ft	21,713	1.25	27,141.25
GENERAL PURPOSE RECEPTACLES: 120 ea. @ 180 VA 1ST 10 KVA @ 100% REMAINDER OVER 10 KVA @ 50%	21,600 10,000 11,600	1.00 .5	10,000 5,800
HVAC: 58 TONS @ 2 KW per TON OR 50 KW ELECTRICAL HEAT → LARGEST	117,000	1.25	146,250
OTHER: MISC. ITEMS: WATER HEATER, REFIG, EWC, MICRO, OFFICE	20,000	1.00	20,000
DESIGN VA =			209,191.25
AT 120V/208V - 3phase - 4wire = 581.9amps USE 600amp SERVICE MINIMUM			

SYMBOL SCHEDULE

- ⊕ 20A 125V DUPLEX RECEPTACLE MOUNT AT 18" AFF
GFI-GROUND FAULT ; WP-WEATHER PROOF COVER
30A 220V
- ⊕ 20A 125V DUPLEX RECEPTACLE IN FLOOR BOX WITH
FLOOR PLATE & CARPET FLANGE
- ⊕ DATA OUTLET - SAME AS TELEPHONE OUTLET EXCEPT WITHOUT
WIRE/JACK
- ⊕ TELEPHONE OUTLET, INSTALL RJ-11C AND ROUTE 24/6 IW
TO TELEPHONE BOARD, ROUTE 3/4"C TO ACCESS IN CEILING
- ⊕ 20A 120/277V SWITCH MOUNT AT 48" AFF
- 3 20A 120/277V 3 WAY SWITCH
- 4 20A 120/277V 4 WAY SWITCH
- DISCONNECT
- GFI GROUND FAULT INTERRUPT
- ☐ DAYTON (GRAINGER) MDEL 4C608 HEAT/LIGHT/FAN WITH HEAT TIMER
- ☐ EXIT LIGHT (BATTERY BACK-UP) BY SURE-LITE MDEL PCX8000R
- ☐ 2" X 4" RECESSED MT. FLUORESCENT BY LITHONIA 2GT832A12 1/3GE8 3 T8 BULBS
- ☐ 2" X 4" RECESSED MT. FLUORESCENT W/BATTERY BACH-UP KIT

ELECTRICAL NOTES:

1. THE COMPLETE ELECTRICAL SYSTEM AND INSTALLATION SHALL CONFORM TO THE LATEST APPLICABLE REGULATIONS OF THE NATIONAL ELECTRICAL CODE & ALL LOCAL LAWS AND CODES.
2. ALL MATERIALS, APPARATUS AND EQUIPMENT SHALL BE NEW & BEAR THE UIL SEAL.
3. REFER TO ALL PROJECT DRAWINGS AND PLACE ALL WORK ACCORDINGLY. DRAWINGS ARE NOT TO BE SCALED FOR LOCATIONS. ALL WORK IS TO BE COORDINATED WITH ALL OTHER TRADES FOR PROPER FIT & LOCATION.
4. THE COMPLETE INSTALLATION SHALL BE FREE OF GROUNDS, SHORTS AND OPEN CIRCUITS.
5. THE METHOD OF DISTRIBUTION OF ALL POWER & LIGHTING WILL BE AS INDICATED BY THE PLANS.
6. FURNISH AND INSTALL ALL WIRING TO MOTORS, HEATERS & MECHANICAL EQUIPMENT AS SHOWN ON THE DRAWINGS. WIRING INTO MOTOR OR EQUIPMENT TERMINALS WILL BE COMPLETE THRU MOTOR STARTERS & DISCONNECT SWITCHES.
7. ELECTRICAL CONTRACTOR IS TO SUPPLY ALL ELECTRIC MOTOR STARTERS.
8. OUTLETS ARE REQUIRED IN THE WIRING SYSTEM WHEREVER NEEDED FOR PULLING WIRES, MAKING CONNECTIONS TRANSITIONS IN WIRING TYPES AND FOR MOUNTING WIRING DEVICES & EQUIPMENT.
9. ALL EXPOSED NON-CURRENT CARRYING METAL PARTS OF ELECTRICAL EQUIPMENT, CONDUIT SYSTEM AND NEUTRAL CONDUCTOR OF THE WIRING SYSTEM SHALL BE GROUNDED.
10. ALL CONDUIT AND TUBING SHALL MEET LOCAL, STATE AND NATIONAL CODES.
11. DEVICE PLATES SHALL BE INSTALLED FOR ALL DEVICES, BOXES, ETC.. THEY SHALL BE SUITABLE FOR THE DEVICE.
12. CONDUCTORS WILL BE 600 VOLT THERMOPLASTIC INSULATED COPPER OF 98% CONDUCTIVITY INSTALLED IN CONDUIT.
13. THE NUMBER OF CONDUCTORS INSTALLED IN A CONDUIT MUST NOT BE GREATER THAN IT WAS DESIGNED FOR.
14. CONDUCTORS WILL BE A MINIMUM OF #12 AWG-75 DEGREE C TYPE, WHILE BRANCH CIRCUIT CONDUCTORS ARE STRANDED #12 AWG-90 DEGREE C 600 VOLT TYPE.
15. ALL FIXTURES SHALL BE AS INDICATED ON THE PLANS OR IN THE SPECIFICATIONS COMPLETE WITH NEW LAMPS AS REQUIRED BY THE SPECS. BALLASTS WILL BE AS SPECIFIED OR AS REQUIRED BY THE INTENDED USE.
1 1/2" SPACERS WILL BE USED WHEN INSTALLING FLUORESCENT STRIP FIXTURES.
16. MOUNT ALL LIGHT SWITCHES AT 48" AFF TO TOP OF BOX.
17. MOUNT ALL DUPLEX OUTLETS AT 16" AFF TO BOTTOM OF BOX.
18. ENSURE THAT ALL ELECTRICAL, TELEPHONE & COMPUTER OUTLETS ARE NOT PLACED ON COMMON STUD CAVITIES ON OPPOSITE SIDES OF COMMON WALLS. COORDINATE LOCATIONS W/ OWNER & CONTRACTOR.
19. ALL PANELBOARDS SHALL BE STD. DEAD FRONT, WITH THE SIZE AND NUMBER OF SINGLE AND MULTIPLE BREAKERS AS INDICATED BY THE PLANS. BUS MAINS SHALL BE COPPER FOR SYSTEM VOLTAGE AND FEEDER SIZE. PANELBOARDS ARE TO BE COMPLETE WITH REQUIRED TRIMS, LOCKING DOOR, CONCEALED HINGES, AND DIRECTORY FRAME WITH COMPLETED DIRECTORY CARD. ALL PANELS WILL HAVE DISTRIBUTED BUSSING & SEQUENCE NUMBERING. ALL PANELS AND BREAKERS SHALL BE SQUARE-D, GE, SIEMENS OR APPROVED EQUAL.
20. ELECTRICAL CONTRACTOR SHALL COORDINATE WORK W/ LOCAL PHONE COMPANY AND, IF REQUIRED, FURNISH AND INSTALL CONDUITS, OUTLETS, DEVICE PLATES, PLYWOOD BACK PLATES, ETC. AS REQUIRED. GROUND PHONE WIRING TO COLD WATER PIPES OR AS REQUIRED BY THE PHONE COMPANY.
21. ELECTRICAL CONTRACTOR SHALL PROVIDE SERVICE & MAKE CONNECTIONS TO ALL MECHANICAL EQUIPMENT AND SIGNS.
22. ELECTRICAL CONTRACTOR SHALL PROVIDE AND INSTALL, WITH POLES & BASES, ALL PARKING LOT LIGHTING AS SHOWN OR INDICATED ON THE SITE PLAN AS PER SPECIFICATIONS.
23. ALL WIRING CONDUCTORS WILL BE COPPER - NO ALUMINUM IS ALLOWED.
24. THE ELECTRICAL CONTRACTOR IS TO LEAVE HIS WORK IN PERFECT WORKING ORDER AND GUARANTEE SAME FOR A FULL 12 MONTHS AFTER FINAL ACCEPTANCE DATE.



Denis K. [Signature]
31 Oct 2003

PROFESSIONAL ENGINEERING & DESIGN SERVICES
ENERGY ELECTRICAL INDUSTRIAL COMMERCIAL RESIDENTIAL

THESE DOCUMENTS ARE THE PROPERTY OF ABACUS ENGINEERING INC. DO NOT COPY WITHOUT WRITTEN PERMISSION. UNAUTHORIZED DUPLICATION OF THESE PLANS IN WHOLE OR IN PART IS STRICTLY PROHIBITED. ALL APPLICABLE COPYRIGHT LAWS APPLY.

ABACUS ENGINEERING, INC.
2446-66-008
DRAWN BY: BUTLER
CHECKED BY: PHKLEIDH
DATE: 09-27-03
SCALE: 1/8" = 1'
PROJECT: THE POTTER'S HOUSE
312 NTH 8TH STREET KILLEEN, TEXAS
DRAWING NUMBER: 030927-E2
LIGHTING PLAN

EL.04