

241 SUPERIOR STREET
TOLEDO, OH 43604

OFFICE BUILDING FOR SALE OR LEASE
12,600 Square Feet Available



**SIGNATURE
ASSOCIATES**
KNOW SIGNATURE | KNOW RESULTS

FULL-SERVICE COMMERCIAL REAL ESTATE

OPPORTUNITY ZONE



GENERAL INFORMATION

Sale Price:	\$850,000
Lease Rate:	\$12.50/SF gross
Space Available:	Entire building plus basement is available
Building Size:	12,600 SF (approx. 4,200 SF per floor) *
Number of Stories:	3 – 3 finished floors, attic and basement
Year Constructed:	1927, renovated 2024
Condition:	Excellent – very well maintained.
Lot Dimensions:	39' 7" x 120'
Acreage:	0.105 acres
Closest Cross Street:	Madison Avenue
County:	Lucas
Zoning:	Downtown Commercial
Parking:	Street & garage
Curb Cuts:	None
Street:	2 lane, 2 way



* Lucas County AREIS gross building area = 23,600 SF

For more information, please contact:

MEGAN MALCZEWSKI, CCIM, SIOR
(419) 215 1008
mmalczewski@signatureassociates.com

NICHOLAS COOPER
(419) 249 6321 or (419) 258 0775
ncooper@signatureassociates.com

SIGNATURE ASSOCIATES
7150 Granite Circle, Suite 200
Toledo, Ohio 43617
www.signatureassociates.com

241 Superior Street, Toledo, OH 43604

Office Building For Sale or Lease

12,600
Square Feet
AVAILABLE

BUILDING SPECIFICATIONS

Exterior Walls:	Sandstone façade with granite/stucco and brick
Structural System:	Block & steel
Roof:	Flat rubber
Floors:	Concrete
Floor Coverings:	Carpet, tile and terrazzo
Ceiling Height:	9'
Basement:	Yes – sprinklered & storage available
Attic:	Yes – sprinklered
Heating:	(3) Gas fired boiler
Air Conditioning:	Central
Power:	3 phase, 240V, 600 AMP
Restrooms:	Per suite – see floor plans (plumbing in basement)
Security System:	Per suite
Sprinklers:	Yes
Signage:	Façade

BUILDING INFORMATION

Current Occupants:	Vacant
Occupancy Date:	Closing or at lease execution
Sign on Property:	Yes
Key Available:	Lockbox

LEASE DETAILS

Term:	Negotiable
Security Deposit:	1 month's rent
Options:	Negotiable
Improvement Allowance:	Negotiable
Tenant Responsible For:	In-suite janitorial, gas, and electric

2026 REAL ESTATE TAXES

TD:	12
Parcels:	15118
Assessor Number:	01-059-005
Total Annual Taxes:	\$10,404.60

Comments:

- The Huntington Center is the immediate neighbor.
- Surrounded by parking garages, surface lots and street parking.
- Floors and stairwell in first floor entry are terrazzo.
- Each floor is separately metered for gas and electric.
- Total net income after all expenses is approximately \$85,000.
- Total operating expenses are approx. \$32,000.
- A detailed income and expense statement is on file available with an acceptable Letter of Intent and/or Purchase Agreement.

Major Renovations Completed:

- 1st floor separate electric heating and cooling system. located in the ceiling.
- 2nd and 3rd floors front and side windows all new.
- 3rd floor restrooms are newer.
- \$50,000 invested in elevator hydraulic suspension.
- Marked handicap accessible entry with automatic doors.
- The property is in a Qualified Opportunity Zone.
For more information visit:
<https://development.ohio.gov/bs/bs-censustracts.htm>

For more information, please contact:

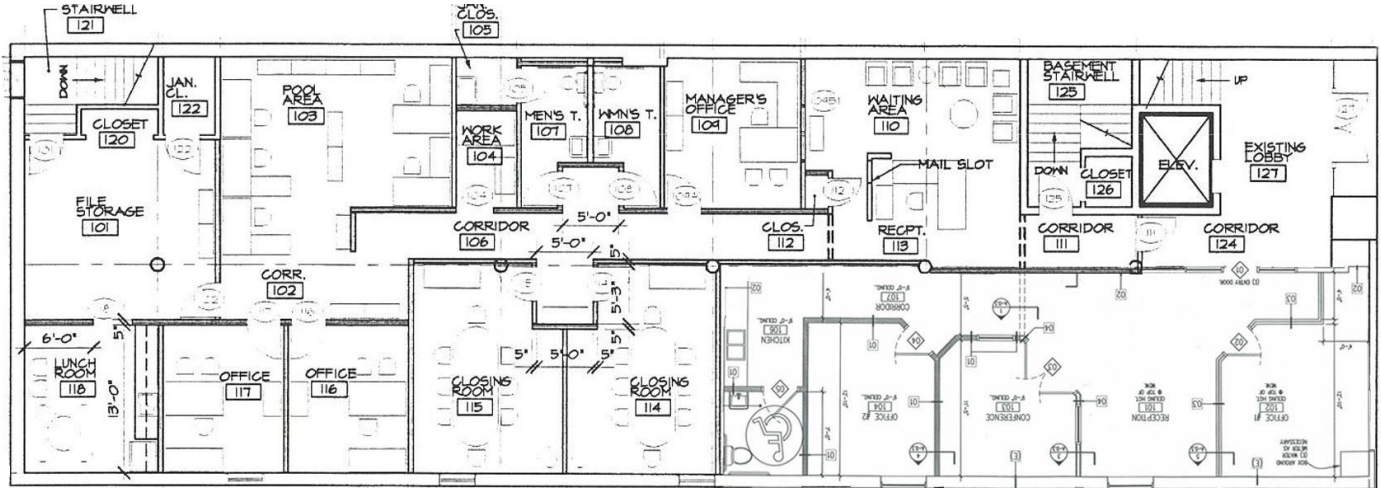
MEGAN MALCZEWSKI, CCIM, SIOR
(419) 215 1008
mmalczewski@signatureassociates.com

NICHOLAS COOPER
(419) 249 6321 or (419) 258 0775
ncooper@signatureassociates.com

SIGNATURE ASSOCIATES
7150 Granite Circle, Suite 200
Toledo, Ohio 43617
www.signatureassociates.com

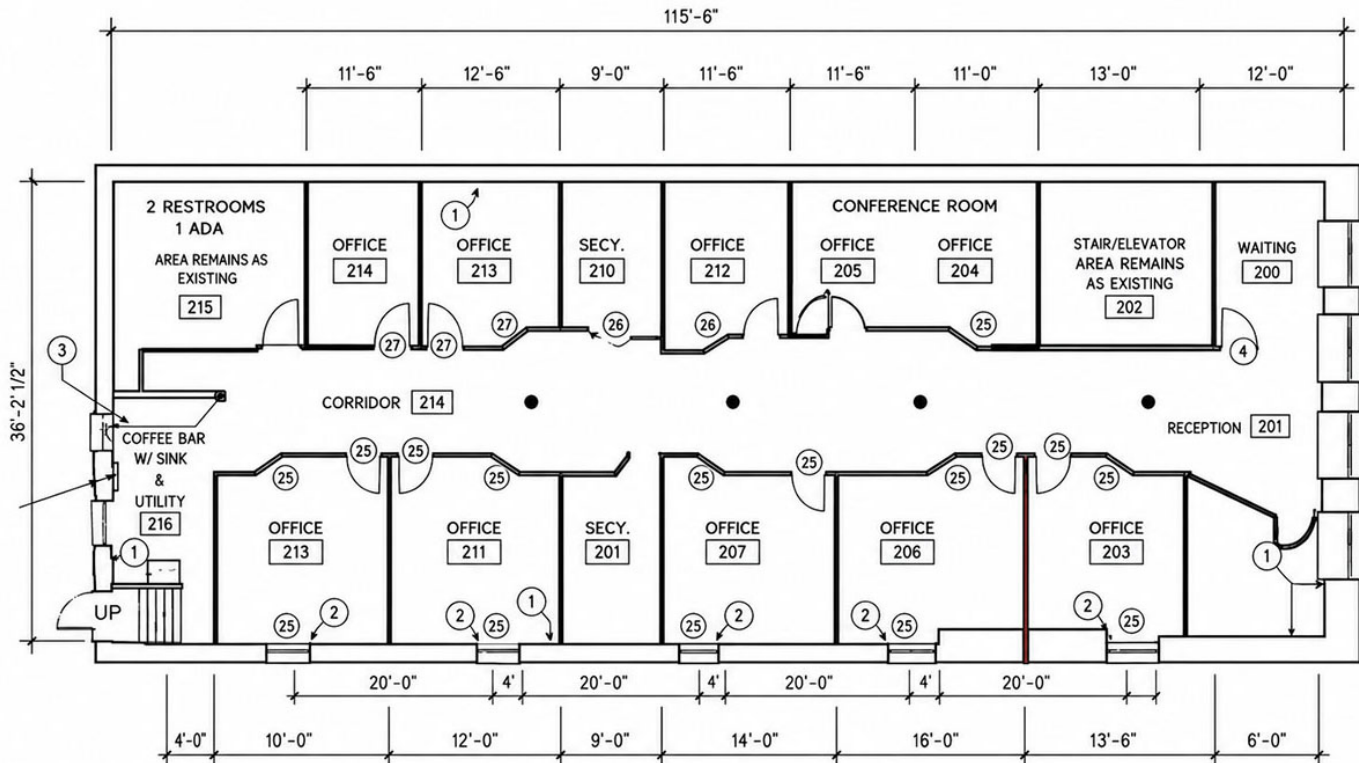
Floor Plan – 1st Floor

4,200 SF



Floor Plan – 2nd Floor

4,200 SF



For more information, please contact:

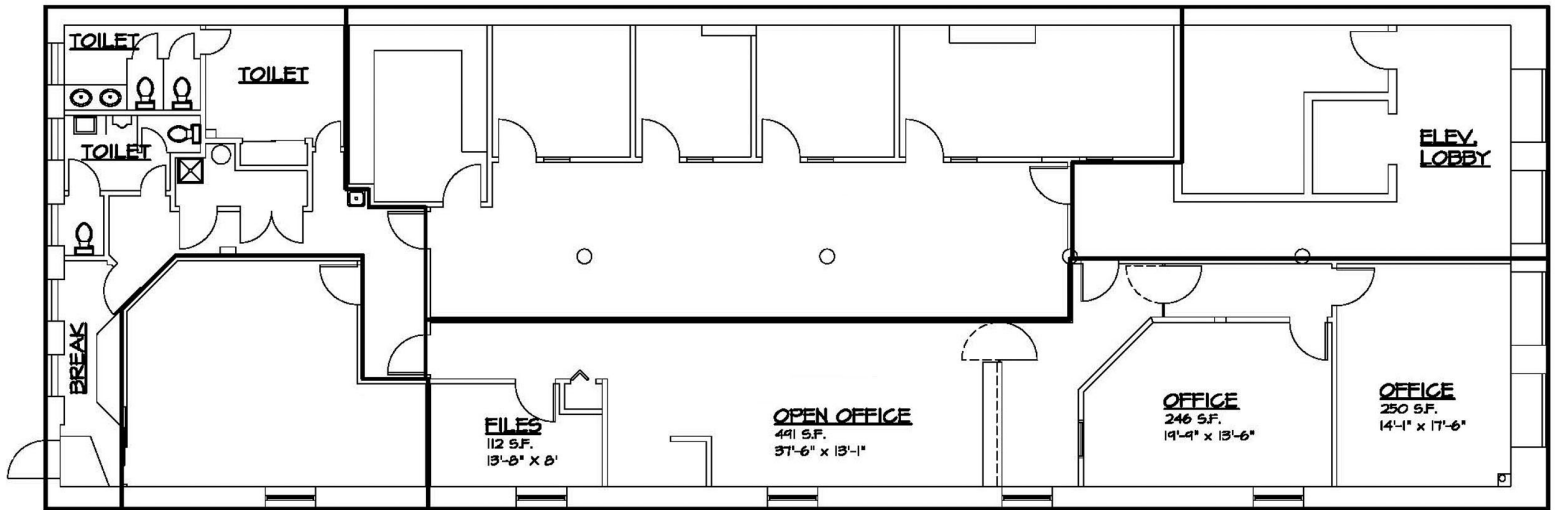
MEGAN MALCZEWSKI, CCIM, SIOR
(419) 215 1008
mmalczewski@signatureassociates.com

NICHOLAS COOPER
(419) 249 6321 or (419) 258 0775
ncooper@signatureassociates.com

SIGNATURE ASSOCIATES
7150 Granite Circle, Suite 200
Toledo, Ohio 43617
www.signatureassociates.com

Floor Plan – Third Floor

4,200 SF



For more information, please contact:

MEGAN MALCZEWSKI, CCIM, SIOR
(419) 215 1008
mmalczewski@signatureassociates.com

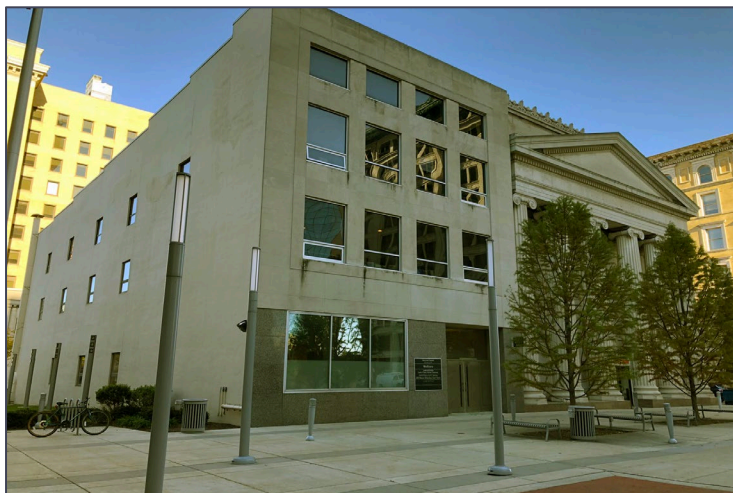
NICHOLAS COOPER
(419) 249 6321 or (419) 258 0775
ncooper@signatureassociates.com

SIGNATURE ASSOCIATES
7150 Granite Circle, Suite 200
Toledo, Ohio 43617
www.signatureassociates.com

241 Superior Street, Toledo, OH 43604

Office Building For Sale or Lease

12,600
Square Feet
AVAILABLE



For more information, please contact:

MEGAN MALCZEWSKI, CCIM, SIOR
(419) 215 1008
mmalczewski@signatureassociates.com

NICHOLAS COOPER
(419) 249 6321 or (419) 258 0775
ncooper@signatureassociates.com

SIGNATURE ASSOCIATES
7150 Granite Circle, Suite 200
Toledo, Ohio 43617
www.signatureassociates.com

241 Superior Street, Toledo, OH 43604

Office Building For Sale or Lease

12,600
Square Feet
AVAILABLE

Photos – 1st Floor



For more information, please contact:

MEGAN MALCZEWSKI, CCIM, SIOR
(419) 215 1008
mmalczewski@signatureassociates.com

NICHOLAS COOPER
(419) 249 6321 or (419) 258 0775
ncooper@signatureassociates.com

SIGNATURE ASSOCIATES
7150 Granite Circle, Suite 200
Toledo, Ohio 43617
www.signatureassociates.com

241 Superior Street, Toledo, OH 43604

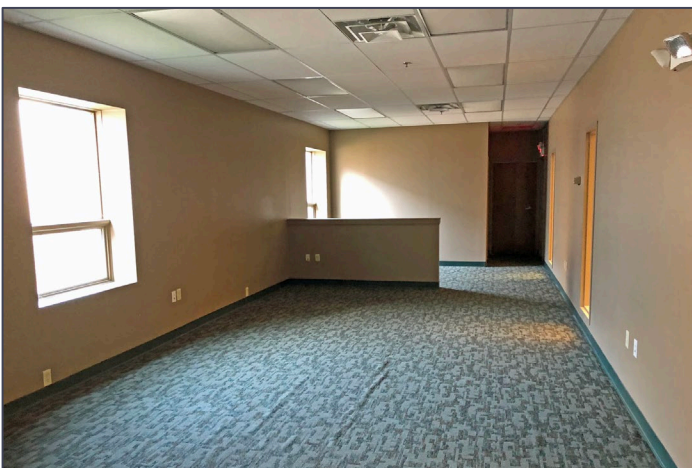
Office Building For Sale or Lease

12,600
Square Feet
AVAILABLE

Photos – 2nd floor



Photos – 3rd floor



For more information, please contact:

MEGAN MALCZEWSKI, CCIM, SIOR
(419) 215 1008
mmalczewski@signatureassociates.com

NICHOLAS COOPER
(419) 249 6321 or (419) 258 0775
ncooper@signatureassociates.com

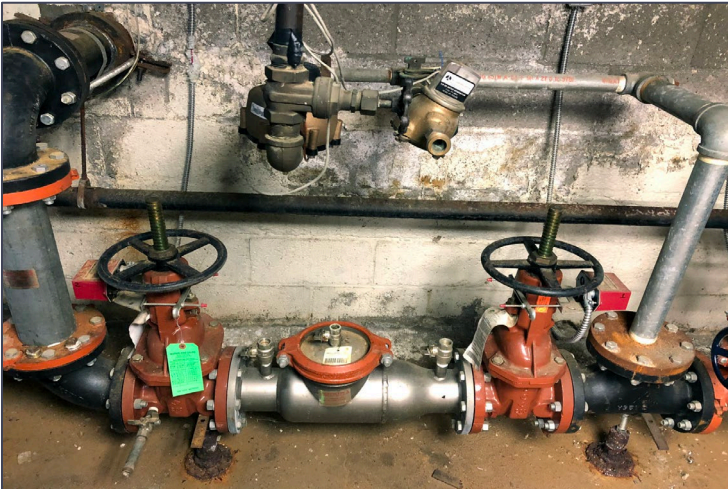
SIGNATURE ASSOCIATES
7150 Granite Circle, Suite 200
Toledo, Ohio 43617
www.signatureassociates.com

241 Superior Street, Toledo, OH 43604

Office Building For Sale or Lease

18,800
Square Feet
AVAILABLE

Photos – Basement



For more information, please contact:

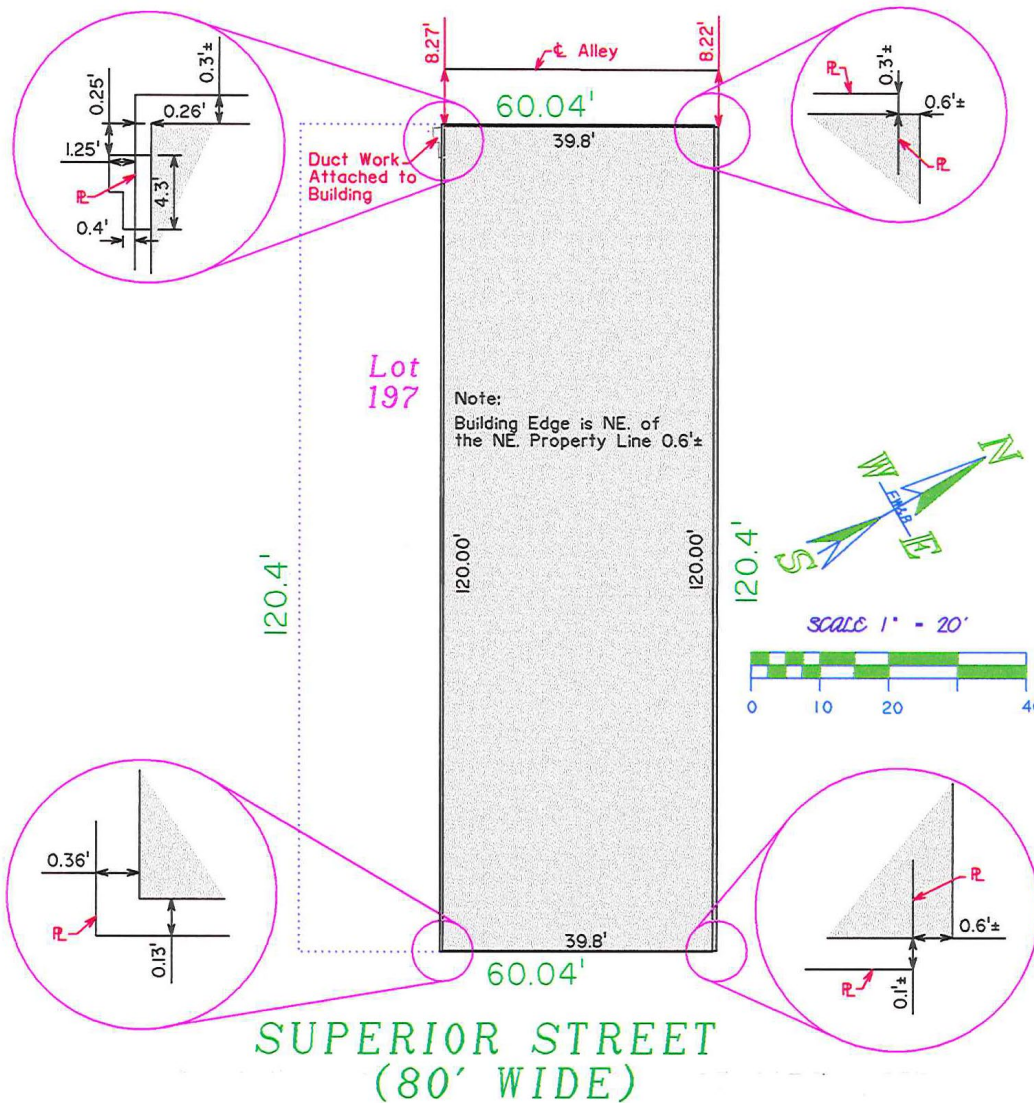
MEGAN MALCZEWSKI, CCIM, SIOR
(419) 215 1008
mmalczewski@signatureassociates.com

NICHOLAS COOPER
(419) 249 6321 or (419) 258 0775
ncooper@signatureassociates.com

SIGNATURE ASSOCIATES
7150 Granite Circle, Suite 200
Toledo, Ohio 43617
www.signatureassociates.com

Survey

Mortgage Location Survey for
Fifth Third Bank &
Superior Street, LLC
The Northeast 39 feet and 7 inches of Lot 197 in the Port Lawrence Division of the
City of Toledo, Lucas County, Ohio, in accordance with Volume A2 of Plats, page 42.



For more information, please contact:

MEGAN MALCZEWSKI, CCIM, SIOR

(419) 215 1008

mmalczewski@signatureassociates.com

NICHOLAS COOPER

(419) 249 6321 or (419) 258 0775

ncooper@signatureassociates.com

SIGNATURE ASSOCIATES

7150 Granite Circle, Suite 200

Toledo, Ohio 43617

www.signatureassociates.com

241 Superior Street, Toledo, OH 43604

Office Building For Sale or Lease

12,600
Square Feet
AVAILABLE



For more information, please contact:

MEGAN MALCZEWSKI, CCIM, SIOR
(419) 215 1008
mmalczewski@signatureassociates.com

NICHOLAS COOPER
(419) 249 6321 or (419) 258 0775
ncooper@signatureassociates.com

SIGNATURE ASSOCIATES
7150 Granite Circle, Suite 200
Toledo, Ohio 43617
www.signatureassociates.com