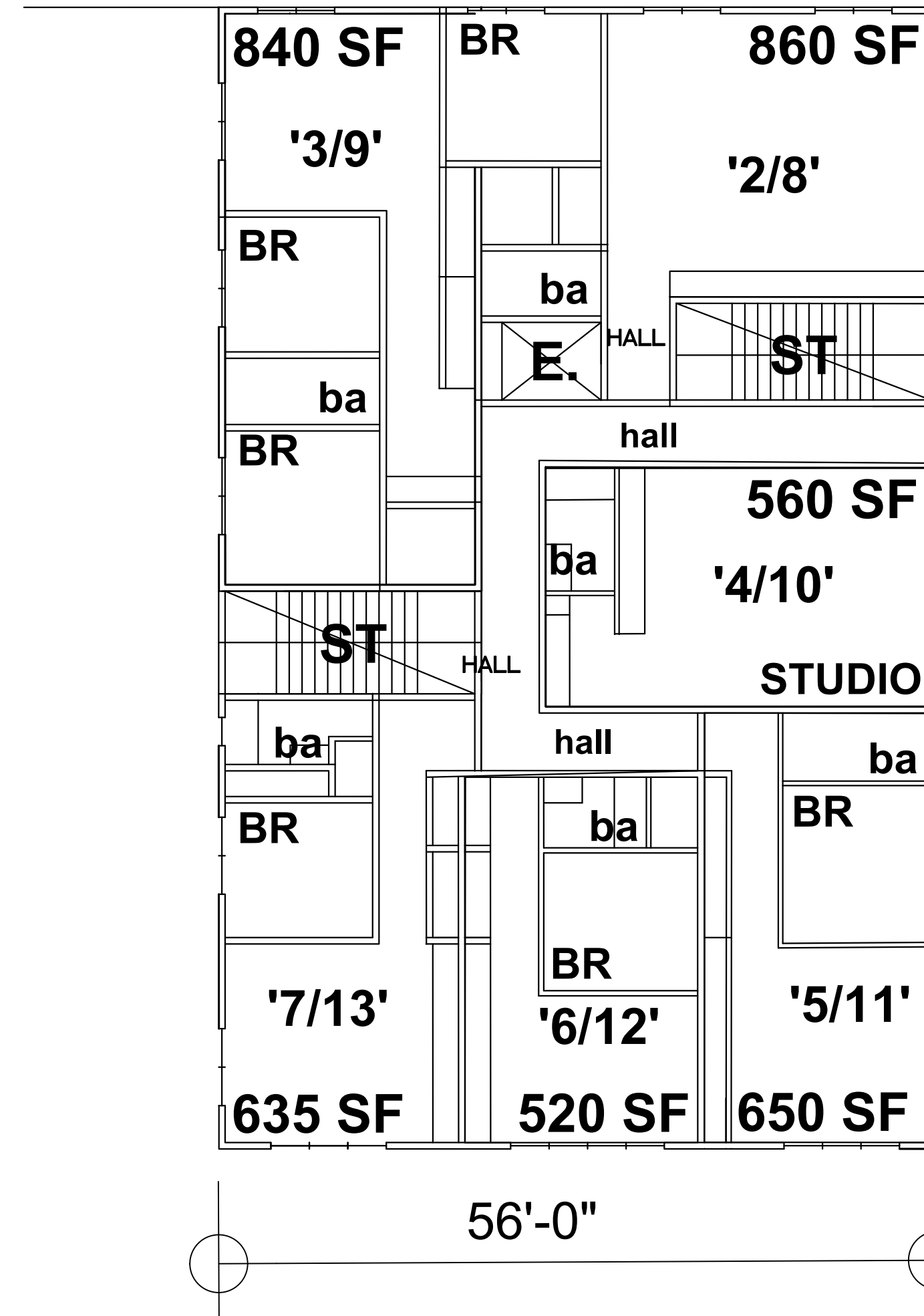
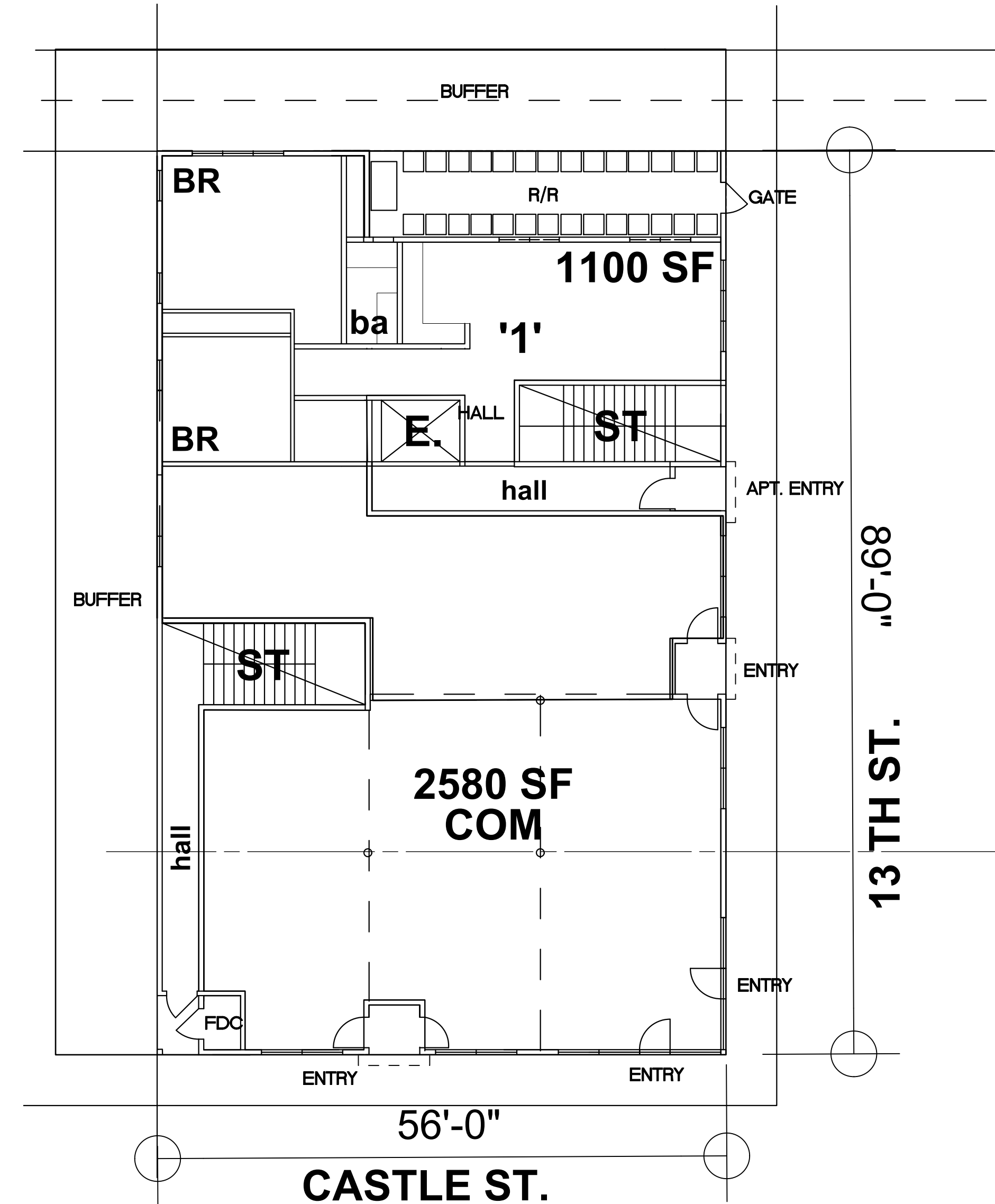


3 ROOF PLAN 4984 SF
A100 SCALE: 1" = 10'-0"



2 2ND + 3RD FLOOR PLANS 4984 SF
A100 SCALE: 1" = 10'-0"

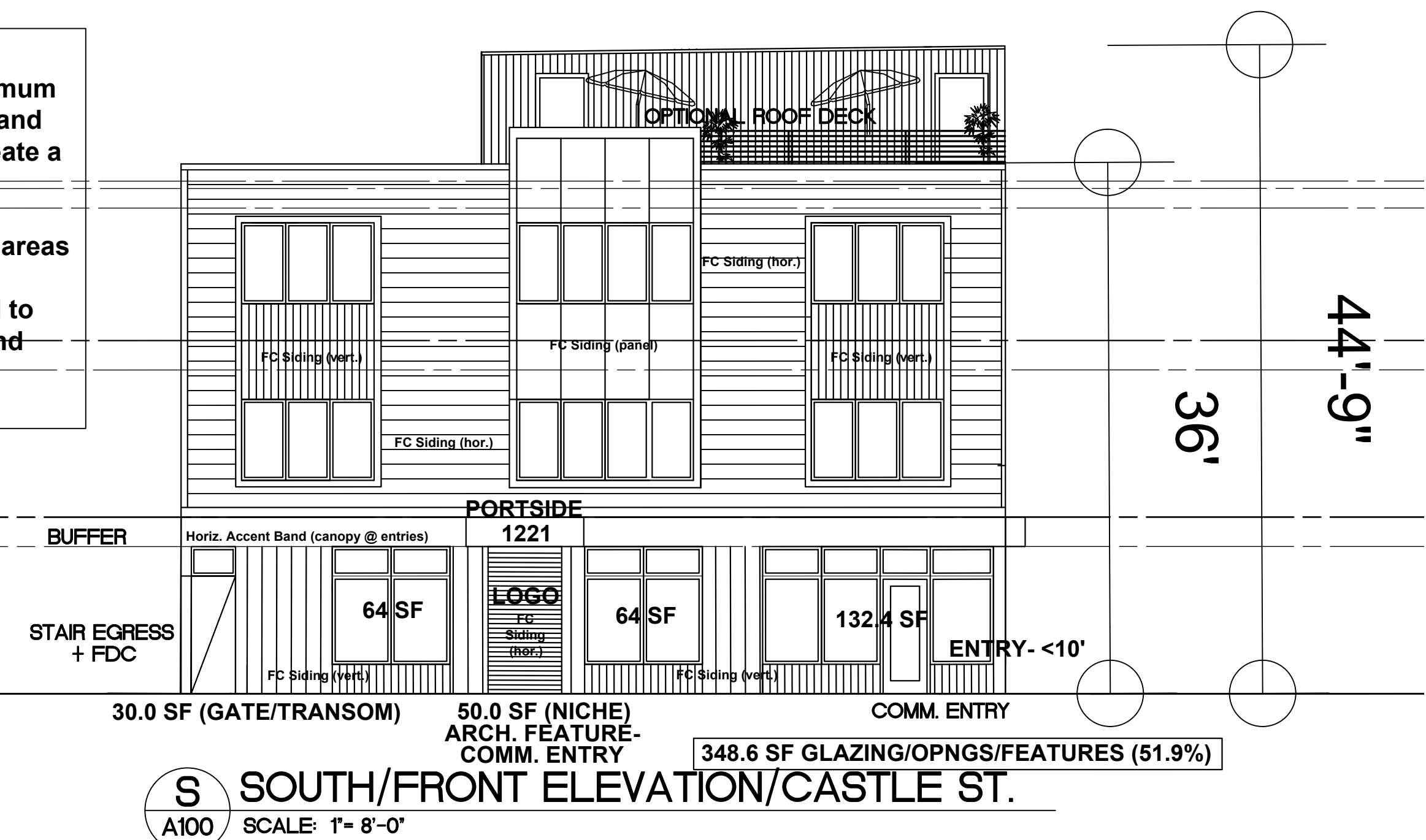


1 FIRST FLOOR PLAN 4984 SF
A100 SCALE: 1" = 10'-0"



E EAST/SIDE ELEVATION/13TH ST.
A100 SCALE: 1" = 8'-0"

GENERAL NOTES:
Glass shall be transparent with a maximum 15 percent reflectivity. Window tinting and interior affixed window shades that create a permanently opaque or translucent condition are prohibited. Spandrel or colored glass may be used in transom areas above door headers only. Features/doors/gates have been added to both facades to meet the 50% (front) and 30% side/secondary streetfront requirements. (per Sect. 18-44-A.1.d)



S SOUTH/FRONT ELEVATION/CASTLE ST.
A100 SCALE: 1" = 8'-0"