


550 N BRAND BOULEVARD, SUITE 900

GLENDALE, CA 91203

*11,419 SF Available
for Sublease*

KIDDER.COM

 **Kidder
Mathews**





Class A office sublease ideally located within walking distance of dining, retail, and cultural amenities on Brand Boulevard

Furniture, fixtures and equipment is negotiable

Mix of offices, conference rooms and cubes

Private large kitchen area

Common meeting and event space for 200 people

Common fitness center with showers and lockers



11,419 SF

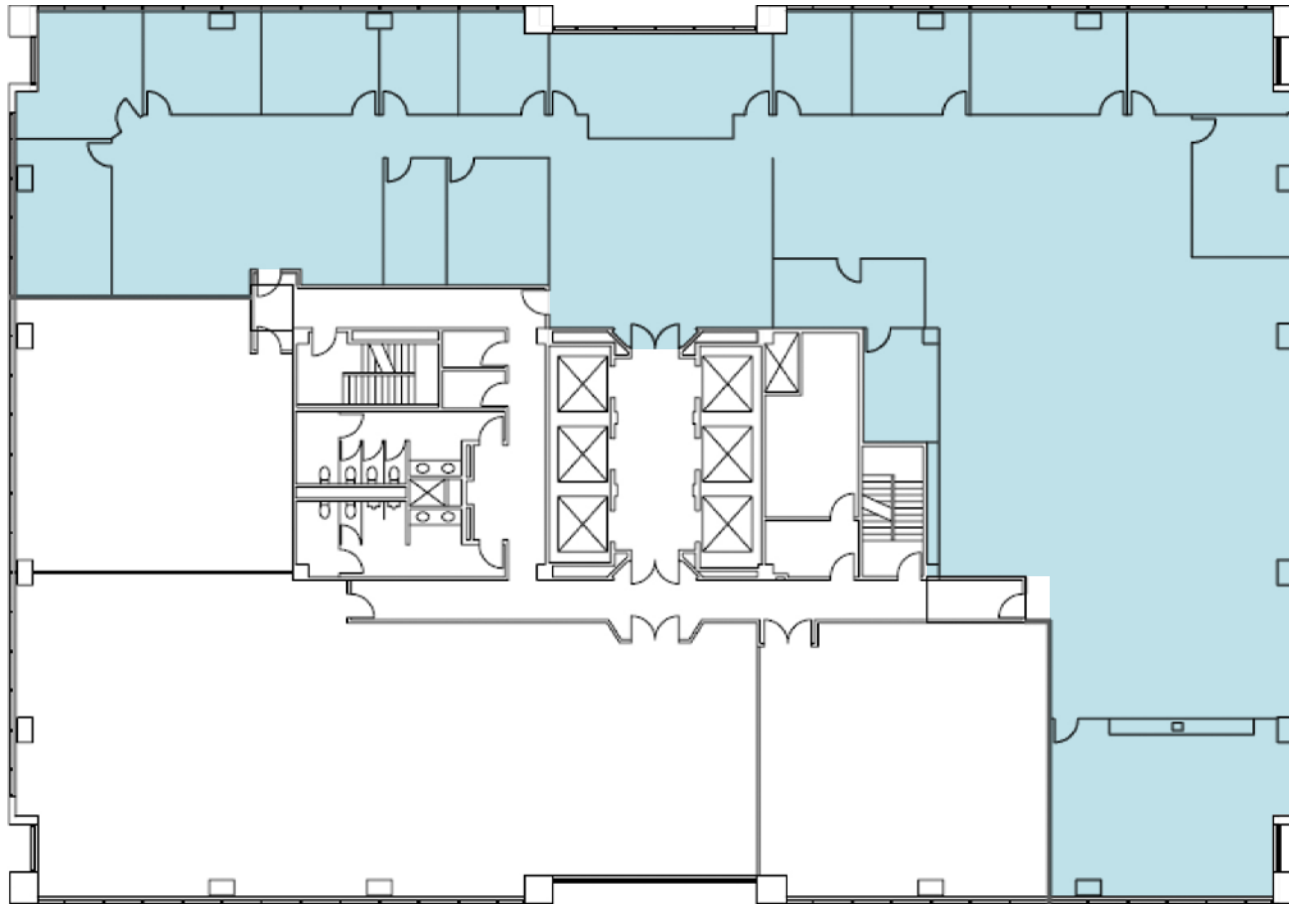
AVAILABLE

NEGOTIABLE

LEASE RATE (PER MONTH)



FLOOR PLAN



11,419 SF
AVAILABLE

NEGOTIABLE
LEASE RATE (PER MONTH)

11/30/2028
SUBLEASE EXPIRATION







550 N BRAND BOULEVARD, SUITE 900

*For more information,
please contact*

ALDO BOTTALLA
213.225.7243
aldo.bottalla@kidder.com
LIC N° 02014685

KIDDER.COM

This information supplied herein is from sources we deem reliable. It is provided without any representation, warranty, or guarantee, expressed or implied as to its accuracy. Prospective Buyer or Tenant should conduct an independent investigation and verification of all matters deemed to be material, including, but not limited to, statements of income and expenses. Consult your attorney, accountant, or other professional advisor. All Kidder Mathews designs are the sole property of Kidder Mathews. Branded materials and layouts are not authorized for use by any other firm or person.

