



7 Acres - Open Land | Avenal, CA

Property For Sale

1005 N Demaree Street
Visalia, California 93291
O | 559.754.3020
F | 559.429.4016
www.mdgre.com

GRAHAM & ASSOCIATES

Matt Graham
Lic# 01804235
www.mdgre.com

to learn more, visit: www.mdgre.com

PROPERTY DETAILS

Address: Hydril Ave and Road 36 | Avenal, CA

APN: 038-260-052

Land Available: 7.18 +/- Acres

Zoning Agriculture

Sales Price \$107,500.00

Additional Comments:

Open land parcel available for sale in Coalinga, California. The parcel is near Road 36 and Hydril Ave and is situated next to single family residences nearby the heart of Avenal. The city of Avenal is located minutes from the Interstate 5 Highway. Please call for further details.



Contact Broker:
Matt Graham
Lic# 01804235

to learn more, visit: www.mdgre.com

1005 N Demaree Street
Visalia, California 93291
O | 559.754.3020

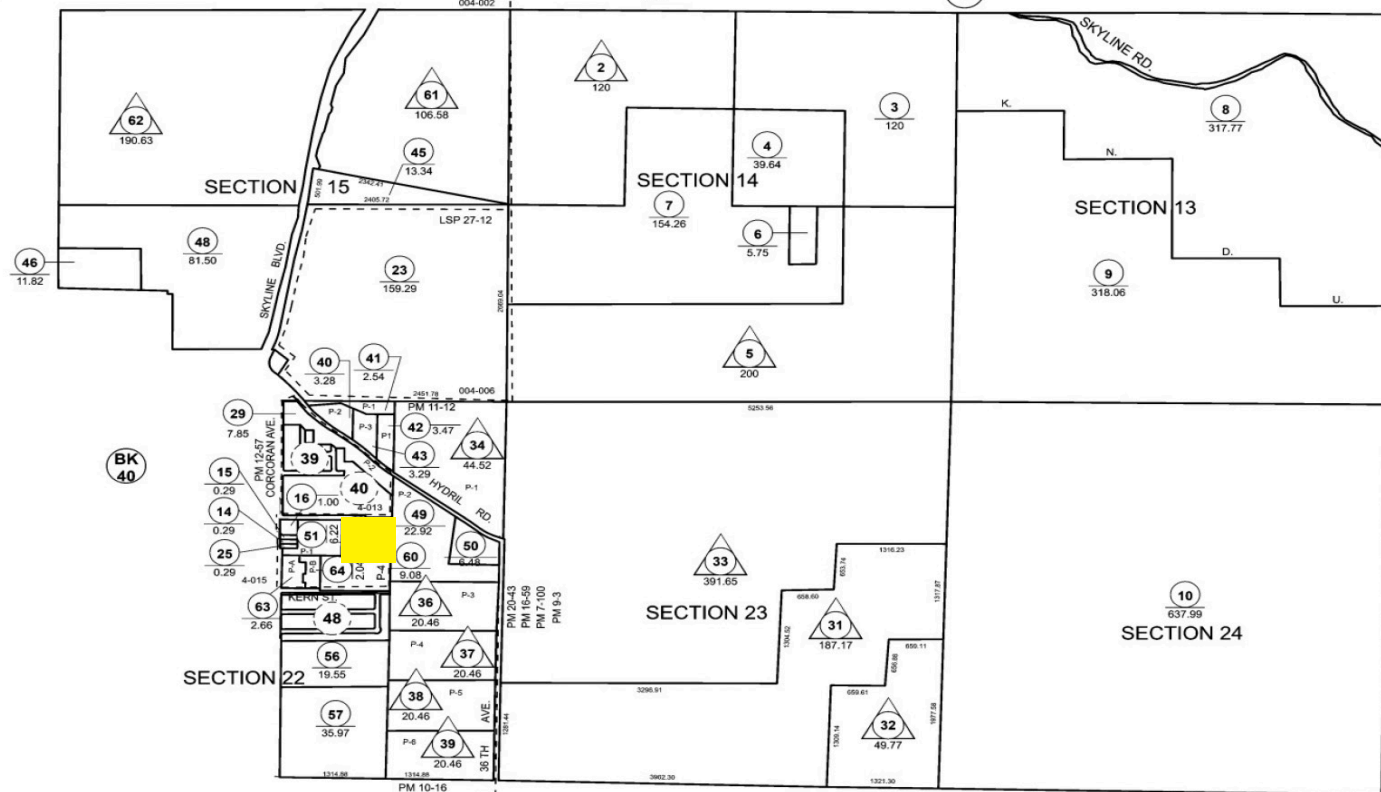
PLEASE NOTE: ALL INFORMATION AND REPRESENTATION MADE HEREIN, WHILE NOT GUARANTEED, HAVE BEEN SECURED FROM SOURCES WE BELIEVE TO BE RELIABLE, HOWEVER, THEY ARE NOT WARRANTED BY MATT GRAHAM & ASSOCIATES AND ARE SUBJECT TO CHANGE WITHOUT NOTICE.

TAX MAP

THIS MAP IS FOR ASSESSMENT PURPOSES ONLY.
IT IS NOT TO BE CONSTRUED AS PORTRAYING
LEGAL OWNERSHIP OF DIVISIONS OF LAND FOR
PURPOSES OF ZONING OR SUBDIVISION LAW.
FEBRUARY 2023

KINGS COUNTY ASSESSOR'S MAP SEC'S. 13,14, 15, 22, 23, & 24-22-17

38-26



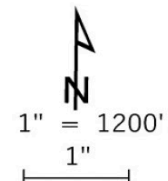
BK 40

25

Copyright © 1997, Kings County Assessor's Office
All Rights Reserved

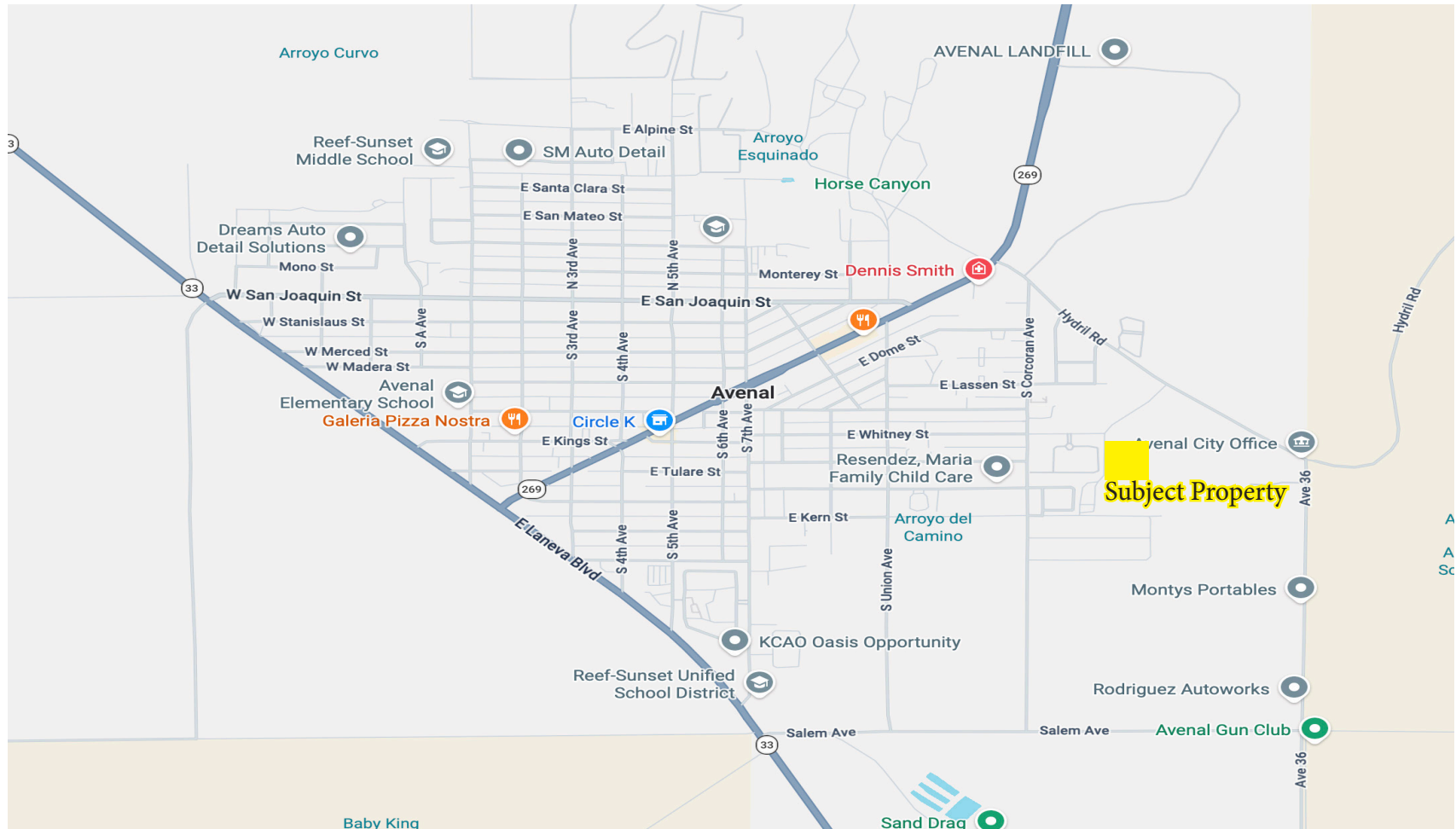


FARMLAND SECURITY ZONE



PLEASE NOTE: ALL INFORMATION AND REPRESENTATION MADE HEREIN, WHILE NOT GUARANTEED, HAVE BEEN SECURED FROM SOURCES WE BELIEVE TO BE RELIABLE, HOWEVER, THEY ARE NOT WARRANTED BY MATT GRAHAM & ASSOCIATES AND ARE SUBJECT TO CHANGE WITHOUT NOTICE.

LOCATION MAP



PLEASE NOTE: ALL INFORMATION AND REPRESENTATION MADE HEREIN, WHILE NOT GUARANTEED, HAVE BEEN SECURED FROM SOURCES WE BELIEVE TO BE RELIABLE, HOWEVER, THEY ARE NOT WARRANTED BY MATT GRAHAM & ASSOCIATES AND ARE SUBJECT TO CHANGE WITHOUT NOTICE.

