

Light Industrial/Flex Space | For Lease

Capitol Industrial Center North

9935 Horn Road | Sacramento, CA 95827



Contact Us:

Matt Susac, Lic 01979110
Senior Vice President
+1 916 781 4832
matt.susac@cbre.com

Todd Sanfilippo, Lic 01045162
Executive Vice President
+1 916 847 3206
todd.sanfilippo@cbre.com

Walter Smyth, Lic 00956946
Senior Vice President
+1 916 781 4843
walter.smyth@cbre.com

CBRE

CAPITOL INDUSTRIAL CENTER NORTH

9935 Horn Road | Sacramento, CA 95827

For Lease

PROPERTY FEATURES

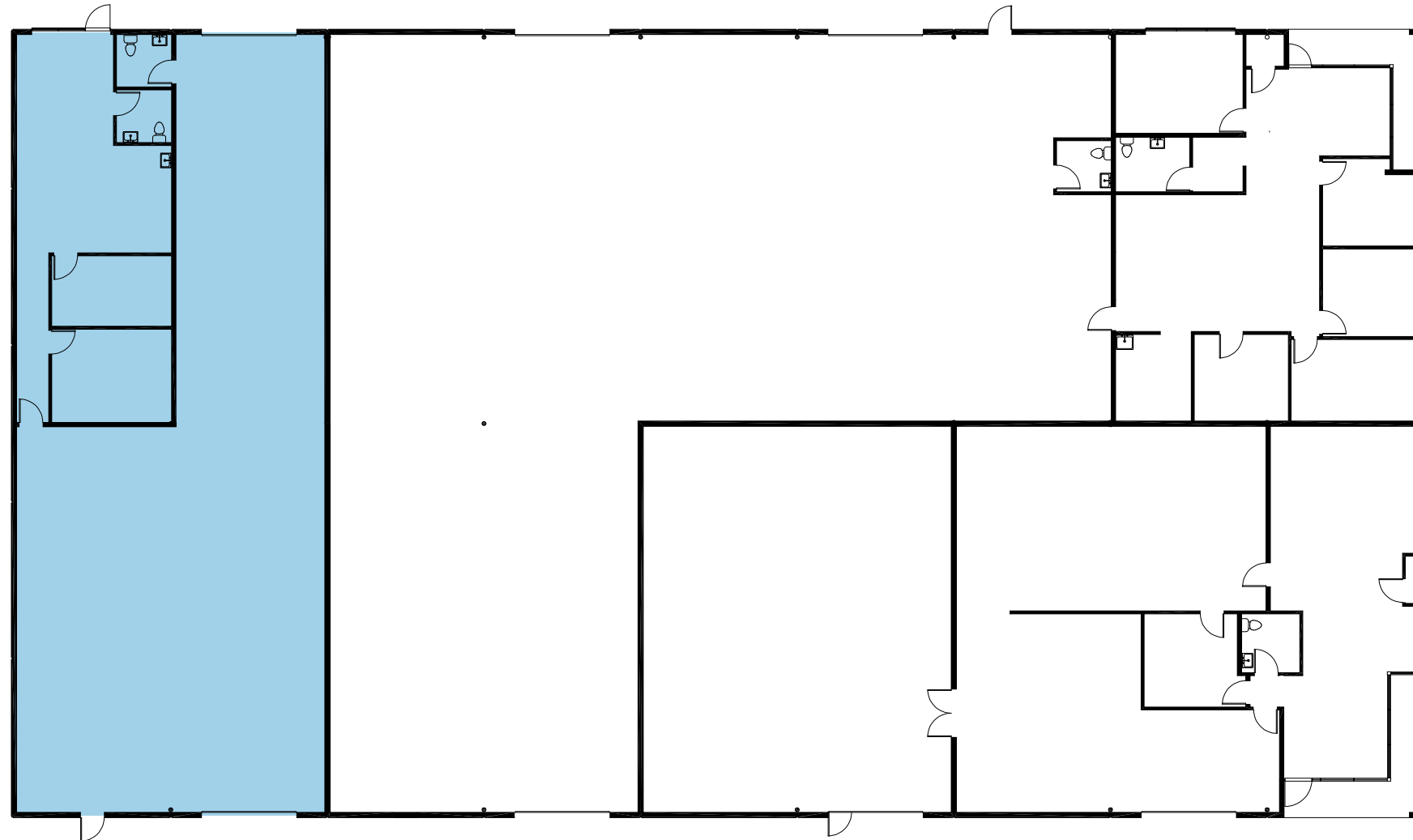
- Total Available: ±4,000 SF
- Office: ±951 SF
- Warehouse: ±3,049 SF
- GL Door: 2 (±10'x12')
- Professionally managed
- HVAC within office spaces
- Clear Height: ±14'-16'
- ±2.6/1,000 Parking Ratio
- Fire Sprinklers
- Zoning: OIMU (Office Industrial Mixed Use)
- Hwy 50 access via Bradshaw Rd. or Mather Field Rd.
- Access to public transportation
- Supported by numerous nearby restaurant/retail services



CAPITOL INDUSTRIAL CENTER NORTH

9935 Horn Road | Sacramento, CA 95827

SUITE E



SUITE FEATURES

Total	±4,000 SF
Office	±951 SF
Warehouse	±3,049 SF
Clear Height	±16'
Grade Level Doors	2 (±10'x12')

ALL MEASUREMENTS ARE APPROXIMATE.

CBRE

CAPITOL INDUSTRIAL CENTER NORTH

9935 Horn Road | Sacramento, CA 95827

For Lease



FOR MORE INFORMATION:

MATT SUSAC
+1 916 781 4832
matt.susac@cbre.com
Lic. 01979110

TODD SANFILIPPO
+1 916 847 3206
todd.sanfilippo@cbre.com
Lic. 01045162

WALTER SMYTH
+1 916 847 4843
walter.smyth@cbre.com
Lic. 00956946

CBRE
1512 Eureka Road, Ste. 100
Roseville, CA 95661
www.cbre.com

Surrounding Retail Amenities

CBRE