

# 1336 DILLINGHAM BLVD - UNIT A

HONOLULU, HI 96817



**FOR  
LEASE**



ChaneyBrooks

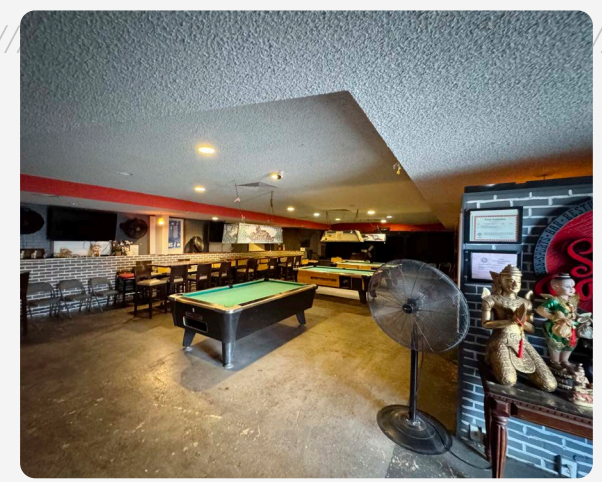
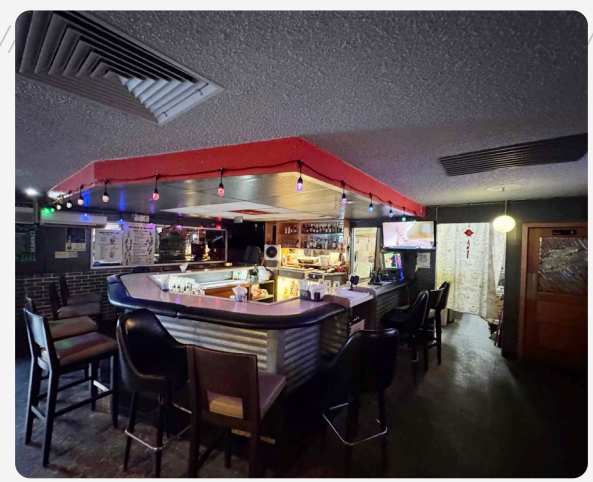


**1336 Dillingham Blvd - Unit A** is a 3,800 SF fully built-out restaurant space located along the highly trafficked Dillingham corridor. The unit features an existing bar and kitchen buildout, along with ample seating area for dining tables, allowing for an efficient and turnkey restaurant operation.

Situated in an IMX-1 zoned area, the space offers flexibility for a variety of commercial uses, strong street visibility, and convenient access.

## Property Summary

<b>ADDRESS</b>	1336 Dillingham Blvd, Unit A Honolulu, HI 96817
<b>SIZE</b>	3,800 SF
<b>BASE RENT</b>	\$1.91 SF/MO
<b>CAM</b>	\$0.75 SF/MO
<b>ZONING</b>	IMX-1
<b>PARKING</b>	11 Stalls





**1336  
DILLINGHAM BLVD**  
HONOLULU, HI 96817

CONTACT US FOR MORE INFORMATION //////////////////////////////////////

**ANTHONY PROVENZANO** (B), CCIM, SIOR  
HI LIC RB-22101  
+1 808 387 3444  
aprovenzano@chaneybrooks.com

**KELLY A. VEA** (S), CCIM  
HI LIC RS-79079  
+1 808 489 2703  
kvea@chaneybrooks.com

**TREVOR BLAKE** (S)  
HI LIC RS-87251  
+1 808 778 7409  
tblake@chaneybrooks.com

1440 Kapiolani Blvd, Suite 1010  
Honolulu, Hawaii 96814  
[www.chaneybrooks.com](http://www.chaneybrooks.com)



©2026 CUSHMAN & WAKEFIELD CHANEYBROOKS. NO WARRANTY OR REPRESENTATION, EXPRESS OR IMPLIED, IS MADE TO THE ACCURACY OR COMPLETENESS OF THE INFORMATION CONTAINED HEREIN, AND SAME IS SUBMITTED SUBJECT TO ERRORS, OMISSIONS, CHANGE OF PRICE, RENTAL OR OTHER CONDITIONS, WITHDRAWAL WITHOUT NOTICE, AND TO ANY SPECIAL LISTING CONDITIONS IMPOSED BY THE PROPERTY OWNER(S). AS APPLICABLE, WE MAKE NO REPRESENTATION AS TO THE CONDITION OF THE PROPERTY (OR PROPERTIES) IN QUESTION.



ChaneyBrooks