

ROALTY 1 PROPERTIES LTD

5807 Star Lane

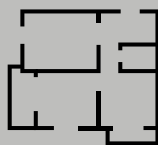
PRIME GALLERIA INDUSTRIAL SPACE



PROPERTY DESCRIPTION

This modern industrial facility offers ±8,471 SF of versatile space with five high-bay doors and a large, secured concrete yard. The building features clean exterior finishes, efficient warehouse layout, and excellent accessibility for trucks and equipment. Ideally located in the Galleria area, the property provides quick access to major highways and is well-suited for storage, distribution, automotive, or light industrial use.

PROPERTY HIGHLIGHTS



~8,471 SF





5 HIGH-BAY
DOORS



RENTAL RATE
\$15/SF/YR NNN

CONTACT US FOR MORE INFO.

 832-347-8326

 Michaelroa@teamautoplex.com