



For Lease | Office Spaces in Central Business District

928 Nuuanu Avenue Honolulu, HI 96817

HAWAII TIMES BUILDING

INVESTMENT SUMMARY

TMK:	1-7-2-40-11
Zoning:	BMX-4
Area:	Central Business District Downtown, Honolulu
Base Rent:	Negotiable
Operating Expenses:	\$1.45 PSF/Mo (estimated)
Term:	1+ Years
Total Floors:	6 Floors
Other:	-Historic Office Building with open city views -24 Hour Secured Building -Move in ready with Flexible Layout

PROPERTY DESCRIPTION

NAI CBI Hawaii proudly presents the Hawaii Times Building on 928 Nuuanu Ave. This property is located in the Central Business District in Chinatown. There's lots of foot traffic as the neighboring businesses are popular spots known to locals such as Murphy's Bar and Grill, and The Pig and the Lady. The office is in walking distance to some of the best restaurants in Honolulu, residential high rises, financial institutions, theatres and many local favorites.



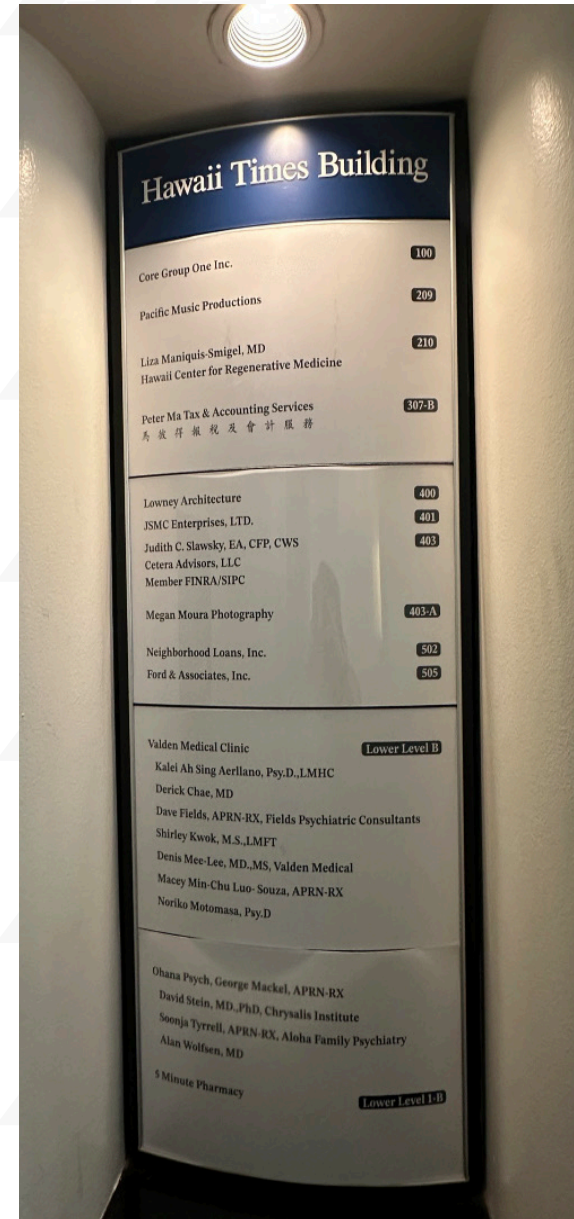
Vanessa Kop (B)
RB-20654
808-256-0370
vkop@cbi-hawaii.com

Laren Eustace (S)
RS-81401
808-354-9025
leustace@cbi-hawaii.com

NAI CBI Hawaii

1712 S. King Street Suite 201
Honolulu, HI 96826
808.942.7100 | www.cbi-hawaii.com





Vanessa Kop (B)

RB-20654
808-256-0370

vkop@cbi-hawaii.com

Laren Eustace (S)

RS-81401
808-354-9025

leustace@cbi-hawaii.com

NAI CBI Hawaii

1712 S. King Street Suite 201
Honolulu, HI 96826

808.942.7100 | www.cbi-hawaii.com



SPACES

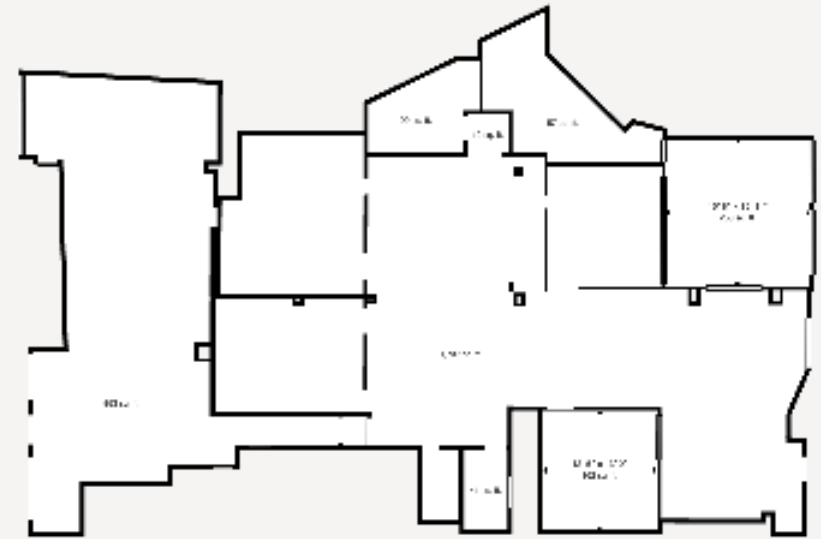
Suite 100: ± 3,412 SF
Reception | Private Offices | Kitchen | Restrooms

Suite 200: ± 2,913 SF
Reception | Storage | Library | Private Offices |
Kitchenette

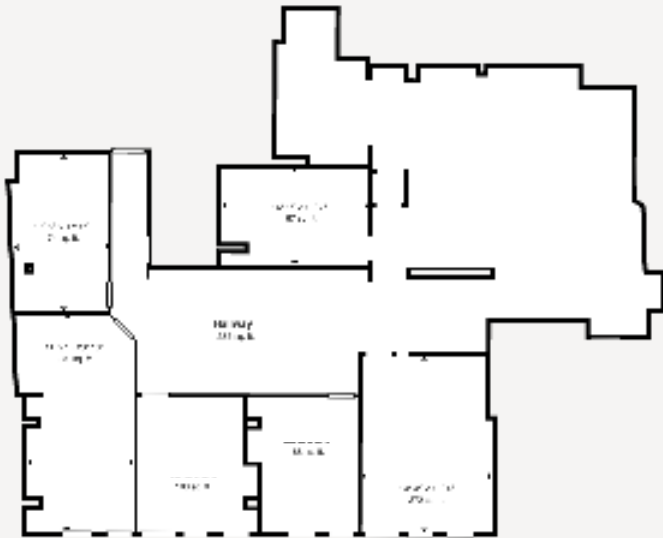
Suite 201: ± 547 SF
Large Office | Sink | Natural Light | High Ceilings

Suite 202: ± 650 SF
Private Entrance

Suite 307A: ± 852 SF Interior Office | Sink



Suite 100



Suite 200



Suite 307A



Vanessa Kop (B)
RB-20654
808-256-0370
vkop@cbi-hawaii.com

Laren Eustace (S)
RS-81401
808-354-9025
leustace@cbi-hawaii.com

Scan the QR
code for
**VIRTUAL
TOUR**

NAI CBI Hawaii
1712 S. King Street Suite 201
Honolulu, HI 96826
808.942.7100 | www.cbi-hawaii.com





SUITE 202

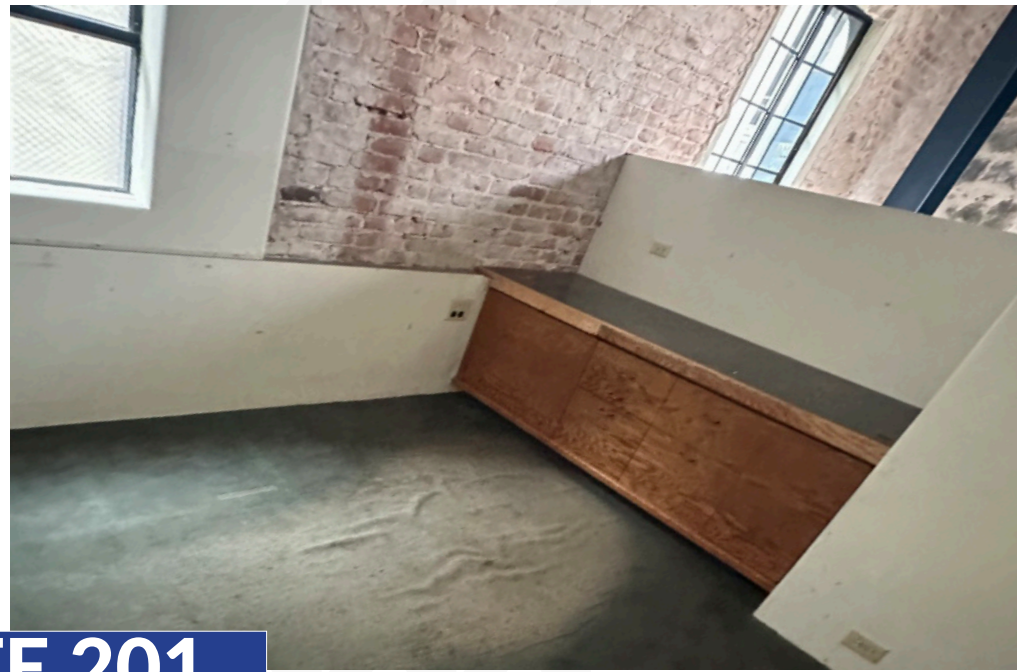


Vanessa Kop (B)
RB-20654
808-256-0370
vkop@cbi-hawaii.com

Laren Eustace (S)
RS-81401
808-354-9025
leustace@cbi-hawaii.com

NAI CBI Hawaii
1712 S. King Street Suite 201
Honolulu, HI 96826
808.942.7100 | www.cbi-hawaii.com





SUITE 201



Vanessa Kop (B)
RB-20654
808-256-0370
vkop@cbi-hawaii.com

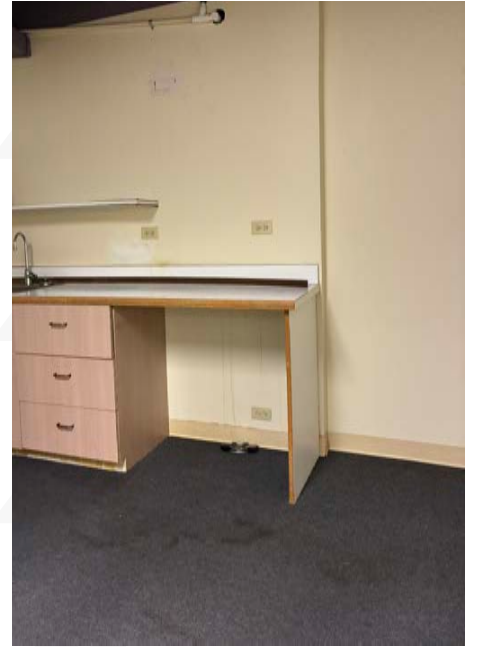
Laren Eustace (S)
RS-81401
808-354-9025
leustace@cbi-hawaii.com

NAI CBI Hawaii
1712 S. King Street Suite 201
Honolulu, HI 96826
808.942.7100 | www.cbi-hawaii.com





SUITE 307A



Vanessa Kop (B)
RB-20654
808-256-0370
vkop@cbi-hawaii.com

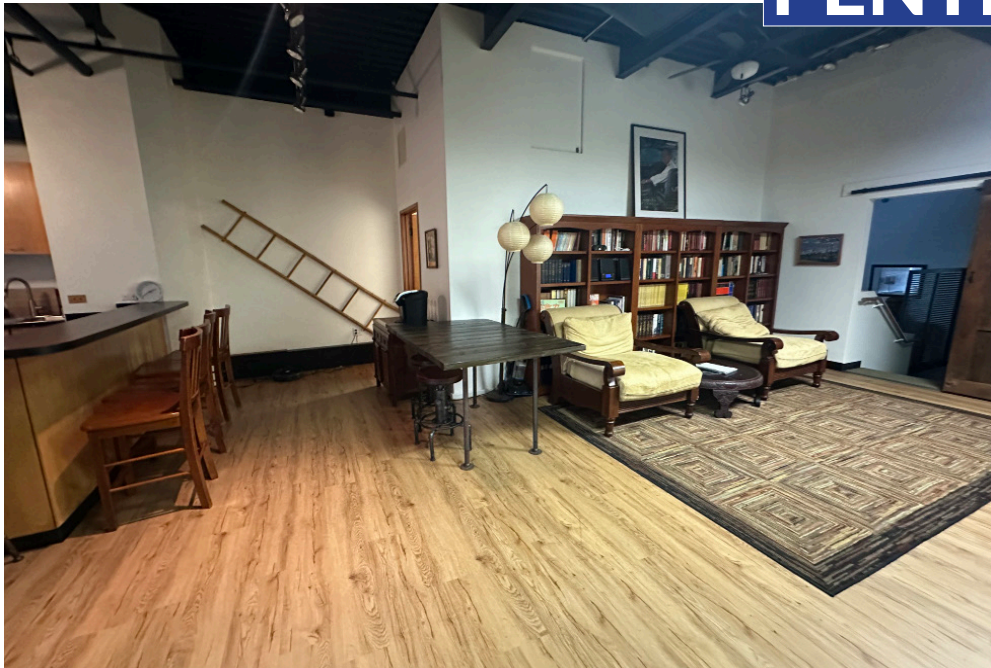
Laren Eustace (S)
RS-81401
808-354-9025
leustace@cbi-hawaii.com

NAI CBI Hawaii
1712 S. King Street Suite 201
Honolulu, HI 96826
808.942.7100 | www.cbi-hawaii.com





PENTHOUSE



NAI
CBI Hawaii
Vanessa Kop (B)
RB-20654
808-256-0370
vkop@cbi-hawaii.com

Laren Eustace (S)
RS-81401
808-354-9025
leustace@cbi-hawaii.com

NAI CBI Hawaii
1712 S. King Street Suite 201
Honolulu, HI 96826
808.942.7100 | www.cbi-hawaii.com





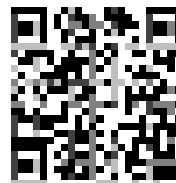
SUITE 100



Vanessa Kop (B)
RB-20654
808-256-0370
vkop@cbi-hawaii.com

Laren Eustace (S)
RS-81401
808-354-9025
leustace@cbi-hawaii.com

Scan the QR
code for
**VIRTUAL
TOUR**



NAI CBI Hawaii
1712 S. King Street Suite 201
Honolulu, HI 96826
808.942.7100 | www.cbi-hawaii.com





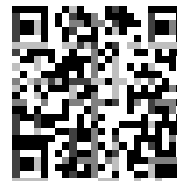
SUITE 100



Vanessa Kop (B)
RB-20654
808-256-0370
vkop@cbi-hawaii.com

Laren Eustace (S)
RS-81401
808-354-9025
leustace@cbi-hawaii.com

Scan the QR
code for
**VIRTUAL
TOUR**



NAI CBI Hawaii
1712 S. King Street Suite 201
Honolulu, HI 96826
808.942.7100 | www.cbi-hawaii.com





SUITE 200



Vanessa Kop (B)
RB-20654
808-256-0370
vkop@cbi-hawaii.com

Laren Eustace (S)
RS-81401
808-354-9025
leustace@cbi-hawaii.com

Scan the QR
code for
**VIRTUAL
TOUR**

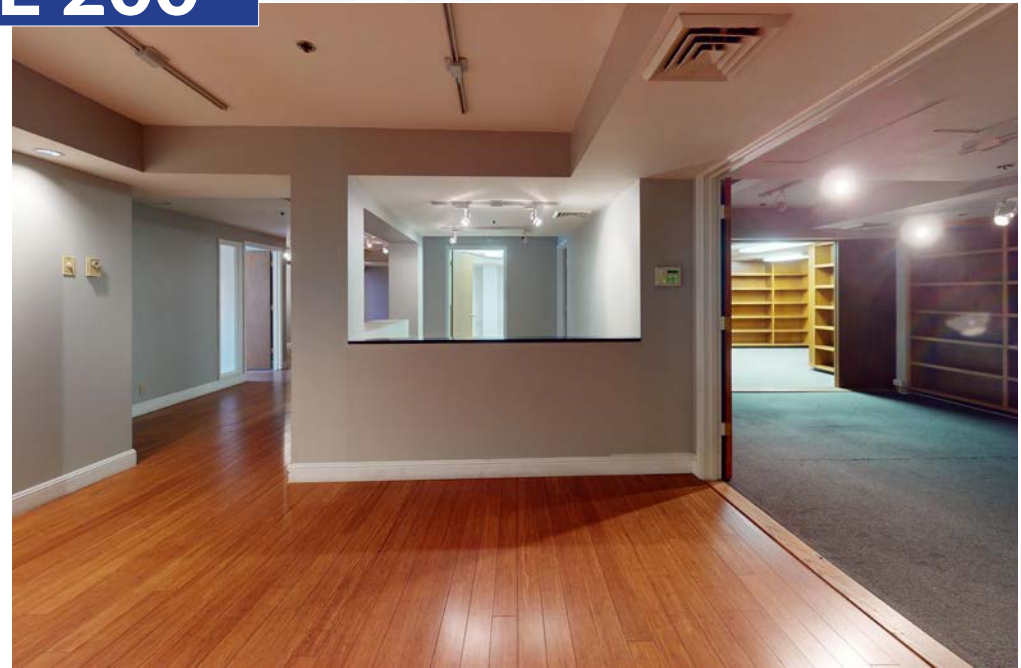


NAI CBI Hawaii
1712 S. King Street Suite 201
Honolulu, HI 96826
808.942.7100 | www.cbi-hawaii.com





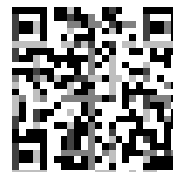
SUITE 200



Vanessa Kop (B)
RB-20654
808-256-0370
vkop@cbi-hawaii.com

Laren Eustace (S)
RS-81401
808-354-9025
leustace@cbi-hawaii.com

Scan the QR
code for
**VIRTUAL
TOUR**



NAI CBI Hawaii
1712 S. King Street Suite 201
Honolulu, HI 96826
808.942.7100 | www.cbi-hawaii.com

