



COTTONWOOD
CORPORATE CENTER

NOW LEASING



CUSHMAN &
WAKEFIELD

Hines



COTTONWOOD CORPORATE CENTER

COTTONWOOD CORPORATE CENTER

is one of Salt Lake City's most prestigious locations. Nestled at the foot of the Wasatch Mountains, the project overlooks nearly the entire Salt Lake Valley. Easy access to I-215 freeway and just 20 minutes away from downtown Salt Lake City, Park City and the Salt Lake City International Airport. Four ski resorts are also just minutes away, and nearby are several premier hotels, many popular restaurants and Old Mill Golf Course.

VIRTUAL TOUR CENTER



BUILDING 9 LOBBY

BUILDING 10/11 LOBBY

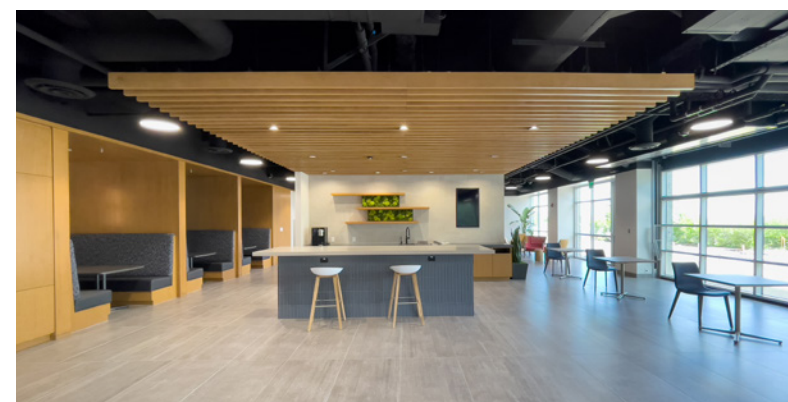
FITNESS CENTER

MEN'S LOCKERS

WOMEN'S LOCKERS



AMENITY STRONG



NEW CONSTRUCTION
CONFERENCE CENTER • TENANT LOUNGE
FITNESS CENTER • PATIO AREA

18 MINUTES TO
DOWNTOWN
SALT LAKE CITY

22 MINUTES TO
DOWNTOWN
PARK CITY

20 MINUTES TO
SALT LAKE CITY
INTERNATIONAL
AIRPORT

20 MINUTES TO
MAJOR SKI RESORTS
& OUTDOOR ACTIVITIES



LEASING INFORMATION

DANA BAIRD, CCIM
Executive Managing Director
(801) 303 5526
dana.baird@cushwake.com

MIKE RICHMOND
Executive Managing Director
(801) 303 5434
mike.richmond@cushwake.com

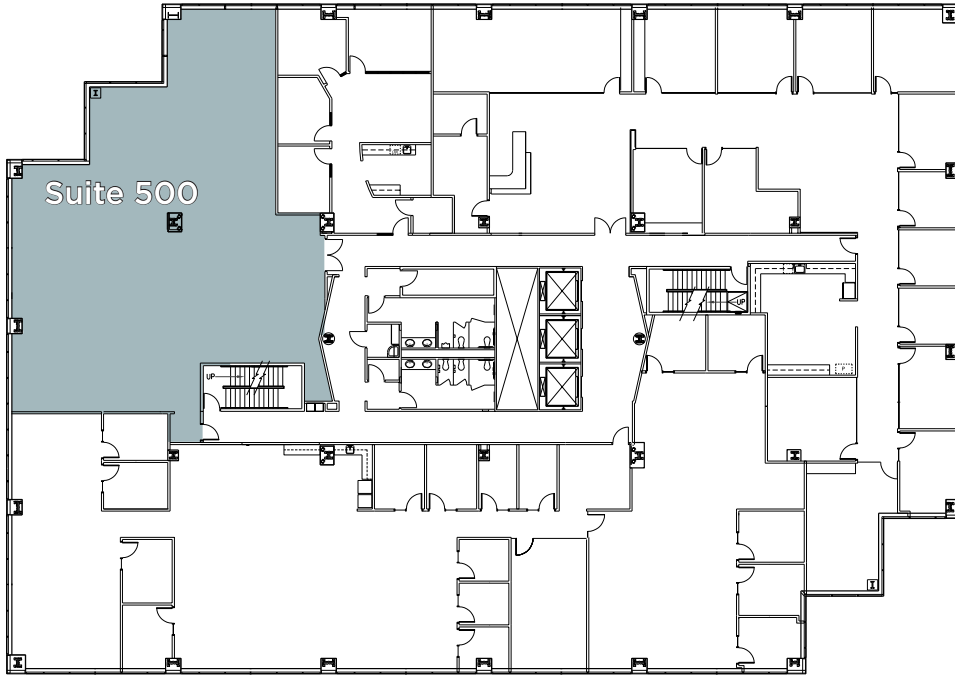
170 South Main Street, Suite 1600
Salt Lake City, Utah 84101
+1 801 322 2000
cushmanwakefield.com



©2022 Cushman & Wakefield. All rights reserved. The information contained in this communication is strictly confidential. This information has been obtained from sources believed to be reliable but has not been verified. No warranty or representation, express or implied, is made as to the condition of the property (or properties) referenced herein or as to the accuracy or completeness of the information contained herein, and same is submitted subject to errors, omissions, change of price, rental or other conditions, withdrawal without notice, and to any special listing conditions imposed by the property owner(s). Any projections, opinions or estimates are subject to uncertainty and do not signify current or future property performance. 1 - Projects\Richmond, Mike\1 - Flyers\Cottonwood Corporate Center_2022BookVersion

BUILDING EIGHT

2755 EAST COTTONWOOD PARKWAY
COTTONWOOD HEIGHTS, UT



Floor **5**

Suite 500
4,771 RSF



LEASING INFORMATION
DANA BAIRD, CCIM
Executive Managing Director
(801) 303 5526
dana.baird@cushwake.com

MIKE RICHMOND
Executive Managing Director
(801) 303 5434
mike.richmond@cushwake.com



170 South Main Street, Suite 1600
Salt Lake City, Utah 84101
+1 801 322 2000 cushmanwakefield.com

BUILDING NINE

2795 EAST COTTONWOOD PARKWAY
COTTONWOOD HEIGHTS, UT



Floor 1

Suite 100
4,177 RSF

Suite 115
2,001 RSF

Suite 120
4,503 RSF

LEASING INFORMATION

DANA BAIRD, CCIM
Executive Managing Director
(801) 303 5526
dana.baird@cushwake.com

MIKE RICHMOND
Executive Managing Director
(801) 303 5434
mike.richmond@cushwake.com

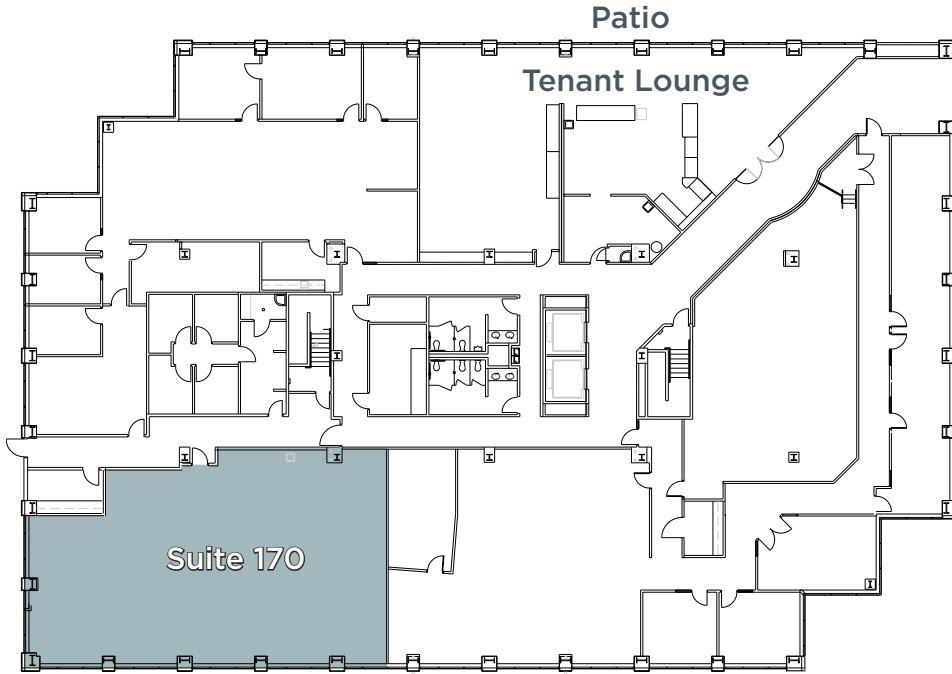


170 South Main Street, Suite 1600
Salt Lake City, Utah 84101
+1 801 322 2000 cushmanwakefield.com



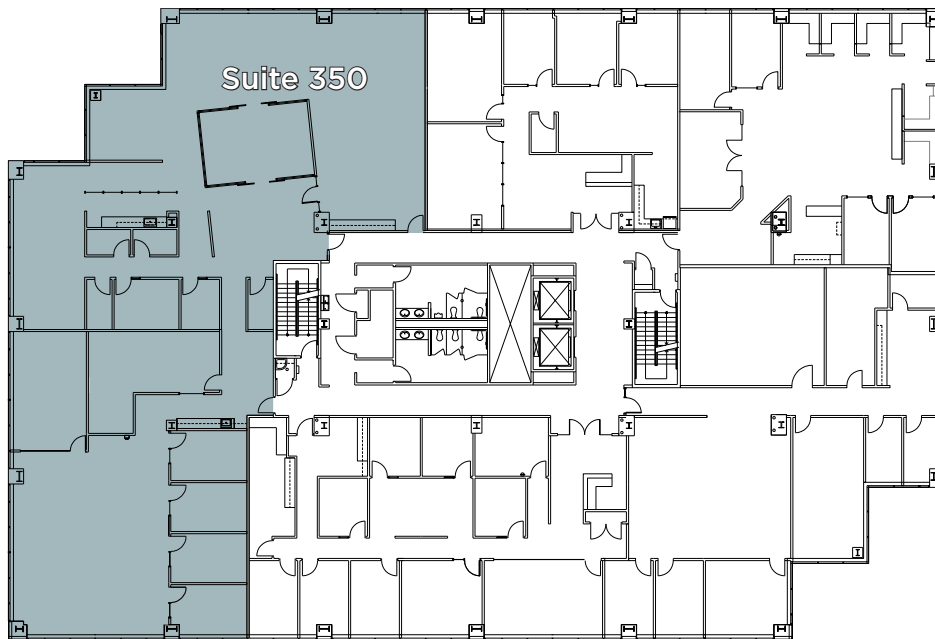
BUILDING TEN

2825 EAST COTTONWOOD PARKWAY
COTTONWOOD HEIGHTS, UT



Floor 1

Suite 170
3,882 RSF



Floor 3

Suite 350
8,573 RSF



LEASING INFORMATION

DANA BAIRD, CCIM
Executive Managing Director
(801) 303 5526
dana.baird@cushwake.com

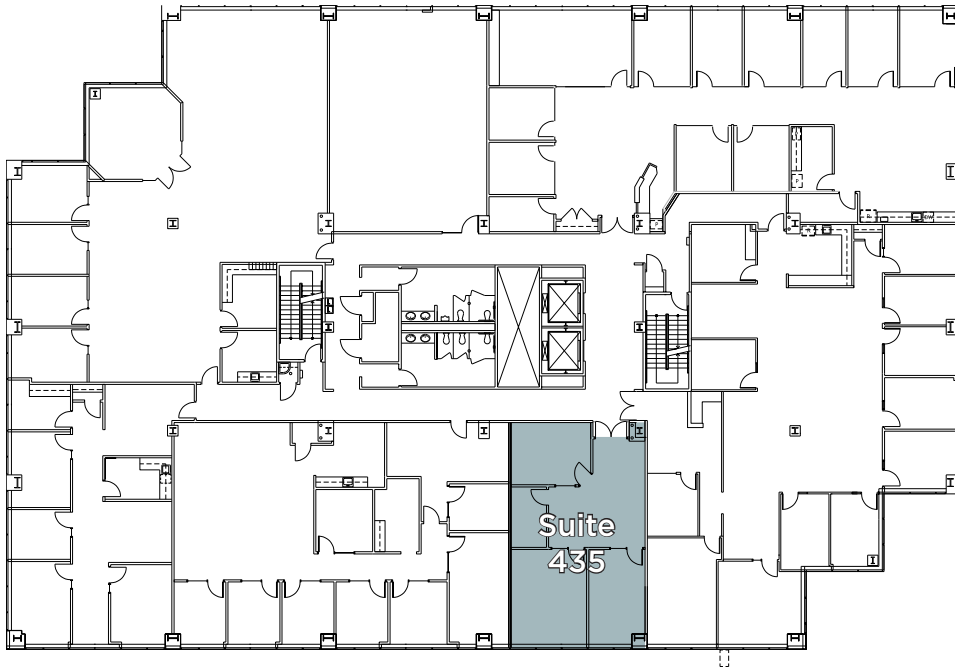
MIKE RICHMOND
Executive Managing Director
(801) 303 5434
mike.richmond@cushwake.com



170 South Main Street, Suite 1600
Salt Lake City, Utah 84101
+1 801 322 2000 cushmanwakefield.com

BUILDING TEN

2825 EAST COTTONWOOD PARKWAY
COTTONWOOD HEIGHTS, UT



Floor **4**

Suite 435
1,435 RSF



LEASING INFORMATION

DANA BAIRD, CCIM
Executive Managing Director
(801) 303 5526
dana.baird@cushwake.com

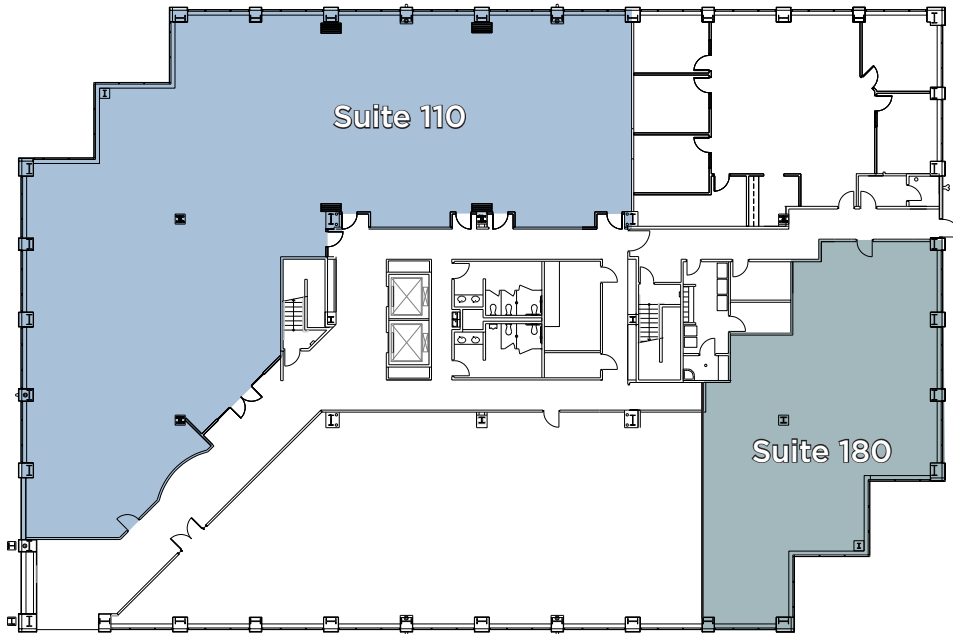
MIKE RICHMOND
Executive Managing Director
(801) 303 5434
mike.richmond@cushwake.com



170 South Main Street, Suite 1600
Salt Lake City, Utah 84101
+1 801 322 2000 cushmanwakefield.com

BUILDING ELEVEN

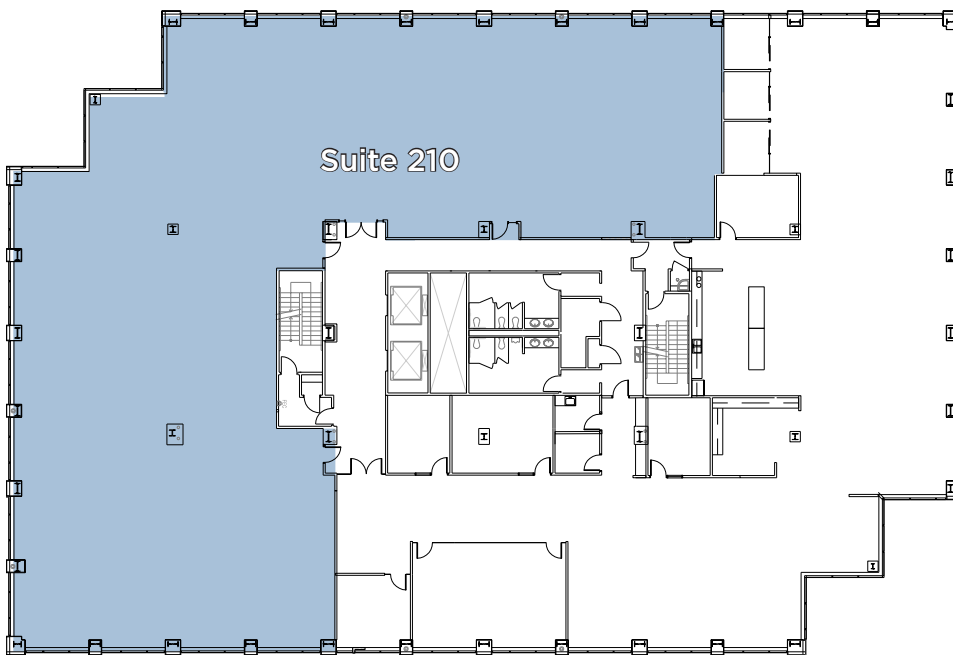
2855 EAST COTTONWOOD PARKWAY
COTTONWOOD HEIGHTS, UT



Floor 1

Suite 110
8,992 RSF

Suite 180
3,276 RSF



Floor 2

Suite 210
12,032 RSF

LEASING INFORMATION

DANA BAIRD, CCIM
Executive Managing Director
(801) 303 5526
dana.baird@cushwake.com

MIKE RICHMOND
Executive Managing Director
(801) 303 5434
mike.richmond@cushwake.com



170 South Main Street, Suite 1600
Salt Lake City, Utah 84101
+1 801 322 2000 cushmanwakefield.com

