



6,000 SF AVAILABLE

2054 - 2068 Weems Road
Suite D2060
Tucker, GA 30084

FOR LEASE



PROPERTY INFORMATION

Total Size: 6,000 SF
Office: 2,180 SF
Warehouse: 3,820 SF
Loading: One (1) Dock High Door
One (1) Drive-In Door
Clear Height: 20'
Available: Immediately



For more information, please contact:

CLARK OWEN

Office: (404) 595-1553
Cell: (706) 474-3727
cowen@apexindustrialre.com

MORGAN MCMENAMY

Office: (404) 806-6631
Cell: (404) 771-1199
mmcmenamy@apexindustrialre.com



Although the information contained therein was provided from sources believed to be reliable, Apex Industrial makes no representation, expressed or implied, as to its accuracy and said information is subject to errors, omissions or changes.



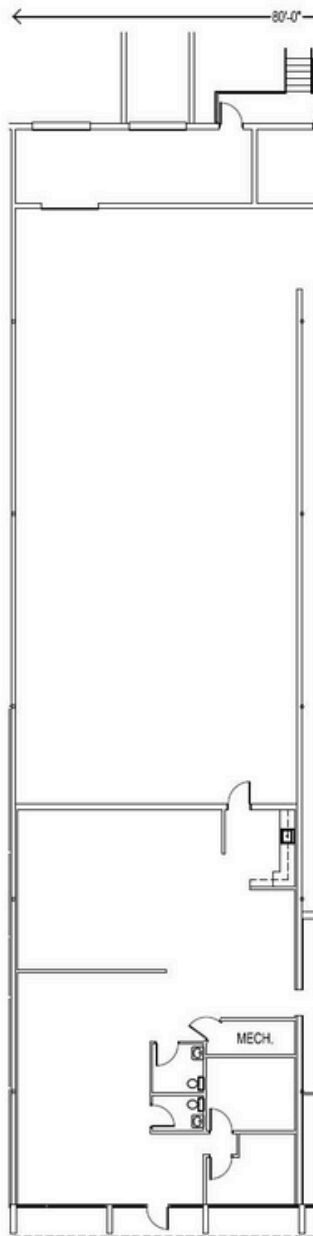
6,000 SF AVAILABLE

2054 - 2068 Weems Road

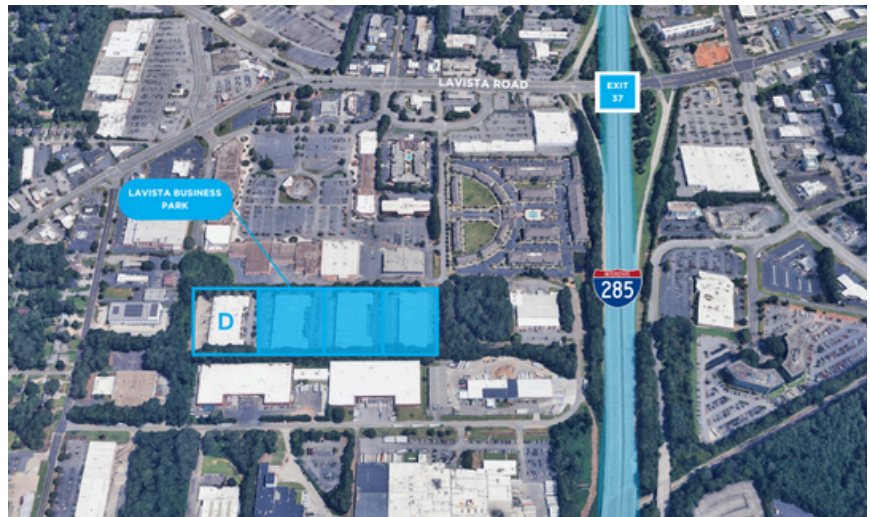
Suite D2060

Tucker, GA 30084

FLOOR PLAN



MAP



For more information, please contact:

CLARK OWEN

Office: (404) 595-1553
Cell: (706) 474-3727
cowen@apexindustrialre.com

MORGAN MCMENAMY

Office: (404) 806-6631
Cell: (404) 771-1199
mmcmenamy@apexindustrialre.com



Although the information contained therein was provided from sources believed to be reliable, Apex Industrial makes no representation, expressed or implied, as to its accuracy and said information is subject to errors, omissions or changes.