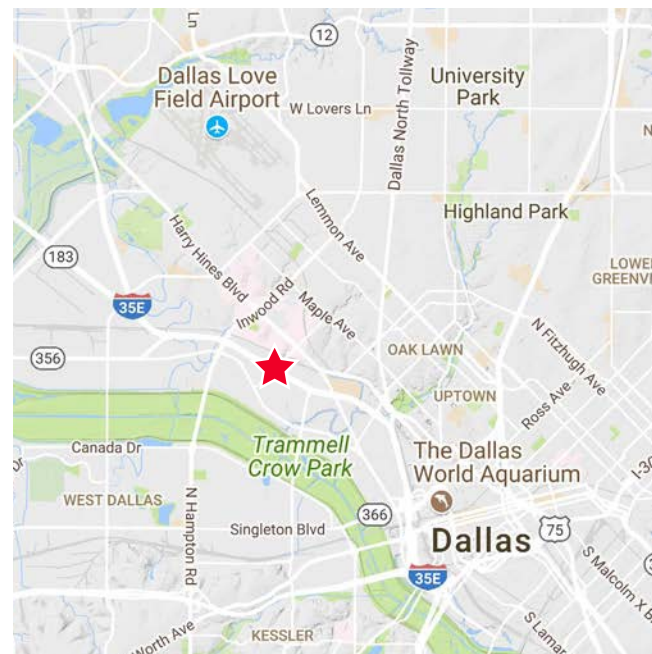




10,100 SF Available - Freestanding Building

Property Highlights

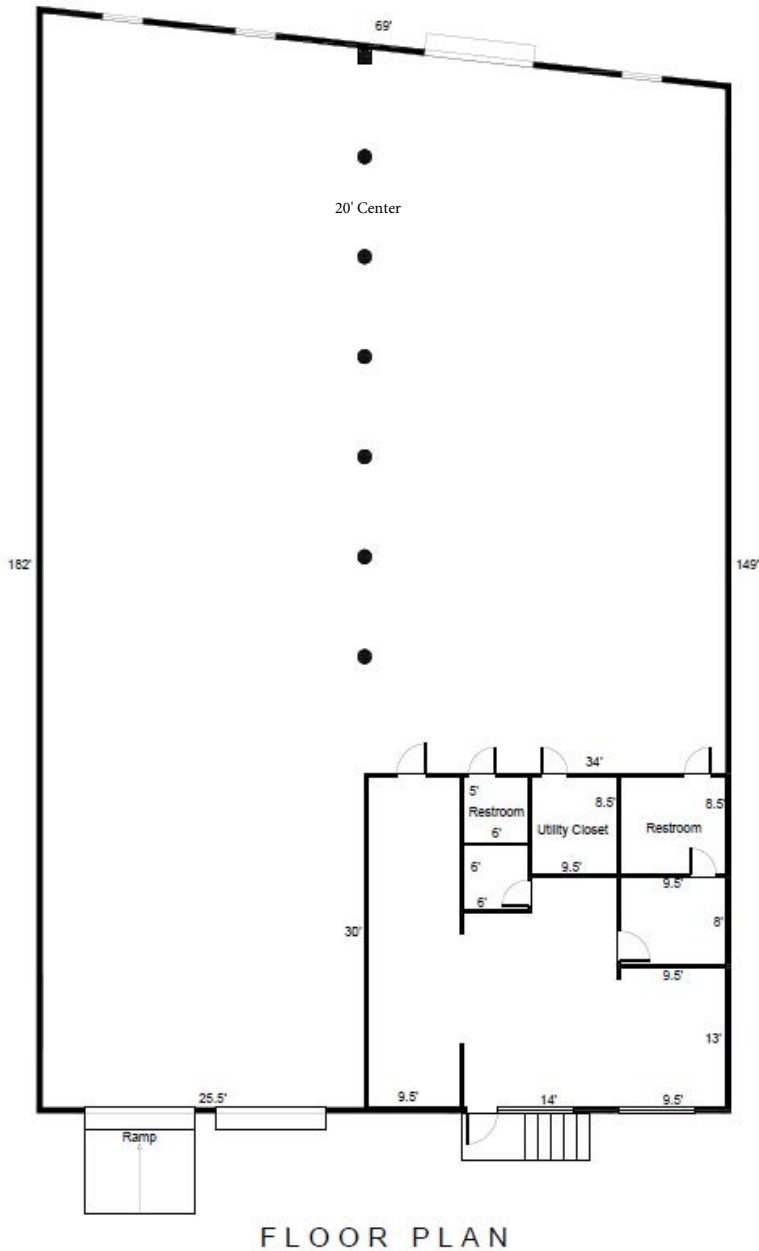
- Dallas Design District Area
- New LED Lighting, New Overhead Doors
- ± 950 sf Office (painted May 2026)
- 2 Dock Doors (1 Ramped)
- 400 Amp 3 Phase Power
- 14' Clear Height
- Excellent Irving Blvd Exposure
- Available Occupancy June 2026



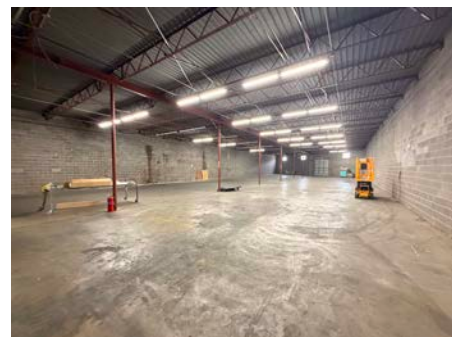
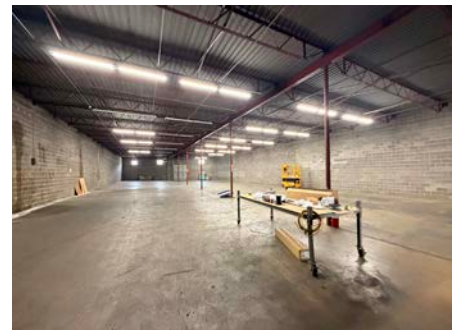
Jay R. Lucas, CCIM
Senior Director
+1 972 754-2246
jay.lucas@cushwake.com

2021 McKinney Ave, Suite 900
Dallas, Texas 75201
Off +1 972 663 9705
fax +1 972 663 9999
cushmanwakefield.com

Site Plan



Interior Photographs



Jay R. Lucas, CCIM
Senior Director
+1 972 754-2246
jay.lucas@cushwake.com

2021 McKinney Ave, Suite 900
Dallas, Texas 75201
Off +1 972 663 9705
fax +1 972 663 9999
cushmanwakefield.com